

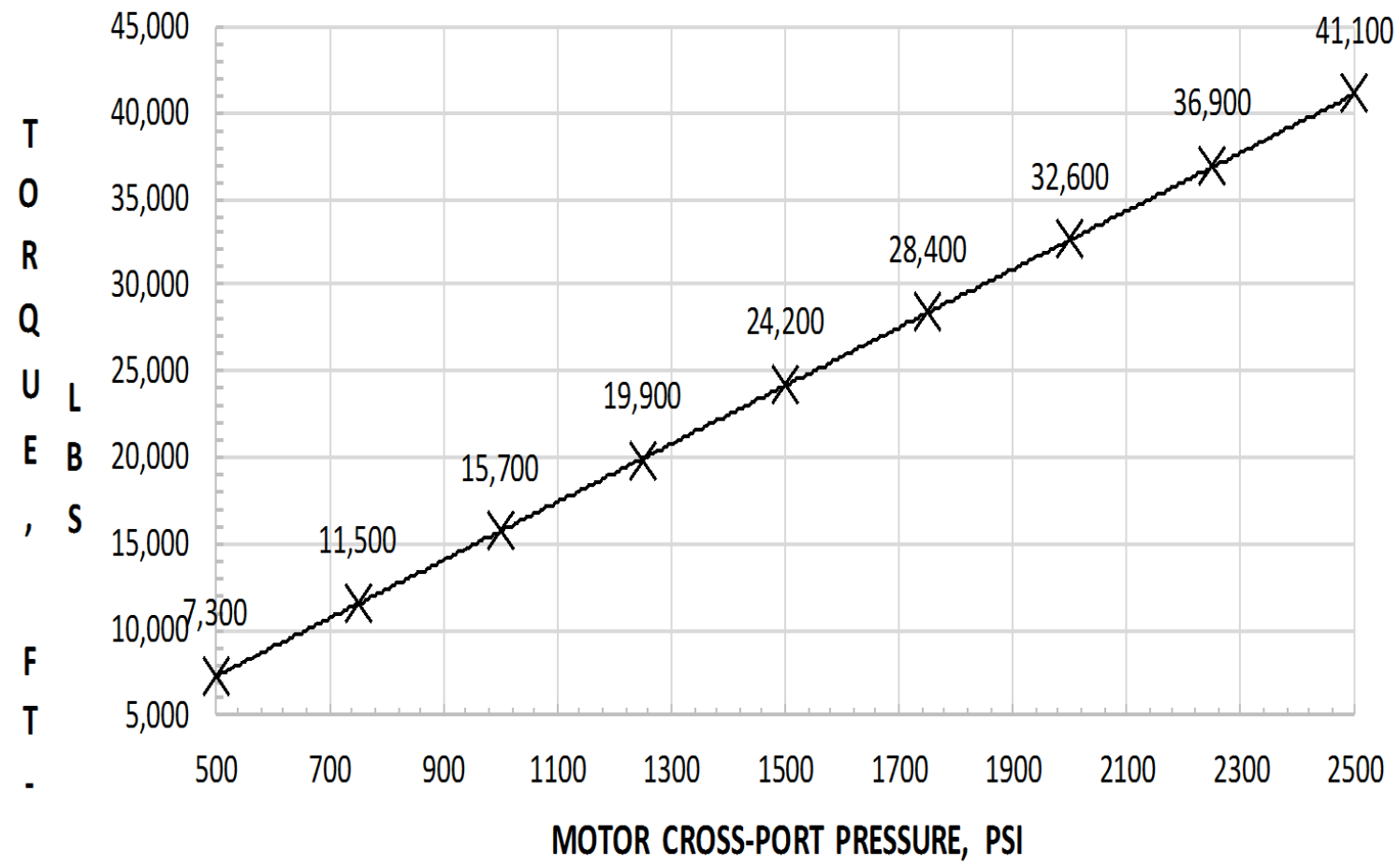
TONG SEPCIFICATIONS		
MAX TORQUE (FT LBS/NM)	40,000	54,200
ARM LENGTH (INCH/CM)	34.0	86.4
MASS (LBS/KG) W/O JAWS	1,709	775
TORQUE (FT LBS/NM, ESTIMATES)		
AT PRESSURE (psid/bar)	2,450	169
Hi/Full	4,600	6,237
Lo/Full	40,000	54,200
SPEED (RPM, ESTIMATES)		
AT FLOW RATE (GPM/LPM):	60	227
Hi/Full	58.6	
Lo/Full	8.2	
JAW SIZE RANGE (INCH), 1040-JDK-XXXXX		
FROM/TO (SLIDING-HEAD)	4.5	10

RELEASED FOR PRODUCTION

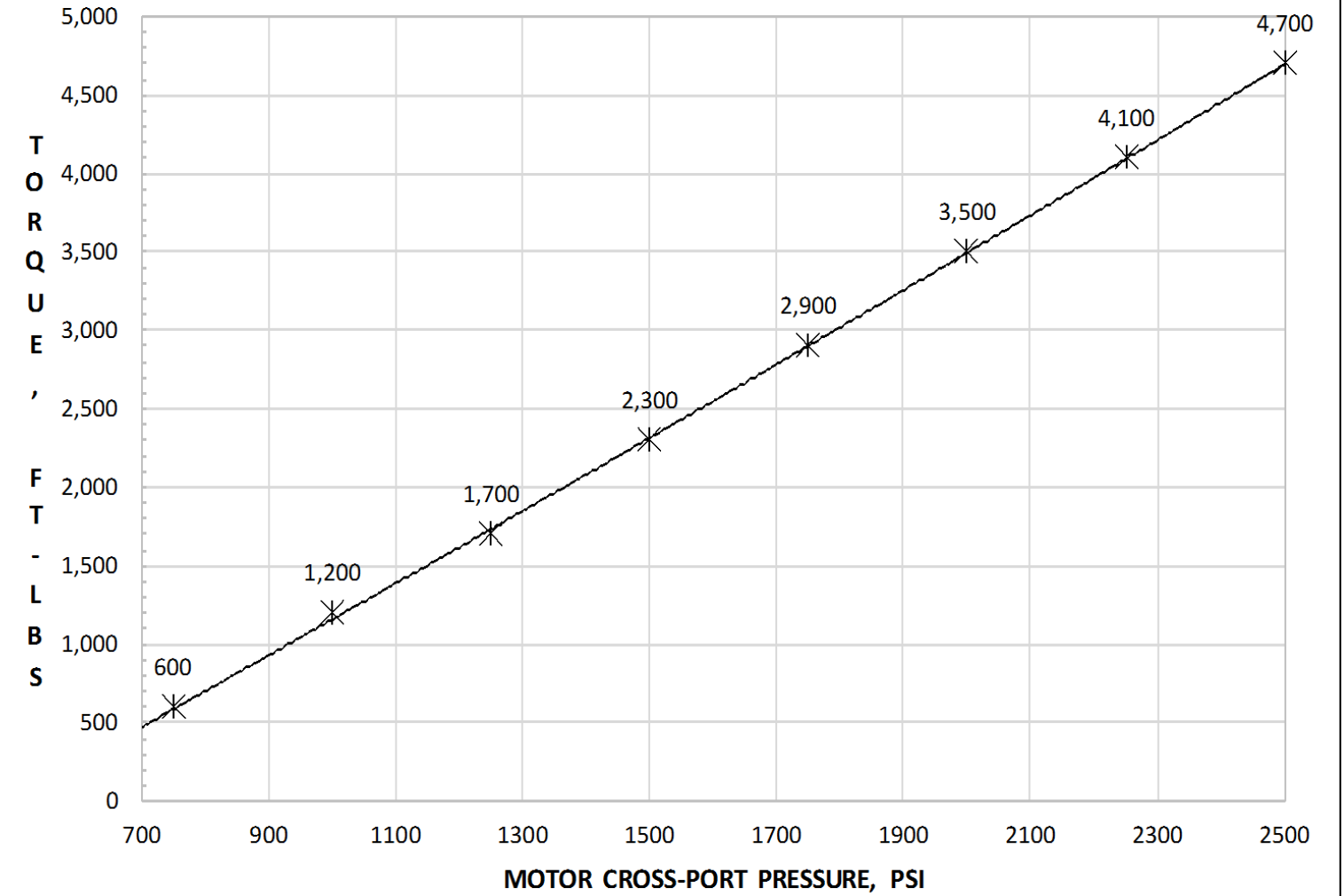
REVISIONS				
REVISION	ECO NUMBER	ECO DESCRIPTION	ECO COMPLETED BY	ECO COMPLETED DATE
A	N/A	INITIAL RELEASE	N/A	N/A

<small>UNLESS OTHERWISE SPECIFIED:</small> 1. DIMENSIONS ARE IN INCHES 2. TOLERANCES: ANGULAR ± 1° FRACTIONAL ± 1/16 TWO PLACE DECIMAL ± 0.02 THREE PLACE DECIMAL ± 0.005 3. IDENTIFY P/N & MAIL P.O. USING 1/8 TO 1/4 ETCHED LETTERS; DENOTED BY "X" 4. REMOVE BURRS & SHARP EDGES WITH 1/64x45° MAX 5. MACHINED FILET RADII SHALL BE 1/32 6. FINAL SURFACE ROUGHNESS AVG. (Ra) SHALL BE 3.250 MICROINCHES 7. ○ DENOTES CRITICAL DIMENSION; 100% INSPECTION REQUIRED 8. A TRIANGLE DENOTES A REVISION 9. INTERPRET DRAWING PER ASME Y14.5-2009	PROPRIETARY STATEMENT <small>THIS DOCUMENT IS THE PROPERTY OF MCCOY CORPORATION AND IS CONSIDERED CONFIDENTIAL. THIS INFORMATION MAY NOT BE USED, DISCLOSED, COPIED, OR REPRODUCED IN ANY FORM, WITHOUT THE EXPRESS WRITTEN CONSENT OF MCCOY CORPORATION.</small>		DESCRIPTION 	
	DRAWN	M.BUDDEN	12/27/2017	ASSEMBLY, TONG, 10000-40K, NO BU
	CHECKED	J.KELLY	01/04/2018	SIZE PART NO.
	APPROVED	J.KELLY	01/04/2018	B 80-1040-11
THIRD ANGLE PROJECTION	WEIGHT	1708.6 LBS.	MATERIAL	N/A
			REV A	SHEET 1 OF 1

10-40K power tong output torque performance @ low speed

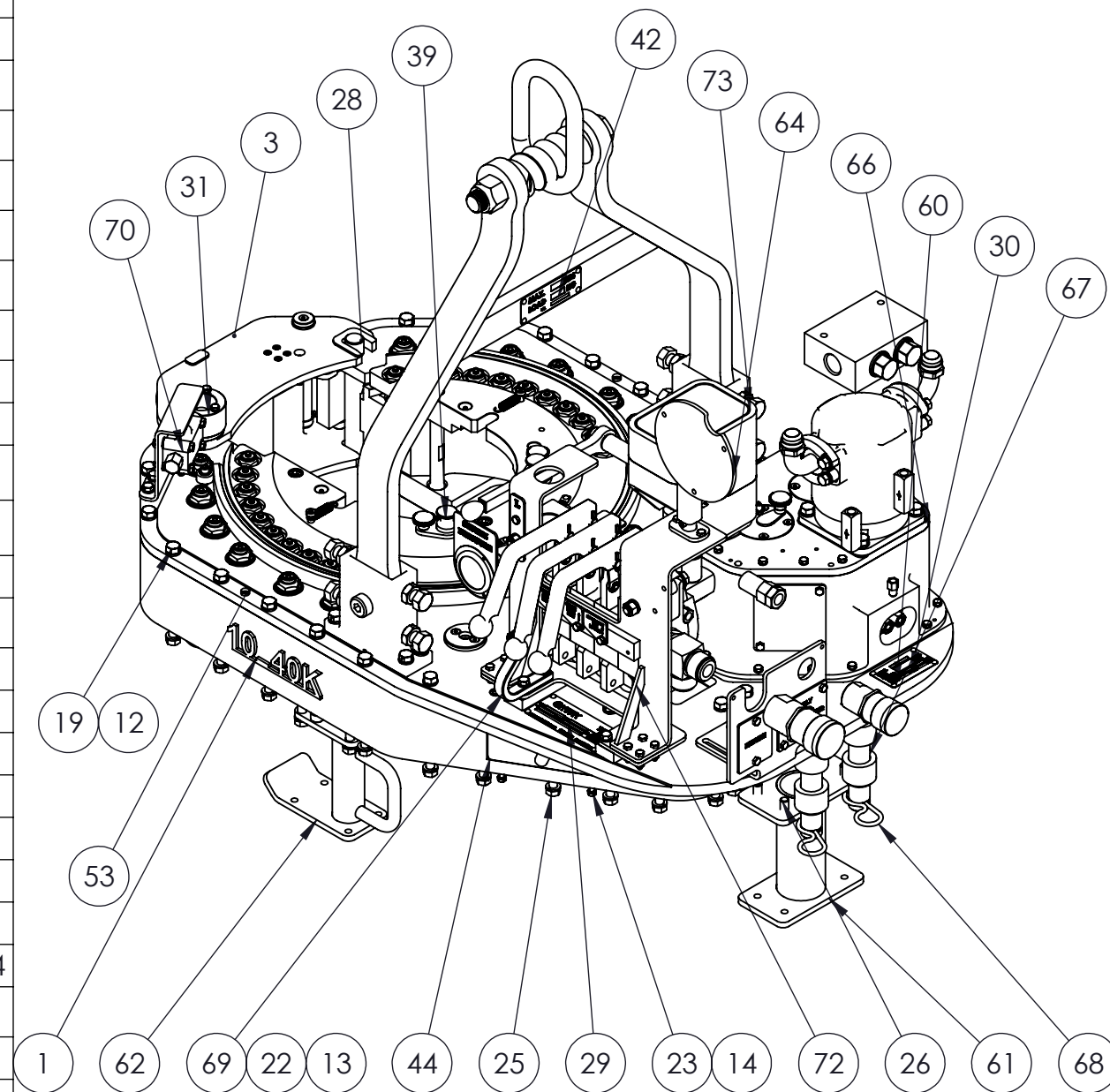


10-40K power tong output torque performance @ high speed



DESCRIPTION		
SIZE	PART NO.	REV
B	80-1040-11	
MATERIAL		SHEET 2 OF 9

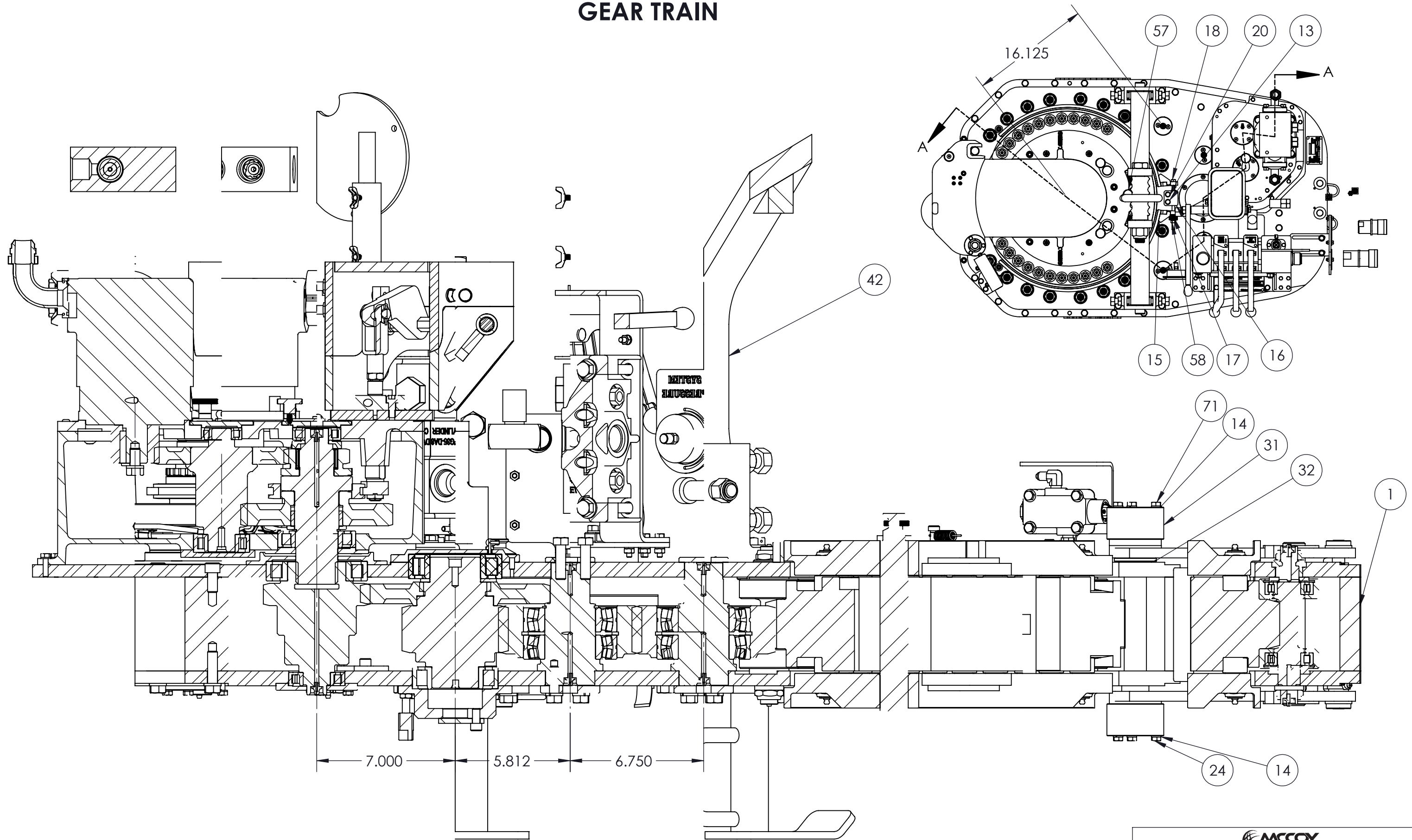
ITEM	QTY	P/N	DESCRIPTION	ITEM	QTY	P/N	DESCRIPTION
1	1	101-9164	WELDMENT, TONG BODY, 10-40K	37	1	02-9272	FITTING, GREASE, 1/4-28, ELBOW
2	16	101-9159	ASSEMBLY, DUMBBELL ROLLER, 30MM	38	1	02-0070	GREASE FITTING, STRAIGHT 1/4-28
3	1	101-8517	ASSEMBLY, TONG DOOR, 10-40K	39	2	101-8690	WELDMENT, JAW PIVOT PIN, T10-40K
4	1	101-9166	ASSEMBLY, BOTTOM CAGE PLATE, 10-40K	40	1	101-8686	WELDMENT, BACKING PIN, T10-40K
5	1	101-9111	RING GEAR, TONG, 10-40K	41	2	02-E0199	CLAMP, PIPE, 2"
6	1	101-9165	ASSEMBLY, TOP CAGE PLATE, 10-40K	42	1	101-8738	ASSEMBLY, RIGID SLING, 28.75HX23.38W
7	1	101-8683	BEARING CAP, NJ2213, T10-40K	43	1	101-8679	WELDMENT, HOSE PASSGE PIPE, 3" SCH40
8	1	101-8682	BEARING CAP, NJ215, T10-40K	44	2	101-8779	COVER, TONG INSPECTION
9	1	101-8693	ASSEMBLY, BEARING CAP, NJ2212, T1040	45	2	101-8714	BAR, 0.75X1.50X4.50, 3/8NC-2B
10	32	09-5721	NUT, NYLOCK, 7/8-9 UNC, SLIM	46	16	09-2166	SCREW, SOCKET CAP, SOCKET, 1/2-13, 1, GR 8, ZINC
11	16	09-5122	WASHER, SPRING LOCK, REGULAR, 7/8, 1 15/32, 0.125-0.25, STEEL, GR 8, ZINC	47	6	09-1738	SCREW, SOCKET CAP, SOCKET, 3/8-16, 1, GR 8, ZINC
12	60	09-5110	WASHER, SPRING LOCK, REGULAR, 1/2, 43/50, 0.125-0.25, STEEL, GR 8, ZINC	48	8	09-2172	SCREW, SOCKET CAP, SOCKET, 1/2-13, 1 3/4, GR 8, ZINC
13	8	09-5106	WASHER, SPRING LOCK, REGULAR, 3/8, 17/25, 0.035-0.125, STEEL, GR 8, ZINC	49	4	09-2003	SCREW, SOCKET CAP, SOCKET, 1/4-20, 1/2, GR 8, ZINC
14	32	09-5102	WASHER, SPRING LOCK, REGULAR, 1/4, 31/64, 0.035-0.125, STEEL, GR 8, ZINC	50	2	09-2022	SCREW, SOCKET CAP, SOCKET, 5/16-18, 1/2, GR 8, ZINC
15	2	101-9173	ASSEMBLY, BRAKE BAND 10-40K	51	12	09-4005	SCREW, SOCKET HEAD CAP, 1/4-20, 3/4, STEEL, GR 8, ZINC
16	1	101-8088	PLATE, ADJUSTER, BRAKE BAND	52	2	09-9072	PIN, DOWEL, 1/4, 1, STEEL, ZINC
17	1	101-9553	ASSEMBLY, SPRING DISCS, 10	53	2	09-0220	PIN, DOWEL, 1/2, 1 1/4, STEEL, ZINC
18	1	09-1071	BOLT, HEX, 3/8-16, 6 1/2, GR 8, ZINC, FULLY THREADED	54	2	09-0340	Washer, Type A, Flat, Narrow, Preferred, 5/16, 13/16, 0.035-0.125, STEEL, ZINC
19	46	09-0393	BOLT, HEX, 1/2-13, 1 3/4, GR 8, ZINC, PARTIALLY THREADED	55	2	09-5124	3/8"
20	2	09-0387	BOLT, HEX, 3/8-16, 1 3/4, GR 8, ZINC, PARTIALLY THREADED	56	1	02-E0439	BUSHING, 0.625ODX0.344IDX0.250L
21	22	09-1007	BOLT, HEX, 1/4-20, 1, GR 8, ZINC, FULLY THREADED	57	3	02-E0441	THUMB SCREW, KNURLED HEAD, 5/16-18X1/2-2A
22	6	09-1046	BOLT, HEX, 3/8-16, 1, GR 8, ZINC, FULLY THREADED	58	1	09-5806	NUT, HEX, 3/8-16, STEEL, GR 8, ZINC
23	4	09-1015	BOLT, HEX, 1/4-20, 2, GR 8, ZINC, FULLY THREADED	59	2	09-5802	NUT, HEX, 1/4-20, STEEL, GR 8, ZINC
24	3	09-1016	BOLT, HEX, 1/4-20, 2 1/4, GR 8, ZINC, FULLY THREADED	60	8	02-0557	RIVET, .546-.516, 5100-100
25	2	09-0443	BOLT, HEX, 1/2-13, 1 1/2, GR 8, ZINC, PARTIALLY THREADED	61	1	101-8782	WELDMENT, TONG REAR LEG, 10-40K
26	12	09-1168	BOLT, HEX, 1/2-13, 1 1/4, GR 8, ZINC, FULLY THREADED	62	1	101-8741	WELDMENT, TONG LEG LHS, 10-40K
27	4	101-8684	SPACER, 0.750ODX6.125L, 3/8UNC-2B	63	1	101-8751	WELDMENT, TONG LEG RHS, 10-40K
28	1	101-8696	ROD, 1.125ODX8.25LG, IHCP	64	1	101-8724	ASSEMBLY, TORQ. GAGE MOUNT
29	1	02-0023	PLATE, SERIAL NUMBER	65	1	02-E0579	SNAP RING, 0.625 EXT. ASME B18.27.2 NA4
30	1	101-8810	PLATE, NAME, SPECIFICATON	66	1	81-GB4500	ASSEMBLY, GEARBOX 4.5K, 2-SPEED BASE
31	2	101-8547	CAM, DOOR SWITCH, T10-40K	67	2	101-9177	PIN, SNUB
32	1	101-8685	WASHER, 2.13X1.156X0.281, BRONZE	68	2	1864	PIN, COTTER, 1 1/4, MCMASTERCARR PN:98335A114
33	1	101-9176	BEARING CAP, NJ207, T1040	69	1	1005041	HOOK, TIE-OFF
34	1	101-8579	ASSEMBLY, TONG INPUT PINION, 10-40K	70	1	101-8550-01	ASSEMBLY, DOOR SWITCH, T10-40K
35	1	101-8581	ASSEMBLY, TONG RT GEAR/R2 PINION, 10-40K	71	3	09-1017	BOLT, HEX, 1/4-20, 2 1/2, GR 8, ZINC, FULLY THREADED
36	4	101-8585	ASSEMBLY, TONG IDLER GEAR, 10-40K	72	1	HP-1040-3	HYDRAULIC PACKAGE, 1040K
				73	1	1005147	ASSEMBLY, MANUAL SHIFT, 10-40K



NOTE: BOTTOM PLATE HIDDEN ON VIEW

DESCRIPTION		MCCOY GLOBAL	
ASSEMBLY, TONG, 10000-40K, NO BU			
SIZE B	PART NO.	80-1040-11	REV A
MATERIAL	N/A	SHEET 3 OF 9	

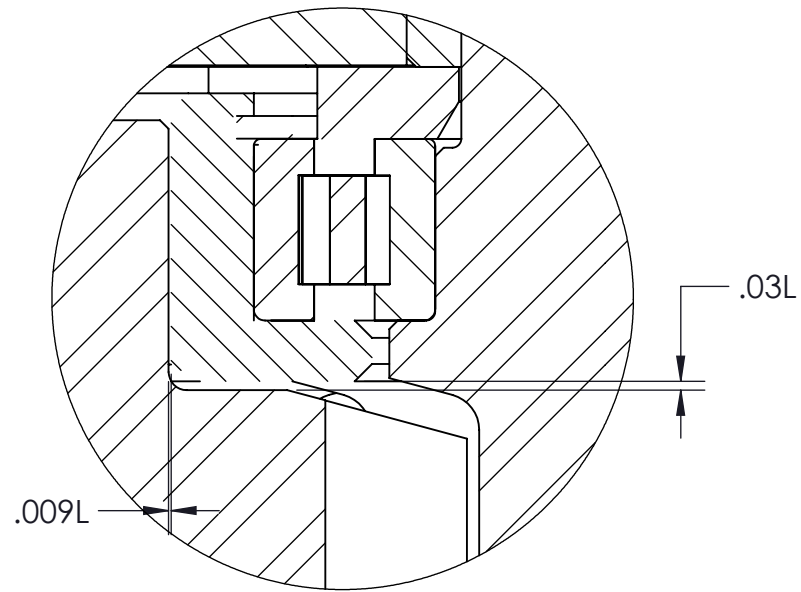
GEAR TRAIN



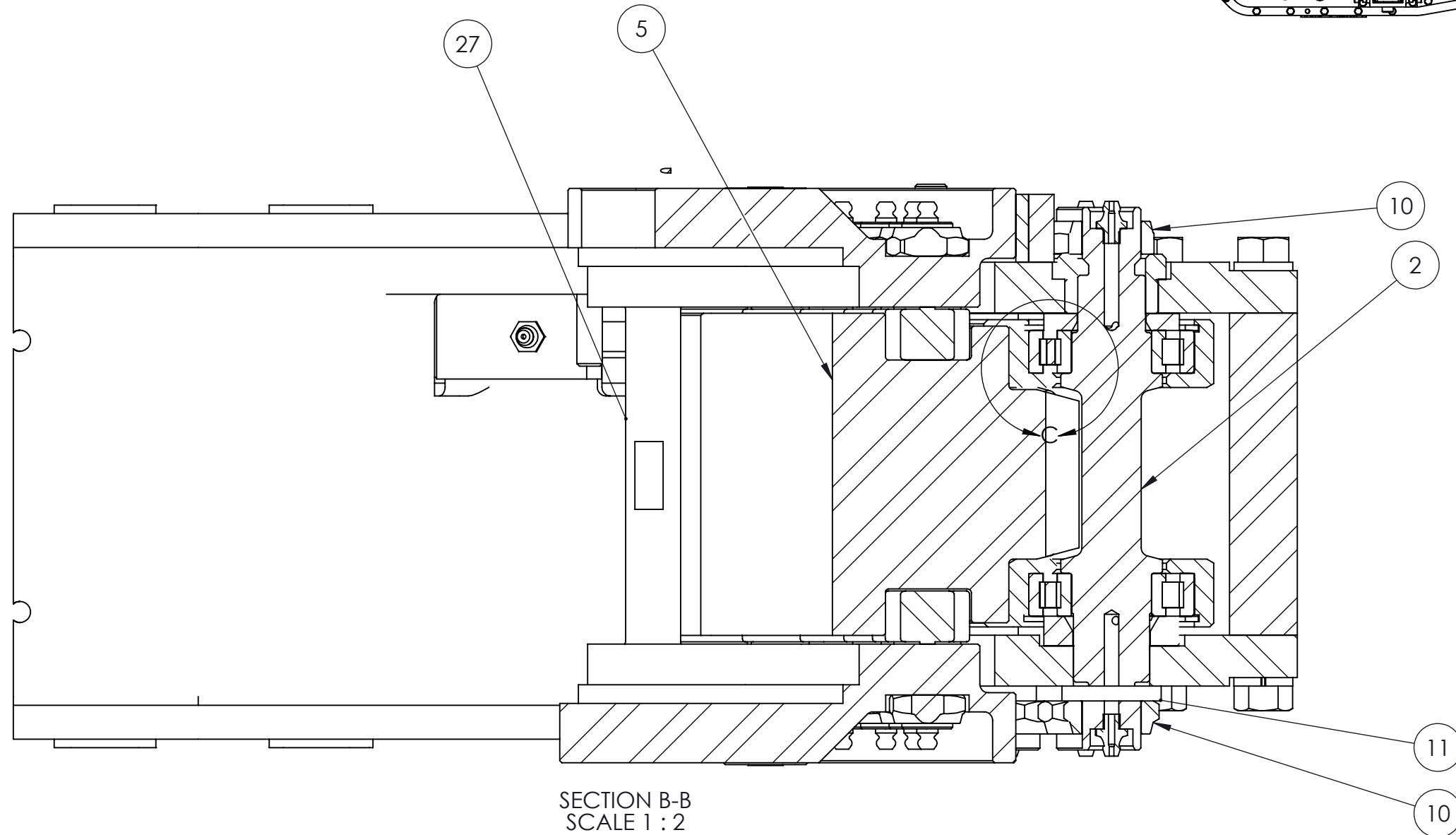
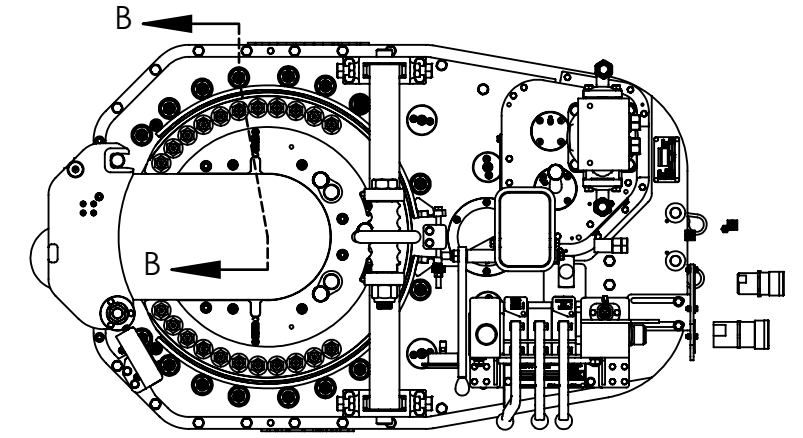
SECTION A-A
SCALE 1 : 4.5

DESCRIPTION			
ASSEMBLY, TONG, 10000-40K, NO BU			
SIZE	PART NO.	80-1040-11	REV A
MATERIAL	N/A	SHEET 4 OF 9	

DUMBBELL ROLLERS



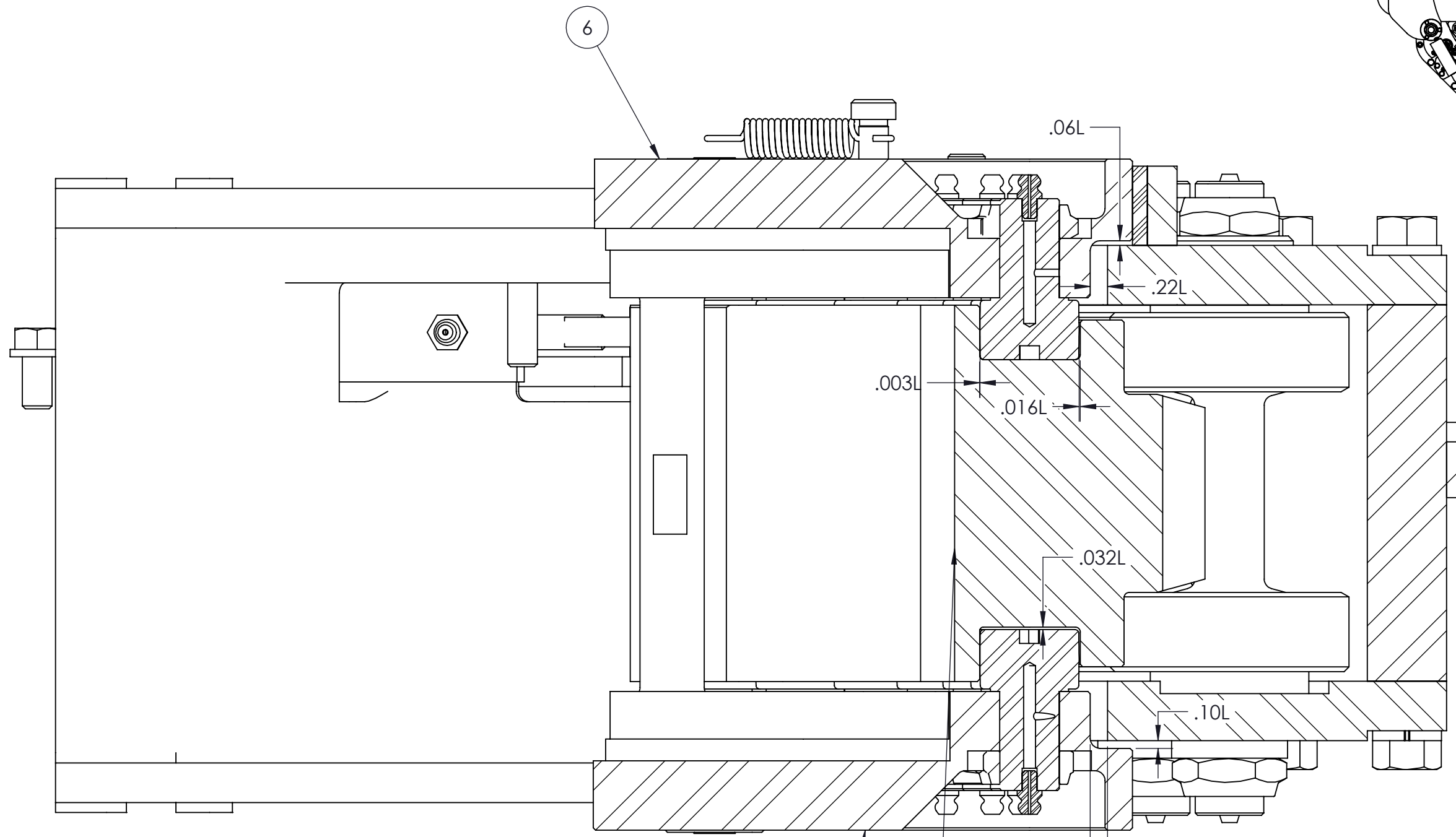
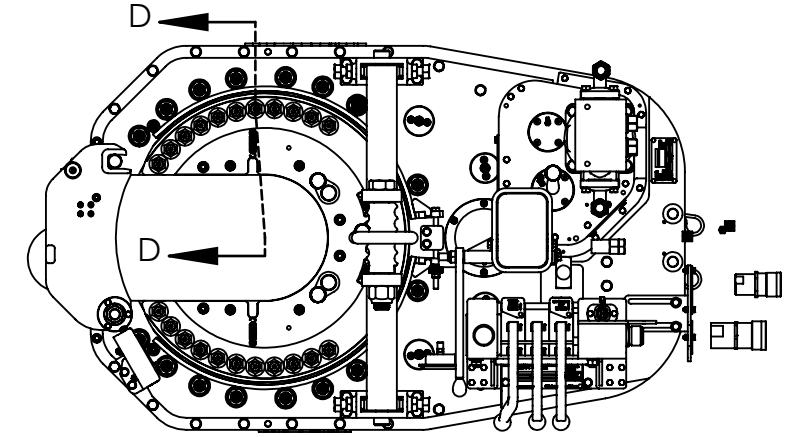
DETAIL C
SCALE 1.5 : 1



SECTION B-B
SCALE 1 : 2

DESCRIPTION			
ASSEMBLY, TONG, 10000-40K, NO BU			
SIZE	PART NO.	80-1040-11	REV A
MATERIAL	N/A	SHEET 5 OF 9	

CAGE PLATES



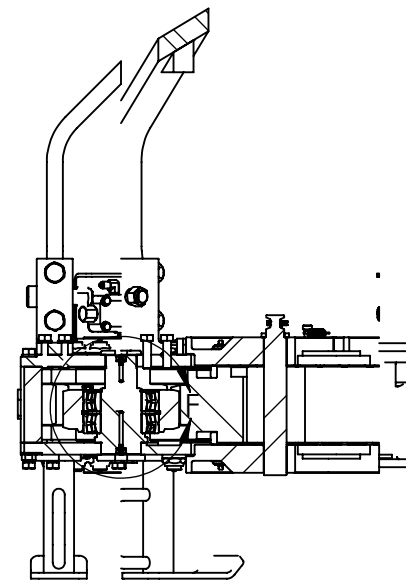
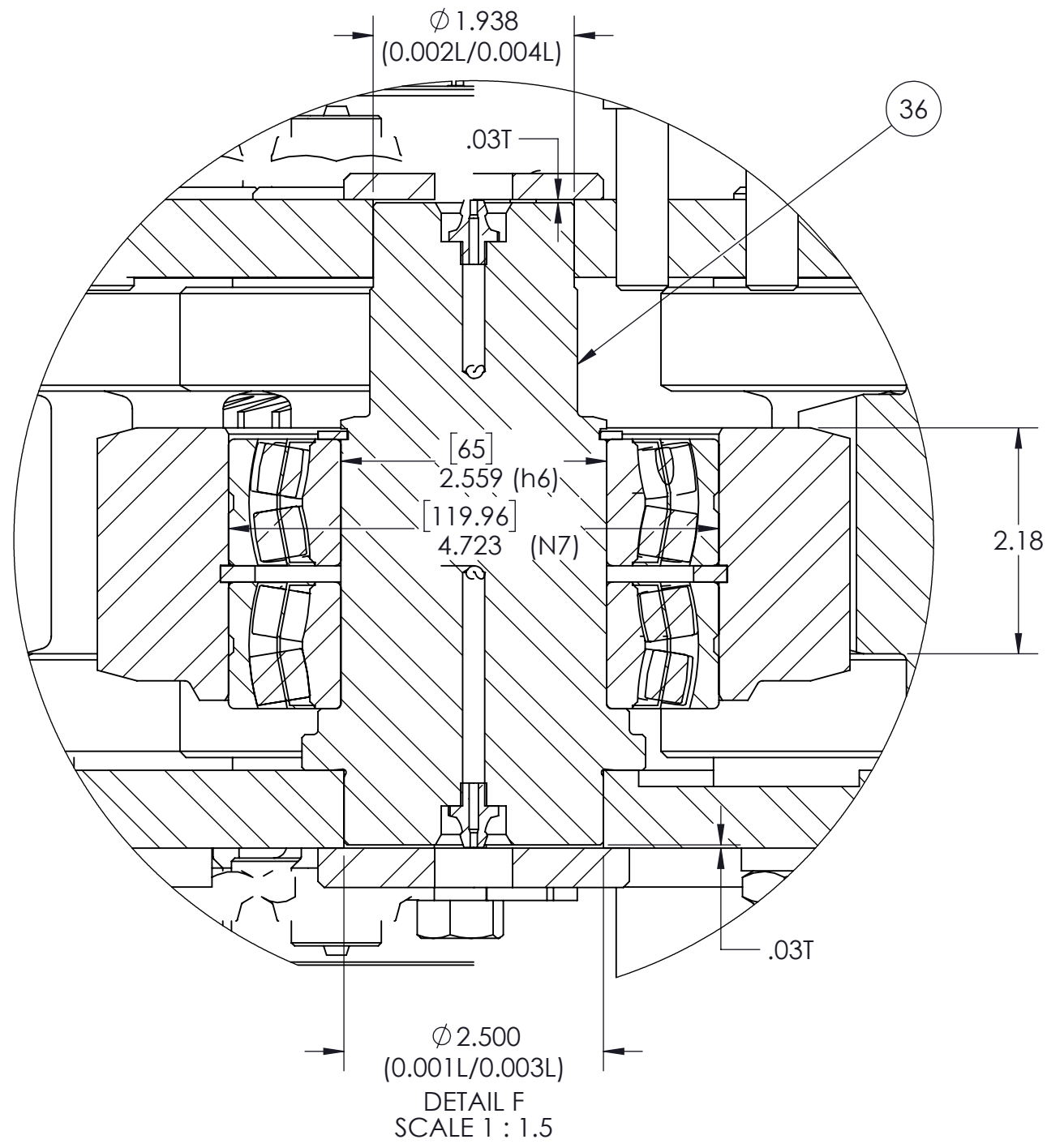
SECTION D-D
SCALE 1 : 1.5

4

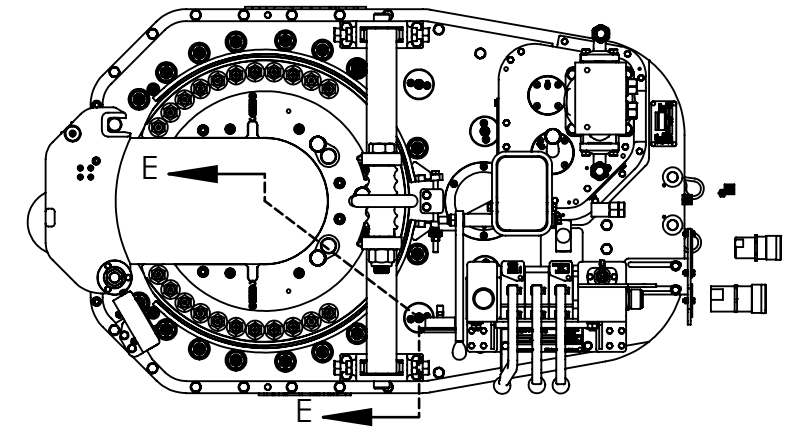
5

DESCRIPTION		
	ASSEMBLY, TONG, 10000-40K, NO BU	
SIZE	PART NO.	REV
B	80-1040-11	A
MATERIAL	N/A	SHEET 6 OF 9

IDLER GEAR ASSEMBLIES

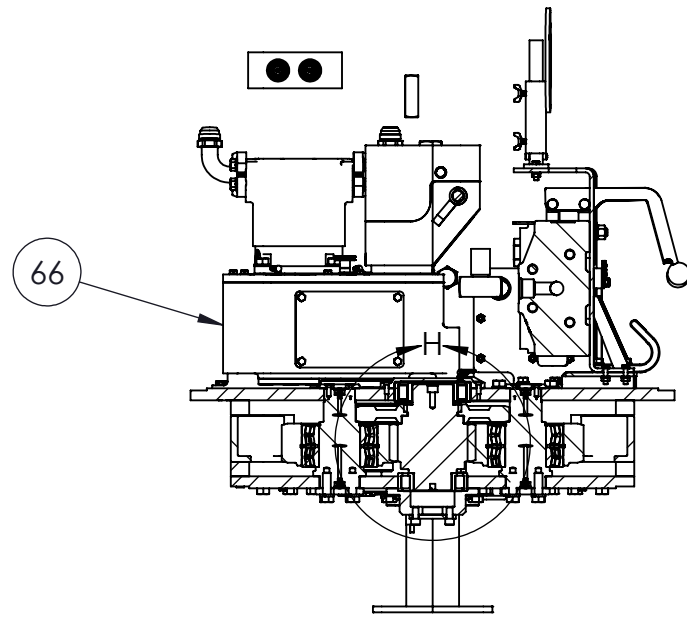
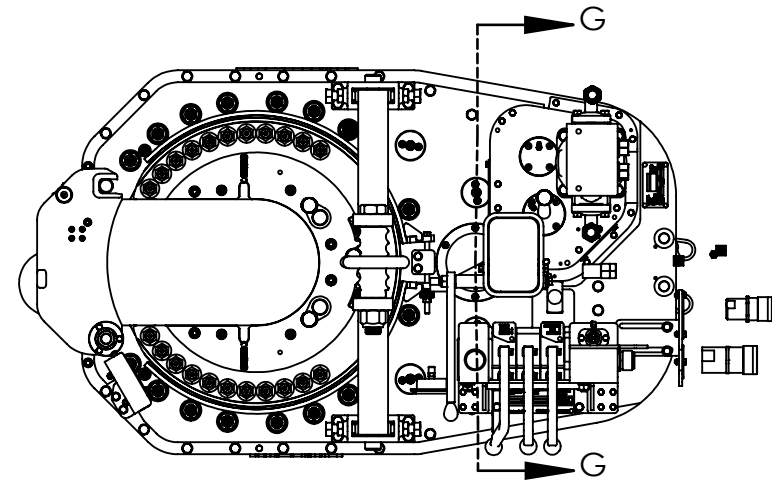


SECTION E-E
SCALE 1 : 12

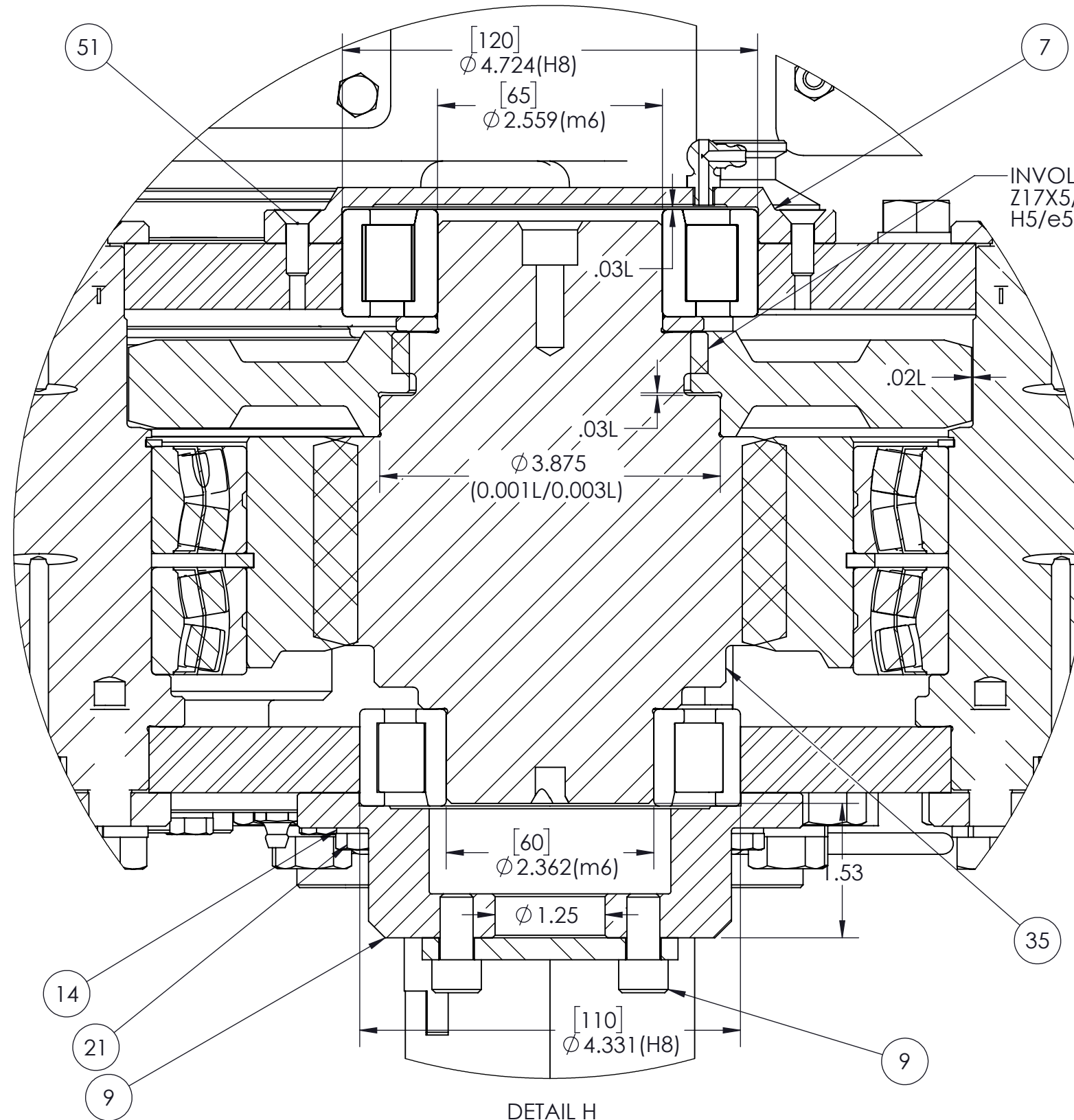


DESCRIPTION		
	ASSEMBLY, TONG, 10000-40K, NO BU	
SIZE	PART NO.	REV
B	80-1040-11	A
MATERIAL	N/A	SHEET 7 OF 9


CENTER PINION ASSEMBLY



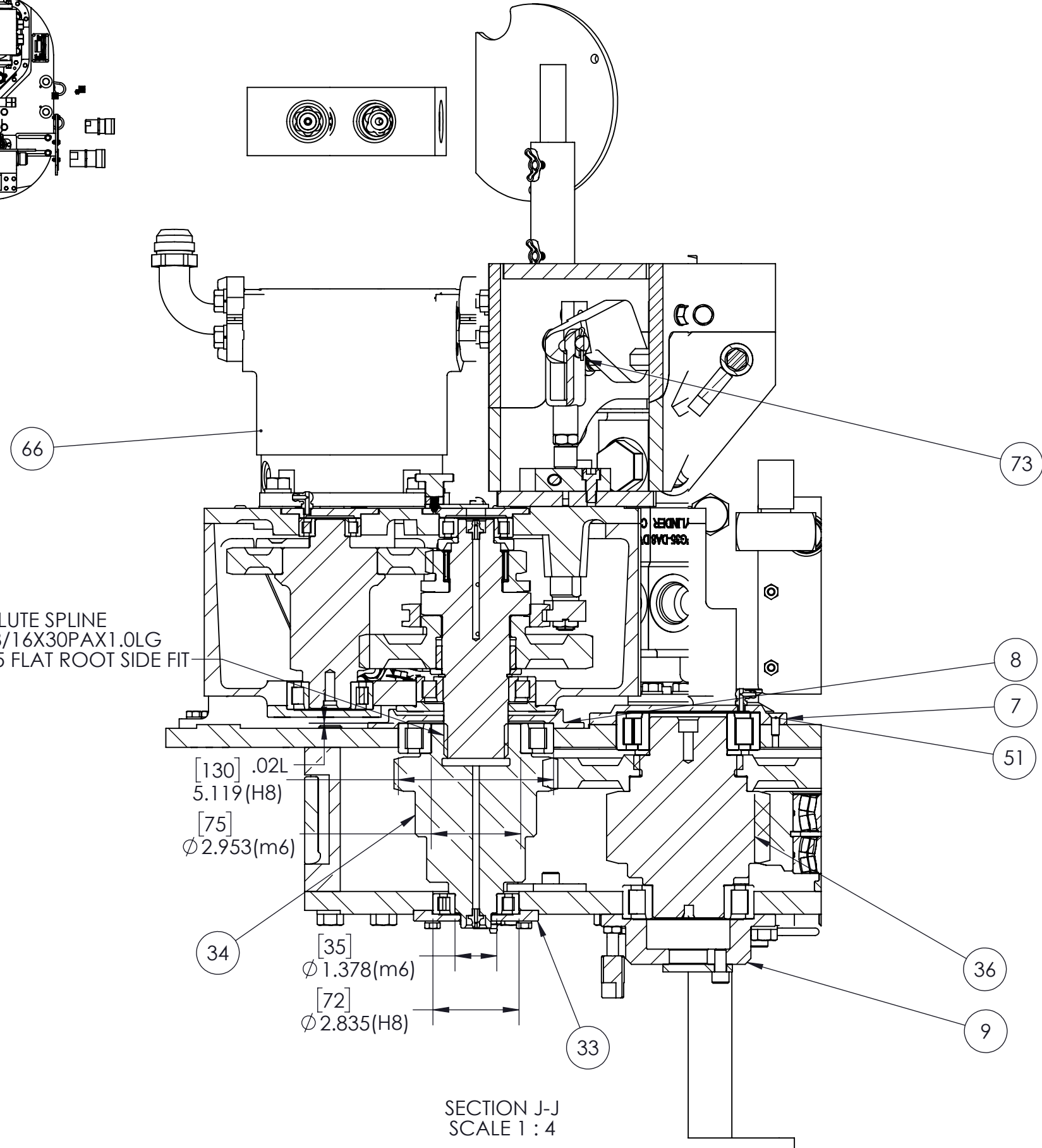
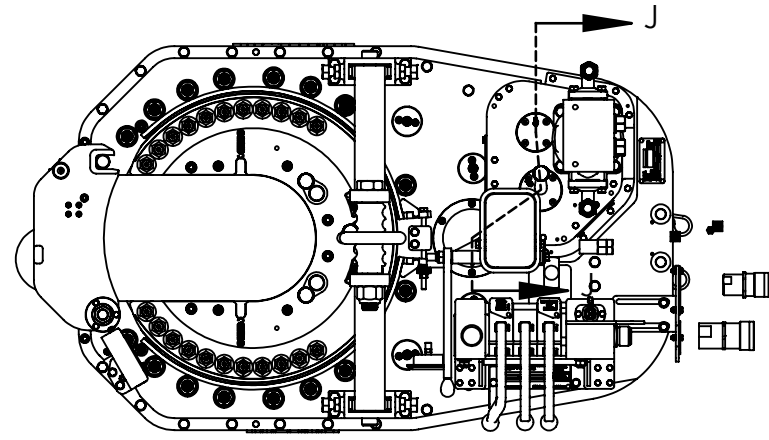
SECTION G-G
SCALE 1 : 12



DETAIL H
SCALE 1 : 1.5

DESCRIPTION	 ASSEMBLY, TONG, 10000-40K, NO BU	
SIZE PART NO.	80-1040-11	REV A
MATERIAL	N/A	SHEET 8 OF 9

TONG INPUT



INVOLUTE SPLINE
Z16X8/16X30PAX1.0LG
H5/d5 FLAT ROOT SIDE FIT

SECTION J-J
SCALE 1 : 4

DESCRIPTION		
	ASSEMBLY, TONG, 10000-40K, NO BU	
SIZE B	PART NO. 80-1040-11	REV A
MATERIAL	N/A	SHEET 9 OF 9