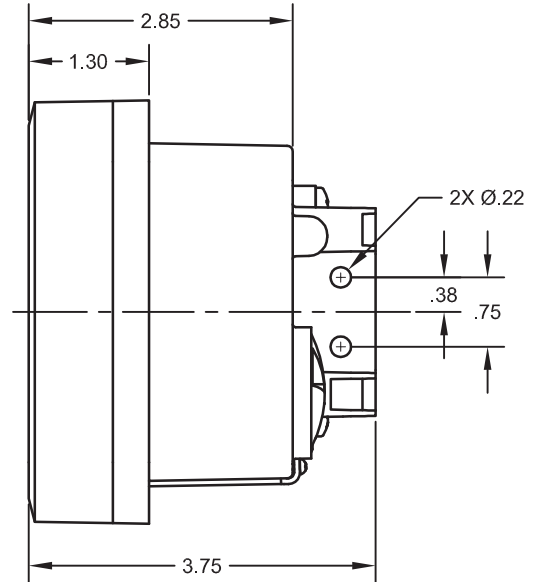
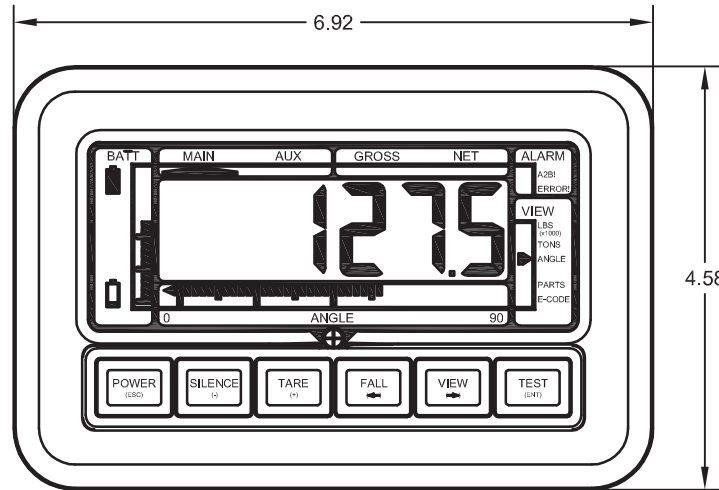


SPECIFICATIONS:

1. GENERAL:
  - 1.1 NUMERIC DISPLAY: 5-1/2 DIGIT, 7 SEGMENT, LCD
  - 1.2 20 SEGMENT VERTICAL BAR GRAPH FOR BATTERY MONITORING
  - 1.3 40 SEGMENT HORIZONTAL BAR GRAPH FOR OPTIONAL BOOM ANGLE MONITORING
  - 1.4 16 SPECIAL ICONS FOR STATUS INDICATION
  - 1.5 GROSS/NET/TARE FEATURE
  - 1.6 ONE OR TWO FALL OPERATION
  - 1.7 BUZZER: 2900Hz
  - 1.8 SIX BUTTON KEYPAD
2. CONNECTIONS:
  - 2.1 POWER: 7-30 VDC
  - 2.2 WIRELESS DATA, 2.4GHz SPREAD SPECTRUM
  - 2.3 CANBus DATA, FAULT PROTECTED
  - 2.4 TWO ALARM OUTPUTS (A2B ALARM), SOLID STATE, FAULT PROTECTED
3. CONSTRUCTION:
  - 3.1 HOUSING MATERIAL: CELCON (ACETAL), PER UL 746C(f1)
  - 3.2 HARDWARE: STAINLESS STEEL AND BRASS
  - 3.3 LENS: 1/4" THICK POLYCARBONATE (LEXAN)
4. ENVIRONMENTAL:
  - 4.1 OPERATING TEMPERATURE: -30°C TO +75°C
  - 4.2 STORAGE TEMPERATURE: -40°C TO +85°C
  - 4.3 SEALING: IP67

REVISIONS			
REV	DESCRIPTION	APPROVED	DATE
A	INITIAL RELEASE	M UHLEIN	01/21/09
B	REVISED PER ECO 1986	M UHLEIN	03/10/09
C	REVISED PER ECO 2005	M UHLEIN	03/27/09



SPECIFICATION CONTROL DRAWING

EXPORT COMPLIANCE: TRANSFER OF 3PS DATA (DOCUMENTS, SOFTWARE, DRAWINGS, SPECS, ETC) BY ANY MEANS TO A FOREIGN PERSON OR ENTITY, WHETHER IN THE UNITED STATES OR ABROAD, MAY REQUIRE U.S. GOVERNMENT AUTHORIZATION.

© 2009 BY 3PS, INC  
 THIS DOCUMENT MAY NOT BE COPIED OR REPRODUCED IN ANY WAY WITHOUT THE WRITTEN CONSENT OF 3PS, INC. 3PS, INC. OWNS ALL RIGHTS TO THIS WORK AND INTENDS TO ENFORCE ITS RIGHTS UNDER THE COPYRIGHT LAWS AS A PUBLISHED WORK.

THIRD ANGLE PROJECTION



TOLERANCES (UNLESS OTHERWISE SPECIFIED)  
 HOLE: +.006  
 -.001  
 DECIMAL: .XXX: ±.005  
 DECIMAL: .XX: ±.01  
 DECIMAL: .X: ±.1  
 ANGLES: ±1°  
 SURFACE: 125  
 ROUGHNESS:

REMOVE ALL BURRS,  
 BREAK SHARP EDGES  
 R.015 MAX. INSIDE  
 CORNER RADII .015 MAX.

DRAWN	J FILKINGTON	01/21/09
CHECKED	M UHLEIN	01/21/09
RELEASED	M UHLEIN	01/21/09

UNLESS OTHERWISE SPECIFIED  
 ALL DIMENSIONS ARE IN INCHES,  
 MILLIMETERS IN BRACKETS.  
 DIMENSIONAL LIMITS APPLY  
 AFTER FINISH/PLATING.

**MCCOY** 1300 Arrow Point Dr.  
 GLOBAL Cedar Park, TX

TITLE  
**DISPLAY, DIGITAL, 5-1/2 DIGIT, LCD,  
 WIRELESS & CANBUS COMMUNICATION**

SIZE C	CAGE CODE 1MHK2	DRAWING NO. BGD01-CB001-0	REV C
SCALE NONE	DO NOT SCALE DRAWING		SHEET 1 OF 1