

# DIES AND INSERTS





## Dies & Inserts

Get the highest-quality dies and inserts in the fastest turnaround time. Since 2005, McCoy has been producing GRITFACE® Dies and Inserts; today we manufacture all the common dies and inserts used throughout the world.

McCoy inserts are machined, not cast, to provide the accuracy you need for critical applications. Our dies are heat-treated to provide maximum insert life. We also offer a variety of tooth patterns to securely grip the hardest strings of casing, tubing, and drill pipe.

We know that today's hostile well environments often use corrosion-resistant alloy (CRA) tubulars that require special handling tools. Our GRITFACE® Inserts allow you to use your standard handling tools with CRA strings because the GRITFACE® Coating prevents contamination and marking. It's economical and allows you to use the tools you have on hand.

## TABLE OF CONTENTS

TABLE OF CONTENTS .....	3
COMPANY INFORMATION .....	5
GRITFACE® DIE AND INSERT COATING .....	5
CONTACT US .....	6
TONG DIES .....	7
5/8" Width Tong Dies .....	8
1" Width Tong Dies .....	9
1-1/4" Width Tong Dies .....	10
Wrap Around Dies for Eckel 4-1/2" Hydra-Shift and 4-1/2 UHT Backup .....	11
Wrap Around Dies for Eckel 4-1/2" Hydra-Shift and 4-1/2 UHT Tong .....	11
Wrap Around Dies for Eckel 5-1/2" Hydra-Shift LS and 5-1/2" Hydra-Shift VS Backup .....	11
Wrap Around Dies for Eckel 5-1/2" Hydra-Shift LS and 5-1/2" Hydra-Shift VS Tong .....	12
PIPE HANDLING TOOL DIES & INSERTS .....	13
Inserts for 3-1/2" TS-100 Spider .....	13
Available Inserts for Baash-Ross® DU Handling Tools .....	13
Quantities Required for Baash-Ross® DU Rotary Slips .....	14
Inserts for Bilco Handling Tools .....	15
Inserts for Bilco Dual Tools .....	15
Inserts for Bilco Precision Slips and Elevators .....	16
INSERTS FOR HANDLING TOOLS .....	17
PART NUMBER DECODER .....	17
Inserts for BJ® HANDLING TOOLS .....	18
Inserts for BJ® YT, MYT, HYT .....	18
Quantities Required for BJ® YT, MYT, HYT .....	18
Inserts for BJ® YC, HYC, MYC, Casing Elevators, Etc. ....	19
Quantities Required for BJ® Casing Elevators .....	20
Inserts for Cavins® Handling Tools .....	21
Inserts for Guiberson F-1/H-1 Bowl and Slip .....	21
Inserts for Hydra Rig Bowl and Slip .....	22

Inserts for Hydra Rig 150 Bowl and Slip .....	22
Inserts for Hydra Rig 225 Bowl and Slip .....	22
Inserts for Hydra Rig 300 Bowl and Slip .....	23
Inserts for Kelco <sup>™</sup> Handling Tools.....	24
Inserts for Kelco <sup>™</sup> K-20 Style Tool .....	24
Inserts for Kelco <sup>™</sup> K-25 Style Tool .....	24
Inserts for Kelco <sup>™</sup> K-30 Style Tool .....	25
Inserts for Kelco <sup>™</sup> K-50 Style Tool .....	26
Inserts for Kelco <sup>™</sup> K-70 Style Tool .....	27
Inserts for Oil Country Handling Tools .....	28
Inserts for ST-80 Iron Roughneck Tools .....	28
Inserts for VARCO® Style Handling Tools.....	29
Quantities Required for Varco® Rotary Slips .....	30
Quantities Required for Varco® Casing Elevators.....	30
Quantities Required for Varco® Power Slips .....	31
Inserts for Woolley® .....	32
"C" Safety Clamps.....	32
Can be used in the following pipe sizes:.....	32
"MP, MPR" Safety Clamps .....	33
Can be used in the following pipe sizes:.....	33
"MPS" Safety Clamps .....	33
Can be used in the following pipe sizes:.....	33
"T" Safety Clamps .....	33
Can be used in the following pipe sizes:.....	33
Circular Buttons for VARCO® Handling Tools .....	34
Quantities Required for Varco® Drill Collar Slips (DCS).....	34
Quantities Required for Varco® Casing Slips (CMS-XL).....	34
Quantities Required for Varco® Casing Slips (CMS-XL).....	35

## COMPANY INFORMATION

McCoy Global, Dies & Inserts was formed in early 2005, with over a decade of research and experience in producing **GRITFACE®** dies and inserts. We have now applied this technology to manufacturing all of the most common dies and inserts used throughout the world, including the full line of wraparound dies for tongs, backups and bucking units. Our goal at McCoy Global is to deliver the fastest turnaround and highest quality of dies and inserts available.

McCoy Global's inserts are machined, not cast, to provide the accuracy required for today's critical applications. Our dies are heat treated to provide maximum insert life. A variety of tooth patterns are available to securely grip the hardest strings of casing, tubing and drillpipe.



Today's hostile well environments often use corrosion resistant alloy (CRA) tubulars that require special handling tools. McCoy Global can provide you with **GRITFACE®** inserts that allow you to utilize your standard handling tools with CRA strings. The **GRITFACE®** coating prevents contamination and marking caused by standard inserts.

McCoy Global maintains a large inventory of tong and handling tools inserts for fast response 24/7/365. Our Engineering and Manufacturing Departments are ready to respond to your needs for custom made dies and inserts for unique applications.

We guarantee you will be satisfied with McCoy Global products!

\*Trademark of McCoy Global USA, Inc. GRITFACE® die and inserts covered by US Patent 6,378,399; ,755,097; 7,036,397. Other US and foreign patents pending.

## GRITFACE® DIE AND INSERT COATING

The **GRITFACE®** die and insert coating system combines the use of extremely hard grit particles, high strength corrosion resistant brazing materials and application processes which insure optimum dimensional control.

Tungsten carbide grit particles are graded by size and shape to provide uniform granules with desired geometry. Different particle sizes are selected based on the intended application. Coatings on smooth faced dies use larger particles than the coatings applied to dies that have machined teeth. Coating thickness for small particles is approximately 0.010". Thickness for standard large particle coating is approximately 0.025".

Tungsten carbide refractory material manufacturing processes control the chemistry of the grit particles to prevent iron contamination<sup>1</sup>. The tungsten carbide particles are metallurgically bonded to the die substrate using a high strength nickel/chrome compound. It is important to note these materials are alloys together at extremely high temperatures so there is no free iron available to contaminate CRA tubulars. The same can be said for the iron that makes up the majority of the materials employed to produce CRA tubular goods. Third party metallurgical laboratory analysis has demonstrated through the use of scanning electron microscope and secondary electron imaging processes that the completed **GRITFACE®** dies and inserts do not contain free iron.

The tungsten carbide grit particles and brazing material are applied in controlled quantities using proprietary dispersion processes that align the particles and insure uniform distribution of materials in a single layer. The quantities of materials used insure the particles are securely fixed to the substrate but left with enough exposed surface to precisely grip oilfield tubulars. Brazing of the components takes place at 1800 degrees Fahrenheit in high vacuum furnaces where temperatures, time and cooling rates are precisely controlled. Mechanical properties of the die or insert substrate are controlled through metal selection and by using a combination of pre and post-brazing heat treatment processes. Conventional industrial brazing and flame spraying processes cannot provide the chemistry or dimensional control required to protect CRA tubulars from damage.

**Covered under US Patent 6,378,399; 6,755,097; 7,036,397.**

**Other US and foreign patents pending.**

## CONTACT US

### WESTERN HEMISPHERE

MCCOY GLOBAL INC. (CANADA)

Jesse Ke,  
Inside Sales Representative  
Phone: +1.780.701.1623  
Email: [jke@mccoysglobal.com](mailto:jke@mccoysglobal.com)

MCCOY GLOBAL USA, INC.

Jeff Perry,  
Supervisor Inside Sales  
Phone: +1.337.837.8847  
Email:  
[jperry@mccoysglobal.com](mailto:jperry@mccoysglobal.com)

Sensors, Scales & Systems  
Patrick Brown,  
Inside Sales Representative, Sensors & Systems  
Phone: +1.512.420.7032  
Fax: +1.337.837.6661

Spare Parts & Consumables  
Phone: +1.337.837.8847  
EMail: [pbrown@mccoysglobal.com](mailto:pbrown@mccoysglobal.com)

### EASTERN HEMISPHERE

MCCOY GLOBAL LTD (UK)

Gordon Duff,  
Sales Manager  
Phone: +44.7487.694928  
EMail: [gduff@mccoysglobal.com](mailto:gduff@mccoysglobal.com)

MCCOY GLOBAL LTD (International)

Iain Anderson,  
GM Global Sales & Service Eastern Hemisphere  
Phone: +971.5.6828.4899  
EMail: [ianderson@mccoysglobal.com](mailto:ianderson@mccoysglobal.com)

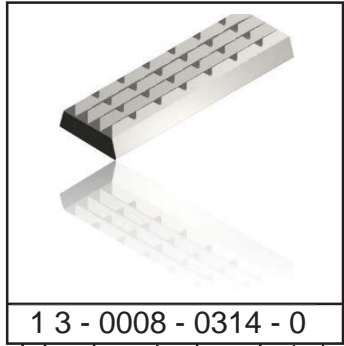
MCCOY GLOBAL Inc. (Russia)

Andrei Dmitriev,  
Sales Manager, Canada & FSU  
Phone: +1.780.919.3604  
Email: [admitriev@mccoysglobal.com](mailto:admitriev@mccoysglobal.com)

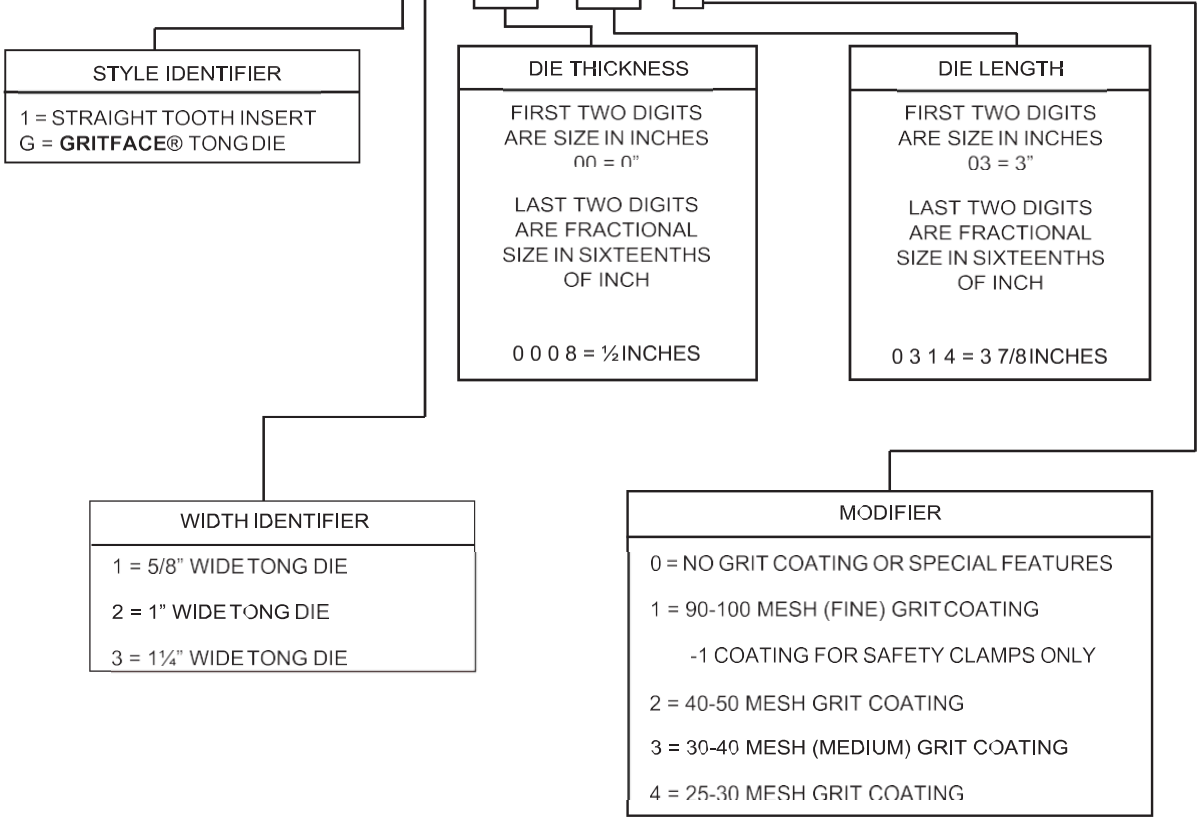
Андрей Дмитриевич Дмитриев,  
Менеджер по продажам, Страны  
бывшего СССР и Канада  
Phone: +1.780.919.3604  
Email: [admitriev@mccoysglobal.com](mailto:admitriev@mccoysglobal.com)

# TONG DIES

Part Number Decoder

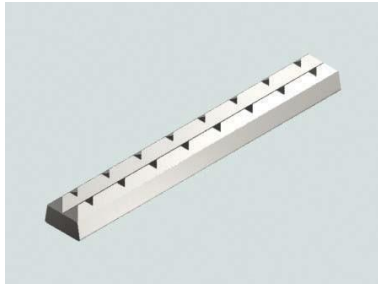


1 3 - 0008 - 0314 - 0



# 5/8" Width Tong Dies

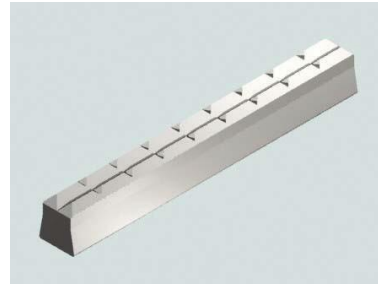
Offered in three tooth patterns: Standard (-0), Pyramid (-P), Fine Pyramid (-FP) and GRITFACE® (G1-XXXX-XXX-5)



5/8" Standard Tooth Tong Die



5/8" GRITFACE® Tong Die Use with corrosion resistant alloy (CRA) tubulars



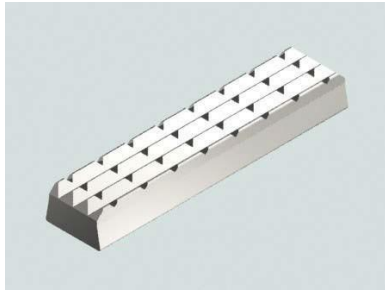
5/8" Standard Tooth (Reducer) Tong Die

Standard Tooth Number	Pyramid Tooth Number	Fine Pyramid Tooth Number	GRITFACE® Number	OEM Reference Number	Dimensions
11-0005-314-0	11-0005-314-P	11-0005-314-FP	G1-0005-314-5	4052	5/8" x 5/16" x 3-7/8"
11-0005-308-0	11-0005-308-P	11-0005-308-FP	G1-0005-308-5	-	5/8" x 5/16" x 3-1/2"
11-0005-408-0	11-0005-408-P	11-0005-408-FP	G1-0005-408-5	4002	5/8" x 5/16" x 4-1/2"
11-0006-115-0	11-0006-115-P	11-0006-115-FP	G1-0006-115-5	4009	5/8" x 3/8" x 1-15/16"
11-0006-308-0	11-0006-308-P	11-0006-308-FP	G1-0006-308-5	4030	5/8" x 3/8" x 3-1/2"
11-0006-314-0	11-0006-314-P	11-0006-314-FP	G1-0006-314-5	4051	5/8" x 3/8" x 3-7/8"
11-0006-408-0	11-0006-408-P	11-0006-408-FP	G1-0006-408-5	4001	5/8" x 3/8" x 4-1/2"
11-0007-308-0	11-0007-308-P	11-0007-308-FP	G1-0007-308-5	-	5/8" x 7/16" x 3-1/2"
11-0007-408-0	11-0007-408-P	11-0007-408-FP	G1-0007-408-5	-	5/8" x 7/16" x 4-1/2"
11-0008-314-0	11-0008-314-P	11-0008-314-FP	G1-0008-314-5	-	5/8" x 1/2" x 3-7/8"
11-0008-408-0	11-0008-408-P	11-0008-408-FP	G1-0008-408-5	-	5/8" x 1/2" x 4-1/2"
11-0009-308-0	11-0009-308-P	11-0009-308-FP	G1-0009-308-5	-	5/8" x 9/16" x 3-1/2"
11-0009-314-0	11-0009-314-P	11-0009-314-FP	G1-0009-314-5	-	5/8" x 9/16" x 3-7/8"
11-0009-408-0	11-0009-408-P	11-0009-408-FP	G1-0009-408-5	-	5/8" x 9/16" x 4-1/2"
11-0010-208-0	11-0010-208-P	11-0010-208-FP	G1-0010-208-5	-	5/8" x 5/8" x 2-1/2"
11-0010-308-0	11-0010-308-P	11-0010-308-FP	G1-0010-308-5	4032	5/8" X 5/8" X 3-1/2"
11-0010-314-0	11-0010-314-P	11-0010-314-FP	G1-0010-314-5	4054	5/8" X 5/8" X 3-7/8"
11-0010-408-0	11-0010-408-P	11-0010-408-FP	G1-0010-408-5	4004	5/8" X 5/8" X 4-1/2"
11-0011-308-0	11-0011-308-P	11-0011-308-FP	G1-0011-308-5	-	5/8" X 11/16" X 3-1/2"
11-0011-314-0	11-0011-314-P	11-0011-314-FP	G1-0011-314-5	4055	5/8" X 11/16" X 3-7/8"
11-0011-408-0	11-0011-408-P	11-0011-408-FP	G1-0011-408-5	4005	5/8" X 11/16" X 4-1/2"
11-0531-308-0	11-0531-308-P	11-0531-308-FP	G1-0531-308-5	4031	5/8" x 17/32" x 3-1/2"
11-0531-314-0	11-0531-314-P	11-0531-314-FP	G1-0531-314-5	4053	5/8" x 17/32" x 3-7/8"
11-0531-408-0	11-0531-408-P	11-0531-408-FP	G1-0531-408-5	4003	5/8" x 17/32" x 4-1/2"

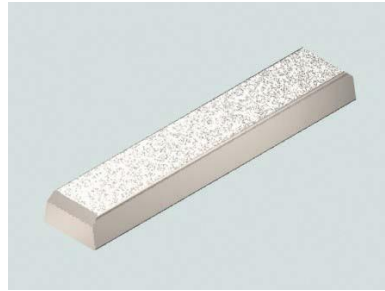


# 1" Width Tong Dies

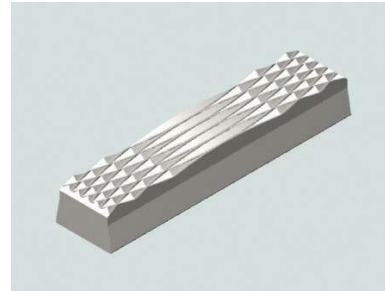
Offered in four tooth patterns: Standard (-0), Pyramid (-P), Fine Pyramid (-FP), Diamond (-D), and GRITFACE® (G2-XXXX-XXX-5)



1" Standard Tooth Tong Die



1" GRITFACE® Tong Die Use with corrosion resistant alloy (CRA) tubulars

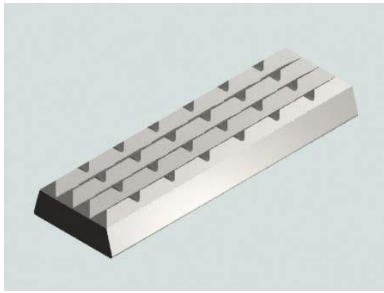


1" Diamond Tooth Tong Die

Standard Tooth Number	Pyramid Tooth Number	Fine Pyramid Tooth Number	Diamond Tooth Number	GRITFACE® Number	OEM Reference Number	Dimensions
12-0006-107-0	12-0006-107-P	12-0006-107-FP	12-0006-107-D	G2-0006-107-5	1507	1" x 3/8" x 1-7/16"
12-0006-114-0	12-0006-114-P	12-0006-114-FP	12-0006-114-D	G2-0006-114-5	1506	1" x 3/8" x 1-7/8"
12-0006-115-0	12-0006-115-P	12-0006-115-FP	12-0006-115-D	G2-0006-115-5	1501	1" x 3/8" x 1-15/16"
12-0006-202-0	12-0006-202-P	12-0006-202-FP	12-0006-202-D	G2-0006-202-5	1502	1" x 3/8" x 2-1/8"
12-0006-208-0	12-0006-208-P	12-0006-208-FP	12-0006-208-D	G2-0006-208-5	1503	1" x 3/8" x 2-1/2"
12-0006-210-0	12-0006-210-P	12-0006-210-FP	12-0006-210-D	G2-0006-210-5	1504	1" x 3/8" x 2-5/8"
12-0006-214-0	12-0006-214-P	12-0006-214-FP	12-0006-214-D	G2-0006-214-5	-	1" x 3/8" x 2-7/8"
12-0006-300-0	12-0006-300-P	12-0006-300-FP	12-0006-300-D	G2-0006-300-5	-	1" x 3/8" x 3"
12-0006-314-0	12-0006-314-P	12-0006-314-FP	12-0006-314-D	G2-0006-314-5	1505	1" x 3/8" x 3-7/8"
12-0006-404-0	12-0006-404-P	12-0006-404-FP	12-0006-404-D	G2-0006-404-5	1508	1" x 3/8" x 4-1/4"
12-0006-408-0	12-0006-408-P	12-0006-408-FP	12-0006-408-D	G2-0006-408-5	1509	1" x 3/8" x 4-1/2"
12-0006-500-0	12-0006-500-P	12-0006-500-FP	12-0006-500-D	G2-0006-500-5	-	1" x 3/8" x 5"
12-0006-512-0	12-0006-512-P	12-0006-512-FP	12-0006-512-D	G2-0006-512-5	1510	1" x 3/8" x 5-3/4"
12-0007-314-0	12-0007-314-P	12-0007-314-FP	12-0007-314-D	G2-0007-314-5	1511	1" x 7/16" x 3-7/8"
12-0008-314-0	12-0008-314-P	12-0008-314-FP	12-0008-314-D	G2-0008-314-5	1521	1" x 1/2" x 3-7/8"
12-0008-500-0	12-0008-500-P	12-0008-500-FP	12-0008-500-D	G2-0008-500-5	1522	1" x 1/2" x 5"
12-0009-208-0	12-0009-208-P	12-0009-208-FP	12-0009-208-D	G2-0009-208-5	1531	1" x 9/16" x 2-1/2"
12-0009-314-0	12-0009-314-P	12-0009-314-FP	12-0009-314-D	G2-0009-314-5	1532	1" x 9/16" x 3-7/8"
12-0010-314-0	12-0010-314-P	12-0010-314-FP	12-0010-314-D	G2-0010-314-5	1541	1" x 5/8" x 3-7/8"
12-0011-208-0	12-0011-208-P	12-0011-208-FP	12-0011-208-D	G2-0011-208-5	-	1" x 11/16" x 2-1/2"
12-0011-300-0	12-0011-300-P	12-0011-300-FP	12-0011-300-D	G2-0011-300-5	-	1" x 11/16" x 3"
12-0011-314-0	12-0011-314-P	12-0011-314-FP	12-0011-314-D	G2-0011-314-5	1542	1" x 11/16" x 3-7/8"
12-0012-314-0	12-0012-314-P	12-0012-314-FP	12-0012-314-D	G2-0012-314-5	1543	1" x 3/4" x 3-7/8"
12-0012-404-0	12-0012-404-P	12-0012-404-FP	12-0012-404-D	G2-0012-404-5	1508	1" x 3/4" x 4-1/4"

# 1-1/4" Width Tong Dies

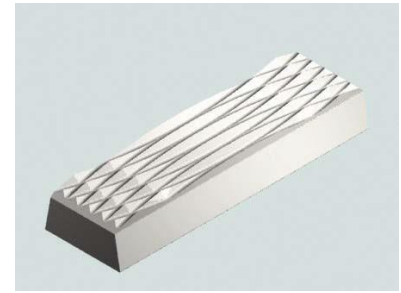
Offered in all five tooth patterns: Standard (-0), Diamond (-D), Pyramid (-P), Fine Pyramid (-FP) and GRITFACE® (G3-XXXX-XXX-5)



1-1/4" Standard Tooth Tong Die



1-1/4" GRITFACE® Tong Die Use with corrosion resistant alloy (CRA) tubulars



1-1/4" Diamond Tooth Tong Die

Standard Tooth Number	Pyramid Tooth Number	Fine Tooth Pyramid Number	Diamond Tooth Number	GRITFACE® Number	OEM Reference Number	Dimensions
13-0006-208-0	13-0006-208-P	13-0006-208-FP	13-0006-208-D	G3-0006-208-5	-	1-1/4" x 3/8" x 2-1/2"
13-0006-314-0	13-0006-314-P	13-0006-314-FP	13-0006-314-D	G3-0006-314-5	1614	1-1/4" x 3/8" x 3-7/8"
13-0006-500-0	13-0006-500-P	13-0006-500-FP	13-0006-500-D	G3-0006-500-5	1610	1-1/4" x 3/8" x 5"
13-0006-514-0	13-0006-514-P	13-0006-514-FP	13-0006-514-D	G3-0006-514-5	-	1-1/4" x 3/8" x 5-7/8"
13-0007-208-0	13-0007-208-P	13-0007-208-FP	13-0007-208-D	G3-0007-208-5	1611	1-1/4" x 7/16" x 2-1/2"
13-0007-314-0	13-0007-314-P	13-0007-314-FP	13-0007-314-D	G3-0007-314-5	1612	1-1/4" x 7/16" x 3-7/8"
13-0007-500-0	13-0007-500-P	13-0007-500-FP	13-0007-500-D	G3-0007-500-5	1617	1-1/4" x 7/16" x 5"
13-0007-514-0	13-0007-514-P	13-0007-514-FP	13-0007-514-D	G3-0007-514-5	-	1-1/4" x 7/16" x 5-7/8"
13-0008-208-0	13-0008-208-P	13-0008-208-FP	13-0008-208-D	G3-0008-208-5	1612	1-1/4" x 1/2" x 2-1/2"
13-0008-214-0	13-0008-214-P	13-0008-214-FP	13-0008-214-D	G3-0008-214-5	-	1-1/4" x 1/2" x 2-7/8"
13-0008-314-0	13-0008-314-P	13-0008-314-FP	13-0008-314-D	G3-0008-314-5	1601	1-1/4" x 1/2" x 3-7/8"
13-0008-400-0	13-0008-400-P	13-0008-400-FP	13-0008-400-D	G3-0008-400-5	Diamond (9FH-70622-2)	1-1/4" x 1/2" x 4"
13-0008-500-0	13-0008-500-P	13-0008-500-FP	13-0008-500-D	G3-0008-500-5	1602 / 16401-6 / B+V-70676	1-1/4" x 1/2" x 5"
13-0008-506-0	13-0008-506-P	13-0008-506-FP	13-0008-506-D	G3-0008-506-5	Diamond (9FH-70622-1)	1-1/4" x 1/2" x 5-3/8"
13-0008-508-0	13-0008-508-P	13-0008-508-FP	13-0008-508-D	G3-0008-508-5	-	1-1/4" x 1/2" x 5-1/2"
13-0008-514-0	13-0008-514-P	13-0008-514-FP	13-0008-514-D	G3-0008-514-5	1603 / 16402-6 / B+V-70675	1-1/4" x 1/2" x 5-7/8"
13-0009-208-0	13-0009-208-P	13-0009-208-FP	13-0009-208-D	G3-0009-208-5	1621	1-1/4" x 9/16" x 2-1/2"
13-0009-314-0	13-0009-314-P	13-0009-314-FP	13-0009-314-D	G3-0009-314-5	1622	1-1/4" x 9/16" x 3-7/8"
13-0009-500-0	13-0009-500-P	13-0009-500-FP	13-0009-500-D	G3-0009-500-5	1623	1-1/4" x 9/16" x 5"
13-0009-514-0	13-0009-514-P	13-0009-514-FP	13-0009-514-D	G3-0009-514-5	-	1-1/4" x 9/16" x 5-7/8"
13-0010-208-0	13-0010-208-P	13-0010-208-FP	13-0010-208-D	G3-0010-208-5	1631	1-1/4" x 5/8" x 2-1/2"
13-0010-314-0	13-0010-314-P	13-0010-314-FP	13-0010-314-D	G3-0010-314-5	1632	1-1/4" x 5/8" x 3-7/8"
13-0010-500-0	13-0010-500-P	13-0010-500-FP	13-0010-500-D	G3-0010-500-5	1633	1-1/4" x 5/8" x 5"
13-0010-514-0	13-0010-514-P	13-0010-514-FP	13-0010-514-D	G3-0010-514-5	1694	1-1/4" x 5/8" x 5-7/8"
13-0011-208-0	13-0011-208-P	13-0011-208-FP	13-0011-208-D	G3-0011-208-5	1641	1-1/4" x 11/16" x 2-1/2"
13-0011-314-0	13-0011-314-P	13-0011-314-FP	13-0011-314-D	G3-0011-314-5	1642	1-1/4" x 11/16" x 3-7/8"
13-0011-500-0	13-0011-500-P	13-0011-500-FP	13-0011-500-D	G30011-500-5	1646	1-1/4" x 11/16" x 5"
13-0011-514-0	13-0011-514-P	13-0011-514-FP	13-0011-514-D	G3-0011-514-5	1644	1-1/4" x 11/16" x 5-7/8"
13-0012-308-0	13-0012-308-P	13-0012-308-FP	13-0012-308-D	G3-0012-308-5	-	1-1/4" x 3/4" x 3-1/2"
13-0012-314-0	13-0012-314-P	13-0012-314-FP	13-0012-314-D	G3-0012-314-5	1651	1-1/4" x 3/4" x 3-7/8"
13-0012-500-0	13-0012-500-P	13-0012-500-FP	13-0012-500-D	G3-0012-500-5	1693	1-1/4" x 3/4" x 5"
13-0012-514-0	13-0012-514-P	13-0012-514-FP	13-0012-514-D	G3-0012-514-5	1649	1-1/4" x 3/4" x 5-7/8"
13-0013-314-0	13-0013-314-P	13-0013-314-FP	13-0013-314-D	G3-0013-314-5	1661	1-1/4" x 13/16" x 3-7/8"
13-0013-500-0	13-0013-500-P	13-0013-500-FP	13-0013-500-D	G3-0013-500-5	1664	1-1/4" x 13/16" x 5"
13-0013-514-0	13-0013-514-P	13-0013-514-FP	13-0013-514-D	G3-0013-514-5	-	1-1/4" x 13/16" x 5-7/8"
13-0014-314-0	13-0014-314-P	13-0014-314-FP	13-0014-314-D	G3-0014-314-5	1671	1-1/4" x 7/8" x 3-7/8"
13-0014-500-0	13-0014-500-P	13-0014-500-FP	13-0014-500-D	G3-0014-500-5	1673	1-1/4" x 7/8" x 5"
13-0014-514-0	13-0014-514-P	13-0014-514-FP	13-0014-514-D	G3-0014-514-5	1672	1-1/4" x 7/8" x 5-7/8"
13-0015-314-0	13-0015-314-P	13-0015-314-FP	13-0015-314-D	G3-0015-314-5	1681	1-1/4" x 15/16" x 3-7/8"
13-0015-500-0	13-0015-500-P	13-0015-500-FP	13-0015-500-D	G3-0015-500-5	1682	1-1/4" x 15/16" x 5"

13-0015-514-0	13-0015-514-P	13-0015-514-FP	13-0015-514-D	G3-0015-514-5	-	1-1/4" x 15/16" x 5-7/8"
13-0016-314-0	13-0016-314-P	13-0016-314-FP	13-0016-314-D	G3-0016-314-5	1691	1-1/4" x 1" x 3-7/8"
13-0016-500-0	13-0016-500-P	13-0016-500-FP	13-0016-500-D	G3-0016-500-5	1697	1-1/4" x 1" x 5"
13-0016-514-0	13-0016-514-P	13-0016-514-FP	13-0016-514-D	G3-0016-514-5	1692	1-1/4" x 1" x 5-7/8"
13-0101-314-0	13-0101-314-P	13-0101-314-FP	13-0101-314-D	G3-0101-314-5	1690	1-1/4" x 1-1/16" x 3-7/8"
13-0102-314-0	13-0102-314-P	13-0102-314-FP	13-0102-314-D	G3-0102-314-5	-	1-1/4" x 1-1/8" x 3-7/8"
13-0102-500-0	13-0102-500-P	13-0102-500-FP	13-0102-500-D	G3-0102-500-5	1684	1-1/4" x 1-1/8" x 5"
13-0108-500-0	13-0108-500-P	13-0108-500-FP	13-0108-500-D	G3-0108-500-5	1676	1-1/4" x 1-1/2" x 5"

Special Notes: We cannot manufacture thicker than 1-1/2", or thinner than 3/8"  
We can only manufacture GRITFACE® dies to be contoured, not steel dies.

## Wrap Around Dies for Eckel 4-1/2" Hydra-Shift and 4-1/2 UHT Backup

Standard Tooth Number	GRITFACE® Number	Fine Tooth Number	OEM Reference Number	Description
EE-NNB-0206-0	GE-NNB-0206-5	EE-NNB-0206-F	112985	2-3/8"
EE-NNB-0214-0	GE-NNB-0214-5	EE-NNB-0214-F	112986	2-7/8"
EE-NNB-0308-0	GE-NNB-0308-5	EE-NNB-0308-F	112987	3-1/2"
EE-NNB-0400-0	GE-NNB-0400-5	EE-NNB-0400-F	112988	4"
EE-NNB-0408-0	GE-NNB-0408-5	EE-NNB-0408-F	113192	4-1/2"

## Wrap Around Dies for Eckel 4-1/2" Hydra-Shift and 4-1/2 UHT Tong

Standard Tooth Number	GRITFACE® Number	Fine Tooth Number	OEM Reference Number	Description
EE-0408L-0206-0	GE-0408L-0206-5	EE-0408L-0206-F	106490	2-3/8"
EE-0408L-0214-0	GE-0408L-0214-5	EE-0408L-0214-F	106489	2-7/8"
EE-0408L-0308-0	GE-0408L-0308-5	EE-0408L-0308-F	106488	3-1/2"
EE-0408L-0400-0	GE-0408L-0400-5	EE-0408L-0400-F	106885	4"
EE-0408L-0408-0	GE-0408L-0408-5	EE-0408L-0408-F	106884	4-1/2"

## Wrap Around Dies for Eckel 5-1/2" Hydra-Shift LS and 5-1/2" Hydra-Shift VS Backup

Standard Tooth Number	GRITFACE® Number	Fine Tooth Number	OEM Reference Number	Description
EE-OTB-0206-0	GE-OTB-0206-5	EE-OTB-0206-F	113073	2-3/8"
EE-OTB-0214-0	GE-OTB-0214-5	EE-OTB-0214-F	113074	2-7/8"
EE-OTB-0308-0	GE-OTB-0308-5	EE-OTB-0308-F	113075	3-1/2"
EE-OTB-0400-0	GE-OTB-0400-5	EE-OTB-0400-F	113076	4"
EE-OTB-0408-0	GE-OTB-0408-5	EE-OTB-0408-F	113077	4-1/2"
EE-OTB-0500-0	GE-OTB-0500-5	EE-OTB-0500-F	113078	5"
EE-OTB-0508-0	GE-OTB-0508-5	EE-OTB-0508-F	107383	5-1/2"
EE-OTB-06050-0	GE-OTB-06050-5	EE-OTB-06050-F	-	6.050"

## Wrap Around Dies for Eckel 5-1/2" Hydra-Shift LS and 5-1/2" Hydra-Shift VS Tong

Standard Tooth Number	GRITFACE® Number	Fine Tooth Number	OEM Reference Number	Description
EE-0508P-0206-0	GE-0508P-0206-5	EE-0508P-0206-F	107482	2-3/8"
EE-0508P-0214-0	GE-0508P-0214-5	EE-0508P-0214-F	107481	2-7/8"
EE-0508P-0308-0	GE-0508P-0308-5	EE-0508P-0308-F	107480	3-1/2"
EE-0508P-0400-0	GE-0508P-0400-5	EE-0508P-0400-F	107479	4"
EE-0508P-0408-0	GE-0508P-0408-5	EE-0508P-0408-F	107444	4-1/2"
EE-0508P-0500-0	GE-0508P-0500-5	EE-0508P-0500-F	107516	5"
EE-0508P-0508-0	GE-0508P-0508-5	EE-0508P-0508-F	107383	5-1/2"
EE-0508P-06050-0	GE-0508P-06050-5	EE-0508P-06050-F	-	6.050"

## PIPE HANDLING TOOL DIES & INSERTS

### Inserts for 3-1/2" TS-100 Spider

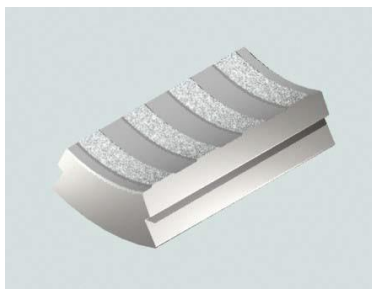
Standard Tooth Number	OEM Reference Number	Description	Tool Size	Pipe Size	Quantity
DU-0308-0100-0	7502-A-5076	Reducer	3-1/2"	1" (1.315")	9
DU-0308-0104-0	7502-A-5075	Reducer	3-1/2"	1-1/4" (1.660")	9
DU-0308-0108-0	7502-A-5074	Reducer	3-1/2"	1-1/2" (1.900")	9
DU-0308-0200-0	7502-A-5073	Reducer	3-1/2"	2"	9
DU-0308-0201-0	7502-A-5072	Reducer	3-1/2"	2-1/16"	9
DU-0308-0206-0	7502-A-5071	Reducer	3-1/2"	2-3/8"	9
DU-0308-0214-0	7502-A-5070	Reducer	3-1/2"	2-7/8"	9
DU-0308-0302-0	7502-A-318	Reducer	3-1/2"	3-1/8"	9
DU-0308-0304-0	7502-A-314	-	3-1/2"	3-1/4"	-
DU-0308-0306-0	7502-A-338	Reducer	3-1/2"	3-3/8"	9
DU-0308-0308-0	7502-A-5069	Basic	3-1/2"	3-1/2"	9

### Available Inserts for Baash-Ross® DU Handling Tools

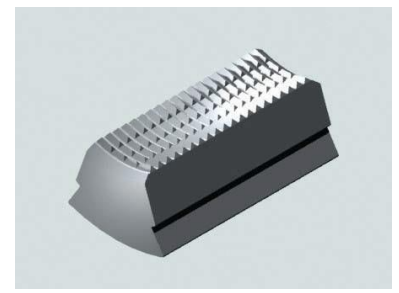
(GRITFACE® AND FULL FACE INSERTS ALSO AVAILABLE)



Baash-Ross DU Standard Tooth Insert



Baash-Ross® DU 5-1/2" GRITFACE® Insert  
Use with corrosion resistant alloy (CRA) tubulars

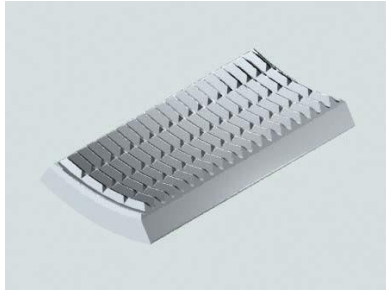


Baash-Ross® DU Full Face Insert

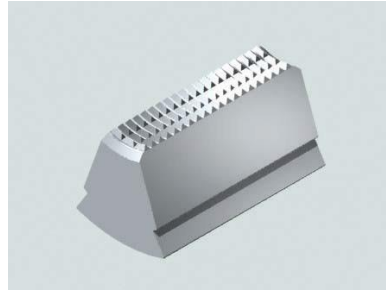
Standard Tooth Number	GRITFACE® Number	Full Face Number	OEM Reference Number	Description	Tool Size	Pipe Size
DU-0408-0206-0	GU-0408-0206-4	DU-0408-0206-FF	7613-A-82	Reducer	4-1/2"	2-3/8"
DU-0408-0214-0	GU-0408-0214-4	DU-0408-0214-FF	7613-B-82	Reducer	4-1/2"	2-7/8"
DU-0408-0300-0	GU-0408-0300-4	-	-	Reducer	4-1/2"	3"
DU-0408-0302-0	GU-0408-0302-4	-	-	Reducer	4-1/2"	3-1/8"
DU-0408-0304-0	GU-0408-0304-4	-	-	Reducer	4-1/2"	3-1/4"
DU-0408-0308-0	GU-0408-0308-4	DU-0408-0308-FF	7613-C-82	Reducer	4-1/2"	3-1/2"
DU-0408-0312-0	GU-0408-0312-4	DU-0408-0312-FF	-	Reducer	4-1/2"	3-3/4"
DU-0408-0400-0	GU-0408-0400-4	DU-0408-0400-FF	7613-FF-81	Reducer	4-1/2"	4"
DU-0408-0402-0	GU-0408-0402-4	-	-	Reducer	4-1/2"	4-1/8"
DU-0408-0404-0	GU-0408-0404-4	DU-0408-0404-FF	-	Reducer	4-1/2"	4-1/4"
DU-0408-0406-0	GU-0408-0406-4	-	-	Reducer	4-1/2"	4-3/8"
DU-0408-0408-0	GU-0408-0408-4	DU-0408-0408-FF	7613-A-81	Basic	4-1/2"	4-1/2"
DU-0508-0308-0	GU-0508-0308-4	DU-0508-0308-FF	7613-E-82	Reducer	5-1/2"	3-1/2"
DU-0508-0312-0	GU-0508-0312-4	DU-0508-0312-FF	-	Reducer	5-1/2"	3-3/4"
DU-0508-0400-0	GU-0508-0400-4	DU-0508-0400-FF	7613-D-81	Reducer	5-1/2"	4"
DU-0508-0402-0	GU-0508-0402-4	DU-0508-0402-FF	-	Reducer	5-1/2"	4-1/8"
DU-0508-0404-0	GU-0508-0404-4	DU-0508-0404-FF	-	Reducer	5-1/2"	4-1/4"
DU-0508-0406-0	GU-0508-0406-4	DU-0508-0406-FF	-	Reducer	5-1/2"	4-3/8"
DU-0508-0408-0	GU-0508-0408-4	DU-0508-0408-FF	7613-E-81	Reducer	5-1/2"	4-1/2"
DU-0508-0412-0	GU-0508-0412-4	DU-0508-0412-FF	7613-F-81	Reducer	5-1/2"	4-3/4"
DU-0508-0500-0	GU-0508-0500-4	DU-0508-0500-FF	7613-G-81	Reducer	5-1/2"	5"

DU-0508-0508-0	GU-0508-0508-4	DU-0508-0508-FF	7613-H-81	Basic	5-1/2"	5-1/2"
DU-0508-0512-0	GU-0508-0512-4	DU-0508-0512-FF	-	Oversize	5-1/2"	5-3/4"
DU-0700-0508-0	GU-0700-0508-4	-	7613-Z-81	Reducer	7"	5-1/2"
DU-0700-0512-0	GU-0700-0512-4	DU-0700-0512-FF	7613-BB-81	Reducer	7"	5-3/4"
DU-0700-0514-0	GU-0700-0514-4	-	-	Reducer	7"	5-7/8"
DU-0700-0600-0	GU-0700-0600-4	-	7613-CC-81	Reducer	7"	6"
DU-0700-0610-0	GU-0700-0610-4	-	7613-DD-81	Reducer	7"	6-5/8"
DU-0700-0700-0	GU-0700-0700-4	-	7613-EE-81	Basic	7"	7"

Special Notes: 2-3/8" OD Pipe Size is the smallest we can manufacture for 4-1/2" Body Style Tools 3-1/2" OD Pipe Size is the smallest we can manufacture for 5-1/2" Body Style Tools 5-1/2" OD Pipe Size is the smallest we can manufacture for 7" Body Style Tools



Baash-Ross® DU Full Face Insert

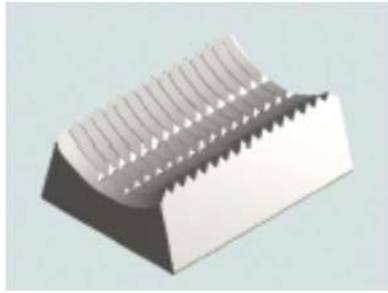


Baash-Ross® DU Full Face Reducer

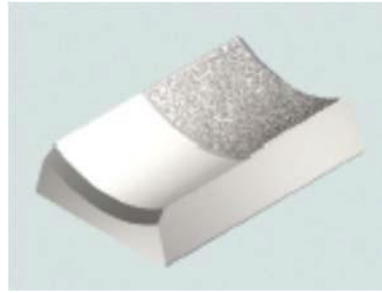
## Quantities Required for Baash-Ross® DU Rotary Slips

Slip Size	Pipe Size	DU Regular	DU Long
4-1/2"	All	18	24
5-1/2"	All	18	24
7"	All	18	24

## Inserts for Bilco Handling Tools



Bilco Standard Tooth Insert for Dual Tools

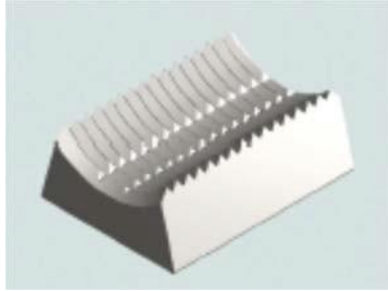


Bilco GRITFACE® Insert for Dual Tools Use with corrosion resistant alloy (CRA) tubulars

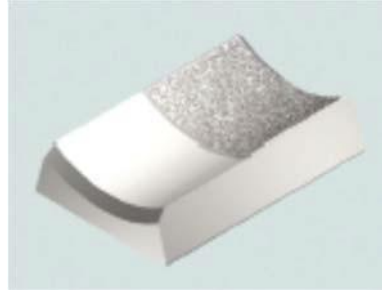
## Inserts for Bilco Dual Tools

Standard Tooth Number	GRITFACE® Number	OEM Reference Number	Description	Quantity
FF-0308-0206-0	GF-0308-0206-4	6603	3-1/2" x 2-3/8"	36
FF-0308-0214-0	GF-0308-0214-4	6602	3-1/2" x 2-7/8"	36
FF-0308-0308-0	GF-0308-0308-4	6601	3-1/2" x 3-1/2"	36
FF-0508-0206-0	GF-0508-0206-4	6626W	5-1/2" x 2-3/8"	48
FF-0508-0214-0	GF-0508-0214-4	6624W	5-1/2" x 2-7/8"	48
FF-0508-0308-0	GF-0508-0308-4	6623W	5-1/2" x 3-1/2"	48
FF-0508-0400-0	GF-0508-0400-4	6625W	5-1/2" x 4"	48
FF-0508-0408-0	GF-0508-0408-4	6622W	5-1/2" x 4-1/2"	48
FF-0508-0500-0	GF-0508-0500-4	6621W	5-1/2" x 5"	48
FF-0508-0508-0	GF-0508-0508-4	-	5-1/2" x 5-1/2"	48

Special Note: 2-3/8" OD Pipe Size is the smallest that we can manufacture



Bilco 5-1/2" x 4" Insert for Precision Slips



Bilco 5-1/2" x 4-1/2" Insert for Precision Slips

## Inserts for Bilco Precision Slips and Elevators

Standard Tooth Number	OEM Reference Number	Description	Quantity
FF-0308-0206-WP	-	3-1/2" x 2-3/8" Wide Body Insert	18
FF-0308-0214-WP	6602WP	3-1/2" x 2-7/8" Wide Body Insert	18
FF-0308-0308-WP	6601WP	3-1/2" x 3-1/2" Wide Body Insert	18
FF-0408-0408-WP	-	4-1/2" x 4-1/2" Wide Body Insert	18
FF-0508-0400-WP	-	5-1/2" x 4" Wide Body Insert	18
FF-0508-0408-WP	6622WP	5-1/2" x 4-1/2" Wide Body Insert	18
FF-0508-0500-WP	6621WP	5-1/2" x 5" Wide Body Insert	18
FF-0508-0508-WP	-	5-1/2" x 5-1/2" Wide Body Insert	18

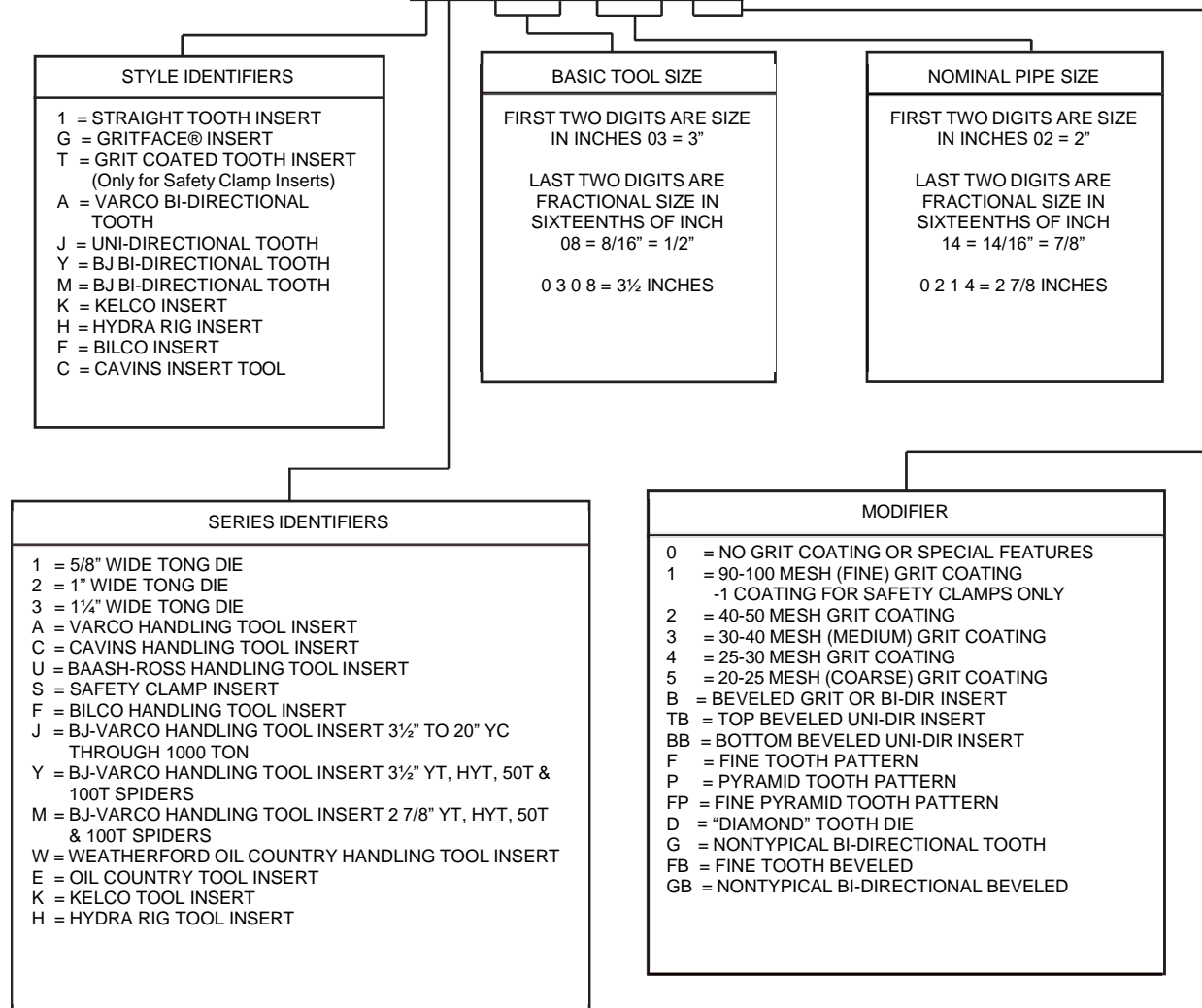


# INSERTS FOR HANDLING TOOLS

## PART NUMBER DECODER

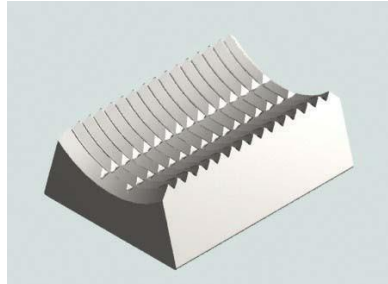


GA - 0308 - 0214 - 2B

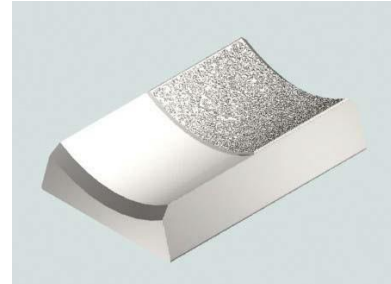


## Inserts for BJ® HANDLING TOOLS

Fine Tooth, GRITFACE®, Bottom Beveled, Top Beveled, Bi-Directional and Bi-Directional Beveled inserts also available.



BJ® Standard Tooth Insert 2-7/8" YT, HYT, MYT, 50T & 100T Spiders

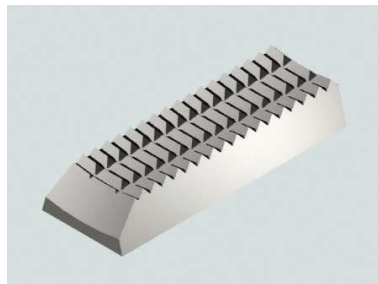


BJ® GRITFACE® Insert 2-7/8" YT, HYT, MYT, 50T & 100T Spiders Use with corrosion resistant alloy (CRA) tubulars

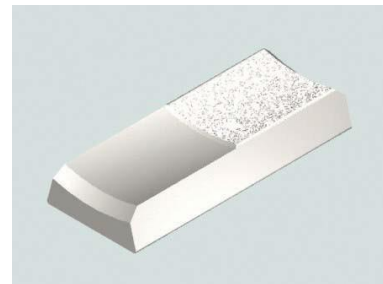
## Inserts for BJ® YT, MYT, HYT

Standard Tooth Number	GRITFACE® Number	OEM Reference Number	Description	Tool Size	Pipe Size
MM-0214-0214-0	MM-0214-0214-4	24773	Basic	2-7/8"	2-7/8"
MM-0214-0206-0	MM-0214-0206-4	29255	Reducer	2-7/8"	2-3/8"
YY-0308-0214-0	YY-0308-0214-4	30358	Reducer	3-1/2"	2-7/8"
YY-0308-0308-0	YY-0308-0308-4	24774	Basic	3-1/2"	3-1/2"

Special Note: 2-3/8" OD Pipe Size is the smallest we can manufacture



BJ® Standard Tooth Insert 3-1/2" YT, HYT, MYT, 50T & 100T Spiders



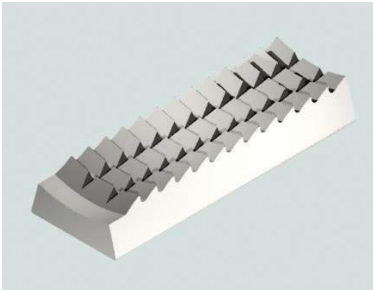
BJ® GRITFACE® Insert 3-1/2" YT, HYT, MYT, 50T & 100T Spiders Use with corrosion resistant alloy (CRA) tubulars

## Quantities Required for BJ® YT, MYT, HYT

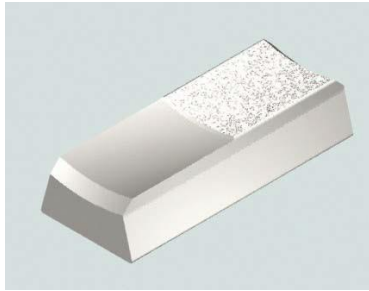
BJ® Tool Size	YT	MYT	HYT
3-1/2" (YY)	24	8	32
2-7/8" (MM)	12	8	16

# Inserts for BJ® YC, HYC, MYC, Casing Elevators, Etc.

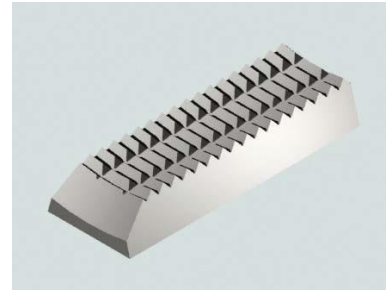
Fine Tooth, GRITFACE®, Bottom Beveled, Top Beveled, Bi-Directional and Bi-Directional Beveled inserts also available.



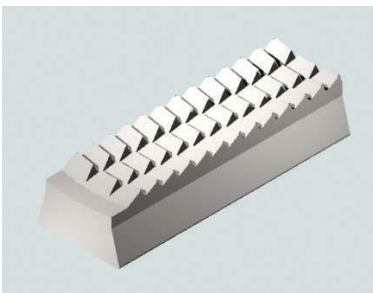
BJ® Standard Tooth Insert



BJ® GRITFACE® (Reducer) Insert Use with corrosion resistant alloy (CRA) tubulars



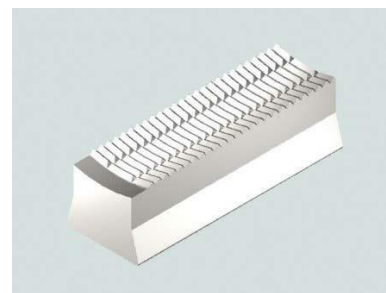
BJ® Bidirectional Beveled Insert



BJ® Standard Tooth Reducer



BJ® GRITFACE® Beveled Reducer Use with corrosion resistant alloy (CRA) tubulars



BJ® Fine Tooth Reducer

Standard Tooth Number	GRITFACE® Number	Bi-Directional Number	OEM Reference Number	Description	Tool Size	Pipe Size
JJ-0308-0206-0	GJ-0308-0206-4	JJ-0308-0206-G	24777	Reducer	3-1/2"	2-3/8"
JJ-0308-0214-0	GJ-0308-0214-4	JJ-0308-0214-G	25780	Reducer	3-1/2"	2-7/8"
JJ-0308-0308-0	GJ-0308-0308-4	JJ-0308-0308-G	16441	Basic	3-1/2"	3-1/2"
JJ-0408-0308-0	GJ-0408-0308-4	JJ-0408-0308-G	24779	Reducer	4-1/2"	3-1/2"
JJ-0408-0400-0	GJ-0408-0400-4	JJ-0408-0400-G	24781	Reducer	4-1/2"	4"
JJ-0408-0408-0	GJ-0408-0408-4	JJ-0408-0408-G	16408	Basic	4-1/2"	4-1/2"
JJ-0508-0408-0	GJ-0508-0408-4	JJ-0508-0408-G	24785	Reducer	5-1/2"	4-1/2"
JJ-0508-0500-0	GJ-0508-0500-4	JJ-0508-0500-G	24783	Reducer	5-1/2"	5"
JJ-0508-0508-0	GJ-0508-0508-4	JJ-0508-0508-G	16407	Basic	5-1/2"	5-1/2"
JJ-0700-0512-0	GJ-0700-0512-4	JJ-0700-0512-G	29254	Reducer	7"	5-3/4"
JJ-0700-0514-0	GJ-0700-0514-4	JJ-0700-0514-G	-	-	7"	5-7/8"
JJ-0700-0600-0	GJ-0700-0600-4	JJ-0700-0600-G	25474	Reducer	7"	6"
JJ-0700-0610-0	GJ-0700-0610-4	JJ-0700-0610-G	24748	Reducer	7"	6-5/8"
JJ-0700-0700-0	GJ-0700-0700-4	JJ-0700-0700-G	16407	Basic	7"	7"
JJ-0710-0610-0	GJ-0710-0640-4	JJ-0710-0610-G	25474	Reducer	7-5/8"	6-5/8"
JJ-0710-0610-0	GJ-0710-0640-4	JJ-0710-0610-G	25474	Reducer	7-5/8"	6-5/8"
JJ-0710-0700-0	GJ-0710-0700-4	JJ-0710-0700-G	26750	Reducer	7-5/8"	7"
JJ-0710-0710-0	GJ-0710-0710-4	JJ-0710-0710-G	16407	Basic	7-5/8"	7-5/8"
JJ-0710-0712-0	GJ-0710-0712-4	JJ-0710-0712-G	32477	Oversize	7-5/8"	7-3/4"
JJ-0910-0810-0	GJ-0910-0810-4	JJ-0910-0810-G	25474	Reducer	9-5/8"	8-5/8"
JJ-0910-0812-0	GJ-0910-0812-4	JJ-0910-0812-G	34029	Reducer	9-5/8"	8-3/4"
JJ-0910-0910-0	GJ-0910-0910-4	JJ-0910-0910-G	15660	Basic	9-5/8"	9-5/8"
JJ-0910-0912-0	GJ-0910-0912-4	JJ-0910-0912-G	-	Oversize	9-5/8"	9-3/4"
JJ-0910-0914-0	GJ-0910-0914-4	JJ-0910-0914-G	32477	-	9-5/8"	9-7/8"
JJ-1112-1012-0	GJ-1112-1012-4	JJ-1112-1012-G	-	Reducer	11-3/4"	10-3/4"
JJ-1112-1014-0	GJ-1112-1014-4	JJ-1112-1014-G	-	Reducer	11-3/4"	10-7/8"
JJ-1112-1112-0	GJ-1112-1112-4	JJ-1112-1112-G	15660	Basic	11-3/4"	11-3/4"
JJ-1112-1114-0	GJ-1112-1114-4	JJ-1112-1114-G	32477	Oversize	11-3/4"	11-7/8"
JJ-1400-1214-0	GJ-1400-1214-0	JJ-1400-1214-G	33249	Reducer	14"	12-7/8"
JJ-1400-1300-0	GJ-1400-1300-0	JJ-1400-1300-G	25474	Reducer	14"	13"
JJ-1400-1302-0	GJ-1400-1302-0	JJ-1400-1302-G	-	Reducer	14"	13-1/8"

JJ-1400-1304-0	GJ-1400-1304-0	JJ-1400-1304-G		Reducer	14"	13-1/4"
JJ-1400-1306-0	GJ-1400-1306-0	JJ-1400-1306-G	32700	Reducer	14"	13-3/8"
JJ-1400-1308-0	GJ-1400-1308-0	JJ-1400-1308-G		Reducer	14"	13-1/2"
JJ-1400-1310-0	GJ-1400-1310-0	JJ-1400-1310-G	39287	Reducer	14"	13-5/8"
JJ-1400-1312-0	GJ-1400-1312-0	JJ-1400-1312-G	39286	Reducer	14"	13-3/4"
JJ-1400-1314-0	GJ-1400-1314-0	JJ-1400-1314-G		Reducer	14"	13-7/8"
JJ-1400-1400-0	GJ-1400-1400-0	JJ-1400-1400-G	15660	Basic	14"	14"
JJ-2000-1810-0	GJ-2000-1810-0	JJ-2000-1810-G		Reducer	20"	18-5/8"

## Quantities Required for BJ® Casing Elevators

Quantities Required for BJ® Casing Elevators (75-Ton to 350-Ton)

BJ® Tool Size	BJ® Tool Size	BJ® Tool Size	BJ® Tool Size	BJ® Tool Size	BJ® Tool Size
3-1/2"	2-7/8"			18	
3-1/2"	3-1/2"		24	18	
4-1/2"	3-1/2" to 4-1/2"	16	24	27	
5-1/2"	4-1/2" to 5-1/2"	16	36	27	36
7"	6" to 7"	24	48		48
7-5/8"	6-5/8" to 7-3/4"			45	60
7-5/8"	7" to 7-5/8"		48	45	60
9-5/8"	8-5/8" to 9-3/4"				72
11-3/4"	10-3/4" to 11-3/4"				72

# Inserts for Cavins® Handling Tools

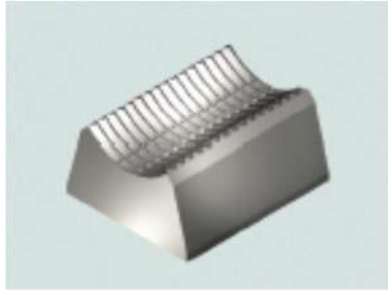
GRITFACE®, Fine Pyramid Tooth and Bi-Directional Inserts also available.

Standard Tooth Number	Fine Pyramid Tooth Number	Bi-Directional Tooth Number	GRITFACE® Number	OEM Reference Number	Description
CC-0308-0206-0	CC-0308-0206-FP	CC-0308-0206-G	GCC-0308-0206-4	TC-651-3-1/2 X 2-3/8	3-1/2" x 2-3/8"
CC-0308-0214-0	CC-0308-0214-FP	CC-0308-0214-G	GCC-0308-0214-4	TC-651-3-1/2 X 2-7/8	3-1/2" x 2-7/8"
CC-0308-0308-0	CC-0308-0308-FP	CC-0308-0308-G	GCC-0308-0308-4	TC-650-3-1/2	3-1/2" x 3-1/2"
CC-0408-0308-0	CC-0408-0308-FP	CC-0408-0308-G	GCC-0408-0308-4	TC-651-4-1/2 X 3-1/2	4-1/2" x 3-1/2"
CC-0408-0400-0	CC-0408-0404-FP	CC-0408-0404-G	GCC-0408-0400-4	TC-651-4-1/2 X 4	4-1/2" x 4"
CC-0408-0408-0	CC-0408-0408-FP	CC-0408-0408-G	GCC-0408-0408-4	TC-651-4-1/2	4-1/2" x 4-1/2"
CF-0308-0206-0	CF-0308-0206-FP	CF-0308-0206-G	GCF-0308-0206-4	TF-651-3-1/2 X 2-3/8	3-1/2" x 2-3/8"
CF-0308-0214-0	CF-0308-0214-FP	CF-0308-0214-G	GCF-0308-0214-4	TF-651-3-1/2 X 2-7/8	3-1/2" x 2-7/8"
CF-0308-0308-0	CF-0308-0308-FP	CF-0308-0308-G	GCF-0308-0308-4	TF-650-3-1/2	3-1/2" x 3-1/2"
CF-0508-0400-0	CF-0508-0400-FP	CF-0508-0400-G	GCF-0508-0400-4	TF-651-5-1/2 X 4	5-1/2" x 4"
CF-0508-0408-0	CF-0508-0408-FP	CF-0508-0408-G	GCF-0508-0408-4	TF-651-5-1/2 X 4-1/2	5-1/2" x 4-1/2"
CF-0508-0500-0	CF-0508-0500-FP	CF-0508-0500-G	GCF-0508-0500-4	TF-651-5-1/2 X 5	5-1/2" x 5"
CF-0508-0508-0	CF-0508-0508-FP	CF-0508-0508-G	GCF-0508-0508-4	TF-651-5-1/2	5-1/2" x 5-1/2"
CF-0710-0514-0	CF-0710-0514-FP	CF-0710-0514-G	GCF-0710-0514-4	-	7-5/8" x 5-7/8"
CF-0710-0610-0	CF-0710-0610-FP	CF-0710-0610-G	GCF-0710-0610-4	TF-651-7-5/8X 6-5/8	7-5/8" x 6-5/8"
CF-0710-0700-0	CF-0710-0700-FP	CF-0710-0700-G	GCF-0710-0700-4	TF-651-7-5/8 X 7	7-5/8" x 7"
CF-0710-0710-0	CF-0710-0710-FP	CF-0710-0710-G	GCF-0710-0710-4	TF-650-7-5/8	7-5/8" x 7-5/8"

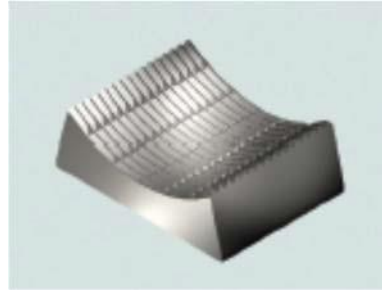
# Inserts for Guiberson F-1/H-1 Bowl and Slip

Standard Tooth Number	GRITFACE® Number	OEM Reference Number	Description	Tool Size	Pipe Size	Quantity
BB-0214-0206-0	GB-0214-0206-4	42586	Reducer	2-7/8"	2-3/8"	18/12
BB-0214-0214-0	GB-0214-0214-4	42587	Basic	2-7/8"	2-7/8"	18/12

## Inserts for Hydra Rig Bowl and Slip



Hydra Rig 150 Bowl & Slip Insert



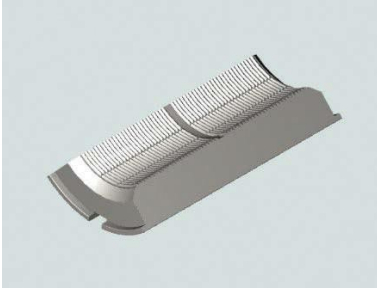
Hydra Rig 225 Bowl & Slip Insert

## Inserts for Hydra Rig 150 Bowl and Slip

Standard Tooth Number	GRITFACE® Number	OEM Reference Number	Description	Quantity
HH-0214-0100-0	GH-0214-0100-4	6006	2-7/8" x 1" (1.315")	8
HH-0214-0104-0	GH-0214-0104-4	6005	2-7/8" x 1-1/4" (1.66")	8
HH-0214-0108-0	GH-0214-0108-4	6004	2-7/8" x 1-1/2" (1.900")	8
HH-0214-0200-0	GH-0214-0200-4	-	2-7/8" x 2"	8
HH-0214-0201-0	GH-0214-0201-4	6003	2-7/8" x 2-1/16"	8
HH-0214-0206-0	GH-0214-0206-4	6002	2-7/8" x 2-3/8"	8
HH-0214-0214-0	GH-0214-0214-4	6001	2-7/8" x 2-7/8"	8
HH-0214-0302-0	GH-0214-0302-4	-	2-7/8" x 3-1/8"	8
HH-0214-0308-0	GH-0214-0308-4	6009	2-7/8" - 3-1/2"	8

## Inserts for Hydra Rig 225 Bowl and Slip

Standard Tooth Number	GRITFACE® Number	OEM Reference Number	Description	Quantity
HH-0508-0206-0	GH-0508-0206-4	6157	5-1/2" x 2-3/8"	12
HH-0508-0214-0	GH-0508-0214-4	6156	5-1/2" x 2-7/8"	12
HH-0508-0302-0	GH-0508-0302-4	-	5-1/2" x 3-1/8"	12
HH-0508-0308-0	GH-0508-0308-4	6155	5-1/2" x 3-1/2"	12
HH-0508-0400-0	GH-0508-0400-4	6154	5-1/2" x 4"	12
HH-0508-0408-0	GH-0508-0408-4	6153	5-1/2" x 4-1/2"	12
HH-0508-0412-0	GH-0508-0412-4	-	5-1/2" x 4-3/4"	12
HH-0508-0500-0	GH-0505-0500-4	6152	5-1/2" x 5"	12
HH-0508-0508-0	GH-0508-0508-4	6151	5-1/2" x 5-1/2"	12

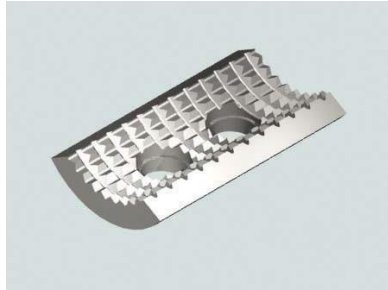


Hydra Rig 300 Bowl & Slip Insert

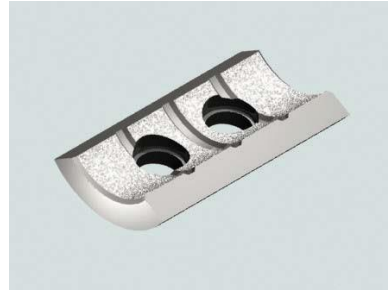
## Inserts for Hydra Rig 300 Bowl and Slip

Standard Tooth Number	GRITFACE® Number	OEM Reference Number	Description	Quantity
HH-0710-0214-0	GH-0710-0214-4	6181	7-5/8" x 2-7/8"	4
HH-0710-0308-0	GH-0710-0308-4	6182	7-5/8" x 3-1/2"	4
HH-0710-0400-0	GH-0710-0400-4	6179	7-5/8" x 4"	4
HH-0710-0408-0	GH-0710-0408-4	6178	7-5/8" x 4-1/2"	4
HH-0710-0500-0	GH-0710-0500-4	6180	7-5/8" x 5"	4
HH-0710-0508-0	GH-0710-0508-4	6176	7-5/8" x 5-1/2"	4
HH-0710-0512-0	GH-0710-0512-4	6177	7-5/8" x 5-3/4"	4
HH-0710-0600-0	GH-0710-0600-4	6175	7-5/8" x 6"	4
HH-0710-0608-0	GH-0710-0608-4	-	7-5/8" x 6-1/2"	4
HH-0710-0610-0	GH-0710-0610-4	6174	7-5/8" x 6-5/8"	4
HH-0710-0700-0	GH-0710-0700-4	6172	7-5/8" x 7"	4
HH-0710-0710-0	GH-0710-0710-4	6171	7-5/8" x 7-5/8"	4

## Inserts for Kelco™ Handling Tools



Kelco™ K-25 Standard Tooth Insert



Kelco™ K-25 GRITFACE® Insert Use with corrosion resistant alloy (CRA) tubulars

## Inserts for Kelco™ K-20 Style Tool

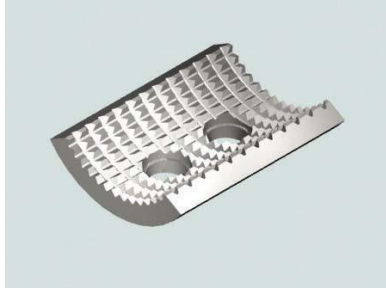
Standard Tooth Number	GRITFACE® Number	OEM Reference Number	Description	Quantity
KK-0200-0100-0	GK-0200-0100-5	04-120	1" (1.315")	3
KK-0200-0104-0	GK-0200-0104-5	04-121	1-1/4" (1.660")	3
KK-0200-0108-0	GK-0200-0108-5	04-122	1-1/2" (1.900")	3
KK-0200-0201-0	GK-0200-0201-5	04-123	2-1/16"	3
KK-0200-0204-0	GK-0200-0204-5	-	1-1/4" (1.660")	3
KK-0200-0206-0	GK-0200-0206-5	04-124	2-3/8"	3

Delete the word insert

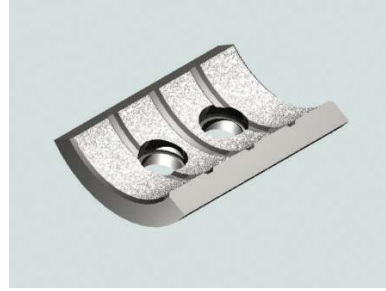
## Inserts for Kelco™ K-25 Style Tool

Standard Tooth Number	GRITFACE® Number	OEM Reference Number	Description	Quantity
KK-0250-0100-0	GK-0250-0100-5	05-120	1" (1.315")	3
KK-0250-0104-0	GK-0250-0104-5	05-121	1-1/4" (1.660")	3
KK-0250-0108-0	GK-0250-0108-5	05-122	1-1/2" (1.900")	3
KK-0250-0109-0	GK-0250-0109-5	-	1-9/16"	3
KK-0250-0113-0	GK-0250-0113-5	-	1-13/16"	3
KK-0250-0201-0	GK-0250-0201-5	05-123	2-1/16"	3
KK-0250-0202-0	GK-0250-0202-5	-	2-1/8"	3
KK-0250-0204-0	GK-0250-0204-5	-	2-1/4"	3
KK-0250-0206-0	GK-0250-0206-5	05-124	2-3/8"	3
KK-0250-0208-0	GK-0250-0208-5	05-125	2-1/2"	3
KK-0250-0211-0	GK-0250-0211-5	-	2-11/16"	3
KK-0250-02.776-0	GK-0250-02.776-5	-	2.776"	3
KK-0250-0214-0	GK-0250-0214-5	05-128	2-7/8"	3





Kelco™ K-30 Standard Tooth Insert

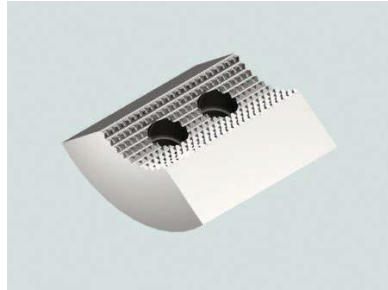


Kelco™ K-30 GRITFACE® Insert Use with corrosion resistant alloy (CRA) tubulars

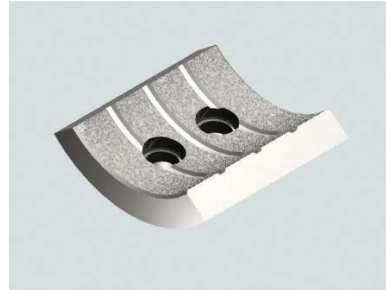
## Inserts for Kelco™ K-30 Style Tool

Standard Tooth Number	GRITFACE® Number	OEM Reference Number	Description	Quantity
KK-0300-0108-0	GK-0300-0108-5	06-134	1-1/2" (1.900")	3
KK-0300-0110-0	GK-0300-0110-5	-	1-5/8"	3
KK-0300-0111-0	GK-0300-0111-5	-	1-11/16"	3
KK-0300-0112-0	GK-0300-0112-5	-	1-3/4"	3
KK-0300-0113-0	GK-0300-0113-5	-	1-13/16"	3
KK-0300-0200-0	GK-0300-0200-5	-	2"	3
KK-0300-0201-0	GK-0300-0201-5	06-119	2-1/16"	3
KK-0300-0202-0	GK-0300-0202-5	-	2-1/8"	3
KK-0300-0204-0	GK-0300-0204-5	-	2-1/4"	3
KK-0300-0206-0	GK-0300-0206-5	06-120	2-3/8"	3
KK-0300-0208-0	GK-0300-0208-5	-	2-1/2"	3
KK-0300-0210-0	GK-0300-0210-5	-	2-5/8"	3
KK-0300-0212-0	GK-0300-0212-5	-	2-3/4"	3
KK-0300-0214-0	GK-0300-0214-5	06-121	2-7/8"	3
KK-0300-02718-0	GK-0300-02718-5	-	2.718"	3
KK-0300-02776-0	GK-0300-02776-5	-	2.776"	-
KK-0300-0300-0	GK-0300-0300-5	06-135	3"	3
KK-0300-0301-0	GK-0300-0301-5	06-122	3-1/16"	3
KK-0300-0302-0	GK-0300-0302-5	06-123	3-1/8"	3
KK-0300-0304-0	GK-0300-0304-5	06-124	3-1/4"	3
KK-0300-0306-0	GK-0300-0306-5	06-130	3-3/8"	3
KK-0300-0308-0	GK-0300-0308-5	06-125	3-1/2"	3
KK-0300-0310-0	GK-0300-0310-5	-	3-5/8"	3
KK-0300-0312-0	GK-0300-0312-5	06-127	3-3/4"	3
KK-0300-0314-0	GK-0300-0314-5	06-131	3-7/8"	3
KK-0300-03668-0	GK-0300-03668-5	06-126	3.668"	3
KK-0300-03730-0	GK-0300-03730-5	-	3.730"	3
KK-0300-03866-0	GK-0300-03866-5	-	3.866"	3
KK-0300-0400-0	GK-0300-0400-5	-	4"	3

Special Notes: 1-1/2" OD Pipe Size is the smallest we can manufacture 4" OD Pipe Size is the largest we can manufacture



Kelco™ K-50 Standard Tooth Insert

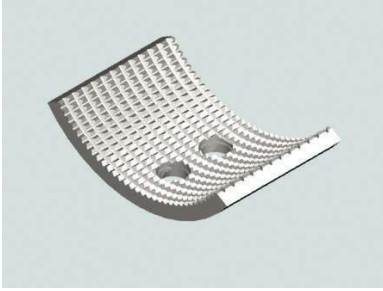


Kelco™ K-50 GRITFACE® Insert Use with corrosion resistant alloy (CRA) tubulars

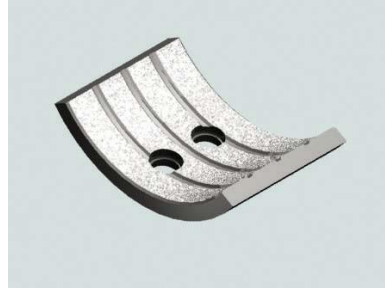
## Inserts for Kelco™ K-50 Style Tool

Standard Tooth Number	GRITFACE® Number	OEM Reference Number	Description	Quantity
KK-0500-0206-0	GK-0500-0206-5	-	2-3/8"	3
KK-0500-0210-0	GK-0500-0210-5	-	2-5/8"	3
KK-0500-0214-0	GK-0500-0214-0	06-575	2-7/8"	3
KK-0500-0304-0	GK-0400-0304-5	-	3-1/4"	3
KK-0500-0306-0	GK-0500-0306-5	-	3-3/8"	3
KK-0500-0308-0	GK-0500-0308-5	06-576	3-1/2"	3
KK-0500-0310-0	GK-0500-0310-5	06-577	3-5/8"	3
KK-0500-0312-0	GK-0500-0312-5	-	3-3/4"	3
KK-0500-0314-0	GK-0500-0314-5	-	3-7/8"	3
KK-0500-0400-0	GK-0500-0400-5	06-578	4"	3
KK-0500-0401-0	GK-0500-0401-5	-	4-1/16"	3
KK-0500-0402-0	GK-0500-0402-5	06-579	4-1/8"	3
KK-0500-0404-0	GK-0500-0404-5	-	4-1/4"	3
KK-0500-0406-0	GK-0500-0406-5	-	4-3/8"	3
KK-0500-0408-0	GK-0500-0408-5	06-580	4-1/2"	3
KK-0500-0412-0	GK-0500-0412-5	06-581	4-3/4"	3
KK-0500-0414-0	GK-0500-0414-5	-	4-7/8"	3
KK-0500-0500-0	GK-0500-0500-5	06-582	5"	3
KK-0500-0504-0	GK-0500-0504-5	-	5-1/4"	3
KK-0500-0506-0	GK-0500-0506-5	-	5-3/8"	3

Special Notes: 2-3/8" OD Pipe Size is the smallest we can manufacture



Kelco™ K-70 Standard Tooth Insert



Kelco™ K-70 GRITFACE® Insert Use with corrosion resistant alloy (CRA) tubulars

## Inserts for Kelco™ K-70 Style Tool

Standard Tooth Number	GRITFACE® Number	OEM Reference Number	Description	Quantity
KK-0700-0308-0	GK-0700-0308-5	06-758	3-1/2"	3
KK-0700-0312-0	GK-0700-0312-5	-	3-3/4"	3
KK-0700-0400-0	GK-0700-0400-5	-	4"	3
KK-0700-0408-0	GK-0700-0408-5	06-757	4-1/2"	3
KK-0700-0412-0	GK-0700-0412-5	06-755	4-3/4"	3
KK-0700-0413-0	GK-0700-0413-5	-	4-13/16"	3
KK-0700-0415-0	GK-0700-0415-5	-	4-15/16"	3
KK-0700-0500-0	GK-0700-0500-5	06-754	5"	3
KK-0700-0504-0	GK-0700-0504-5	-	5-1/4"	3
KK-0700-0508-0	GK-0700-0508-5	06-753	5-1/2"	3
KK-0700-0512-0	GK-0700-0512-5	06-759	5-3/4"	3
KK-0700-0514-0	GK-0700-0514-5	-	5-7/8"	3
KK-0700-0600-0	GK-0700-0600-5	06-752	6"	3
KK-0700-06050-0	GK-0700-06050-5	-	6.050"	3
KK-0700-0602-0	GK-0700-0602-5	-	6-1/8"	3
KK-0700-0604-0	GK-0700-0604-5	-	6-1/4"	3
KK-0700-0605-0	GK-0700-0605-5	-	6-5/16"	3
KK-0700-0608-0	GK-0700-0608-5	-	6-1/2"	3
KK-0700-0610-0	GK-0700-0610-5	06-751	6-5/8"	3
KK-0700-0614-0	GK-0700-0614-5	-	6-7/8"	3
KK-0700-0700-0	GK-0700-0700-5	06-750	7"	3

# Inserts for Oil Country Handling Tools

GRITFACE®, Fine Pyramid Tooth, and Bi-Directional Inserts also available.

Standard Tooth Number	Fine Pyramid Tooth Number	Bi-Directional Number	GRITFACE® Number	OEM Reference Number	Description
CE-0308-0206-0	CE-0308-0206-FP	CE-0308-0206-G	GCE-0308-0206-4	66651-1ST	3-1/2" x 2-3/8"
CE-0308-0214-0	CE-0308-0214-FP	CE-0308-0214-G	GCE-0308-0214-4	66651-2ST	3-1/2" x 2-7/8"
CE-0308-0308-0	CE-0308-0308-FP	CE-0308-0308-G	GCE-0308-0308-4	66651-3ST	3-1/2" x 3-1/2"
CE-0508-0400-0	CE-0508-0400-FP	CE-0508-0400-G	GCE-0508-0400-4	66653-1	5-1/2" x 4"
CE-0508-0408-0	CE-0508-0408-FP	CE-0508-0408-G	GCE-0508-0408-4	66653-2	5-1/2" x 4-1/2"
CE-0508-0500-0	CE-0508-0500-FP	CE-0508-0500-G	GCE-0508-0500-4	66653-3	5-1/2" x 5"
CE-0508-0508-0	CE-0508-0508-FP	CE-0508-0508-G	GCE-0508-0508-4	66653-4	5-1/2" X 5-1/2"
CE-0700-0508-0	CE-0700-0508-FP	CE-0700-0508-G	GCE-0700-0508-4	-	7" x 5-1/2"
CE-0700-0610-0	CE-0700-0610-FP	CE-0700-0610-G	GCE-0700-0610-4	66654-2ST	7" x 6-5/8"
CE-0700-0700-0	CE-0700-0700-FP	CE-0700-0700-G	GCE-0700-0700-4	66654-3ST	7" x 7"

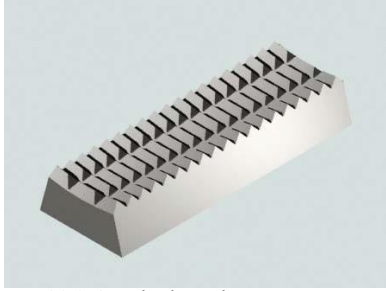
# Inserts for ST-80 Iron Roughneck Tools

Standard Tooth Number	OEM Reference Number	Description	Quantity
PDT-ST80	30160380-500	ST-80 Upper Insert	2
PDT-ST80 Kit	-	Includes 2 dies and replacement hardware	1
PDT-30160382	30160382	ST-80 Lower Insert	2
PDT-301603820-KIT	-	Includes 2 dies and replacement hardware	1
PDT-IDM-STANDARD	-	Die VARCO® Iron Derrick Man Power Gripper	2
PDT-81788	81788	Die VARCO® Pipe Handler Insert 3/4" x 3-1/16" x 5"	2

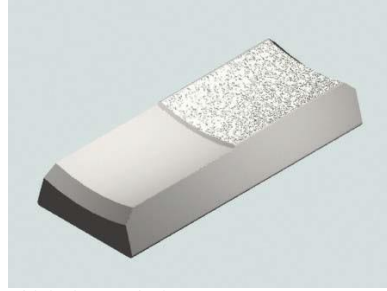
# Inserts for VARCO® Style Handling Tools

GRITFACE®, Fine Tooth and Beveled inserts also available.

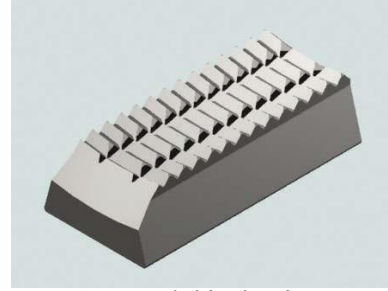
Standard Tooth Number	GRITFACE® Number	OEM Reference Number	Description	Tool Size	Pipe Size
AA-0308-0206-0	GA-0308-0206-4	2160	Reducer	3-1/2"	2-3/8"
AA-0308-0214-0	GA-0308-0214-4	2161	Reducer	3-1/2"	2-7/8"
AA-0308-0308-0	GA-0308-0308-4	2162	Basic	3-1/2"	3-1/2"
AA-0408-0308-0	GA-0408-0308-4	2163	Reducer	4-1/2"	3-1/2"
AA-0408-0400-0	GA-0408-0400-4	2164	Reducer	4-1/2"	4"
AA-0408-0408-0	GA-0408-0408-4	2165	Basic	4-1/2"	4-1/2"
AA-0500-0400-0	GA-0500-0400-4	2168	Reducer	5"	4"
AA-0500-0408-0	GA-0500-0408-4	2166	Reducer	5"	4-1/2"
AA-0500-0500-0	GA-0500-0500-4	2167	Basic	5"	5"
AA-0508-0408-0	GA-0508-0408-4	2168	Reducer	5-1/2"	4-1/2"
AA-0508-0500-0	GA-0508-0500-4	2169	Reducer	5-1/2"	5"
AA-0508-0508-0	GA-0508-0508-4	2170	Basic	5-1/2"	5-1/2"
AA-0700-0514-0	GA-0700-0514-4	-	Reducer	7"	5-7/8"
AA-0700-0600-0	GA-0700-0600-4	-	-	7"	6"
AA-0700-0610-0	GA-0700-0610-4	2172	Reducer	7"	6-5/8"
AA-0700-0700-0	GA-0700-0700-4	2173	Basic	7"	7"
AA-0710-0610-0	GA-0710-0610-4	2632	Reducer	7-5/8"	6-5/8"
AA-0710-0700-0	GA-0710-0700-4	2623	Reducer	7-5/8"	7"
AA-0710-0702-0	GA-0710-0702-4	-	Reducer	7-5/8"	7-1/8"
AA-0710-0710-0	GA-0710-0710-4	2633	Basic	7-5/8"	7-5/8"
AA-0710-0712-0	GA-0710-0712-4	-	Oversize	7-5/8"	7-3/4"
AA-0910-0810-0	GA-0910-0810-4	2640	Reducer	9-5/8"	8-5/8"
AA-0910-0812-0	GA-0910-0812-4	2650	Reducer	9-5/8"	8-3/4"
AA-0910-0906-0	GA-0910-0906-4	-	Reducer	9-5/8"	9-3/8"
AA-0910-0910-0	GA-0910-0910-4	2633	Basic	9-5/8"	9-5/8"
AA-0910-0912-0	GA-0910-0912-4	2649	Oversize	9-5/8"	9-3/4"
AA-0910-0914-0	GA-0910-0914-4	2649	Oversize	9-5/8"	9-7/8"
AA-1112-1012-0	GA-1112-1012-4	2640	Reducer	11-3/4"	10-3/4"
AA-1112-1112-0	GA-1112-1112-4	2637	Basic	11-3/4"	11-3/4"
AA-1112-1114-0	GA-1112-1114-4	2651	Oversize	11-3/4"	11-7/8"
AA-1112-1012-0	GA-1112-1012-4	2640	Reducer	11-3/4"	10-3/4"
AA-1112-1112-0	GA-1112-1112-4	2637	Basic	11-3/4"	11-3/4"
AA-1112-1114-0	GA-1112-1114-4	2651	Oversize	11-3/4"	11-7/8"
AA-1400-1212-0	GA-1400-1212-4	2657	Reducer	14"	12-3/4"
AA-1400-1214-0	GA-1400-1214-4	2656	Reducer	14"	12-7/8"
AA-1400-1306-0	GA-1400-1306-4	2636	Reducer	14"	13-3/8"
AA-1400-1308-0	GA-1400-1308-4	2652	Reducer	14"	13-1/2"
AA-1400-1310-0	GA-1400-1310-4	2653	Reducer	14"	13-5/8"
AA-1400-1312-0	GA-1400-1312-4	2655	Reducer	14"	13-3/4"
AA-1400-1400-0	GA-1400-1400-4	2635	Basic	14"	14"
AA-2000-1810-0	GA-2000-1810-4	-	Reducer	20"	18-5/8"
AA-2000-2000-0	GA-2000-2000-4	2635	Basic	20"	20"



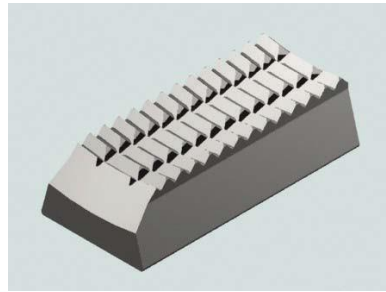
VARCO® Standard Tooth Tong Die



VARCO® GRITFACE® Tong Die  
Use with corrosion resistant alloy (CRA) tubulars



VARCO® Beveled (Reducer) Insert



VARCO® Beveled Standard Tooth Insert



VARCO® Beveled GRITFACE® Insert  
Use with corrosion resistant alloy (CRA) tubulars

### Quantities Required for Varco® Rotary Slips

Varco® Tool Size	SDS	SDHL	SDML	SDM	SDXL	SDL
3-1/2"	24		30	30		36
4-1/2"	36		45	45	54	54
5"			45	45	54	54
5-1/2"		45	45	45	54	54
7"					72	60

### Quantities Required for Varco® Casing Elevators

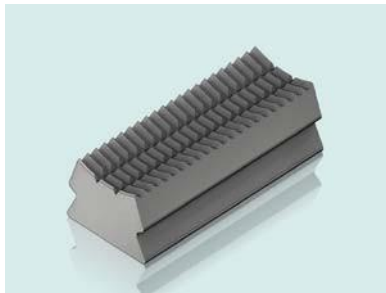
Varco® Tool Size	Pipe Size	200-Ton 7-5/8"	350-Ton 14"	500-Ton 14"	750-Ton 14"	1000-Ton 24"	500-Ton 24"	750-Ton 24"
3-1/2"	2-3/8"	12/12B						
3-1/2"	2-7/8"	12/12B						
3-1/2"	3-1/2"	24B						
4-1/2"	3-1/2"	16/16B						
4-1/2"	4"	16/16B						
4-1/2"	4-1/2"	32						
5-1/2"	4-1/2"	16/16B	24/16B	32/16B				
5-1/2"	5"	16/16B	24/16B	32/16B				
5-1/2"	5-1/2"	32	40	48				
7"	7"	48	60	72				
7-5/8"	6-5/8"	24/24B	36/24B	48/24B	60/24B			
7-5/8"	7"	24/24B	36/24B	48/24B	60/24B			
7-5/8"	7-1/8"	24/24B	36/24B	48/24B	60/24B			
7-5/8"	7-5/8"	48	60	72	84			
7-5/8"	7-3/4"	48	60	72	84			
9-5/8"	8-5/8"		48/32B	64/32B	80/32B	96/24B		
9-5/8"	8-3/4"		48/32B	64/32B	80/32B	96/24B		
9-5/8"	9-5/8"		80	96	112	120		
9-5/8"	9-3/4"		80	96	112	120		
9-5/8"	9-7/8"		80	96	112	120		
11-3/4"	10-3/4"		60/40B	80/40B	100/40B	144/36B		
11-3/4"	11-3/4"		100	120	140	180		

11-3/4"	11-7/8"		100	120	140	180		
14"	13-1/2"		60/40B	80/40B	100/40B	192/48B		
14"	13-5/8"		60/40B	80/40B	100/40B	192/48B		
14"	13-3/8"		60/40B	80/40B	100/40B	192/48B		
14"	13-3/4"		60/40B	80/40B	100/40B	192/48B		
14"	14"		100	120	140	240		
20"	18-5/8"					720	420	510
20"	20"			180	210	300	180	210

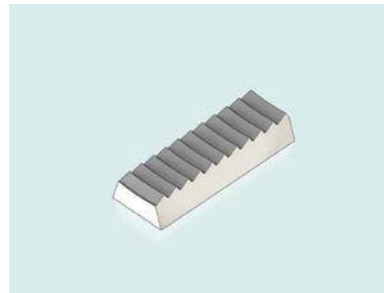
### Quantities Required for Varco® Power Slips

Varco® Tool Size	Pipe Size	PS-15	PS-16
4-1/2"	3-1/2"	32/16B	32/16B
4-1/2"	4"	32/16B	32/16B
4-1/2"	4-1/2"	48	48
5-1/2"	4-1/2"	32/16B	32/16B
5-1/2"	5"	32/16B	32/16B
5-1/2"	5-1/2"	48	48
7-5/8"	6-5/8"	48/24B	48/24B

## Inserts for Woolley®



WOOLLEY B Insert



WOOLLEY A Insert

Standard Tooth Number	GRITFACE® Number	OEM Reference Number	Description	Quantity
WW-0408-0206-FF	GW-0408-0206-4	757-044-0123	(WOOLLEY B) 4-1/2" x 2-3/8"	24
WW-0408-0214-FF	GW-0408-0214-4	757-044-0127	(WOOLLEY B) 4-1/2" x 2-7/8"	24
WW-0408-0308-FF	GW-0408-0308-4	757-044-0134	(WOOLLEY B) 4-1/2" x 3-1/2"	24
WW-0408-0400-FF	GW-0408-0400-4	757-044-0140	(WOOLLEY B) 4-1/2" x 4"	24
WW-0408-0408-FF	GW-0408-0408-4	757-044-0144	(WOOLLEY B) 4-1/2" x 4-1/2"	24
WW-0508-0700-0	-	797-000-0000	(WOOLLEY A) 5-1/2" x 7"	24

## "C" Safety Clamps

Standard Tooth Number	GRITFACE® Number	OEM Reference Number
SS-0312-3100-0	TS-0312-3100-1	7624-A-4

Can be used in the following pipe sizes:

Pipe Outer Dimension Size	# Safety Clamps Required
3-3/4" to 4-5/8"	7
4-1/2" to 5-5/8"	8
5-1/2" to 6-5/8"	9
6-1/2" to 7-5/8"	10
7-1/2" to 8-5/8"	11
8-1/2" to 9-5/8"	12
9-1/2" to 10-5/8"	13
10-1/2" to 11-5/8"	14
11-1/2" to 12-5/8"	15
12-1/2" to 13-5/8"	16
13-1/2" to 14-5/8"	17
14-1/2" to 15-5/8"	18
15-1/2" to 17"	18
16-1/2" to 18"	19
17-1/2" to 19"	20
18-1/2" to 20"	21
19-1/2" to 21"	22



## "MP, MPR" Safety Clamps

Standard Tooth Number	GRITFACE® Number	OEM Reference Number
SS-0408-3000-0	TS-0408-3000-1	3310

Can be used in the following pipe sizes:

Pipe Outer Dimension Size	# Safety Clamps Required
4-1/2" to 5-5/8"	8
5-1/2" to 7"	9
6-3/4" to 8-1/4"	10
8" to 9-1/4"	11
9-1/4" to 10-1/2"	12
10-1/2" to 11-1/2"	13
11-1/2" to 12-1/2"	14
12-1/2" to 13-5/8"	15
13-5/8" to 14-3/4"	16
14-3/4" to 15-7/8"	17
15-7/8" to 17"	18
17" to 18-1/2"	19
18-1/8" to 19-3/8"	20
19-3/8" to 20-3/8"	20
20-3/8" to 21-1/2"	21
21" to 22-5/8"	22
22-5/8" to 23-3/4"	23
23-3/4" to 24-7/8"	24
24-7/8" to 26"	25
26" to 27-1/8"	26
29-3/8" to 30-1/2"	29

## "MPS" Safety Clamps

Standard Tooth Number	GRITFACE® Number	OEM Reference Number
SS-0214-0500-0	TS-0214-0500-1	3333

Can be used in the following pipe sizes:

Pipe Outer Dimension Size	# Safety Clamps Required
2-7/8" to 4-1/8"	8
4" to 5"	9

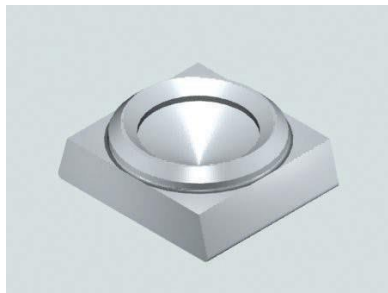
## "T" Safety Clamps

Standard Tooth Number	GRITFACE® Number	OEM Reference Number
SS-0101-0408-0	TS-0101-0408-1	7624-A-21

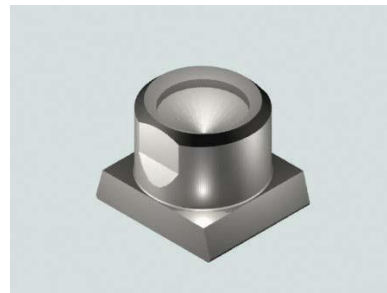
Can be used in the following pipe sizes:

Pipe Outer Dimension Size	# Safety Clamps Required
1-1/8" to 2"	4
2-1/8" to 3-1/4"	5
3-1/2" to 4-1/2"	6

# Circular Buttons for VARCO® Handling Tools



Circular Button for VARCO® Tool



Circular Button (Reducer) for VARCO® Tool

McCoy Part Number	OEM Reference Number	Description
PDT2513	2513	5-1/2" x 7" Circular Button for DCS-LD/C slip
PDT2619	2619	7" Circular Button for VARCO® Casing Slip CMS-XL
PDT2620	2620	4" to 4-1/2" & 5-1/2" to 7" Button for VARCO® Drill Collar Slips
PDT2625	2625	11" x 12-3/4" Circular Button for VARCO® Drill Collar Slips
PDT2626	2626	18-5/8" Circular Button for VARCO® Casing Slip CMS-XL
PDT2627	2627	8-1/2" to 10" Button for VARCO® Drill Collar Slips
PDT2628	2628	3" to 4" & 4-1/2" to 6" Button for VARCO® Drill Collar Slips
PDT2630	2630	6-3/4" to 9-1/2" & 8" to 9-1/2" & 12" to 14" Button for VARCO® Drill Collar Slips
PDT2631	2631	16", 20", 24", 26" Button for VARCO® Casing Slip CMS-XL
PDT13868	13868	22" & 28" Button for VARCO® Casing Slip CMS-XL

## Quantities Required for Varco® Drill Collar Slips (DCS)

Tool Size	PDT2513	PDT2620	PDT2625	PDT2626	PDT2627	PDT2628	PDT2630
3" to 4" DCS-S						49	
4" to 4-7/8" DCS-S		49					
4-1/2" to 6" DCS-R						63	
5-1/2" to 7" DCS-R		63					
5-1/2" to 7" DCS-L	88						
6-3/4" to 8-1/4" DCS-L							88
8" to 9-1/2" DCS-L							96
8-1/2" to 10" DCS-L					104		
9-1/4" to 11-1/4" DCS-L							112
11" to 12-3/4" DCS-L			136				
12" to 14" DCS-L							136

## Quantities Required for Varco® Casing Slips (CMS-XL)

Tool Size	PDT2619	PDT2626	PDT2627	PDT2628	PDT2630	PDT2631	PDT13868
6-5/8"				144			
7"	144						
7-5/8"					144		
8-5/8"					156		
9-5/8"					168		
10-3/4"					180		
11-3/4"			204				
13-3/8"					216		

16"						252	
18-5/8"		300					
20"						312	
22"							360
24"						360	
26"						396	
28"							432
30"						444	

### Quantities Required for Varco® Casing Slips (CMS-XL)

GRITFACE® Non-Marking Buttons (For CMS-XL Only)

Tool Size	G-2619-4	G-2626-4	G-2627-4	G-2628-4	G-2630-4	G-2631-4
6-5/8"				72		
7"	72					
7-5/8"					72	
8-5/8"					78	
9-5/8"					84	
10-3/4"					90	
11-3/4"			102			
13-3/8"					108	
16"						126
18-5/8"		150				
20"						156
24"						180
26"						198
30"						222