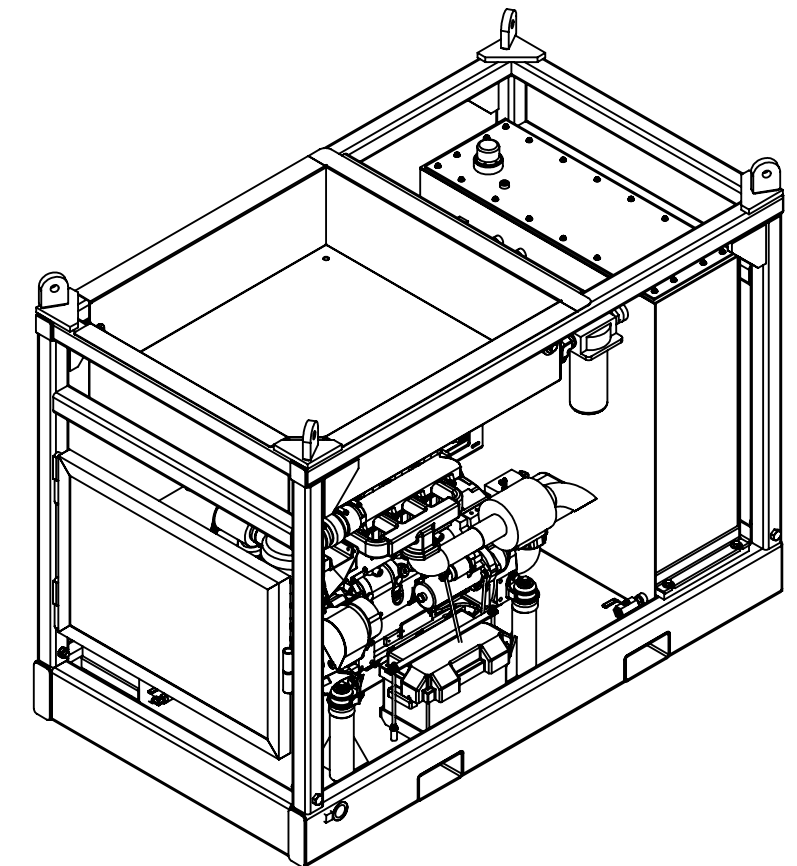
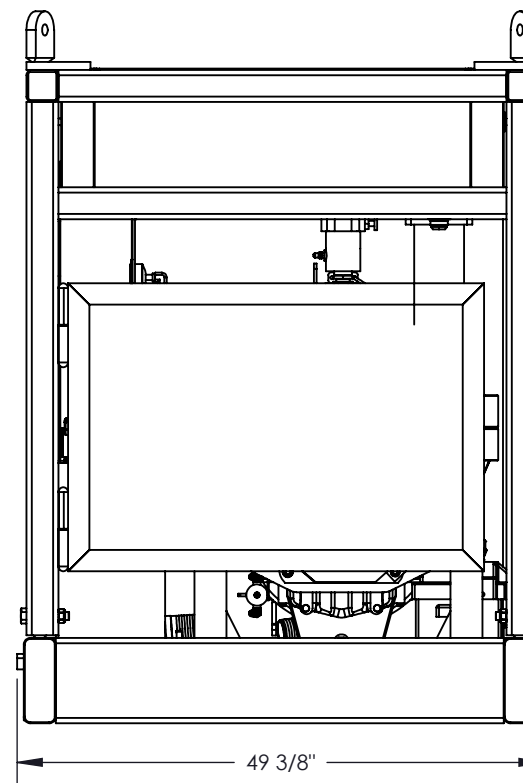
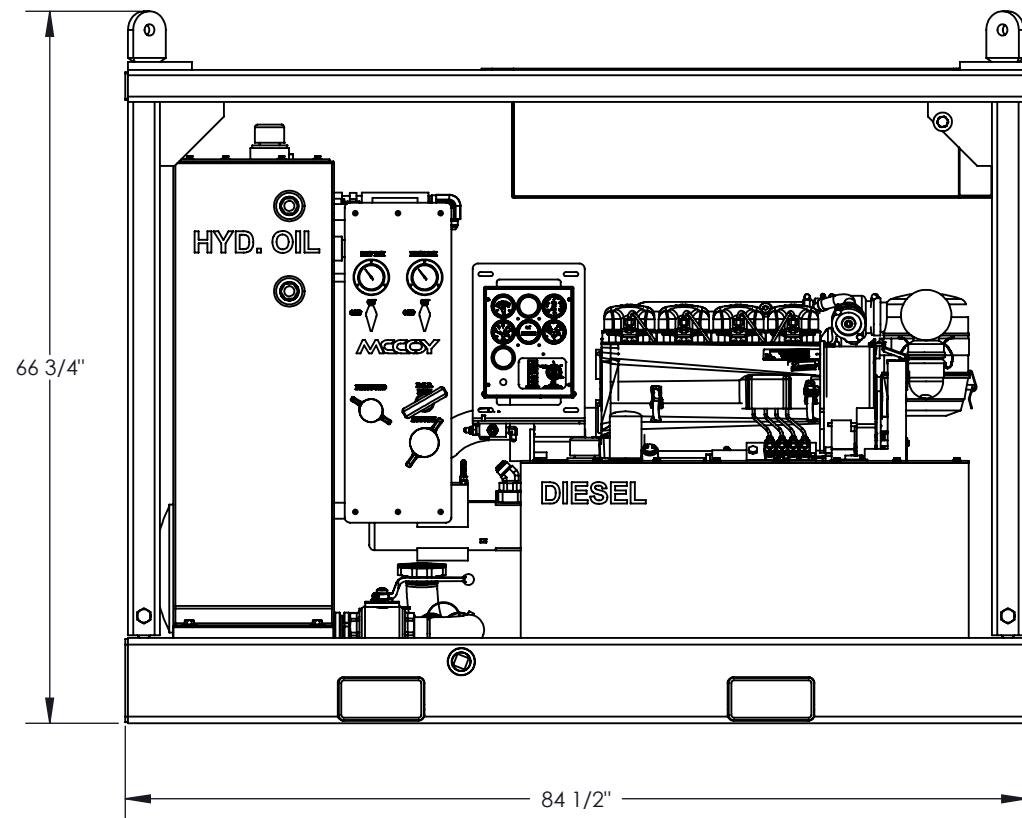
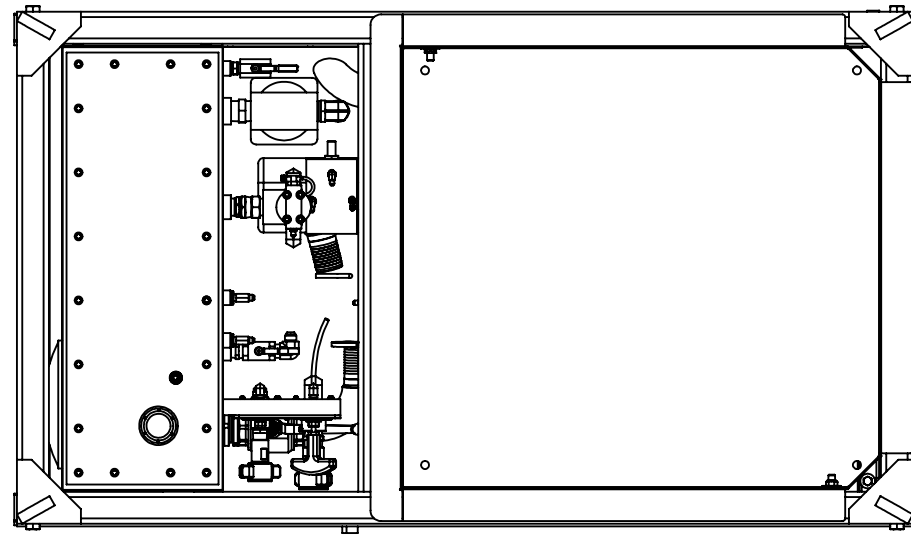


DPU440-06 SPECIFICATIONS

MAXIMUM OPERATING PRESSURE	3000 PSI / 207 BAR
MAXIMUM DIESEL ENGINE OUTPUT	75 HP
MAXIMUM HYDRAULIC FLOW	40 GPM / 227 LPM
HYDRAULIC RESERVOIR CAPACITY	130 GALLON / 492 L
FUEL TANK CAPACITY	35 GALLON / 132 L
STARTER TYPE	ELECTRIC START
OIL REQUIREMENT	AW-68
SPECAIL FEATURES	PARTIAL GATE PACKAGE
	2 STAGE GEAR PUMP



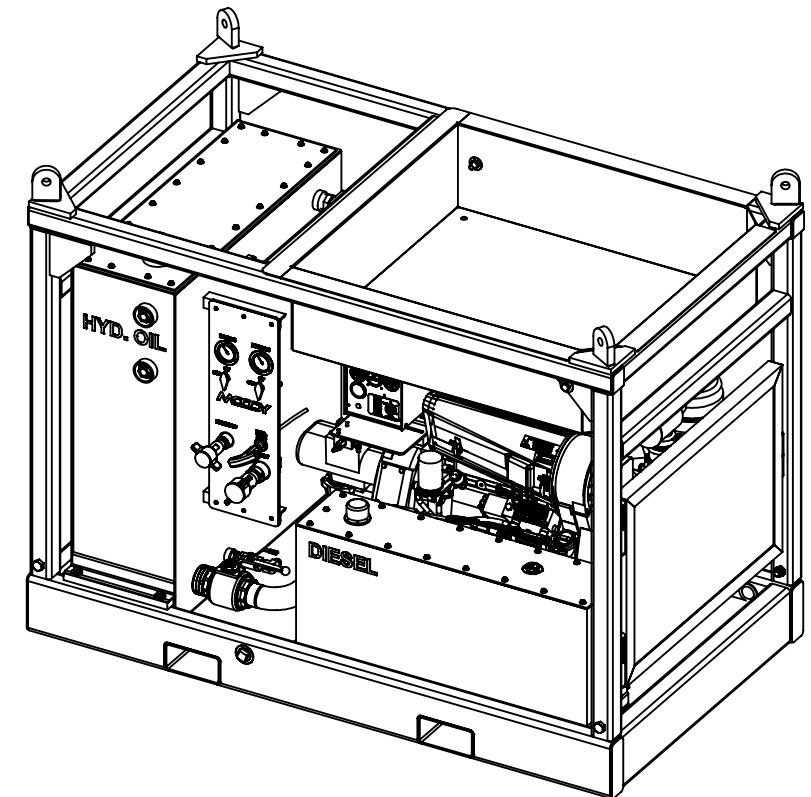
REVISIONS

REVISION	ECN NUMBER	ECN DESCRIPTION	ECN COMPLETED BY	ECN COMPLETED DATE
A	N/A	INITIAL RELEASE	N/A	N/A
B	16-0250	Revised bom: removed (1) 7042HL-005-S5B-EL3; added (1) 7042HL-005-S5B-EL	R.HENRY	12/1/2016
C	17-0101	ADD GA SHEET AND SPECIFICATIONS; REPLACE (1) 1666 W/ (1) 1670; 1446 W/ 1445; 1441 W/ 1440; ADD (2) ASR115-6-5; REPLACE 7040HL-011-01 W/ (1) 7040HL-011-04	M.BUDDEN	4/28/2017

UNLESS OTHERWISE SPECIFIED:		PROPRIETARY STATEMENT		DESCRIPTION	
1. DIMENSIONS ARE IN INCHES		THIS DOCUMENT IS THE PROPERTY OF MCCOY CORPORATION AND IS CONSIDERED CONFIDENTIAL. THIS INFORMATION MAY NOT BE USED, DISCLOSED, COPIED, OR REPRODUCED IN ANY FORM, WITHOUT THE EXPRESS WRITTEN CONSENT OF MCCOY CORPORATION.		ASSEMBLY, POWER UNIT, DIESEL, 4 CYLINDER, ELECTRIC START, PARTIAL GATE	
2. TOLERANCES: ANGULAR ± 1° FRACTIONAL ± 1/16 TWO PLACE DECIMAL ± 0.02 THREE PLACE DECIMAL ± 0.005		DRAWN R.CENAC		SIZE PART NO. DPU440-06	
3. IDENTIFY P/N & MAIL P.O. USING 1/8 TO 1/4 ETCHED LETTERS; DENOTED BY "X"		CHECKED J.KELLY		REV C	
4. REMOVE BURRS & SHARP EDGES WITH 1/64x45° MAX		APPROVED J.KELLY		MATERIAL N/A	
5. MACHINED FILET RADII SHALL BE 1/32		THIRD ANGLE PROJECTION		WEIGHT 3213 LBS.	
6. FINAL SURFACE ROUGHNESS AVG. (Ra) SHALL BE ≤ 250 MICRONS		WEIGHT 3213 LBS.		SHEET 1 OF 5	
7. DIMENSIONS IN PARENTHESES ARE CRITICAL DIMENSIONS; 100% INSPECTION REQUIRED		WEIGHT 3213 LBS.		SHEET 1 OF 5	
8. A TRIANGLE DENOTES A REVISION		WEIGHT 3213 LBS.		SHEET 1 OF 5	
9. INTERPRET DRAWING PER ASME Y14.5-2009		WEIGHT 3213 LBS.		SHEET 1 OF 5	

RELEASED FOR PRODUCTION

ITEM	QTY.	P/N	DESCRIPTION	ITEM	QTY.	P/N	DESCRIPTION
1	1	DSKD-12	WELDMNT, SKID, DIESEL POWER UNIT	46.11	2	H6-100-FJFJ	HOE, 3/8, 3000 PSI, TOUGH COVER, 100 LONG, FJIC X FJIC
2	1	GNSH15-15	PUMP, HYDRAULIC, HIGH/LOW	46.12	2	H6-60-FJFJ9	HOSE, 3/8, 3000 PSI, 60 LONG, FJIC 90 DEG
3	1	DPU660-S1	BLOCK, FILTER	46.12.1	1	H6-HYDHOSE	HYDRAULIC HOSE, 3/4
4	1	7042HL-005-S10-EL	PLATE, BULKHEAD, DPU	46.13	1	H12-72-FJFJ9	HOSE, 3/4, 3000 PSI, TOUGH COVER, 72 LONG, FJIC X FJIC 90 DEG
5	1	7042HL-005-S5B-EL	PLATE, NAME	47	1	DPU-104	CABLE, BATTERY, 35IN
6	1	2070	VALVE, RELIEF	48	1	KITFIT-DPU440-06	KIT, FITTING, DPU, 4 CYL
7	2	D40H-75-300-SL	CLAMP, T-BOLT 2 1/2	48.1	2	1391	FITTING, STREET ELBOW, LOW PRESSURE, 3/4
8	1	D914L04ES	ENGINE, DIESEL, 4 CYLINDER, ELECTRIC START, DEUTZ	48.2	1	PN24-33T	PIPE NIPPLE, 1 1/2 MNPT X 33, SCH 80
9	1	7040HL-011-04C	ASSEMBLY, THROTTLE CYLINDER, DIESEL ENGINE, 4 CYLINDER	48.3	1	PN20-33T	PIPE NIPPLE, 1 1/4 X 33 MNPT, SCH 80
10	1	DT-35G	WELDMNT, DIESEL TANK, 35 GA.	48.4	2	PN12-20T	FITTING, 3/4 MNPT X 20 LONG SCH. 80 PIPE NIPPLE
11	2	CM4556	VALVE, PARKER, 1/4 NPT	48.5	1	1393	FITTING, STREET ELBOW, LOW PRESSURE, 1 1/4 IN
12	1	1378	COUPLING, THREADED 1 3M	48.6	2	1478	VALVE, BALL, BRASS, 3/8 FNPT, 3/8 FNPT
13	1	1378-A	COUPLING, 1 1/4 NPT	48.7	1	PN40-C	PIPE NIPPLE, 2 1/2 X CLOSE, SCH. 80
14	2	BAC-3M25RCFF	GAUGE, 2 1/2, 3K, 1/4 MNPT	48.8	1	20-24CTXS	FITTING, ELBOW, 90 DEG., 1 1/2" MNPT X 1 1/4" MJIC
15	1	W43-16-16U	FLANGE KIT, 1 FNPT, CODE 61	48.9	2	1494	FITTING, BUSHING, REDUCER, 3/4 MNPT X 3/8 FNPT
16	1	HRES-130	ASSEMBLY, HYDRAULIC RESERVIOR, 130 GALLON	48.10	2	1527	FITTING, TEE, 3/8" MNPT X 3/8" MJIC X 3/8" MJIC
17	12	1102	WASHER, FLAT, 1/2, STEEL, GR08	48.11	1	1609-A	PLUG, FLUSH, 1/2
18	4	1103	LOCKWASHER, 1/2	48.12	1	24CD	FITTING, ELBOW, 1 1/2 NPT, STREET EL
19	4	1260	SCREW, HEX HEAD, 1/2-13 X 5 1/4, GR8	48.13	1	1504	FITTING, PIPE NIPPLE, HEX, 1 1/2"
20	1	DPU-100-S1	ELBOW, MUFFLER, 6 CYL ENGINE	48.14	1	20F6X	FITTING, SWIVEL, 1 1/4 MNPT, 1 1/4 FJIC
21	1	1014	U-BOLT, 1/4-20, 1 3/4 ID	48.15	1	1470	FITTING, 1 1/4, MNPT, 1 1/4, MJIC, STRAIGHT
22	2	100	NUT, HEX, 1/4-20, GR8	48.16	1	1669	FITTING, TEE, BRANCH, 1 MNPT, 1 FNPT
23	21	101	WASHER, LOCK, 1/4, GR8	48.17	2	1617	FITTING, 1 MNPT, 1 MJIC, ELBOW
24	1	DPU-102	BATTERY, RETAINER, COVER	48.18	1	1562	FITTING, 1/4 MNPT, 1/4 MJIC, STRAIGHT
25	2	DPU-101	ROD, ALL THREAD, 3/8"-16	48.19	1	1499	FITTING, REDUCER BUSHING, 1 1/4 X 1 NPT
26	8	1111	SCREW, HEX, 1/2-13, 1 1/4, STEEL, GR8, ZINC	48.20	1	4f5ox-s	FITTING, 1/4 MORB, 1/4 MJIC, STRAIGHT
27	1	F6L914-S1	PULL HANDLE, EMERGENCY	48.21	1	4R6X-S	FITTING, 1/4 FJIC SWIVEL, 1/4 MJIC, RUN TEE
28	1	HYDOIL	LETTER, CLEAR, ADHESIVE	48.22	2	4-6C5OX-S	FITTING, 3/8 MORB, 1/4 MJIC, ELBOW
29	1	DIESEL	LETTER, CLEAR, ADHESIVE	48.23	1	16VTX-S	FITTING, 1 MNPT, 1 MJIC, 45
30	6	SST-18	SCREW, BUTTON HEAD, 1/4-20 X 1, STAINLESS	48.24	2	1579	FITTING, 3/8 MNPT X 3/8 MNPT 90 DEG
31	6	1737	NUT, NYLOCK, 1/4-20 SS	48.25	2	1570	FITTING, 3/8 MNPT, 3/8 MJIC, STRAIGHT
32	1	DPU-105	BOX, BATTERY	48.26	1	1461	FITTING, 3/4 MNPT, 3/4 MNPT, HEX NIPPLE
33	4	1025	WASHER, FLAT, 3/8, STEEL, GR 8	48.27	1	V500P-12	VALVE, BALL, BRASS, 3/4" NPT, PARKER# V500P-12
34	4	1024	NUT, HEX, 3/8 - 16, STEEL, GR08	48.28	1	1610	FITTING, 3/4 MNPT, PLUG
35	4	1027	WASHER, LOCK, 3/8, STEEL	48.29	2	1462	FITTING, NIPPLE, HEX, 1"
36	19	1008-B2	WASHER, FLAT, 1/4, GR8	48.30	1	1440	FITTING, QUICK DISCONNECT, 1 FML-WING TYPE
37	19	104	SCREW, HEX, 1/4-20, 3/4	48.31	1	1666	FITTING, QUICK DISCONNECT, PLUG, DUST, FEMALE, 1 NIPPLE, HEX, 1 1/4"
38	2	SLP-1	SIGHT, LEVEL, PLUG - 1 NPT	48.32	1	1463	FITTING, QUICK DISCONNECT, WING TYPE 1 1/4 FEMALE
39	1	DBSKT-008	ASSEMBLY, HOSE BASKET	48.33	1	1445	FITTING, QUICK DISCONNECT, PLUG, DUST, FEMALE, 1 1/4
40	2	202	SCREW, HEX, 5/8-11, 2 1/2, STEEL, GR8	48.34	1	1670	FITTING, 1/4 MNPT, 3/8 MJIC, ELBOW
41	4	195A	FLAT WASHER	48.35	2	1576-A	FITTING, 1/4 MNPT, 1/4 MJIC, ELBOW
42	2	1156-A	NUT, NYLOCK, 5/8 - 11	48.36	2	1576	FITTING, 1/4 MNPT, 1/4 MJIC, ELBOW
43	1	DPU-104	CABLE, BATTERY, 35IN	48.37	1	1469	FITTING, 1 MNPT, 1 MJIC, STRAIGHT
44	1	DPU-106	BATTERY, 12V, 850 CCA	48.38	1	1559	FITTING, ADAPTER, STRAIGHT, 3/8 MJIC, 1/4 MNPT
45	1	KITHYD-DPU	ASSEMBLY, HYDRAULIC FITTINGS	48.39	1	V500P-16	VALVE, BALL, BRASS, 1" NPT, PARKER# V500P-16
45.1	1	SNS-25N-25S-11	ADAPTER, WELD, 2 1/2	48.40	1	2501-12-20	FITTING, 90 DEG. ELBOW, 1 1/4" MNPT X 3/4" MJIC
45.2	1	BVAL-2500S-4321	VALVE, BALL, 2 1/2" SAE	48.41	1	6-6CTX	FITTING, ELBOW, 90 DEG., 3/8" MJIC X 3/8" MNPT
45.3	1	40SFO	FLANGE, SPLIT, 2 1/2", CODE 61	48.42	2	1612-G	FITTING, PLUG, 1 1/2 NPT
45.4	1	BSE-25HB-25S-11	ADAPTER, 2 1/2, 2 1/2, 90	48.43	1	1636	CAP, JIC, 3/8
45.5	1	SBE-25HB-25SM-11	FITTING, 2 1/2 HOSE BARB X 2 1/2, CODE 61 FLANGE ADAPTER, 90 DEG	48.44	2	1653	FITTING, 1/4 FNPT, 1/4 MJIC, ELBOW
46	1	KITHOSE-DPU660-09	HOSE KIT, F/6-CYLINDER POWER UNIT	48.45	1	20CTX	FITTING, 1 1/4 MJIC, 1 1/4 MNPT, ELBOW
46.1	1	H20-45-FJFJS	HOSE, 1 1/4, 45 LONG, SINGLE WIRE, FJIC X FJIC	49	1	2STRAINER	STRAINER, SUCTION, 2 FNPT
46.2	1	H16-23-FJFJ	ASSEMBLY, HOSE, 1 FJIC X 23, PARKER 451TC TOUGH COVER	50	2	ASR115-6-5	FUEL HOSE, 3/8 X 5FT
46.3	1	H16-21-FJFJ	ASSEMBLY, HOSE, 1 FJIC X 21, PARKER 451TC TOUGH COVER				
46.4	1	H4-17-FJFJ	ASSEMBLY, HOSE, 1/4 X 17				
46.5	1	H4-66-FJFJ9	HOSE, 1/4, 3000 PSI, TOUGH COVER, 66 LONG, FJIC X FJIC 90 DEG				
46.6	3	H4-60-FJFJ	ASSEMBLY, HOSE, 1/4 X 60				
46.7	1	H4-100-FJFJ	HOE, 1/4, 3000 PSI, TOUGH COVER, 100 LONG, FJIC X FJIC				
46.8	1	H20-60-FJFJ9S	HOSE, 1 1/4, 60 LONG, FJIC X FJIC 90, SINGLE WIRE				
46.9	1	H6-20-FJFJ	ASSEMBLY, HOSE, 3/8				
46.10	1	H6-22-FJFJ	ASSEMBLY, HOSE, 3/8 X 22 LENGTH				



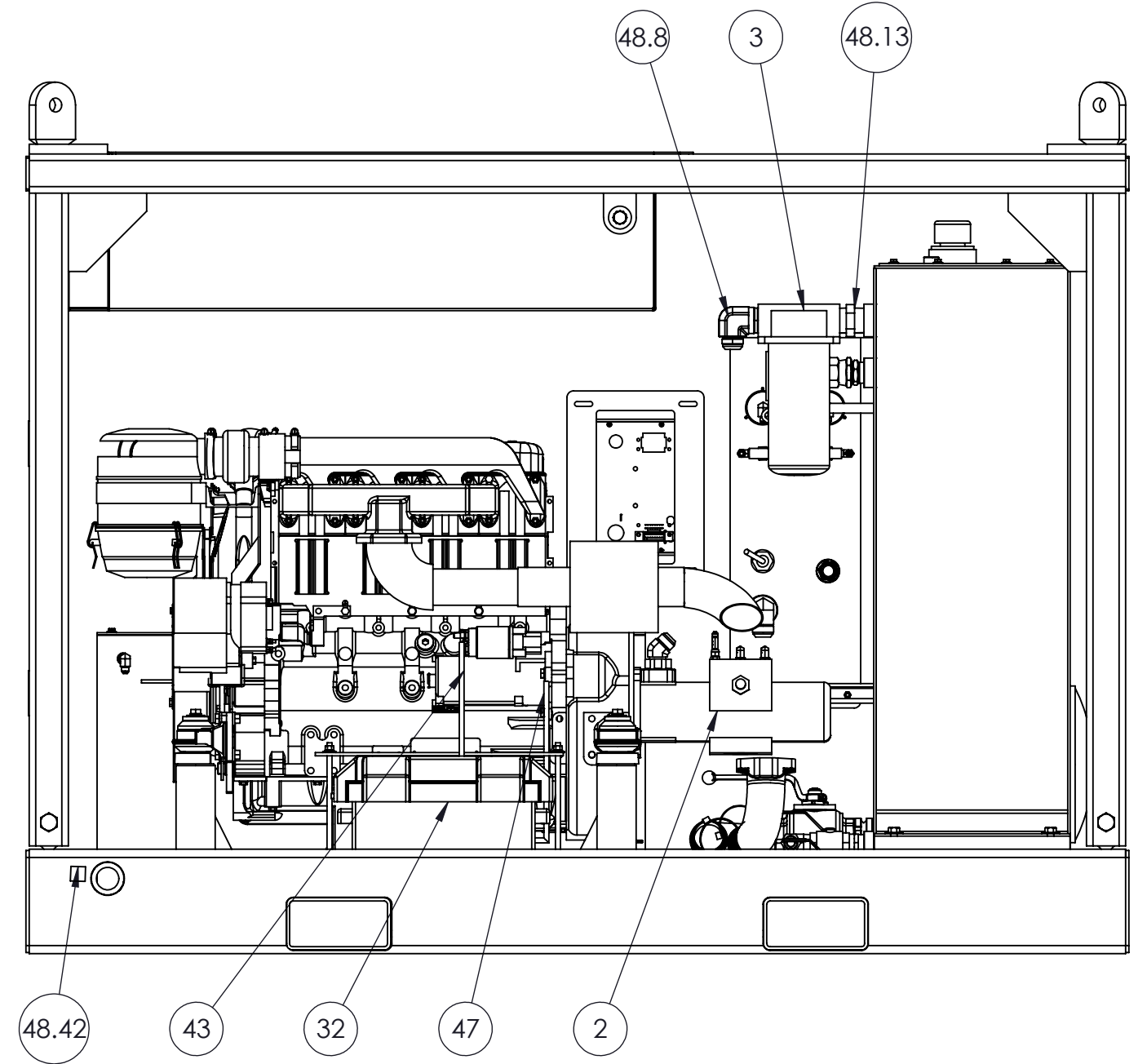
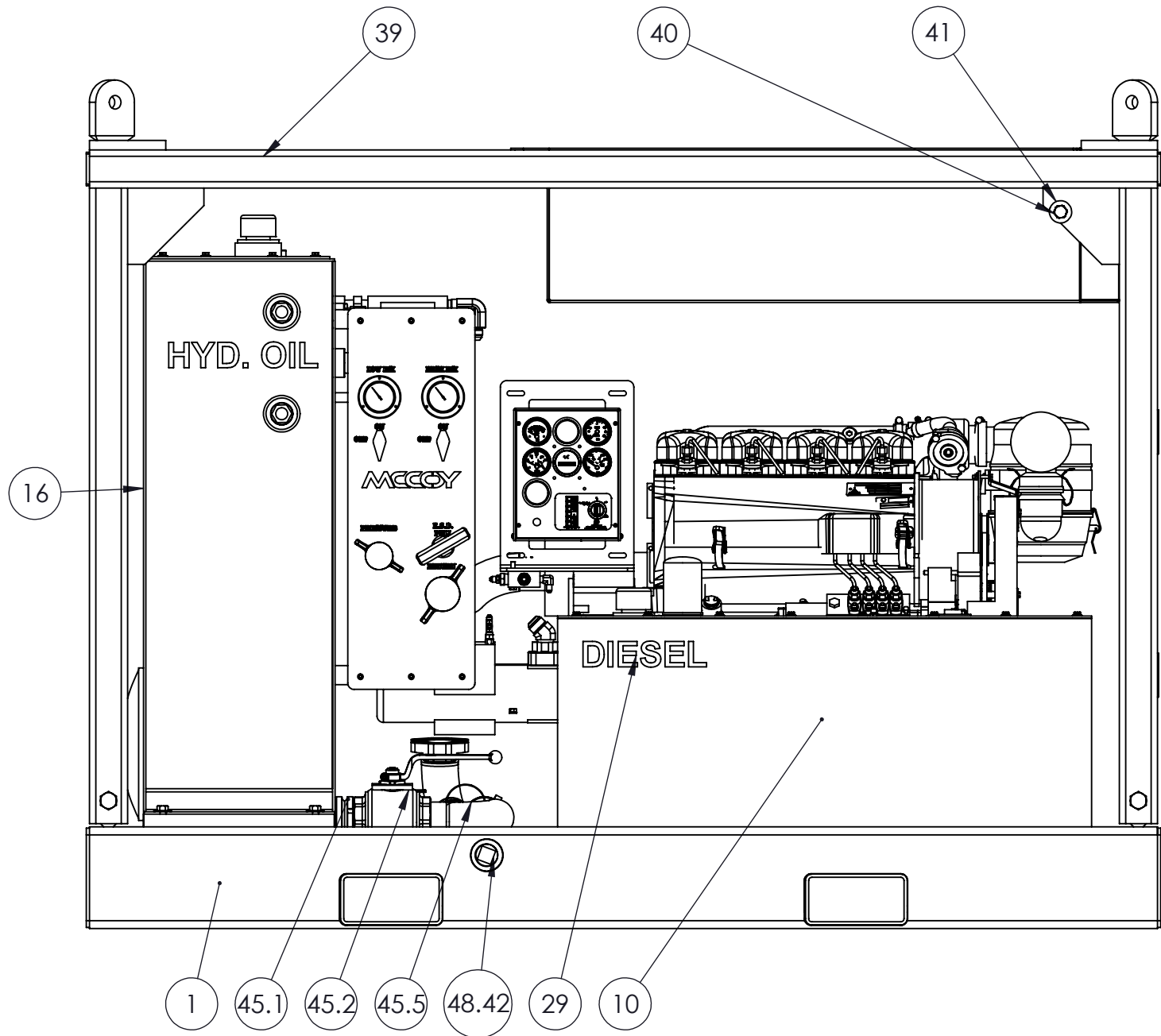
△

△

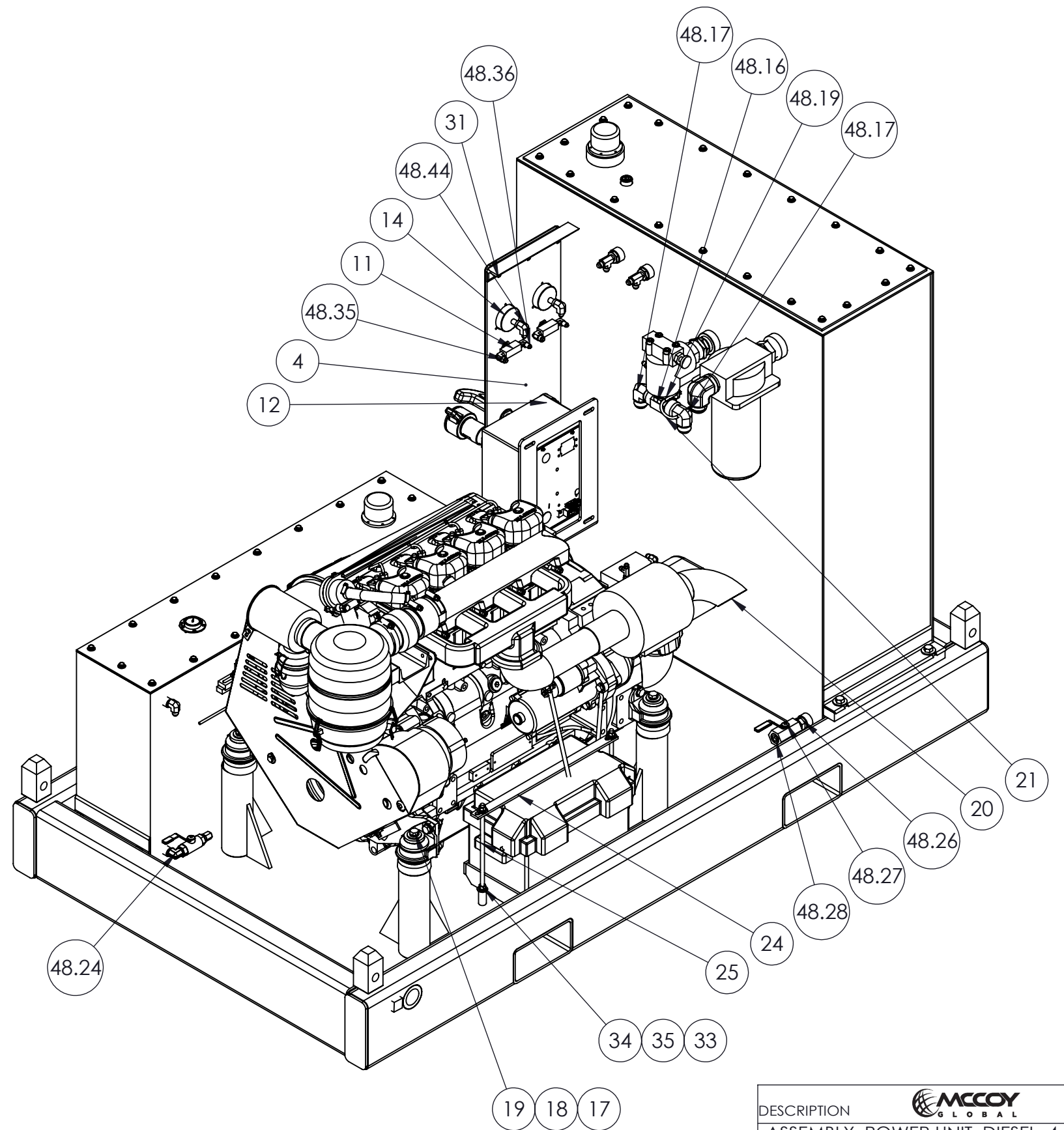
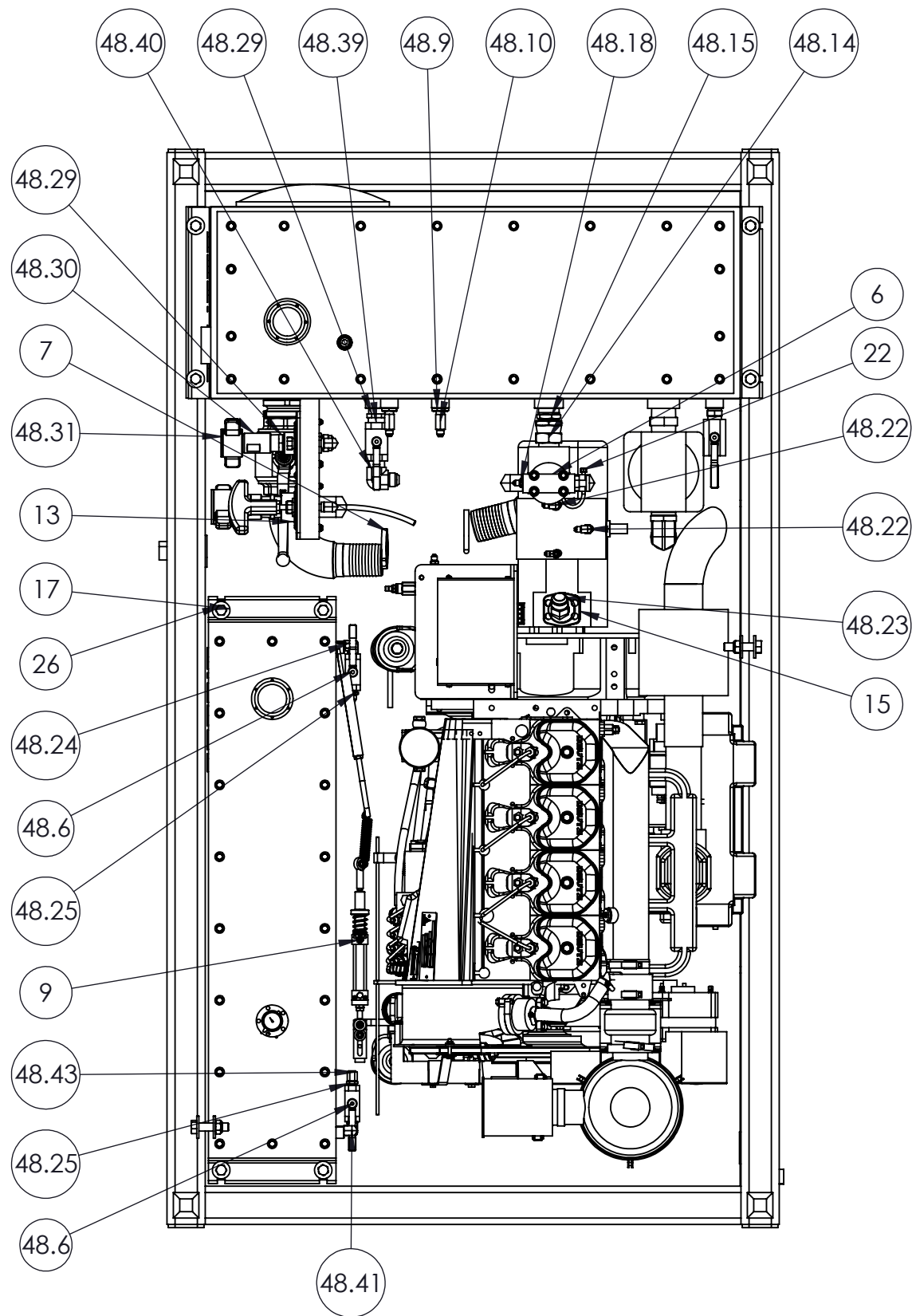
△

△

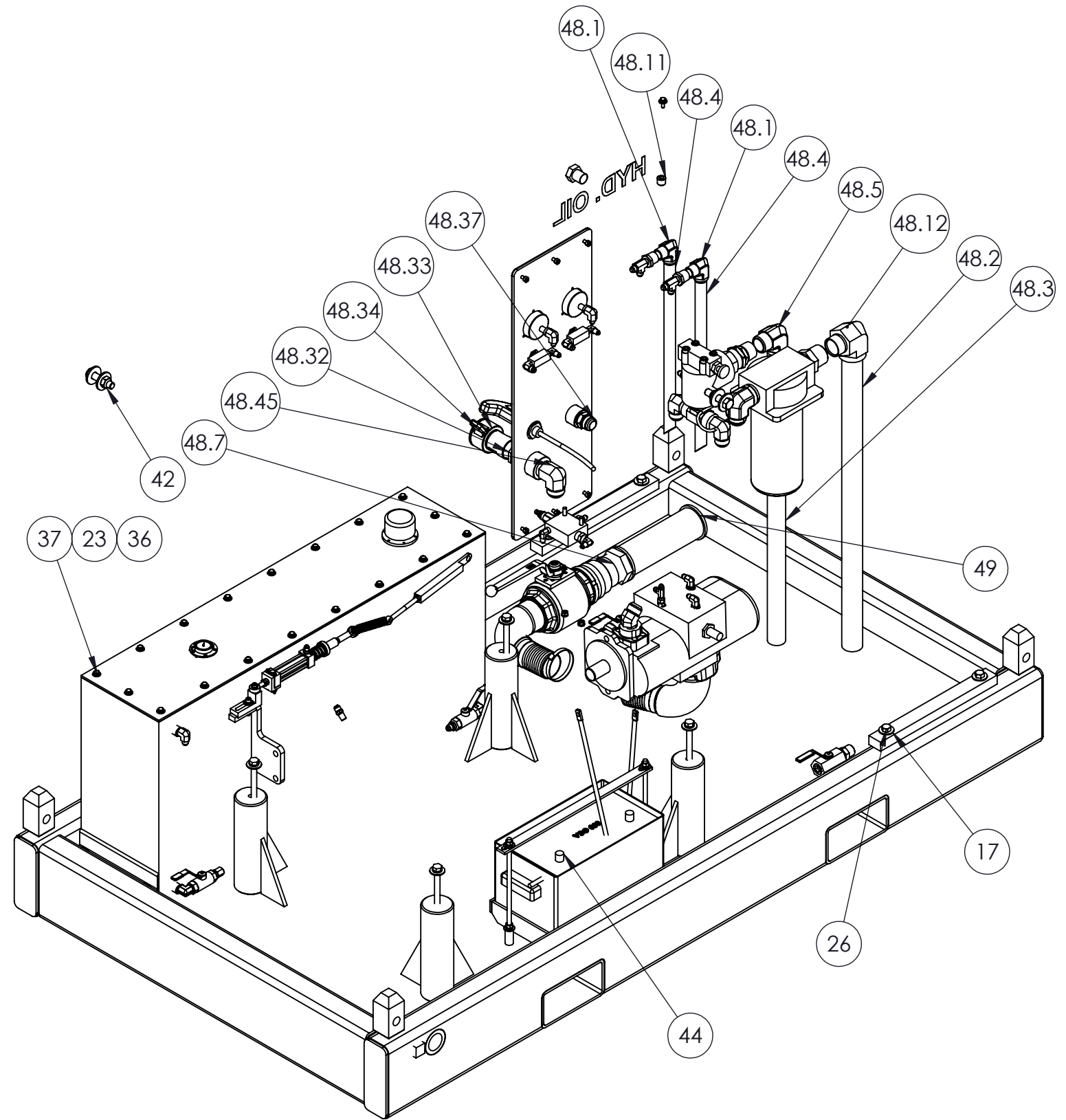
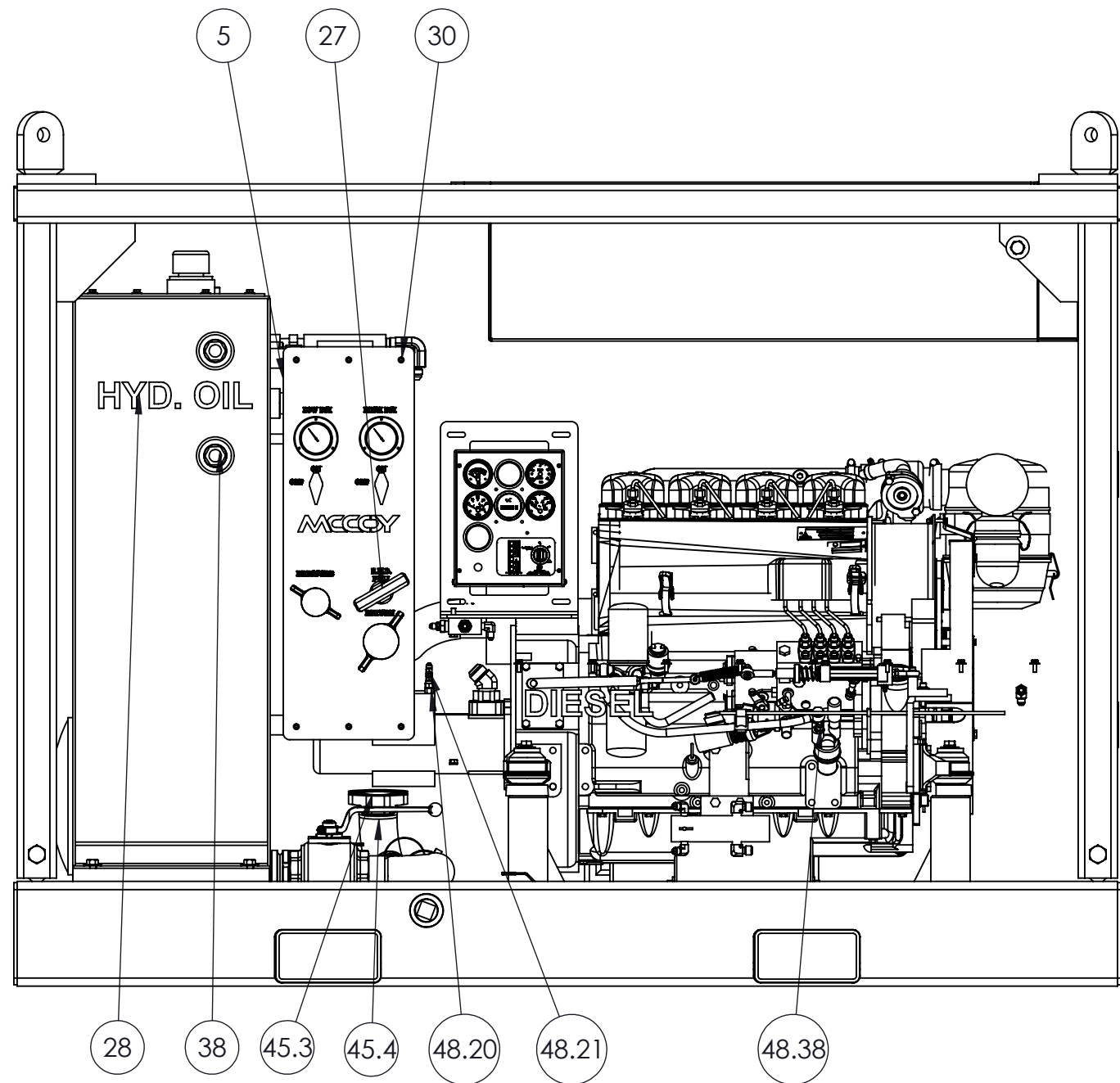
DESCRIPTION			
ASSEMBLY, POWER UNIT, DIESEL, 4 CYLINDER, ELECTRIC START, PARTIAL GATE			
SIZE	PART NO.	REV	
B	DPU440-06	C	
MATERIAL		SHEET 2 OF 5	
N/A			



DESCRIPTION			
ASSEMBLY, POWER UNIT, DIESEL, 4 CYLINDER, ELECTRIC START, PARTIAL GATE			
SIZE	PART NO.	REV	
B	DPU440-06	C	
MATERIAL		SHEET 3 OF 5	
N/A			



DESCRIPTION			
ASSEMBLY, POWER UNIT, DIESEL, 4 CYLINDER, ELECTRIC START, PARTIAL GATE			
SIZE	PART NO.	REV	
B	DPU440-06	C	
MATERIAL		SHEET 4 OF 5	
N/A			



DESCRIPTION			
ASSEMBLY, POWER UNIT, DIESEL, 4 CYLINDER, ELECTRIC START, PARTIAL GATE			
SIZE	PART NO.	REV	
B	DPU440-06	C	
MATERIAL		SHEET 5 OF 5	
N/A			