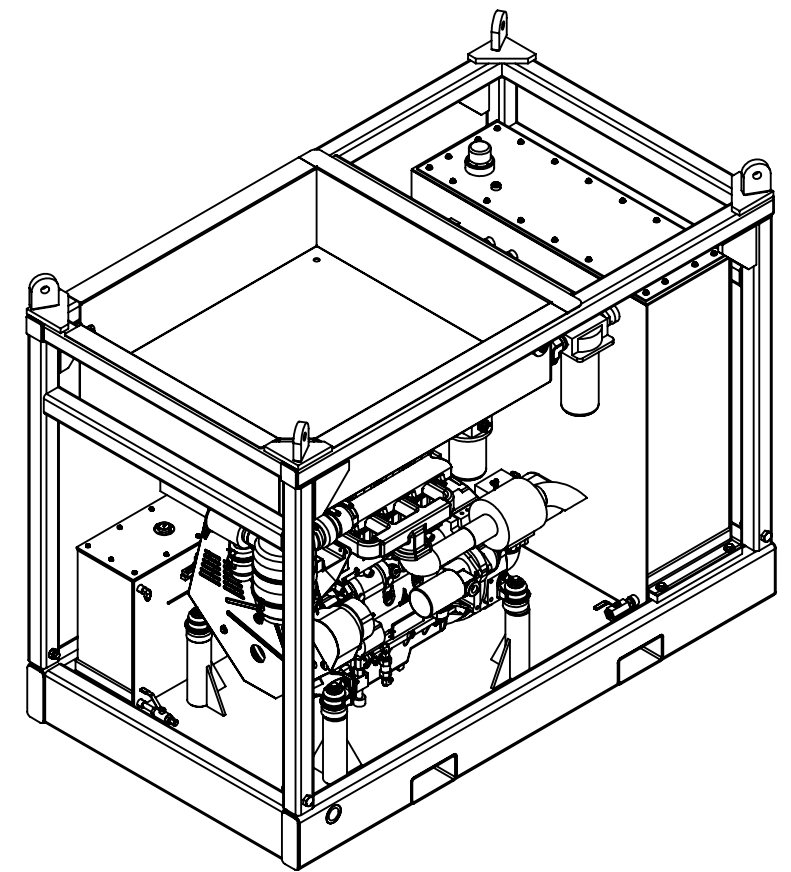
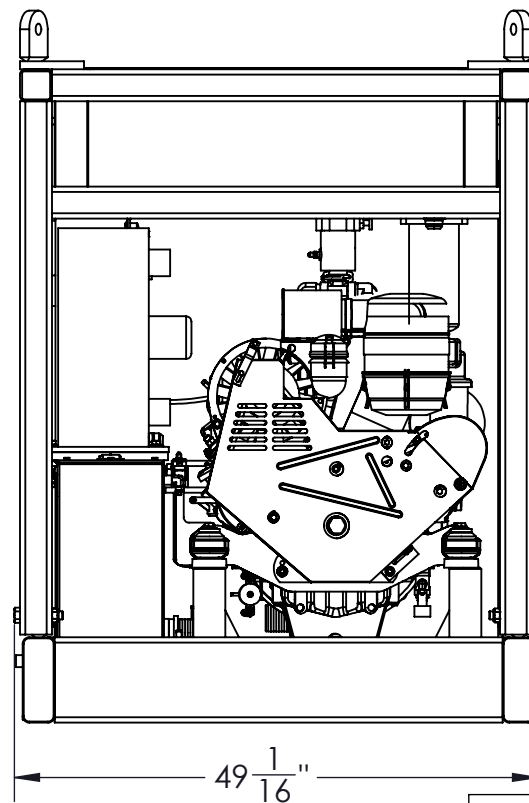
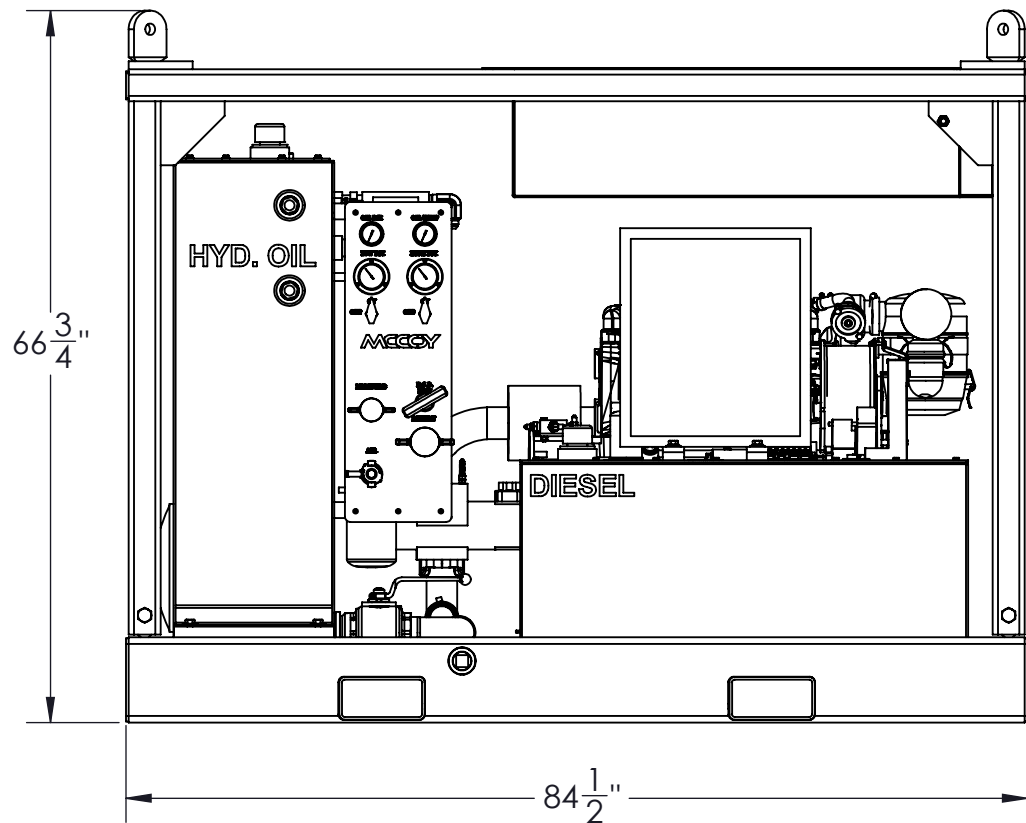


DPU440-11 SPECIFICATIONS	
MAXIMUM OPERATING PRESSURE	3000 PSI / 207 BAR
MAXIMUM DIESEL ENGINE OUTPUT	75 HP
MAXIMUM HYDRAULIC FLOW	40 GPM / 151 LPM
HYDRAULIC RESERVOIR CAPACITY	130 GALLON / 492 L
FUEL TANK CAPACITY	50 GALLON / 189 L
STARTER TYPE	AIR START
OIL REQUIREMENT	AW-68
SPECIAL FEATURES	2 STAGE GEAR PUMP
	COOLER



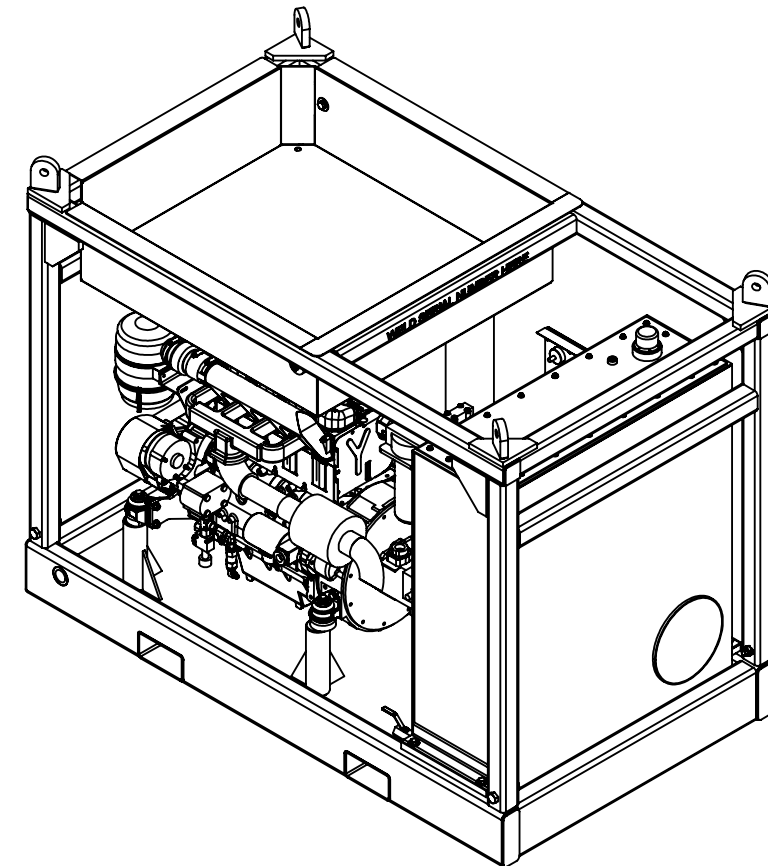
REVISIONS				
REVISION	ECN NUMBER	ECN DESCRIPTION	ECN COMPLETED BY	ECN COMPLETED DATE
A	N/A	INITIAL RELEASE	N/A	N/A
B	17-0101	ADD GA SHEET WITH SPECIFICATIONS; ADD (1) ASR115-6-5; REPLACE (1) 1443 W/ (1) 1670; REPLACE (1) H20-60-FJFJ95 W/ (1) H20-32-FJFJ95; REPLACE (1) W43-16-24U W/ (1) W43-16-16U	M.BUDDEN	4/26/2017

UNLESS OTHERWISE SPECIFIED:		PROPRIETARY STATEMENT		DESCRIPTION ASSEMBLY, POWER UNIT, DIESEL, 4 CYLINDER, WITH COOLER
1. DIMENSIONS ARE IN INCHES 2. TOLERANCES: ANGULAR ± .1° FRACTIONAL ± 1/16 TWO PLACE DECIMAL ± 0.02 THREE PLACE DECIMAL ± 0.005 3. IDENTIFY P/N & MAIL P.O. USING 1/8 TO 1/4 ETCHED LETTERS; DENOTED BY "X" 4. REMOVE BURRS & SHARP EDGES WITH 1/64x45° MAX 5. MACHINED FILET RADII SHALL BE 1/32 6. FINAL SURFACE ROUGHNESS AVG. (Ra) SHALL BE ≤ 250 MICRONS 7. Ø DENOTES CRITICAL DIMENSION; 100% INSPECTION REQUIRED 8. A TRIANGLE DENOTES A REVISION 9. INTERPRET DRAWING PER ASME Y14.5-2009		THIS DOCUMENT IS THE PROPERTY OF MCCOY CORPORATION AND IS CONSIDERED CONFIDENTIAL. THIS INFORMATION MAY NOT BE USED, DISCLOSED, COPIED, OR REPRODUCED IN ANY FORM, WITHOUT THE EXPRESS WRITTEN CONSENT OF MCCOY CORPORATION.		
DRAWN	J.KELLY	12/16/2016	MCCOY GLOBAL	
CHECKED	B.PEARCE	12/16/2016	SIZE	PART NO.
APPROVED	B.PEARCE	12/16/2016	B	DPU440-11
THIRD ANGLE PROJECTION	WEIGHT	3757.2 LBS.	MATERIAL	N/A
				REV B
				SHEET 1 OF 9

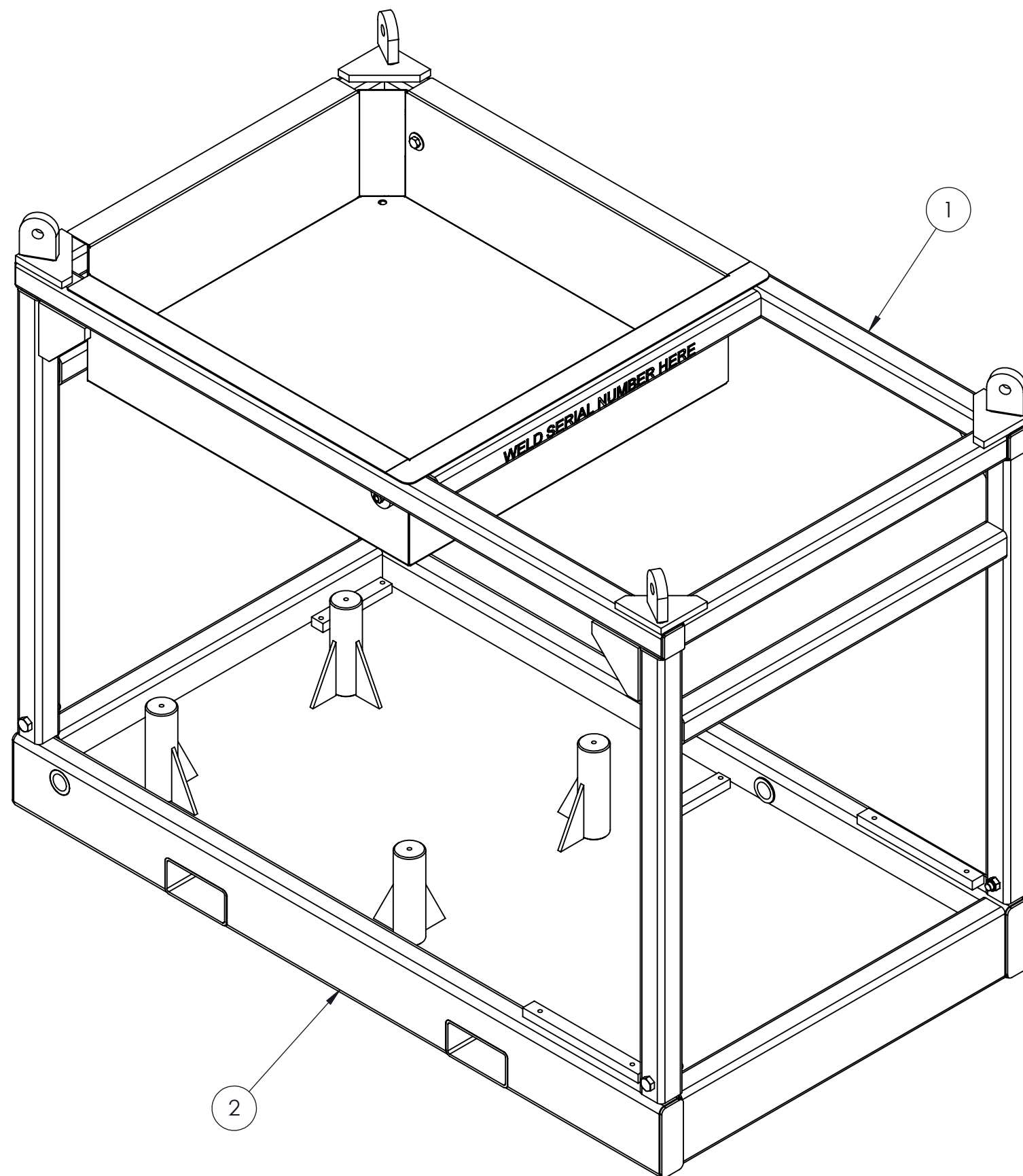
RELEASED FOR PRODUCTION


ITEM	QTY	P/N	DESCRIPTION	ITEM	QTY	P/N	DESCRIPTION	ITEM	QTY	P/N	DESCRIPTION
1	1	DBSKT-008	ASSEMBLY, HOSE BASKET	46	1	V500P-12	VALVE, BALL, BRASS, 3/4" NPT, PARKER# V500P-12	90	3	H4-60-FJFJ	ASSEMBLY, HOSE, 1/4 X 60
2	1	DSKD-01	WELDMENT, SKID, 4-CYL DPU	47	1	1610	FITTING, 3/4 MNPT, PLUG	91	1	H4-17-FJFJ	ASSEMBLY, HOSE, 1/4 X 17
3	1	GNSH15-15	PUMP, HYDRAULIC, HIGH/LOW	48	1	F6L914-S1	PULL HANDLE, EMERGENCY	92	1	H4-100-FJFJ	HOE, 1/4, 3000 PSI, TOUGH COVER, 100 LONG, FJIC X FJIC
4	1	DPU660-S1	BLOCK, FILTER	49	2	1462	FITTING, NIPPLE, HEX, 1"	93	1	H20-45-FJFJS	HOSE, 1 1/4, 45 LONG, SINGLE WIRE, FJIC X FJIC
5	1	2070	VALVE, RELIEF	50	1	1666	FITTING, QUICK DISCONNECT, PLUG, DUST, FEMALE, 1"	94	1	H16-21-FJFJ	ASSEMBLY, HOSE, 1 FJIC X 21, PARKER 451TC TOUGH COVER
6	2	D40H-75-300-SL	CLAMP, T-BOLT 2 1/2	51	1	1463	NIPPLE, HEX, 1 1/4"	95	1	H16-23-FJFJ	ASSEMBLY, HOSE, 1 FJIC X 23, PARKER 451TC TOUGH COVER
7	1	F4L914	ENGINE, DIESEL, 4 CYLINDER	52	2	1576-A	FITTING, 1/4 MNPT, 3/8 MJIC, ELBOW	96	1	7040HL-011-03	ASSEMBLY, THROTTLE CYLINDER, DIESEL ENGINE, 4 CYLINDER
8	1	W43-16-16U	FLANGE KIT, 1 FNPT, CODE 61	53	2	1576	FITTING, 1/4 MNPT, 1/4 MJIC, ELBOW	97	2	SLP-1	SIGHT, LEVEL, PLUG - 1 NPT
9	2	1391	FITTING, STREET ELBOW, LOW PRESSURE, 3/4	54	4	1469	FITTING, 1 MNPT, 1 MJIC, STRAIGHT	98	1	1445	FITTING, QUICK DISCONNECT, WING TYPE 1 1/4 FEMALE
10	1	PN24-33T	PIPE NIPPLE, 1 1/2 MNPT X 33, SCH 80	55	6	SST-18	SCREW, BUTTON HEAD, 1/4-20 X 1, STAINLESS	99	1	1440	FITTING, QUICK DISCONNECT, 1 FML-WING TYPE
11	1	PN20-33T	PIPE NIPPLE, 1 1/4 X 33 MNPT, SCH 80	56	6	1737	NUT, NYLOCK, 1/4-20 SS	100	1	F6L914-S2	WATER SERPARATOR, VENDOR PART NUMBER F329-08
12	2	PN12-20T	FITTING, 3/4 MNPT X 20 LONG SCH. 80 PIPE NIPPLE	57	1	1559	FITTING, ADAPTER, STRAIGHT, 3/8 MJIC, 1/4 MNPT	101	1	1670	FITTING, QUICK DISCONNECT, PLUG, DUST, FEMALE, 1 1/4
13	1	1393	FITTING, STREET ELBOW, LOW PRESSURE, 1 1/4 IN	58	1	7042HL-013	ASSEMBLY, BULKHEAD PLATE	102	1	H20-32-FJFJ9S	HOSE, 1 1/4, 32 LONG, FJIC X FJIC 90, SINGLE WIRE
14	1	HRES-130	ASSEMBLY, HYDRAULIC RESERVIOR, 130 GALLON	59	2	V500P-16	VALVE, BALL, BRASS, 1" NPT, PARKER# V500P-16				
15	1	PN40-C	PIPE NIPPLE, 2 1/2 X CLOSE, SCH. 80	60	1	UM-100-M	FITTING, MALE, FOOT				
16	16	1102	WASHER, FLAT, 1/2, STEEL, GR08	61	1	16F6X	FITTING, SWIVEL, 1 MNPT, 1 FJIC				
17	8	1103	LOCKWASHER, 1/2	62	1	DT-35G-01A	ASSEMBLY, TANK, DIESEL, 35 GALLON				
18	4	1260	SCREW, HEX HEAD, 1/2-13 X 5 1/4, GR8	63	1	PU2500-H21-02	HEAT EXCHANGER, WITH MOTOR				
19	1	DPU-100-S1	ELBOW, MUFFLER, 6 CYL ENGINE	64	1	DPU660-08-S1	PUMP, HYDRAULIC, COOLER FAN				
20	1	3-4HHP-S	FITTING, HEX PLUG, 3/4	65	1	0107-8-8-S	FITTING, STRAIGHT SWIVEL, 1/2 FNPT, 1/2 MNPT				
21	1	1448	FITTING, PIPE NIPPLE, CLOSE, 2 1/2" SCH. 40	66	1	8MRO-S	FITTING, RUN TEE, 1/2 FNPT, 1/2 FNPT				
22	1	BVAL-2500S-4321	VALVE, BALL, 2 1/2" SAE	67	1	1595	FITTING, 3/8 FNPT, 3/8 FNPT, 3/8 MNPT, TEE				
23	1	SBE-25HB-25SM-11	FITTING, 2 1/2 HOSE BARB X 2 1/2, CODE 61 FLANGE ADAPTER, 90 DEG	68	1	1491	FITTING, 1/2 MNPT, 3/8 FNPT, STRAIGHT				
24	1	20-24CTXS	FITTING, ELBOW, 90 DEG., 1 1/2" MNPT X 1 1/4" MJIC	69	1	1570	FITTING, 3/8 MNPT, 3/8 MJIC, STRAIGHT				
25	1	1494	FITTING, BUSHING, REDUCER, 3/4 MNPT X 3/8 FNPT	70	1	3-8CR-S	FITTING, 3/8 MNPT, ELBOW, 90 DEGREES				
26	1	1527	FITTING, TEE, 3/8" MNPT X 3/8" MJIC X 3/8" MJIC	71	1	8-6F5OG5-S	FITTING, REDUCER BUSHING, 1/2 MORB, 3/8 FNPT				
27	1	1609-A	PLUG, FLUSH, 1/2	72	1	DPU660-08-S4	VALVE, CHECK				
28	1	24CD	FITTING, ELBOW, 1 1/2 NPT, STREET EL	73	1	1464-A	FITTING, 1/2 MORB, 3/8 MJIC, ELBOW 1/2 MJIC				
29	1	1504	FITTING, PIPE NIPPLE, HEX, 1 1/2"	74	1	1727	FITTING, ADAPTER, 7/8 MORB, 1/2 FNPT, STRAIGHT				
30	1	20F6X	FITTING, SWIVEL, 1 1/4 MNPT, 1 1/4 FJIC	75	1	DPU660-08-S3	VALVE, BODY, ALUMINUM				
31	2	1470	FITTING, 1 1/4, MNPT, 1 1/4, MJIC, STRAIGHT	76	1	DPU660-08-S2	CARTRIDGE, RELIEF				
32	1	1669	FITTING, TEE, BRANCH, 1 MNPT, 1 FNPT	77	1	HYDOIL	LETTER, CLEAR, ADHESIVE				
33	2	1617	FITTING, 1 MNPT, 1 MJIC, ELBOW	78	1	1612-G	FITTING, PLUG, 1 1/2 NPT				
34	1	1562	FITTING, 1/4 MNPT, 1/4 MJIC, STRAIGHT	79	2	1371-A	FITTING, 1 MNPT, 1 MNPT, CLOSE, STRAIGHT, SCH 80				
35	1	1499	FITTING, REDUCER BUSHING, 1 1/4 X 1 NPT	80	1	1STRAINER	SUCTION STRAINER				
36	1	1014	U-BOLT, 1/4-20, 1 3/4 ID	81	2	H20-48-FJFJS	HOSE, 1 1/4 X 48 LONG, SINGLE WIRE, FJIC X FJIC				
37	2	100	NUT, HEX, 1/4-20, GR8	82	1	H12-72-FJFJ9	HOSE, 3/4, 3000 PSI, TOUGH COVER, 72 LONG, FJIC X FJIC 90 DEG				
38	2	101	WASHER, LOCK, 1/4, GR8	83	2	ASR115-6-5	FUEL HOSE, 3/8 X 5FT				
39	1	BSE-25HB-25S-11	ADAPTER, 2 1/2, 2 1/2, 90	84	1	H16-720-FJFJS	HOSE, 1 X 72 LONG, FJIC X FJIC, SINGLE WIRE				
40	1	40SFO	FLANGE, SPLIT, 2 1/2", CODE 61	85	1	H6-60-FJFJ9	HOSE, 3/8, 3000 PSI, 60 LONG, FJIC 90 DEG				
41	1	4f5ox-s	FITTING, 1/4 MORB, 1/4 MJIC, STRAIGHT	86	1	H6-22-FJFJ	ASSEMBLY, HOSE, 3/8 X 22 LENGTH				
42	1	4R6X-S	FITTING, 1/4 FJIC SWIVEL, 1/4 MJIC, RUN TEE	87	1	H6-20-FJFJ	ASSEMBLY, HOSE, 3/8				
43	3	4-6C5OX-S	FITTING, 3/8 MORB, 1/4 MJIC, ELBOW	88	1	H6-100-FJFJ	HOE, 3/8, 3000 PSI, TOUGH COVER, 100 LONG, FJIC X FJIC				
44	12	1111	SCREW, HEX, 1/2-13, 1 1/4, STEEL, GR8, ZINC	89	1	H4-66-FJFJ9	HOSE, 1/4, 3000 PSI, TOUGH COVER, 66 LONG, FJIC X FJIC 90 DEG				
45	1	1461	FITTING, 3/4 MNPT, 3/4 MNPT, HEX NIPPLE								

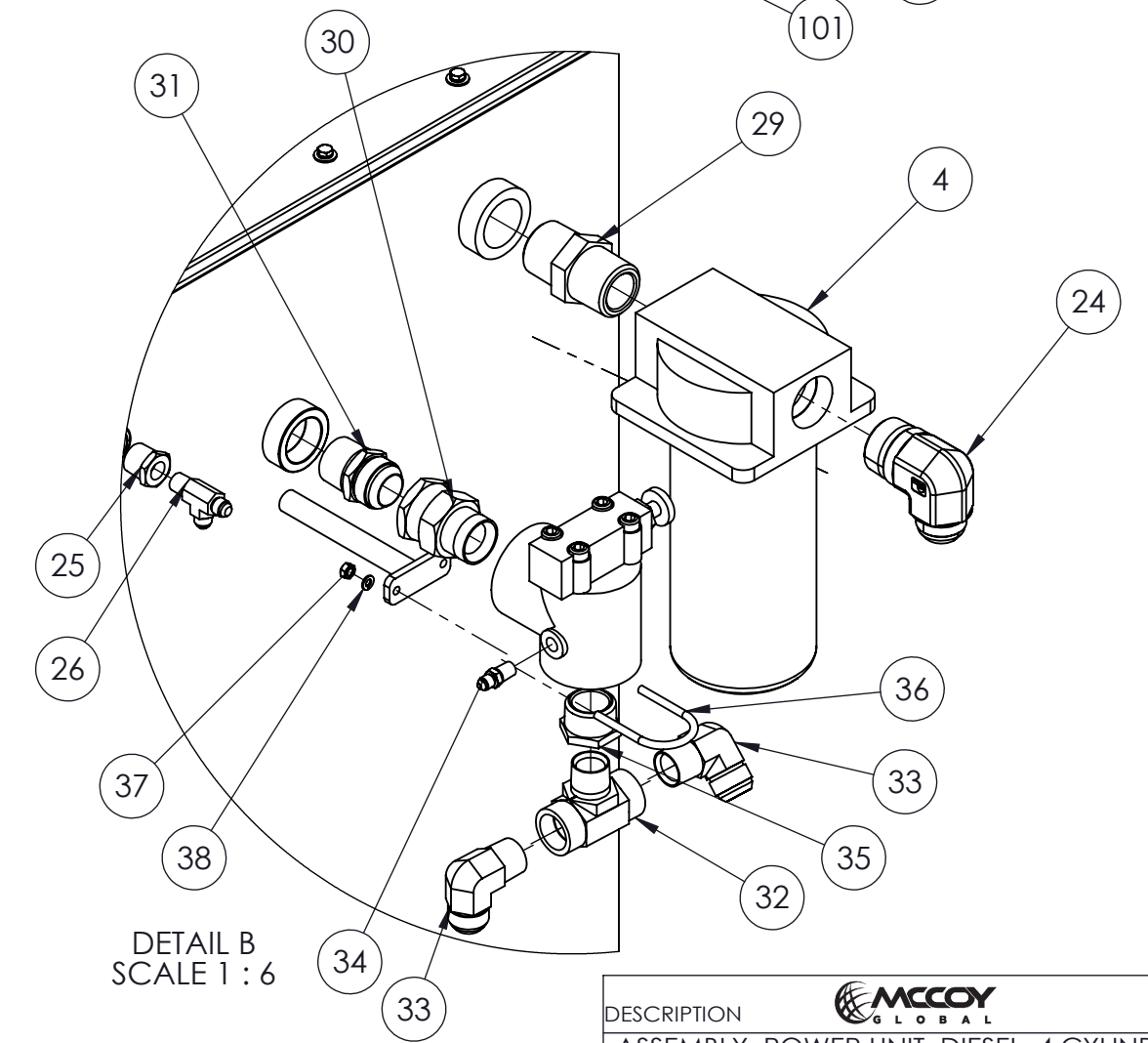
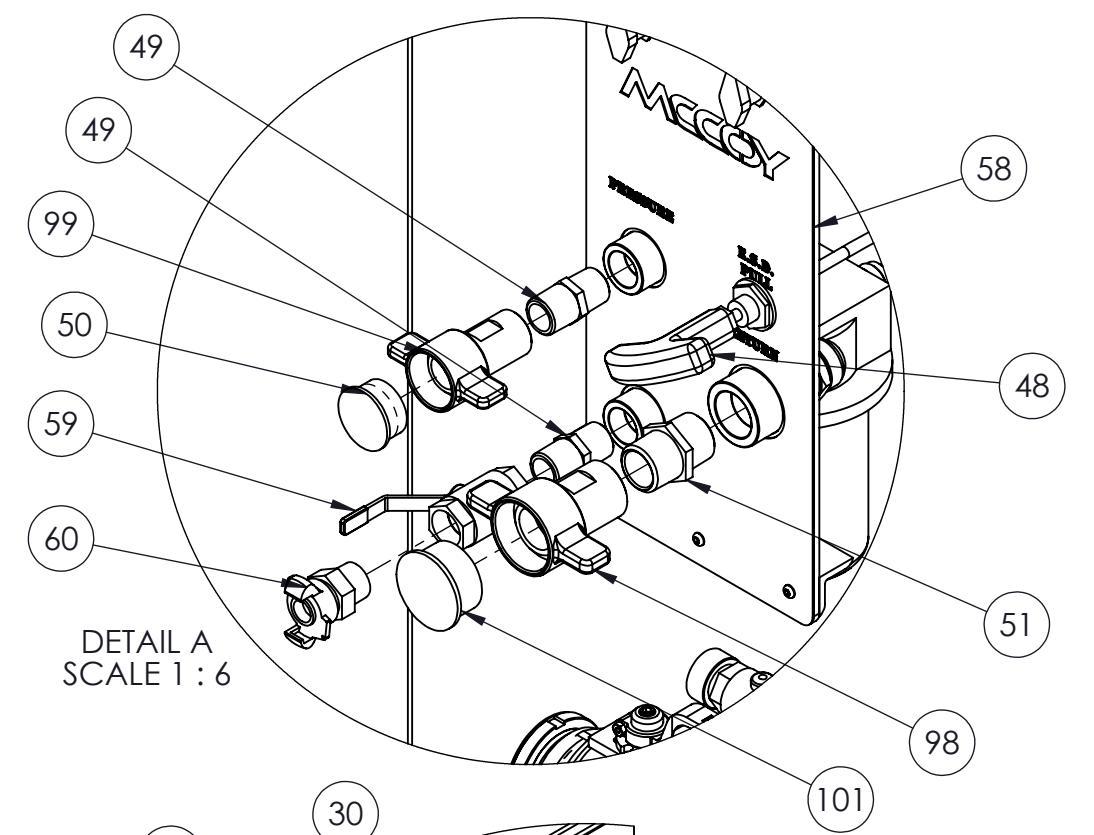
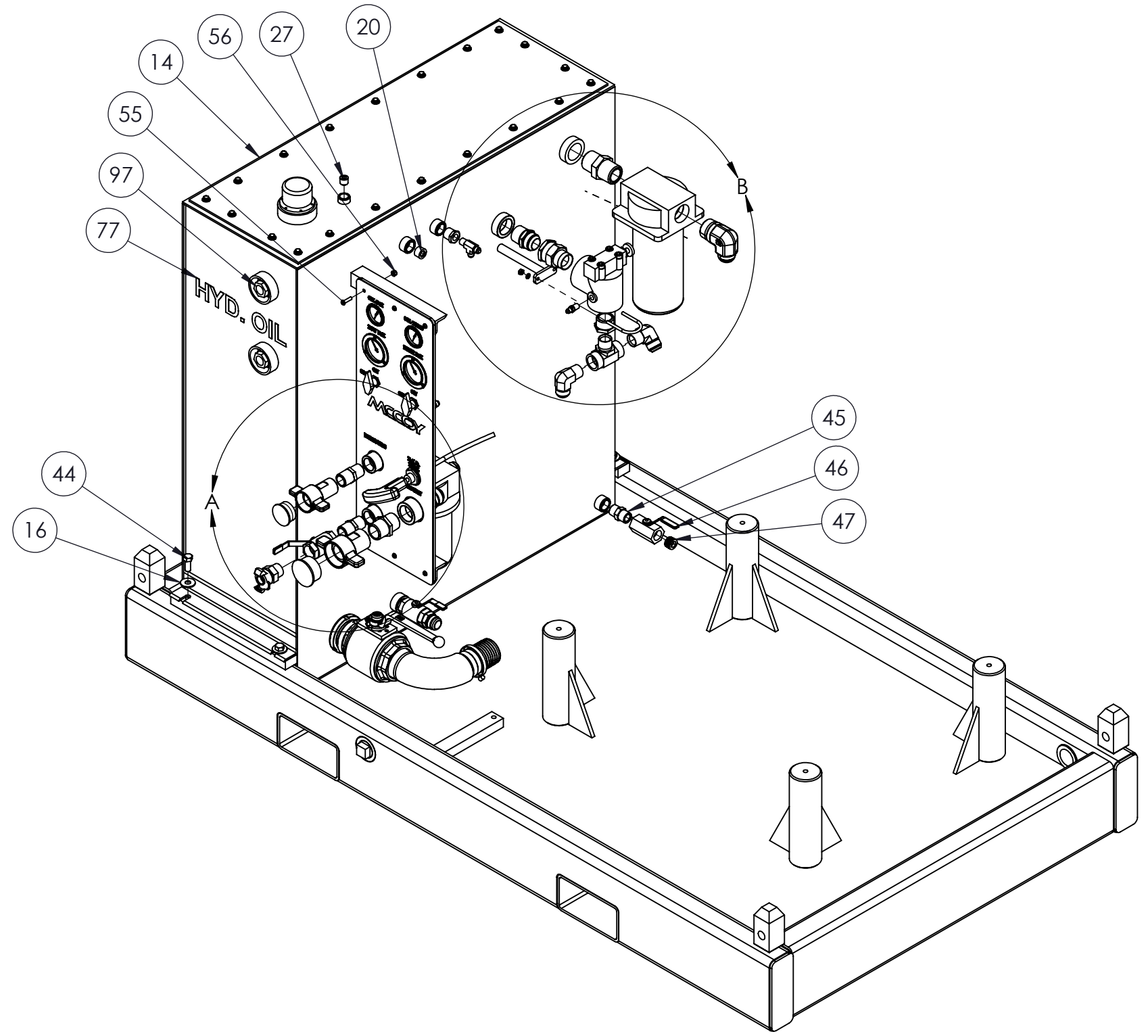



DESCRIPTION			
ASSEMBLY, POWER UNIT, DIESEL, 4 CYLINDER, WITH COOLER			
SIZE	PART NO.	REV	
B	DPU440-11	B	
MATERIAL	N/A	SHEET 2 OF 9	

# FRAME ONLY

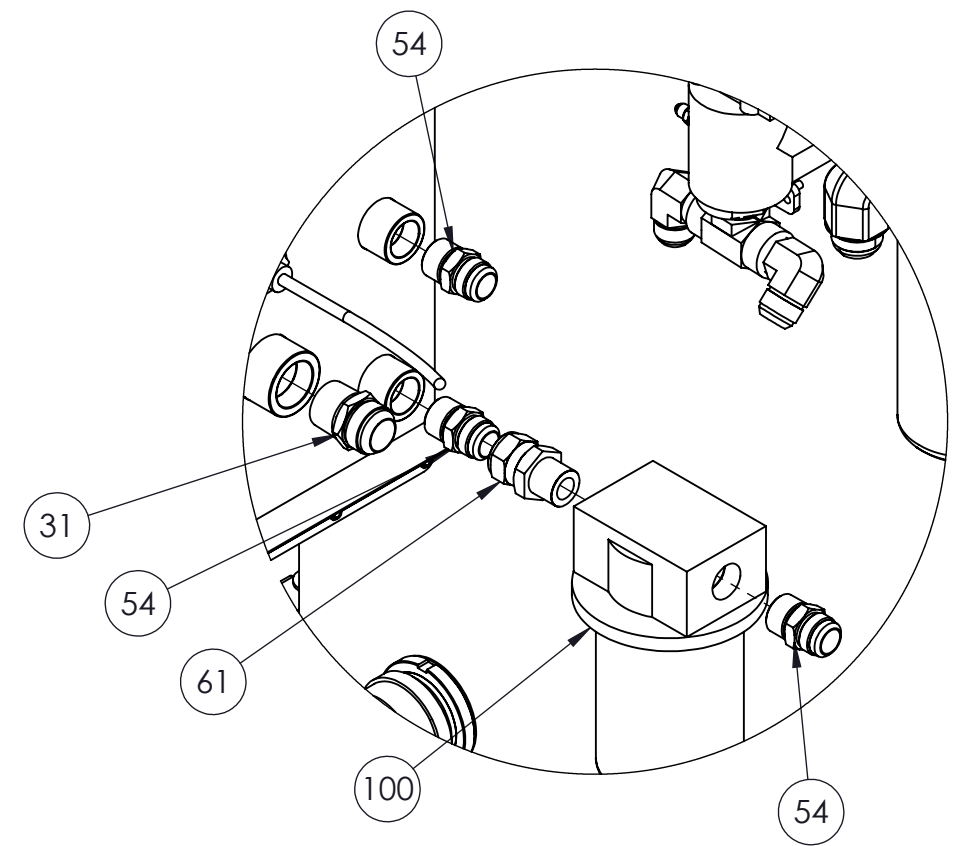
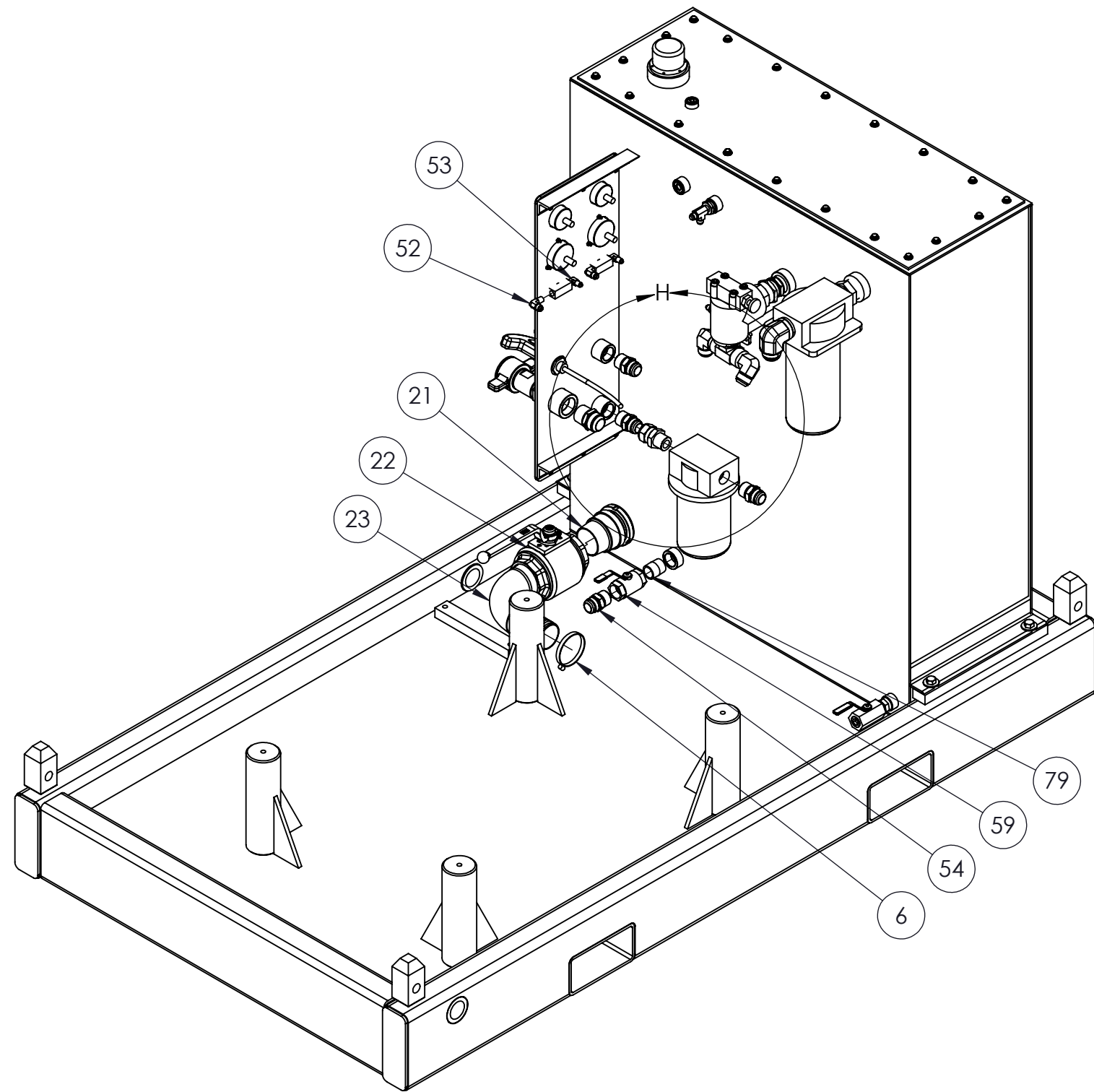


DESCRIPTION			
ASSEMBLY, POWER UNIT, DIESEL, 4 CYLINDER, WITH COOLER			
SIZE	PART NO.		REV
B	DPU440-11		B
MATERIAL		N/A	SHEET 3 OF 9




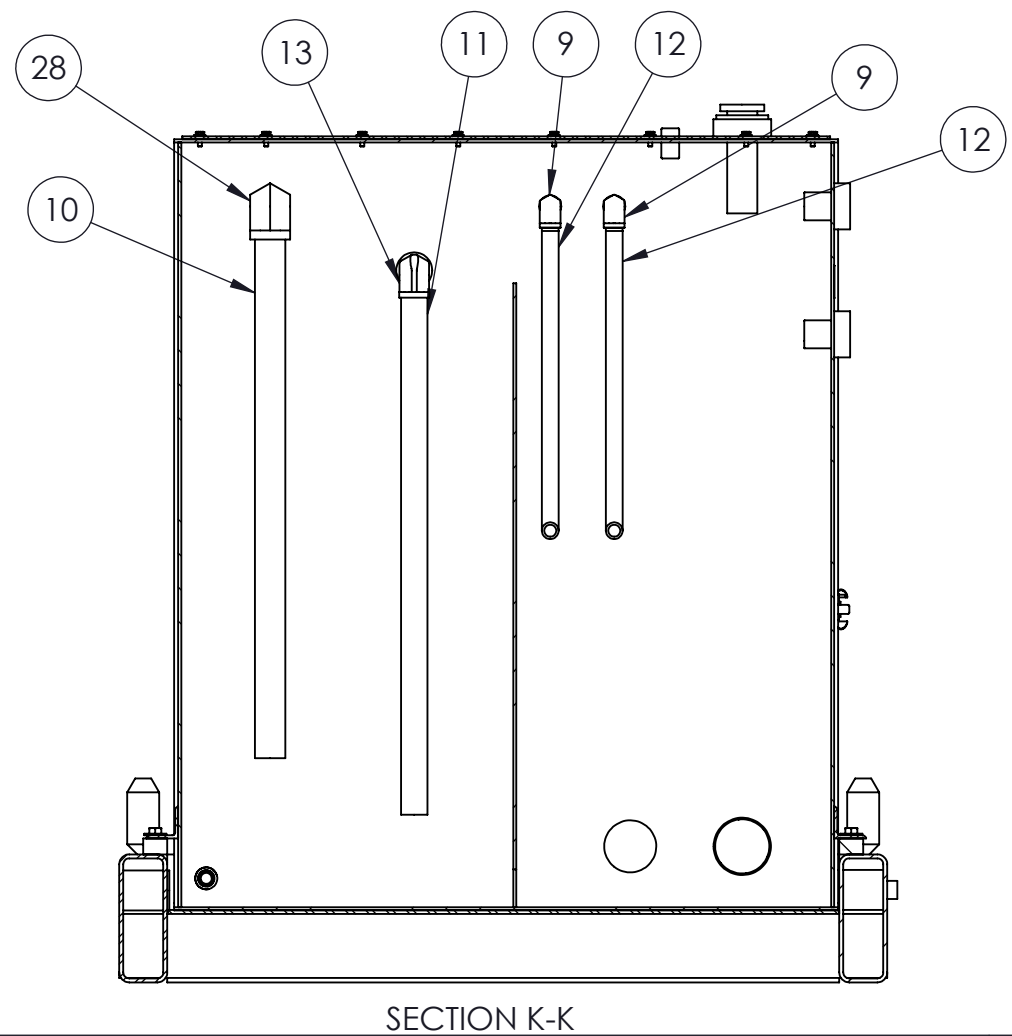
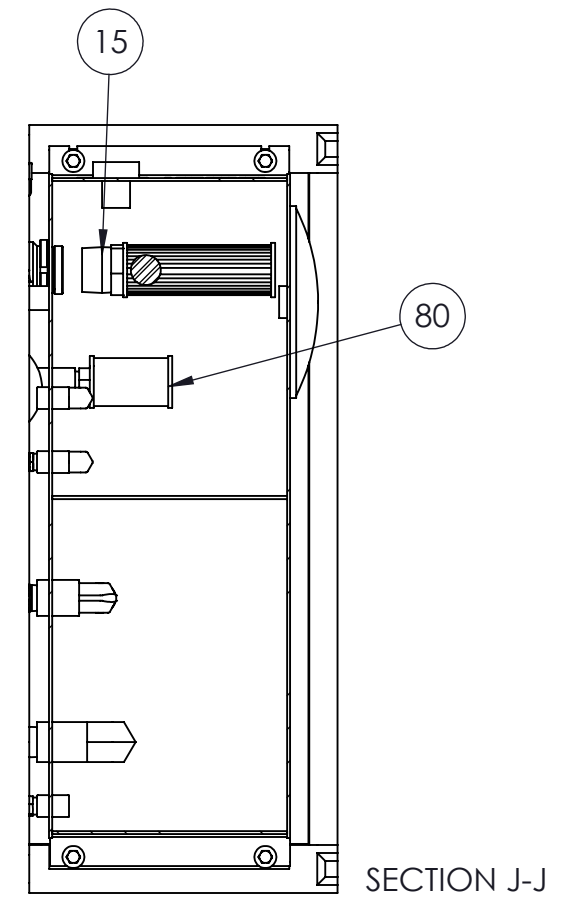
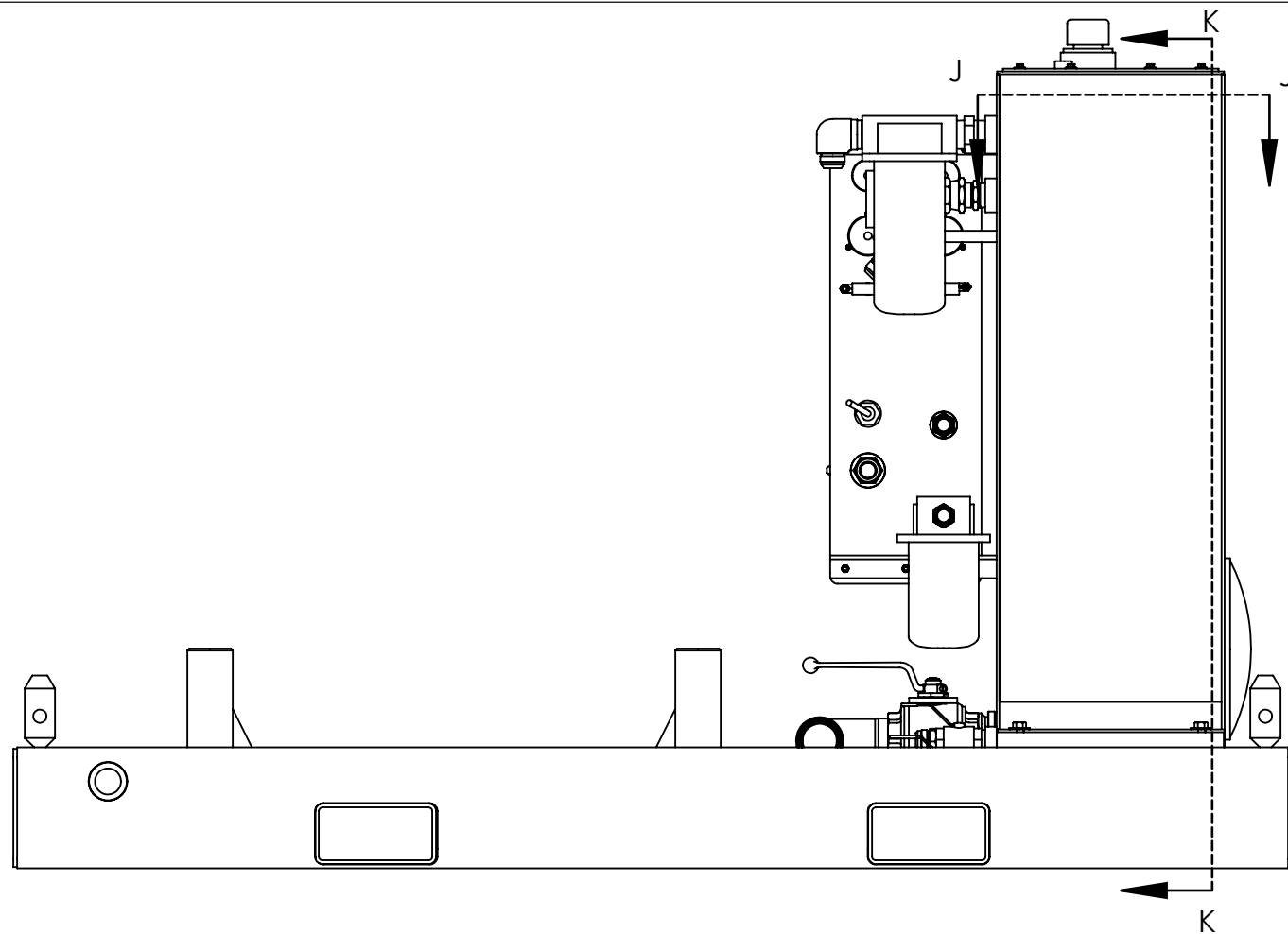
DESCRIPTION			
ASSEMBLY, POWER UNIT, DIESEL, 4 CYLINDER, WITH COOLER			
SIZE	PART NO.	REV	
B	DPU440-11	B	
MATERIAL	N/A	SHEET 4 OF 9	



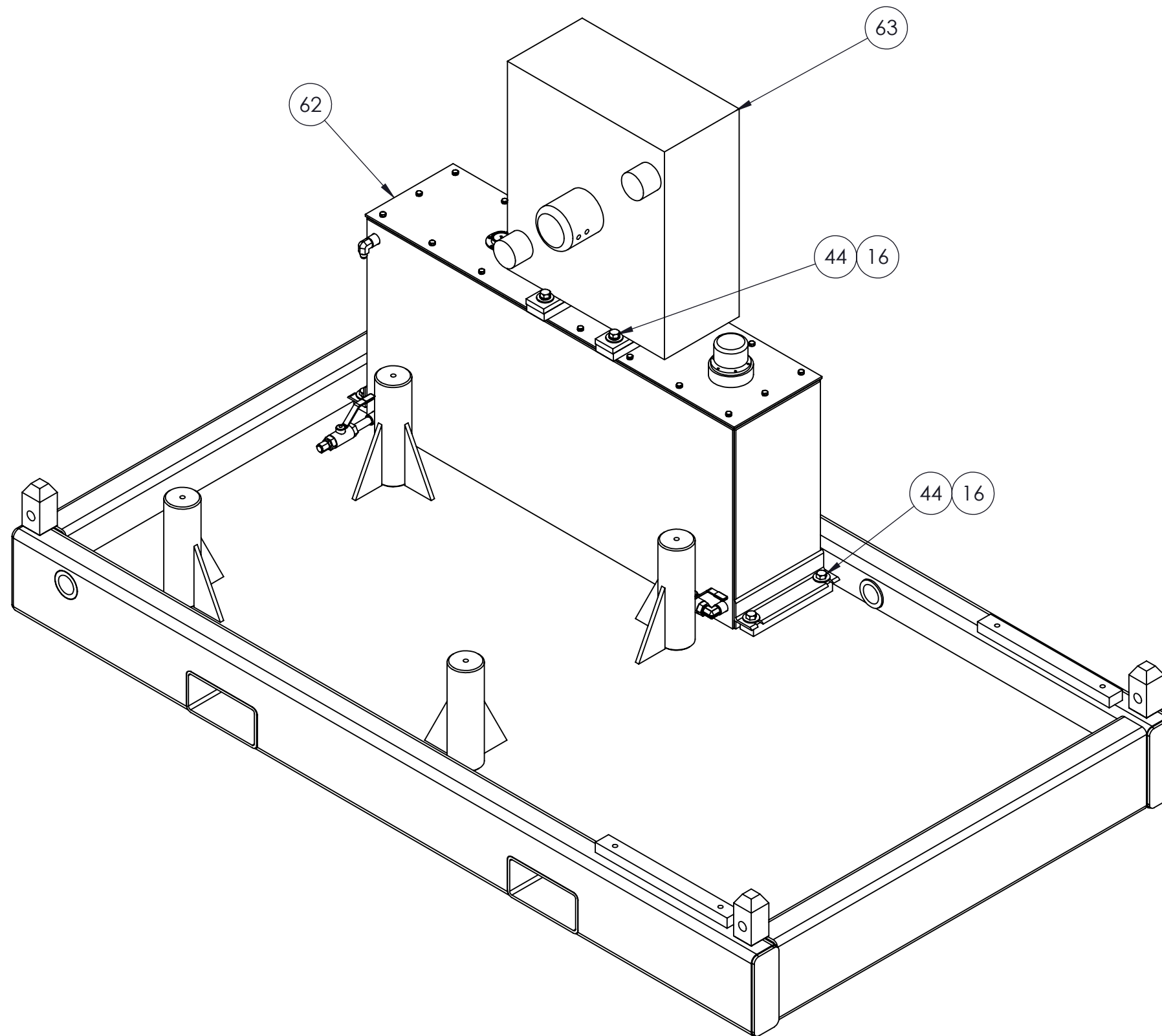



DETAIL H  
SCALE 1 : 6

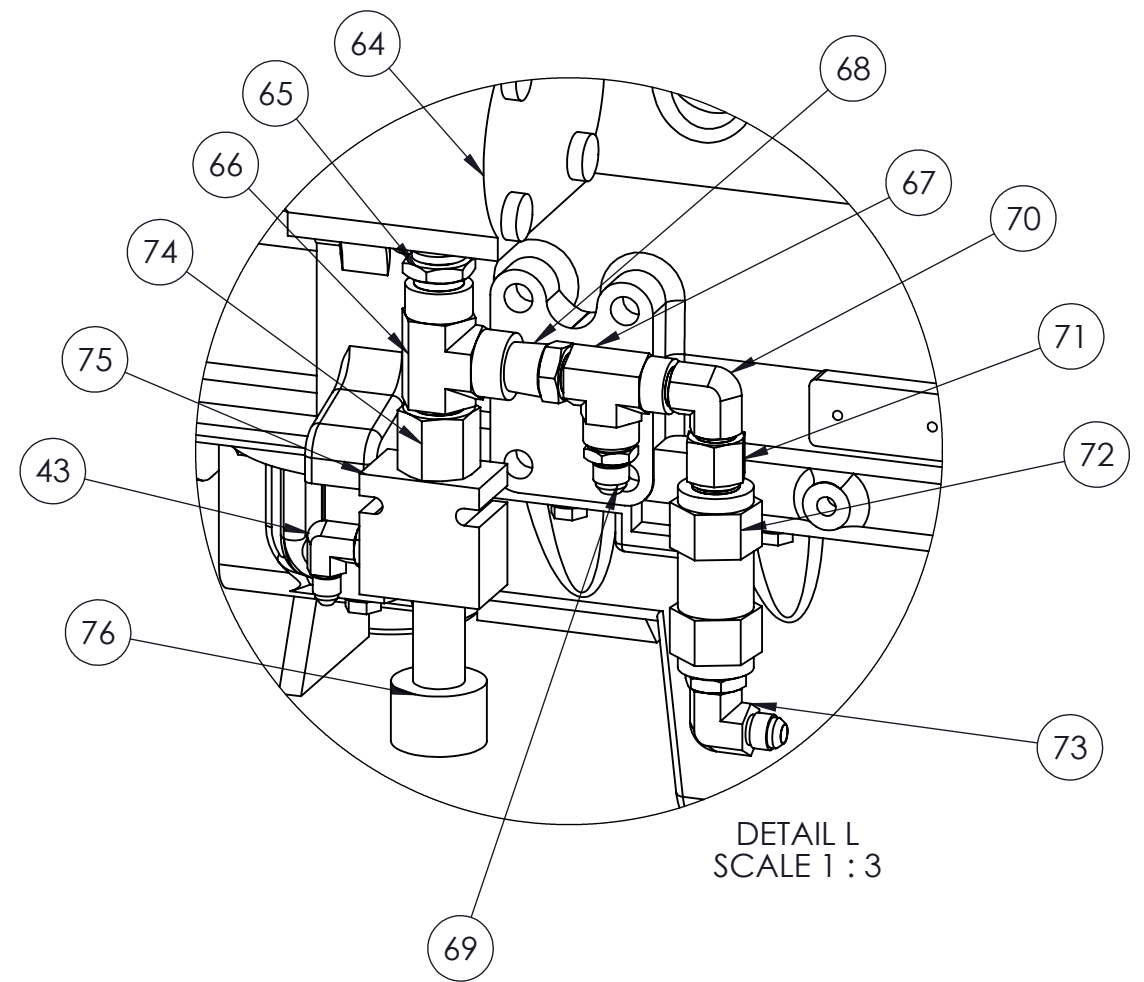
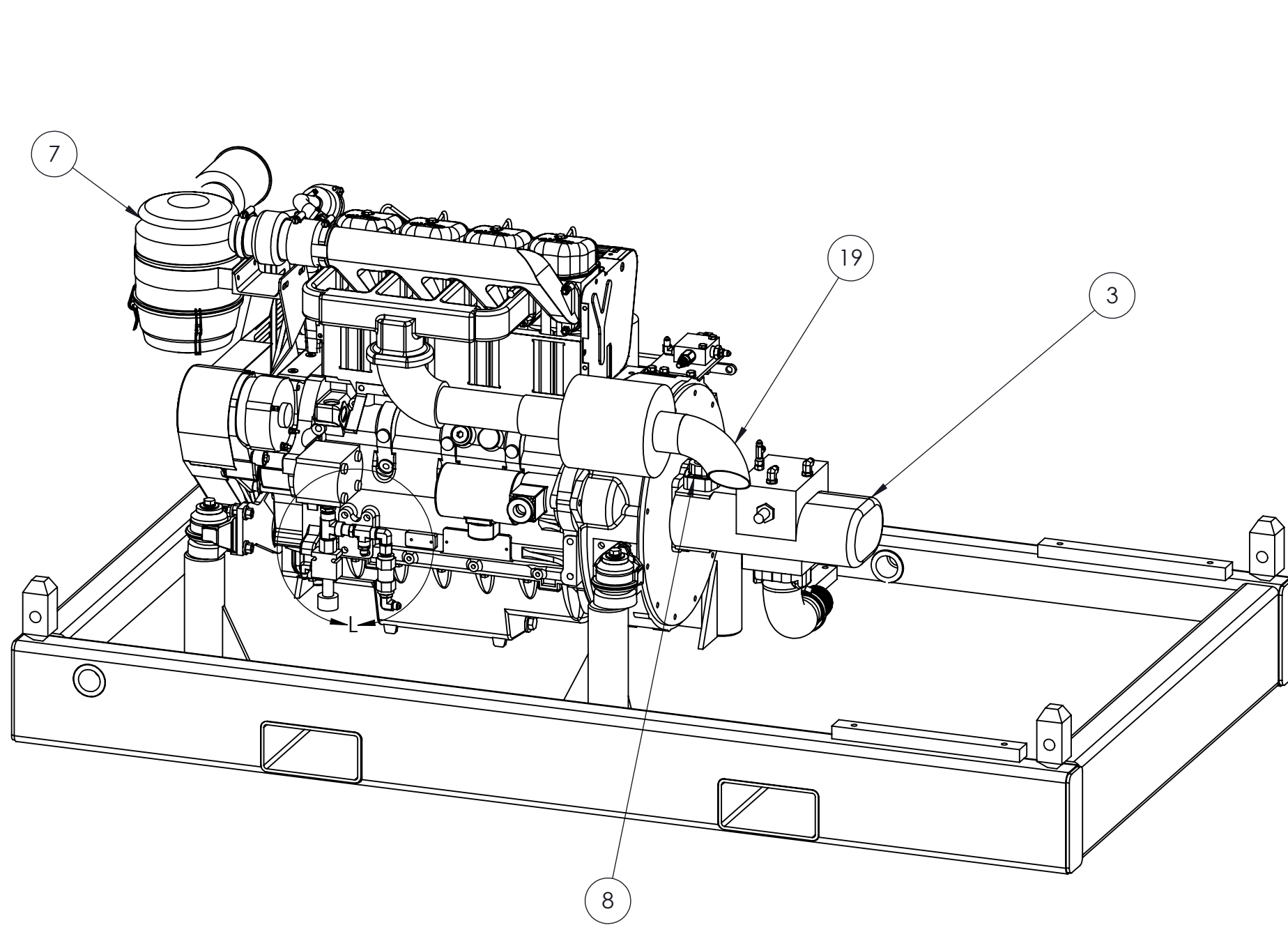
DESCRIPTION	 ASSEMBLY, POWER UNIT, DIESEL, 4 CYLINDER, WITH COOLER	
SIZE	PART NO.	REV
B	DPU440-11	B
MATERIAL	N/A	SHEET 5 OF 9



DESCRIPTION			
ASSEMBLY, POWER UNIT, DIESEL, 4 CYLINDER, WITH COOLER			
SIZE	PART NO.	REV	
B	DPU440-11	B	
MATERIAL	N/A	SHEET 6 OF 9	

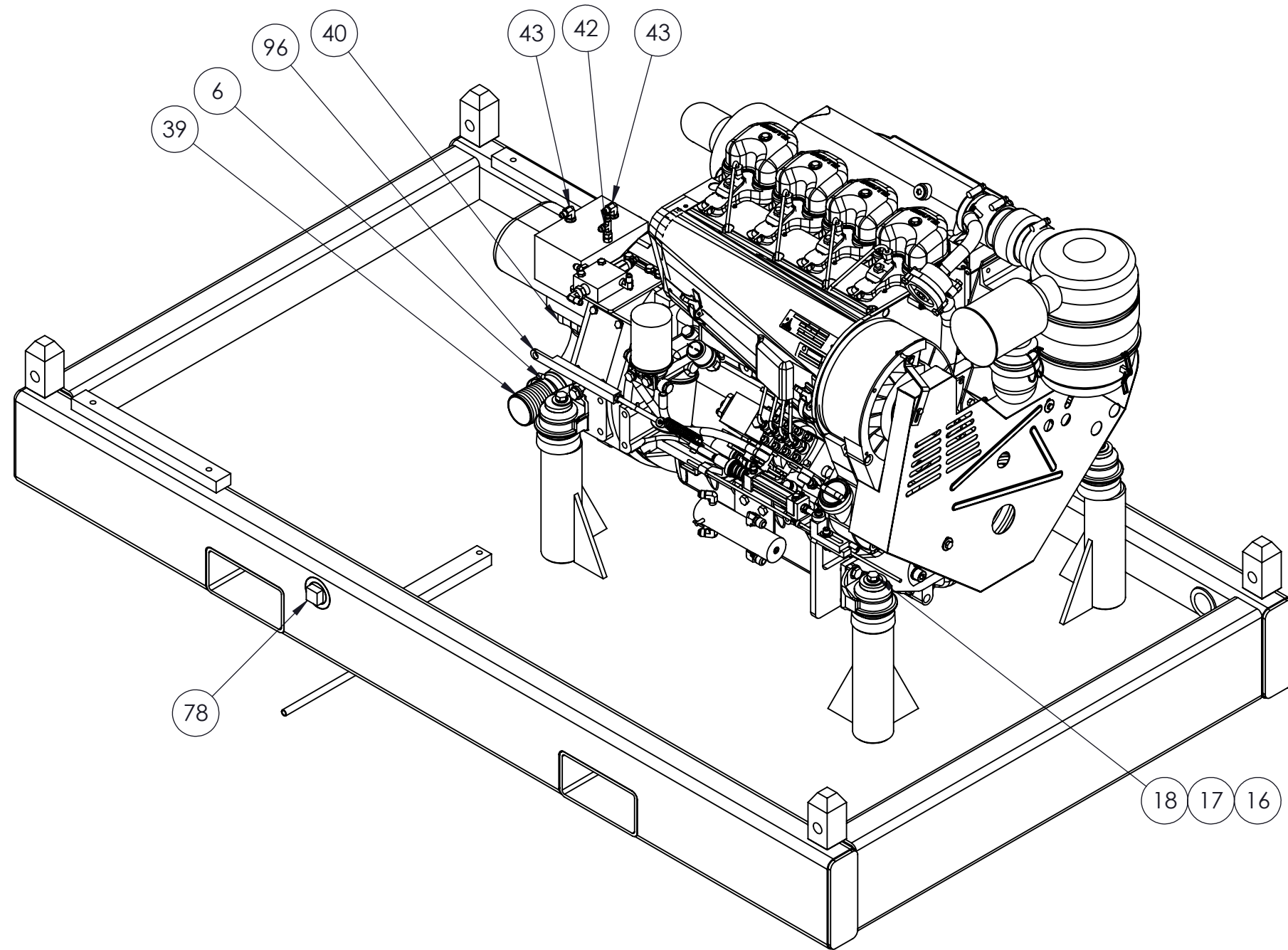



DESCRIPTION			
ASSEMBLY, POWER UNIT, DIESEL, 4 CYLINDER, WITH COOLER			
SIZE	PART NO.		REV
B	DPU440-11		B
MATERIAL		N/A	SHEET 7 OF 9



DESCRIPTION			
ASSEMBLY, POWER UNIT, DIESEL, 4 CYLINDER, WITH COOLER			
SIZE	PART NO.	REV	
B	DPU440-11	B	
MATERIAL		SHEET 8 OF 9	
N/A			





DESCRIPTION			
ASSEMBLY, POWER UNIT, DIESEL, 4 CYLINDER, WITH COOLER			
SIZE	PART NO.		REV
B	DPU440-11		B
MATERIAL		N/A	SHEET 9 OF 9