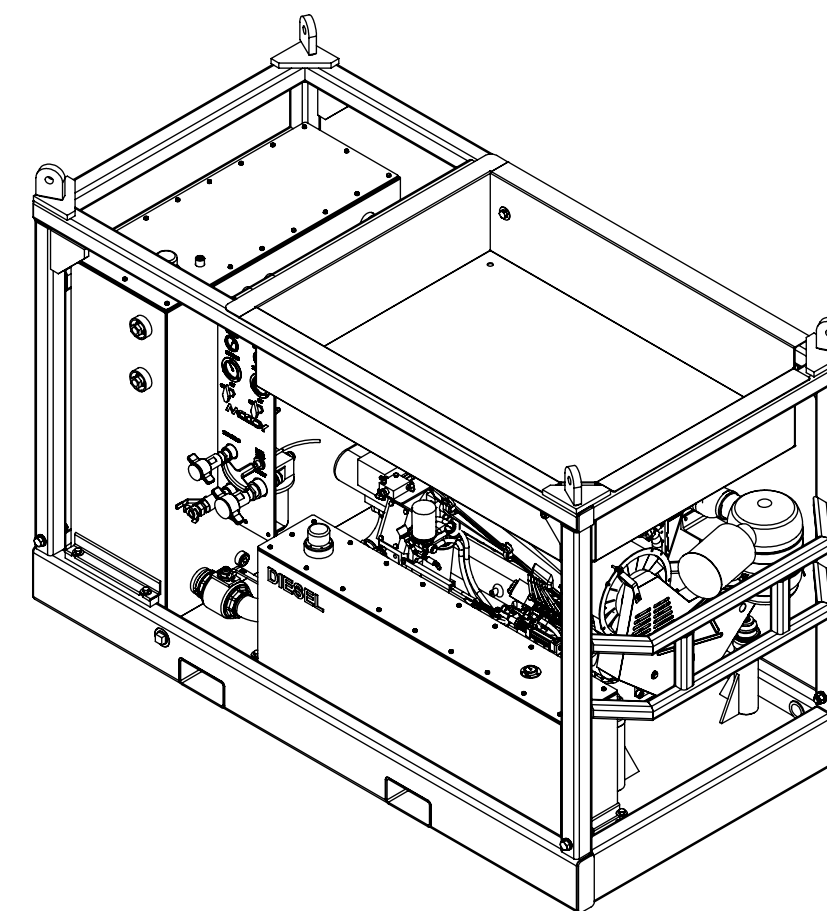
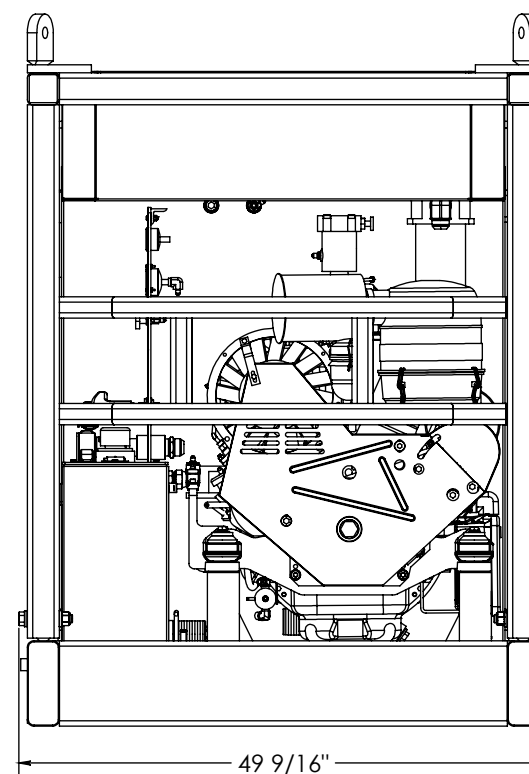
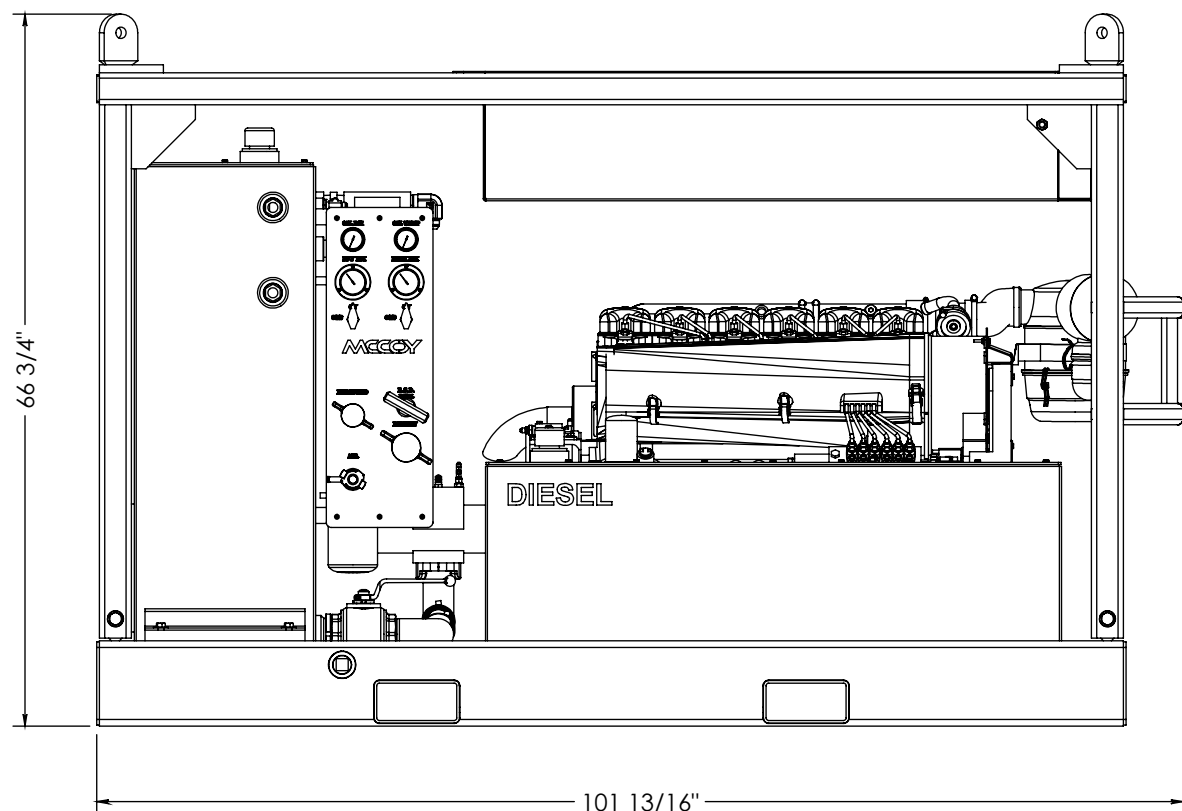


DPU660-05 SPECIFICATIONS	
MAXIMUM OPERATING PRESSURE	3000 PSI / 207 BAR
MAXIMUM DIESEL ENGINE OUTPUT	114 HP
MAXIMUM HYDRAULIC FLOW	60 GPM
HYDRAULIC RESERVOIR CAPACITY	140 GALLON / 530 L
FUEL TANK CAPACITY	42 GALLON / 159 L
STARTER TYPE	AIR START
OIL REQUIREMENT	AW-68
SPECIAL FEATURES	2 STAGE GEAR PUMP

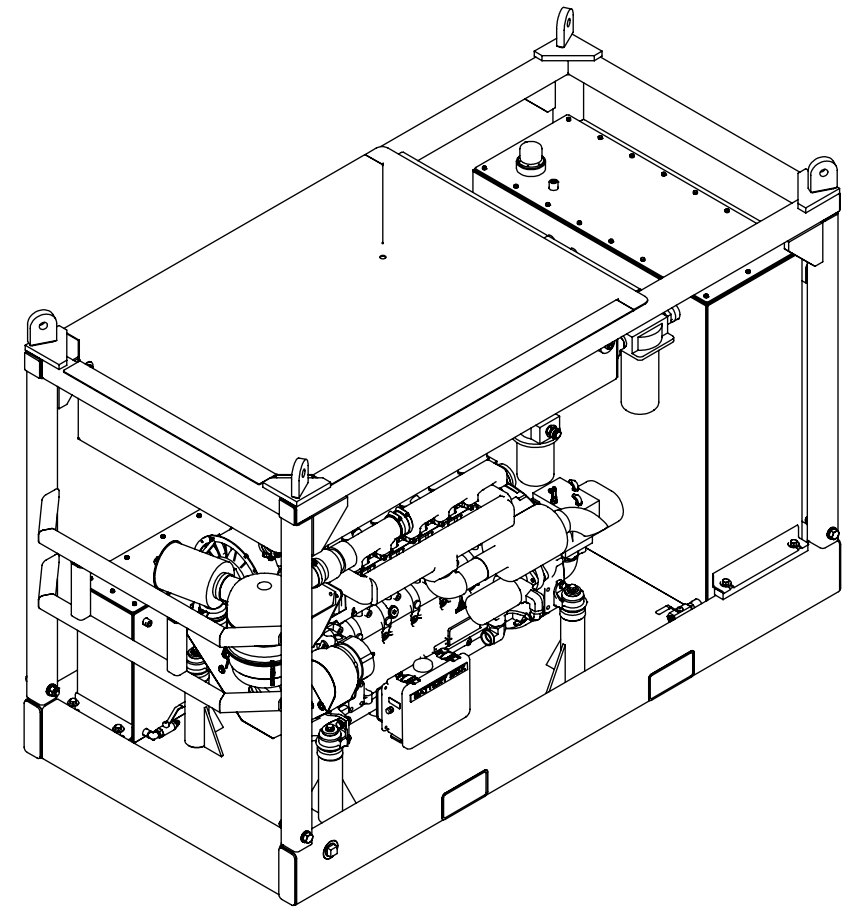


REVISIONS				
REVISION	ECO NUMBER	ECO DESCRIPTION	ECO COMPLETED BY	ECO COMPLETED DATE
3	ECN-13-0420	REMOVED KITS, CALLED OUT EACH IND PART ON BOM	RC	2013
A	ECN16-0012	ADDED EMISSIONS EQUIPMENT, (2) 1&12-G; ADDED HOSES; ADDED BATTERY BOX ASSEMBLY; REMOVED (1) 1441, (2) 20 FJ HOSE END FITTING, (1) 1446, (4) 16 FJ HOSE END FITTING	M.BUDDEN	8/16/2016
B	17-0101	ADDED GA SPECIFICATIONS; REPLACE 7040HL-011 W/ 7040HL-011-02	M.BUDDEN	5/18/2017

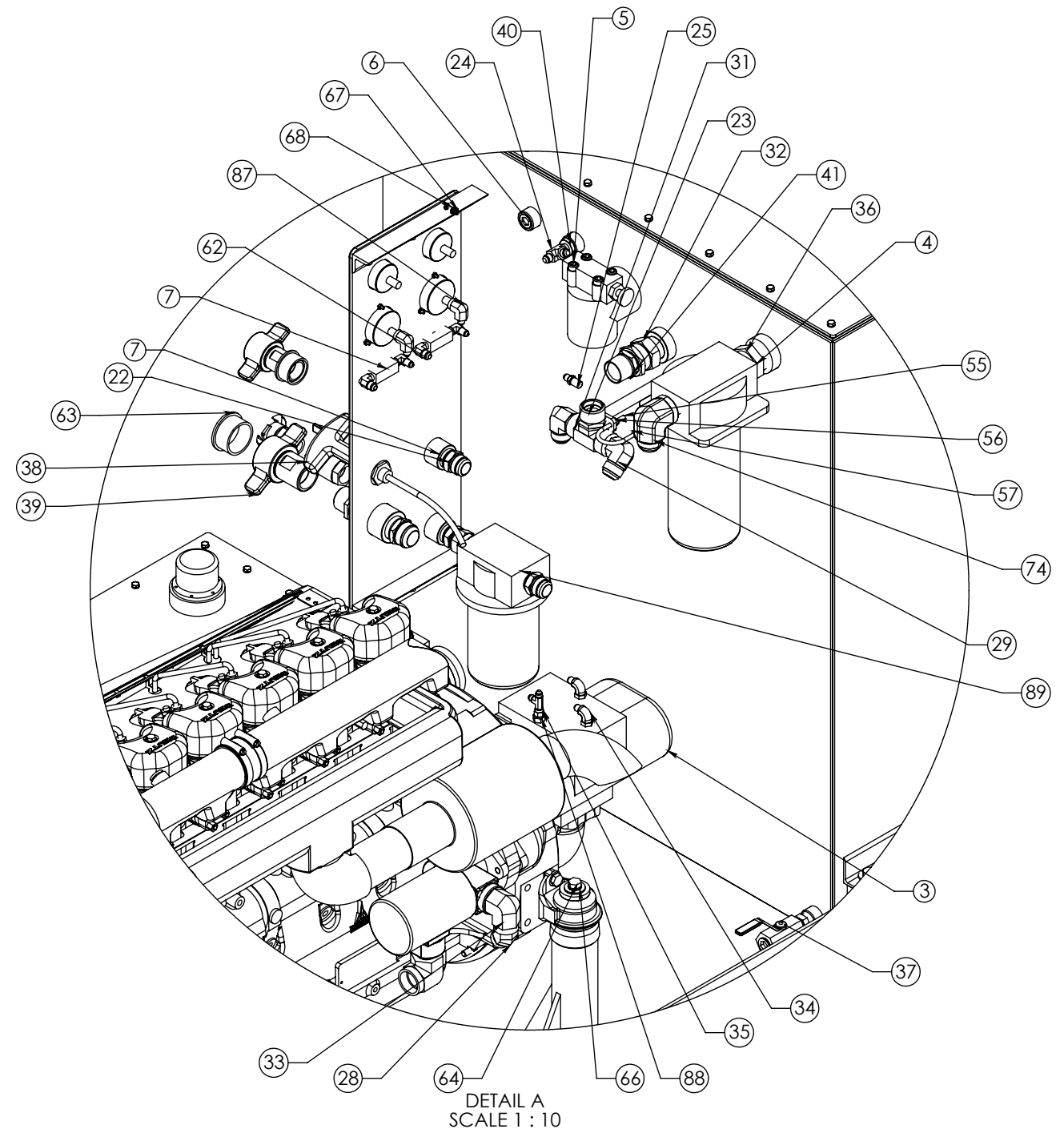
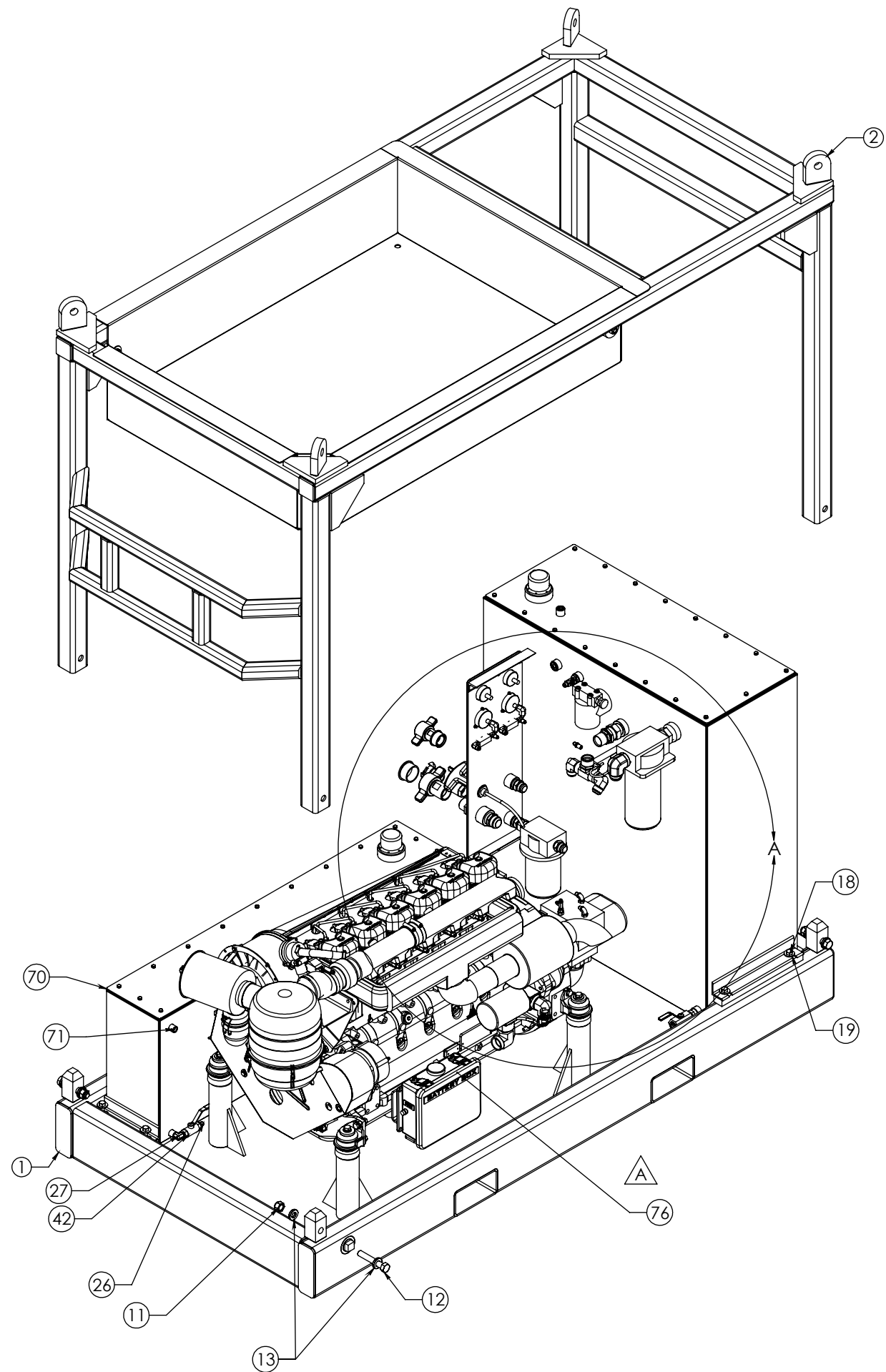
UNLESS OTHERWISE SPECIFIED:		PROPRIETARY STATEMENT		DESCRIPTION	
1. DIMENSIONS ARE IN INCHES		THIS DOCUMENT IS THE PROPERTY OF MCCOY CORPORATION AND IS CONSIDERED CONFIDENTIAL. THIS INFORMATION MAY NOT BE USED, DISCLOSED, COPIED, OR REPRODUCED IN ANY FORM, WITHOUT THE EXPRESS WRITTEN CONSENT OF MCCOY CORPORATION.		ASSEMBLY, POWER UNIT, DIESEL, 6 CYLINDER, AIR START	
2. TOLERANCES: ANGULAR ± 1°		DRAWN CLINT MUSEMECHE		SIZE PART NO.	
FRACTIONAL ± 1/16		CHECKED DDT		B DPU660-05	
TWO PLACE DECIMAL ± 0.02		APPROVED DAN BANGERT		MATERIAL	
THREE PLACE DECIMAL ± 0.005		THIRD ANGLE PROJECTION		N/A	
3. IDENTIFY P/N & MAIL P.O. USING 1/8 TO 1/4 ETCHED LETTERS, DENOTED BY "X"		WEIGHT 3254 LBS.		REV B	
4. REMOVE BURRS & SHARP EDGES WITH 1/64x45° MAX				SHEET 1 OF 5	
5. MACHINED FILET RADII SHALL BE 1/32					
6. FINAL SURFACE ROUGHNESS AVG. (Ra) SHALL BE ≤ 250 MICROINCHES					
7. DIMENSIONS IN PARENTHESES ARE CRITICAL DIMENSIONS; 100% INSPECTION REQUIRED					
8. A TRIANGLE DENOTES A REVISION					
9. INTERPRET DRAWING PER ASME Y14.5-2009					

RELEASED FOR PRODUCTION

ITEM	QTY.	P/N	DESCRIPTION	ITEM	QTY.	P/N	DESCRIPTION	ITEM	QTY.	P/N	DESCRIPTION
1	1	DSKD-02	WELDMNT, SKID	45	1	PN24-33T	PIPE NIPPLE, 1 1/2 MNPT X 33, SCH 80	87	2	1653	FITING, 1/4 FNPT, 1/4 MJIC, ELBOW
2	1	DBSKT-007	ASSEMBLY, HOSE BASKET	46	1	V500P-16	VALVE, BALL, BRASS, 1" NPT, PARKER# V500P-16	88	1	4-6F5OX-S	FITTING, 3/8 MORB, 1/4 MJIC, STRAIGHT
3	1	GNSH20-20	GEAR PUMP, DOUBLE, HI/LOW VALVE	47	1	1391	FITTING, STREET ELBOW, LOW PRESSURE, 3/4	89	1	F6L914-S2	WATER SERPARATOR, VENDOR PART NUMBER F329-08
4	1	DPU660-S1	BLOCK, FILTER	48	1	1393	FITTING, STREET ELBOW, LOW PRESSURE, 1 1/4 IN				
5	1	2070	VALVE, RELIEF	49	1	PN40-C	PIPE NIPPLE, 2 1/2 X CLOSE, SCH. 80				
6	1	HRES-150	HYDRAULIC, RESERVOIR, 150 GAL	50	1	40SFO	FLANGE, SPLIT, 2 1/2", CODE 61				
7	1	7042HL-013	ASSEMBLY, BULKHEAD PLATE	51	1	BSE-25HB-25S-11	ADAPTER, 2 1/2 , 2 1/2, 90				
8	1	7040HL-011-02	ASSEMBLY, THROTTLE CYLINDER, DIESEL ENGINE, 6 CYLINDER	52	1	W43-16-24U	FITTING, 1 1/2IN CODE 61 X 1IN FNPT, STRAIGHT				
9	2	D40H-75-300-SL	CLAMP, T-BOLT 2 1/2	53	1	1610	FITTING, 3/4 MNPT, PLUG				
10	1	UM-100-M	FITTING, MALE, FOOT	54	1	HYDOIL	LETTER, CLEAR, ADHESIVE				
11	4	1167	NUT, NYLOCK, 3/4-10, STEEL, GR8, ZINC	55	1	1014	U-BOLT, 1/4-20, 1 3/4 ID				
12	4	PU-1202	SCREW, HEX, 3/4-10 X 4 1/2	56	2	100	NUT, HEX, 1/4-20, GR8				
13	8	PU-280	WASHER, FLAT, 3/4, 1 1/2, .216, GR8	57	2	101	WASHER, LOCK, 1/4, GR8				
14	1	PU2500-H19	SUCTION STRAINER, SCHROEDER, 2 1/2"	58	1	1611	FITTING, 1 MNPT, PLUG				
15	1	1448	FITTING, PIPE NIPPLE, CLOSE, 2 1/2" SCH. 40	59	2	1576	FITTING, 1/4 MNPT, 1/4 MJIC, ELBOW				
16	2	1462	FITTING, NIPPLE, HEX, 1"	60	1	1609-A	PLUG, FLUSH, 1/2				
17	1	1463	NIPPLE, HEX, 1 1/4"	61	1	3-4HHP-S	FITTING, HEX PLUG, 3/4				
18	8	1111	SCREW, HEX, 1/2-13, 1 1/4, STEEL, GR8, ZINC	62	1	1576-A	FITTING, 1/4 MNPT, 3/8 MJIC, ELBOW				
19	11	1102	WASHER, FLAT, 1/2, STEEL, GR08	63	1	1670	FITTING, QUICK DISCONNECT, PLUG, DUST, FEMALE, 1 1/4				
20	1	1440	FITTING, QUICK DISCONNECT, 1 FML-WING TYPE	64	4	1260	SCREW, HEX HEAD, 1/2-13 X 5 1/4, GR8				
21	1	1461	FITTING, 3/4 MNPT, 3/4 MNPT, HEX NIPPLE	65	1	1102-A	FLATWASHER 1/2 GR8 - NARROW				
22	3	1469	FITTING, 1 MNPT, 1 MJIC, STRAIGHT	66	4	1103	LOCKWASHER, 1/2				
23	1	1499	FITTING, REDUCER BUSHING, 1 1/4 X 1 NPT	67	6	1737	NUT, NYLOCK, 1/4-20 SS				
24	1	1527	FITTING, TEE, 3/8" MNPT X 3/8" MJIC X 3/8" MJIC	68	6	SST-18	SCREW, BUTTON HEAD, 1/4-20 X 1, STAINLESS				
25	1	1562	FITTING, 1/4 MNPT, 1/4 MJIC, STRAIGHT	69	1	SBE-25HB-25SM-11	FITTING, 2 1/2 HOSE BARB X 2 1/2, CODE 61 FLANGE ADAPTER, 90 DEG				
26	2	1570	FITTING, 3/8 MNPT, 3/8 MJIC, STRAIGHT	70	1	DT-45G-01	ASSEMBLY, DIESEL TANK, BOLT, TOP				
27	2	1579	FITTING, 3/8 MNPT X 3/8 MNPT 90 DEG	71	1	1609	PLUG, FLUSH, 3/8 NPT				
28	2	16VTX-S	FITTING, 1 MNPT, 1 MJIC, 45	72	1	DIESEL	LETTER, CLEAR, ADHESIVE				
29	2	1617	FITTING, 1 MNPT, 1 MJIC, ELBOW	73	2	1612-G	FITTING, PLUG, 1 1/2 NPT				
30	1	1666	FITTING, QUICK DISCONNECT, PLUG, DUST, FEMALE, 1	74	1	20-24CTXS	FITTING, ELBOW, 90 DEG., 1 1/2" MNPT X 1 1/4" MJIC				
31	1	1669	FITTING, TEE, BRANCH, 1 MNPT, 1 FNPT	75	1	24CD	FITTING, ELBOW, 1 1/2 NPT, STREET EL				
32	1	20F6X	FITTING, SWIVEL, 1 1/4 MNPT, 1 1/4 FJIC	76	1	1004402	ASSEMBLY, DIESEL BATTERY				
33	1	3_4 X 1 CDS	FITTING, 3/4 MNPT , 1 FNPT, ELBO	77	1	76052	SWITCH, EMMISION, HOBBS , MFG PN 76052				
34	2	4-6 C5OX	FITTING, MALE #6 SAE, X MALE 4 JIC , ELBO	78	1	1594	FITTING, 1/4, TEE				
35	1	4R6X-S	FITTING, 1/4 FJIC SWIVEL, 1/4 MJIC, RUN TEE	79	1	DPU660EA	WELDMNT, DIESEL ENGINE, 6 CYLINDER				
36	1	1504	FITTING, PIPE NIPPLE, HEX, 1 1/2"	80	1	H20-45-FJFJS	HOSE, 1 1/4, 45 LONG, SINGLE WIRE, FJIC X FJIC				
37	1	V500P-12	VALVE, BALL, BRASS, 3/4" NPT, PARKER# V500P-12	81	1	H16-23-FJFJ	ASSEMBLY, HOSE, 1 FJIC X 23, PARKER 45ITC TOUGH COVER				
38	1	F6L914-S1	PULL HANDLE, EMERGENCY	82	1	H16-720-FJFJS	HOSE, 1 X 72 LONG, FJIC X FJIC, SINGLE WIRE				
39	1	1445	FITTING, QUICK DISCONNECT, WING TYPE 1 1/4 FEMALE	83	1	H16-21-FJFJ	ASSEMBLY, HOSE, 1 FJIC X 21, PARKER 45ITC TOUGH COVER				
40	1	1494	FITTING, BUSHING, REDUCER, 3/4 MNPT X 3/8 FNPT	84	2	ASR115-6-5	FUEL HOSE, 3/8 X 5FT				
41	2	1470	FITTING, 1 1/4, MNPT, 1 1/4, MJIC, STRAIGHT	85	1	TRG-1775-M	GAUGE, FUEL				
42	2	1478	VALVE, BALL, BRASS, 3/8 FNPT, 3/8 FNPT	86	1	16F6X	FITTING, SWIVEL, 1 MNPT, 1 FJIC				
43	1	PN12-20T	PIPE NIPPLE, 3/4 20 MNPT, SCH80								
44	1	PN20-33T	PIPE NIPPLE, 1 1/4 X 33 MNPT, SCH 80								

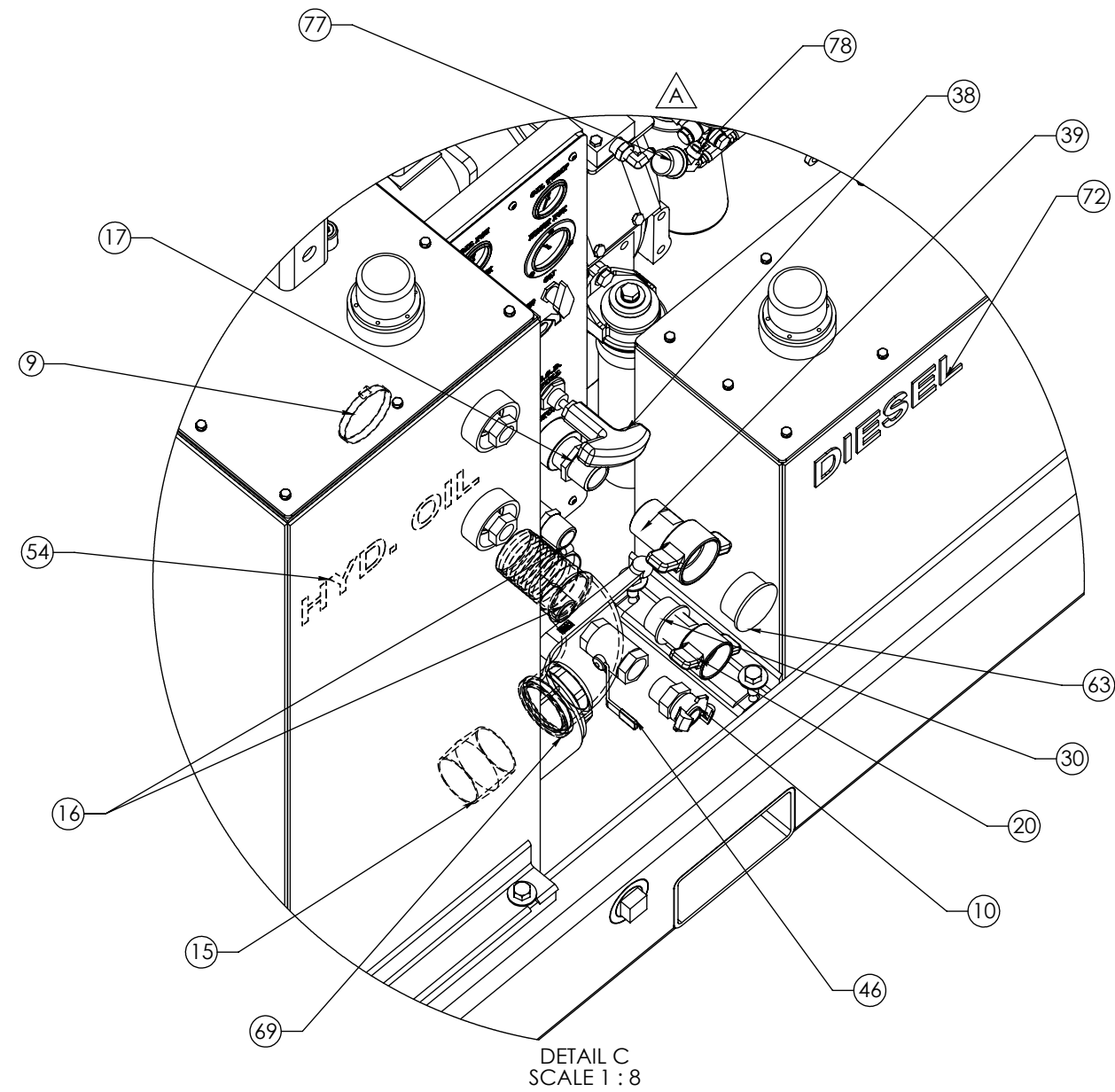
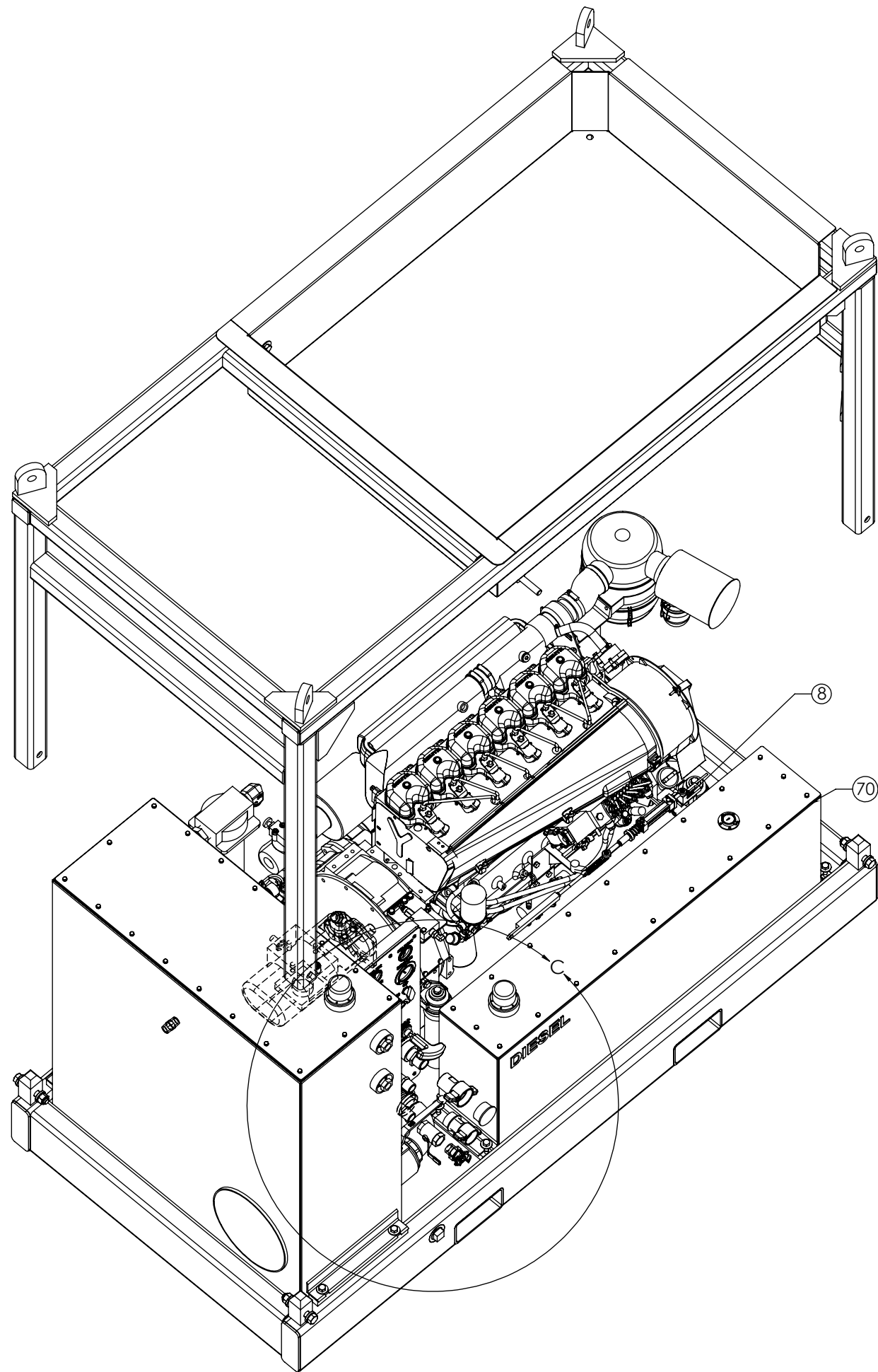


DESCRIPTION			
ASSEMBLY, POWER UNIT, DIESEL, 6 CYLINDER, AIR START			
SIZE	PART NO.	REV	
B	DPU660-05	B	
MATERIAL		SHEET 2 OF 5	
N/A			

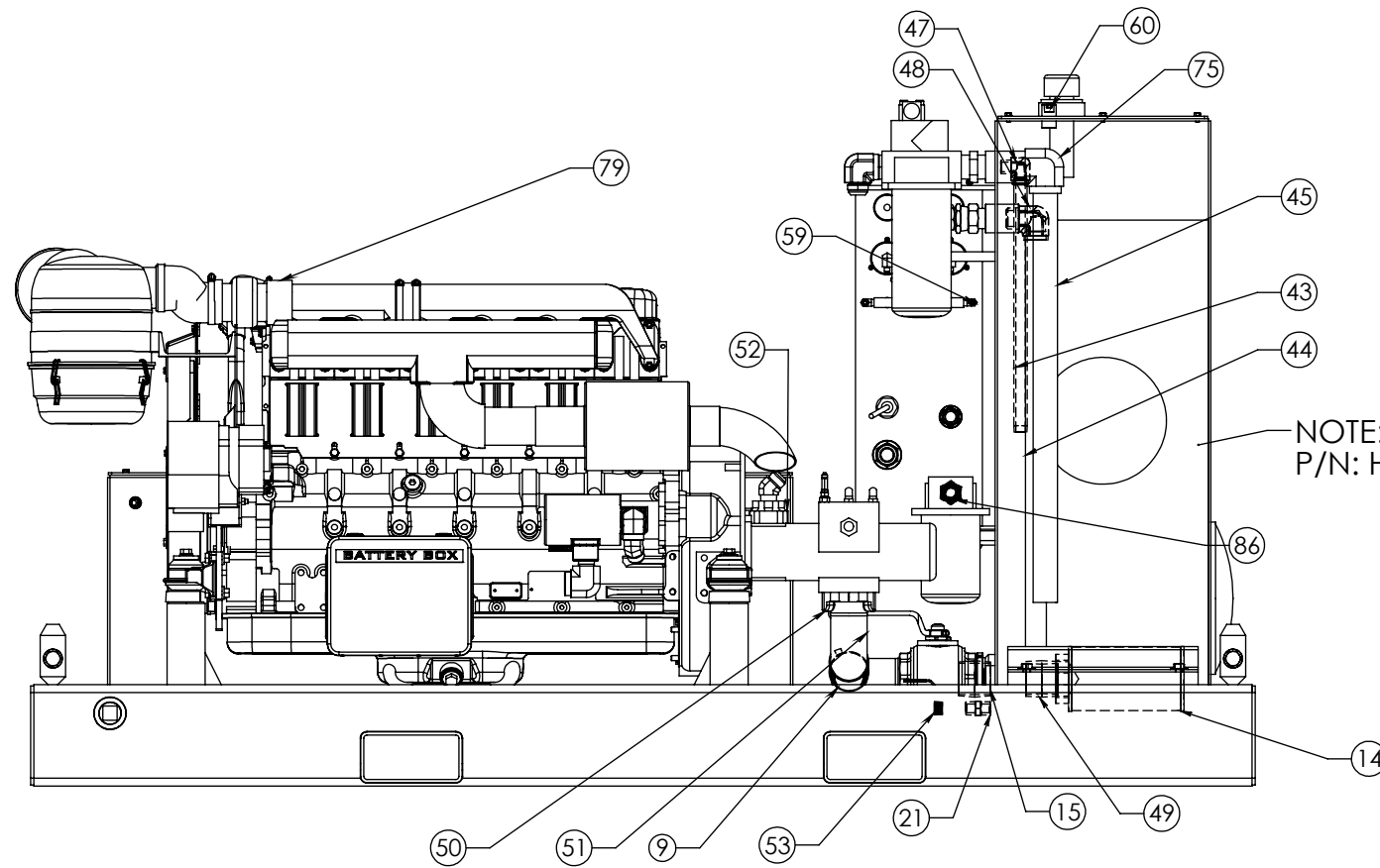
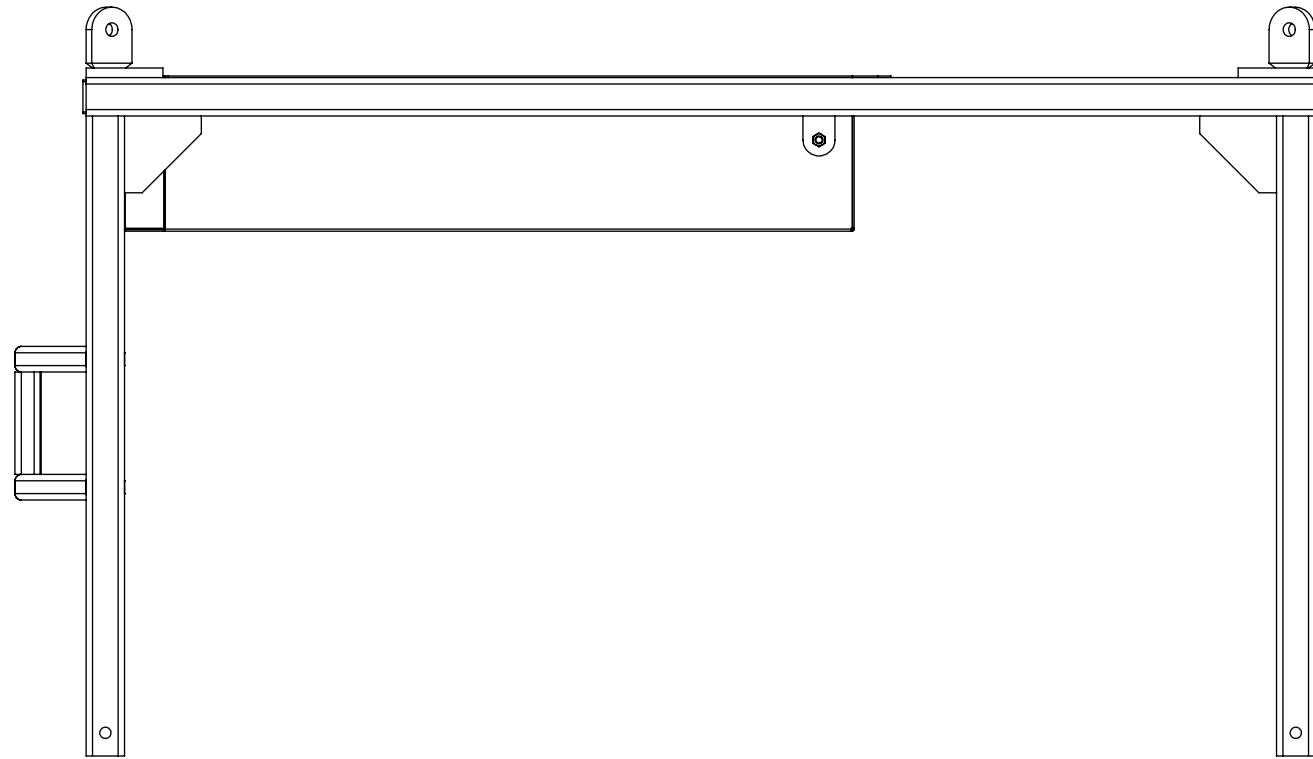


DESCRIPTION		<b>MCCOY</b> GLOBAL	
ASSEMBLY, POWER UNIT, DIESEL, 6 CYLINDER, AIR START			
SIZE	PART NO.	REV	
B	DPU660-05	B	
MATERIAL	N/A	SHEET 3 OF 5	





DESCRIPTION			
ASSEMBLY, POWER UNIT, DIESEL, 6 CYLINDER, AIR START			
SIZE	PART NO.	REV	
B	DPU660-05	B	
MATERIAL	N/A	SHEET 4 OF 5	



NOTE:  
P/N: HRES-150-S1C HIDDEN FOR CLARITY

DESCRIPTION			
ASSEMBLY, POWER UNIT, DIESEL, 6 CYLINDER, AIR START			
SIZE	PART NO.	DPU660-05	REV B
MATERIAL	N/A	SHEET 5 OF 5	