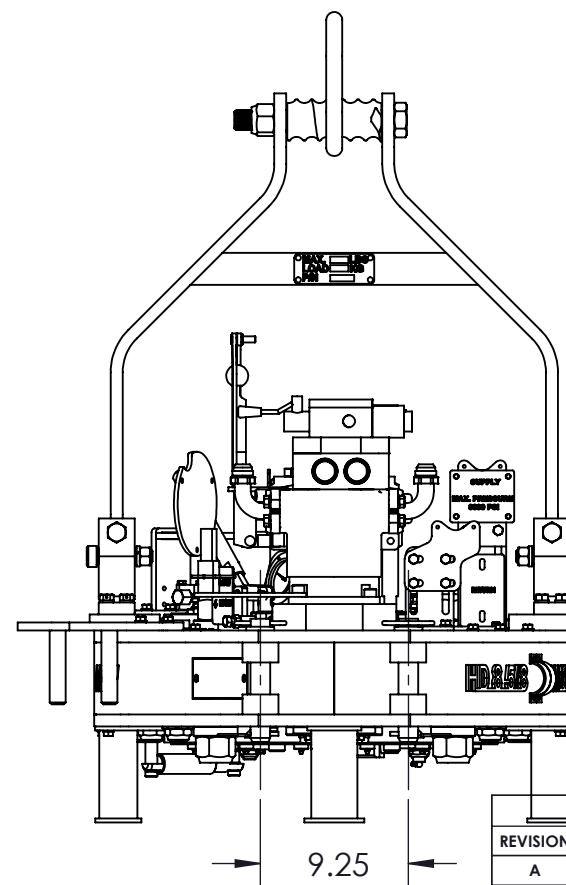
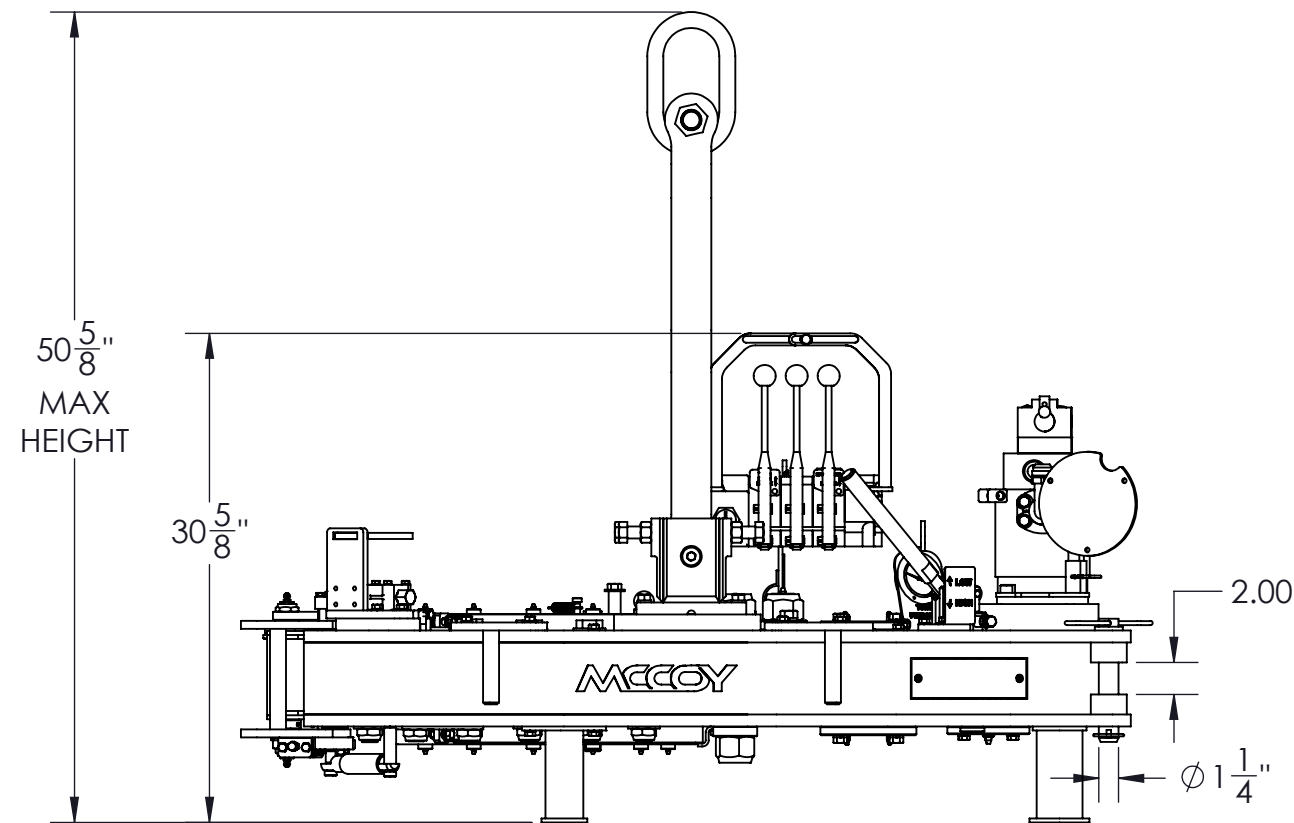


TONG SPECIFICATION		
MAX TORQUE (FT-LBS/N·M)	35,000	47,460
ARM LENGTH (INCH/CM)	36.0	91.4
MASS (LBS/KG)	1,500	681
TORQUE (FT-LBS/N·M, ESTIMATED)		
AT PRESSURE (PSI/BAR):	3,000	207
Hi/Full	7,000	9,492
Lo/Full	35,000	47,460
Hi/Half	3,500	4,746
Lo/Half	17,500	23,730
SPEED (RPM, ESTIMATED)		
AT FLOW RATE (GPM/LPM):	60	227
Hi/Full	54.9	
Lo/Full	11.0	
Hi/Half	109.8	
Lo/Half	22.0	
JAW SIZE RANGE (INCH)		
FROM/TO	2 3/8	8 5/8



REVISIONS				
REVISION	ECN NUMBER	ECN DESCRIPTION	ECN COMPLETED BY	ECN COMPLETED DATE
A	N/A	INITIAL RELEASE	N/A	N/A
B	18-0076	ADD (1) 1005264, (1) 1005265, (1) 02-9022; REMOVE (1) 02-E0204, (1) 101-0021; REPLACE (2) 09-1054 W/ (2) 09-1046	M.BUDDEN	8/10/2018
C	ECN20-0020	ADDED (1) 1441, (1) 1442, (1) 1446, (1) 1443	A. LOUVIERE	03/02/2020

UNLESS OTHERWISE SPECIFIED:		PROPRIETARY STATEMENT			
1. DIMENSIONS ARE IN INCHES 2. TOLERANCES: ANGULAR ± 1° FRACTIONAL ± 1/16 TWO PLACE DECIMAL ± 0.02 THREE PLACE DECIMAL ± 0.005 3. IDENTIFY P/N & MAIL P.O. USING 1/8 TO 1/4 ETCHED LETTERS; DENOTED BY "X" 4. REMOVE BURRS & SHARP EDGES WITH 1/64x45° MAX 5. MACHINED FILET RADI SHALL BE 1/32 6. FINAL SURFACE ROUGHNESS AVG. (Ra) SHALL BE ≤ 250 MICROINCHES 7. ○ DENOTES CRITICAL DIMENSION; 100% INSPECTION REQUIRED 8. A TRIANGLE DENOTES A REVISION 9. INTERPRET DRAWING PER ASME Y14.5-2009		THIS DOCUMENT IS THE PROPERTY OF MCCOY CORPORATION AND IS CONSIDERED CONFIDENTIAL. THIS INFORMATION MAY NOT BE USED, DISCLOSED, COPIED, OR REPRODUCED IN ANY FORM, WITHOUT THE EXPRESS WRITTEN CONSENT OF MCCOY CORPORATION.			
DRAWN	S.PANCHAL	03/29/2017	DESCRIPTION		REV C
CHECKED	R.RAHMAN	01/29/2018	ASSEMBLY, TONG, 8625-35K		
APPROVED	R.RAHMAN	01/29/2018	SIZE	PART NO.	REV C
THIRD ANGLE PROJECTION			B	80-0605-10	
WEIGHT			MATERIAL		SHEET 1 OF 2
1492.22 LBS.			N/A		

RELEASED FOR PRODUCTION

ITEM	Qty.	P/N	DESCRIPTION
1	1	80-0600	ASSEMBLY, BASE TONG, HD8625
2	1	DVG35-M-D-D	ASSEMBLY, DVG35 VALVE
3	2	02-9217	FITTING, 1-1/4", SPLIT FLANGE KIT
4	1	1500-09-03A	WELDMENT, GAUGE, TORQUE
5	1	1500-09-04A	WELDMENT, HOLDER, GAUGE
6	1	101-1138	WELDMENT, COUPLING, INLET
7	2	101-0116	MOUNT, VALVE, HYDRAULIC
8	1	101-0022	PLATE, COUPLING, OUTLET
9	1	101-0023	PLATE, SUPPORT, HYDRAULIC
10	1	101-0277	PLATE, SUPPORT, HYDRAULIC
11	1	1050-150	BASE, MOUNT, MOTOR
12	1	87-0007	MOTOR, RINEER, 15 SERIES, 2 SPEED, 015 KEYED
13	1	997-A10-149	GEAR, MOTOR
14	1	02-0981	PIN, HITCH 0.148 X 2.938
15	1	02-0006	FITTING, GREASE, 1/8 NPT, 45°
16	2	02-9216	FITTING, FLANGE ELBOW #20 1 1/4", JIC 1"
17	2	02-9022	CHECK VALVE, 1/4 NPTF
18	1	10-0062	VALVE, RELIEF, 2500 -3500 PSI
19	1	101-0727	MANIFOLD, HYDRAULIC, DOOR SWITCH
20	2	08-1625	CARTRIDGE, PILOT TO OPEN CHECK, LKHCXDN
21	2	101-5308	PLATE, MOUNT
22	1	10-9035	VALVE, DIRECTIONAL CONTROL, WITH DETENT KIT
23	1	1483-500-00-07	BRACKET, MOUNTING, GAUGE
24	1	BAC-5M25RCFF	GAUGE, 2 1/2, 5K, 1/4 MNPT
25	1	101-9066	WELDMENT, BASE, VALVE GUARD, DVG
26	1	101-6860	WELDMENT, VALVE GUARD
27	2	02-E0199	CLAMP, PIPE, 2"
28	1	101-5589	TAG, INLET
29	1	101-5588	TAG, RETURN
30	2	02-E0186	CLAMP, PIPE, 1
31	1	02-E0187	CLAMP, PIPE, 1 1/4
32	4	101-3939	SHAFT, SUPPORT, ROLLER
33	4	02-0097	FITTING, GREASE, 1/4-28
34	1	101-0162	WELDMENT, LEG, LH
35	1	101-0163	WELDMENT, LEG, RH
36	1	997-D8-160A	WELDMENT, LEG
37	2	02-0225	ASSEMBLY, PIN, HITCH, 1 1/4, 6 1/4
38	1	09-1048	BOLT, HEX, 3/8-16, 1 1/4, GR 8, ZINC, FULLY THREADED
39	2	09-1044	BOLT, HEX, 3/8-16, 3/4, GR 8, ZINC, FULLY THREADED
40	2	09-1184	BOLT, HEX, 1/2-13, 4 1/2, GR 8, ZINC, FULLY THREADED
41	14	09-1046	BOLT, HEX, 3/8-16, 1, GR 8, ZINC, FULLY THREADED
42	8	09-5106	WASHER, SPRING LOCK, REGULAR, 3/8, 17/25, 0.035-0.125, STEEL, GR 8, ZINC
43	1	09-5122	WASHER, SPRING LOCK, REGULAR, 7/8, 1 15/32, 0.125-0.25, STEEL, GR 8, ZINC
44	1	HNUT 0.3750-16-D-N	
45	2	09-5110	WASHER, SPRING LOCK, REGULAR, 1/2, 43/50, 0.125-0.25, STEEL, GR 8, ZINC
46	4	09-5106	WASHER, SPRING LOCK, REGULAR, 3/8, 17/25, 0.035-0.125, STEEL, GR 8, ZINC
47	1	09-2166	SCREW, SOCKET CAP, SOCKET, 1/2-13, 1, STEEL, GR 8, ZINC
48	2	09-0234	SCREW, SOCKET CAP, SOCKET, 1/2-13, 2, STEEL, GR 8, ZINC
49	1	09-5125	Socket Head Cap Screw 1/2" NC x 7/8"
50	2	09-0358	PIN, DOWEL, HARDENED PRODUCTION, 5/16, 1 3/8, STEEL, GR 8, ZINC
51	1	01-0317	KEYSTOCK, 5/16 x 5/16, 1 1/2
52	2	09-0106	SCREW, SET, SOCKET, 3/8-16, 3/8, STEEL, GR 8, ZINC, FLAT POINT
53	6	09-5124	FLAT WASHER, 3/8" SAME AS 1025
54	4	09-5806	NUT, HEX, 3/8-16, STEEL, GR 8, ZINC, DOUBLE CHAMFER
55	2	09-5806	NUT, HEX, 3/8-16, STEEL, GR 8, ZINC
56	4	02-0471	1-1/8"
57	4	09-5120	WASHER, FLAT, NARROW, STEEL, ZINC, 1"
58	3	09-2170	SCREW, SOCKET CAP, SOCKET, 1/2-13, 1 1/2, GR 8, ZINC
59	1	09-0431	SCREW, SOCKET CAP, SOCKET, 7/8-9, 1.25, GR 8, ZINC
60	4	09-9167	NUT, NYLON-INSERT, HEX, 1-14 UNS, SLIM, GR8
61	1	1005265	BOLT, HEX HEAD, 1/2-13, 1/2, GR8

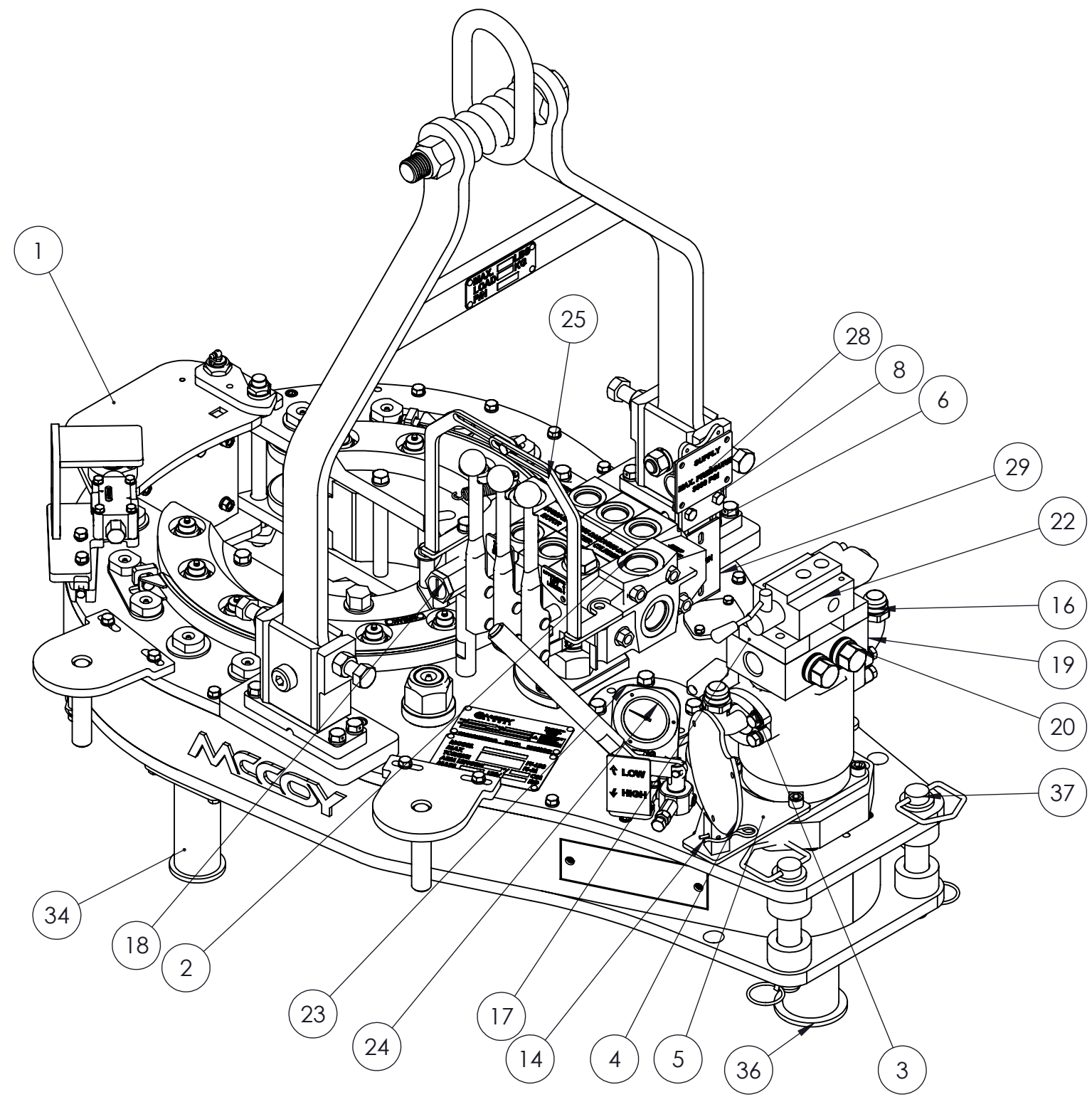
B

B

ITEM	Qty.	P/N	DESCRIPTION
62	1	1005264	WASHER, FLAT, 1/2 ID, 1.5 OD, .070 THICK
63	1	1441	FITTING, 1 MALE, NIPPLE, QUICK DISCONNECT
64	1	1442	CAP, QUICK DISCONNECT, 1
65	1	1446	FITTING, 1 1/4 MALE, NIPPLE, QUICK DISCONNECT
66	1	1443	CAP, QUICK DISCONNECT, 1 1/4

B

C



DESCRIPTION ASSEMBLY, TONG, 8625-35K	
SIZE PART NO. B 80-0605-10	REV C
MATERIAL N/A	SHEET 2 OF 2