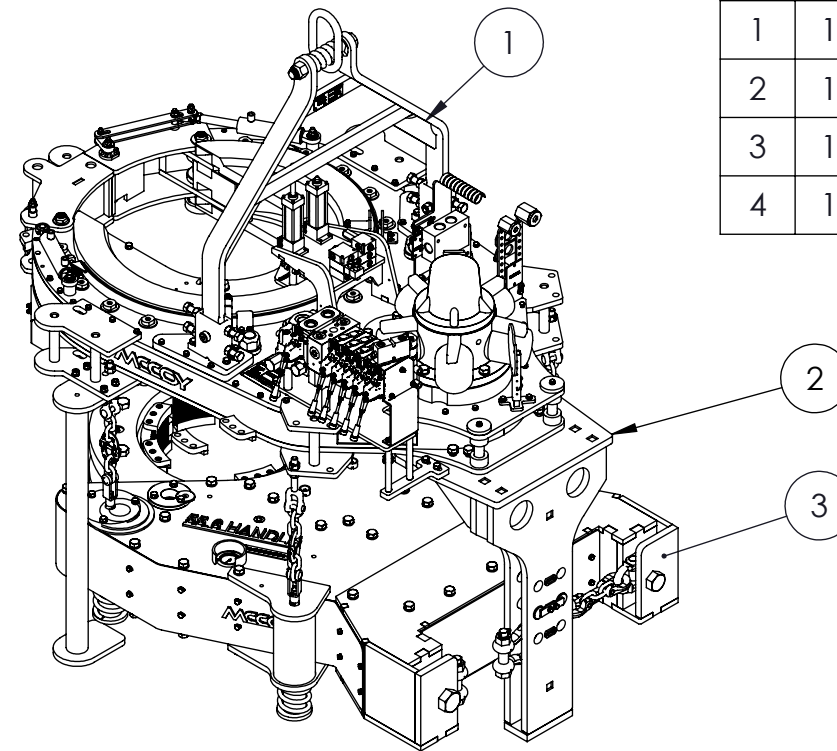
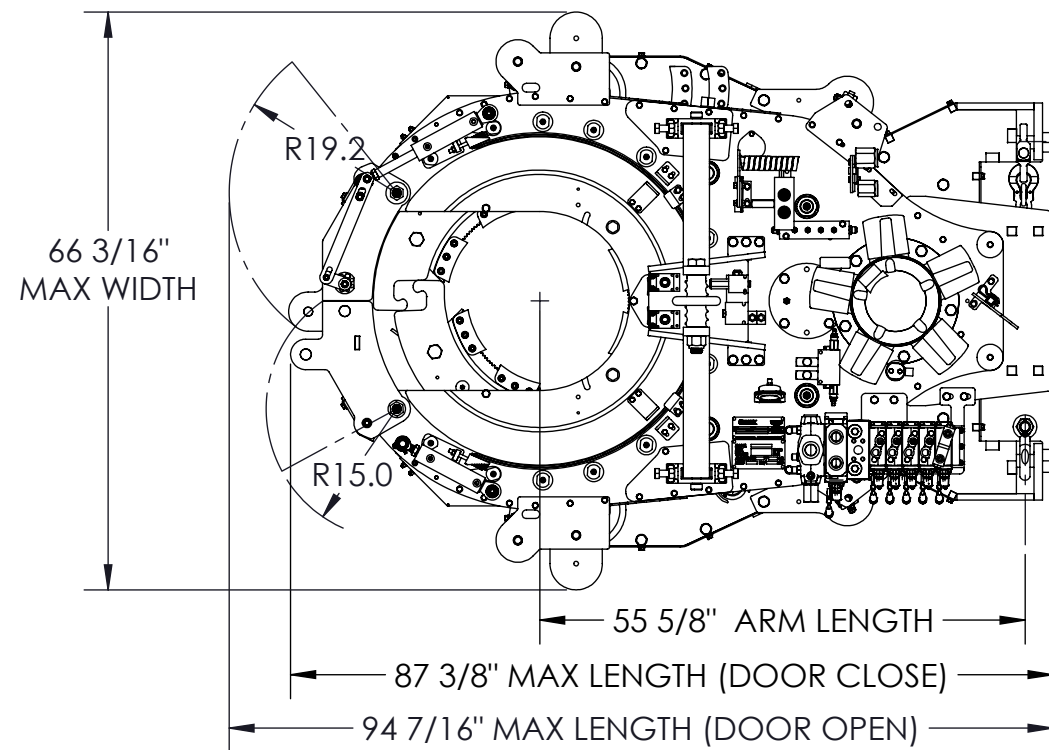
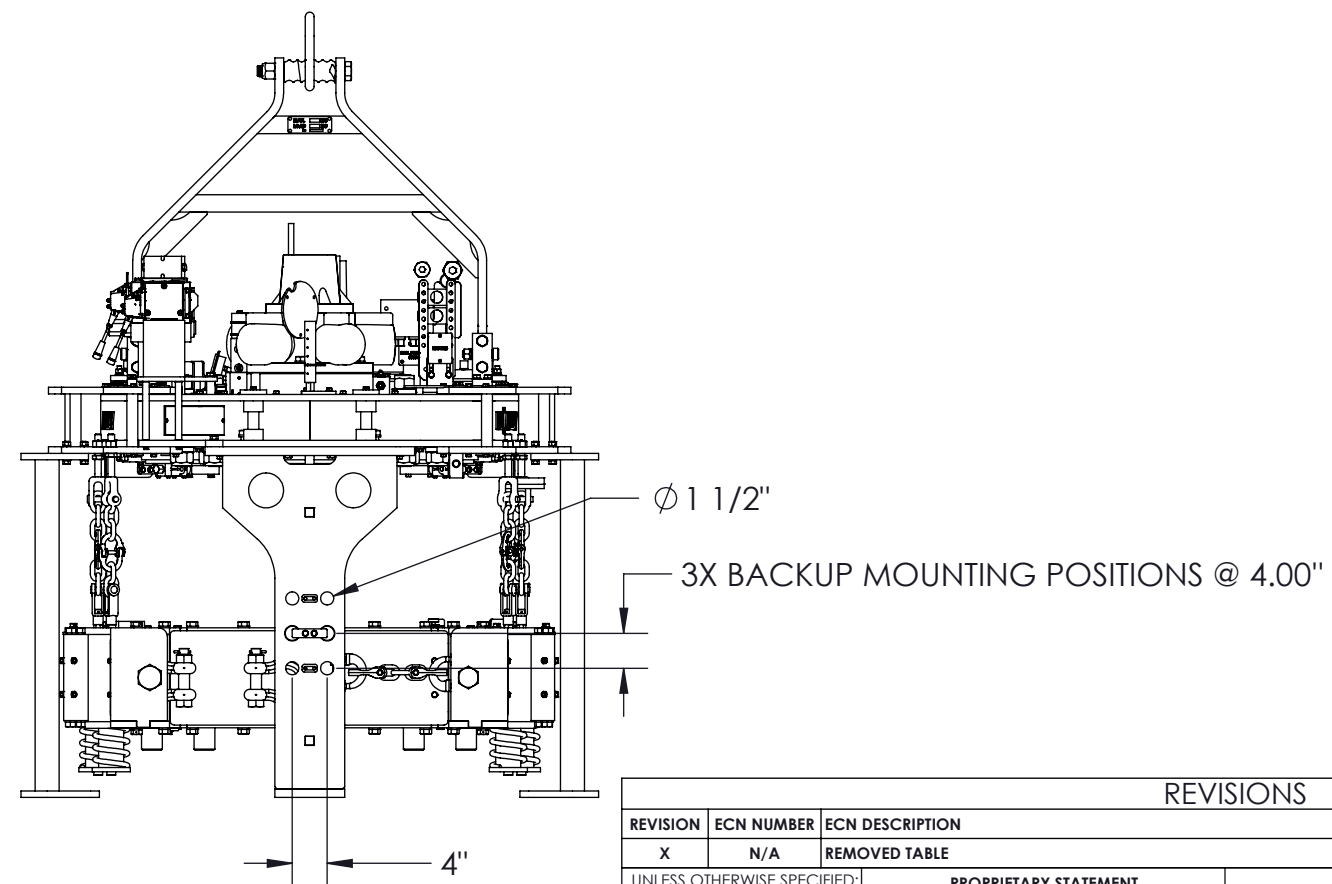
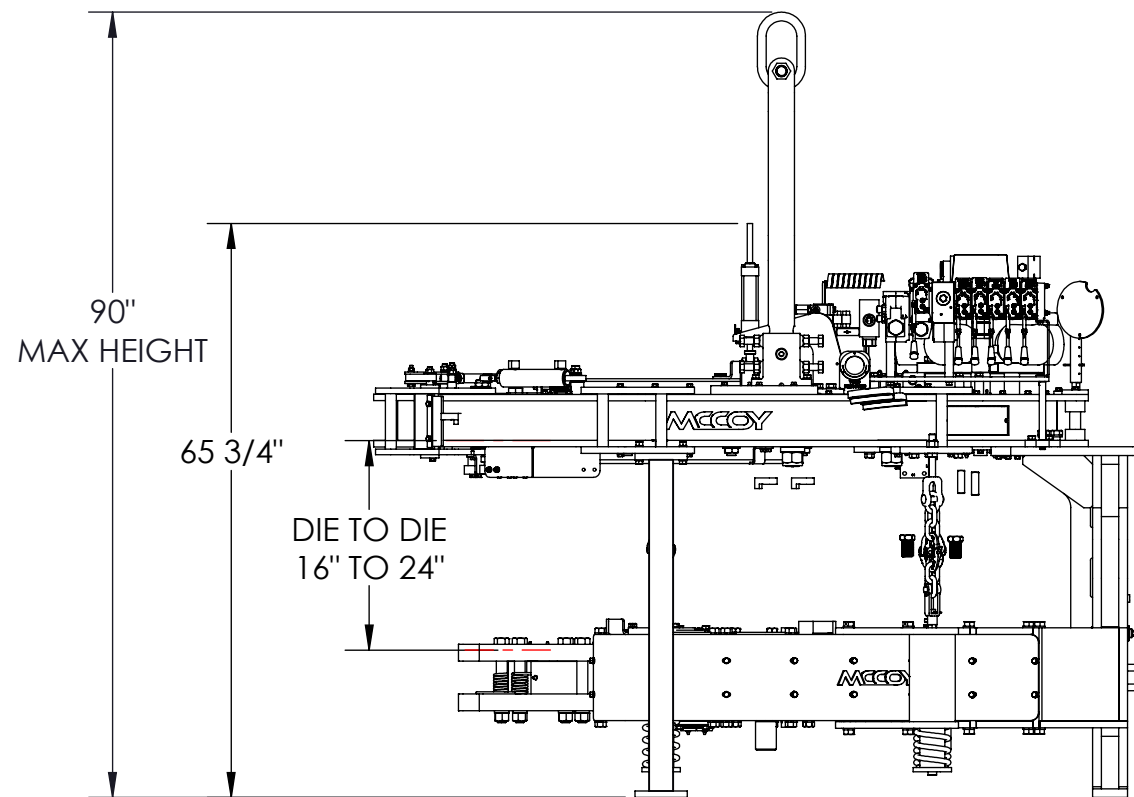


ITEM	QTY	P/N	DESCRIPTION
1	1	80-1302-7	ASSEMBLY, REMOTE TONG, 20000-50K
2	1	MK2050-4	MOUNTING KIT, 20000-50K X 21000 LJ BU, TENSION
3	1	BUCST21000-01	21" DP LJ TENSION BACKUP
4	1	101-9356	ASSEMBLY, BRACKET KIT, PROXIMITY SENSOR, 20000-50K



TONG SPECIFICATION		
MAX TORQUE (FT·LBS/N·M)	50,000	67,800
ARM LENGTH (INCH/CM)	55.6	141.2
MASS (LBS/KG)	7,250	3,292
TORQUE (FT·LBS/N·M, ESTIMATED)		
AT PRESSURE (PSI/BAR):	2,500	172
Hi/Full	7,639	10,358
Lo/Full	50,000	67,800
SPEED (RPM, ESTIMATED)		
AT FLOW RATE (GPM/LPM):	60	227
Hi/Full		50.7
Lo/Full		7.7



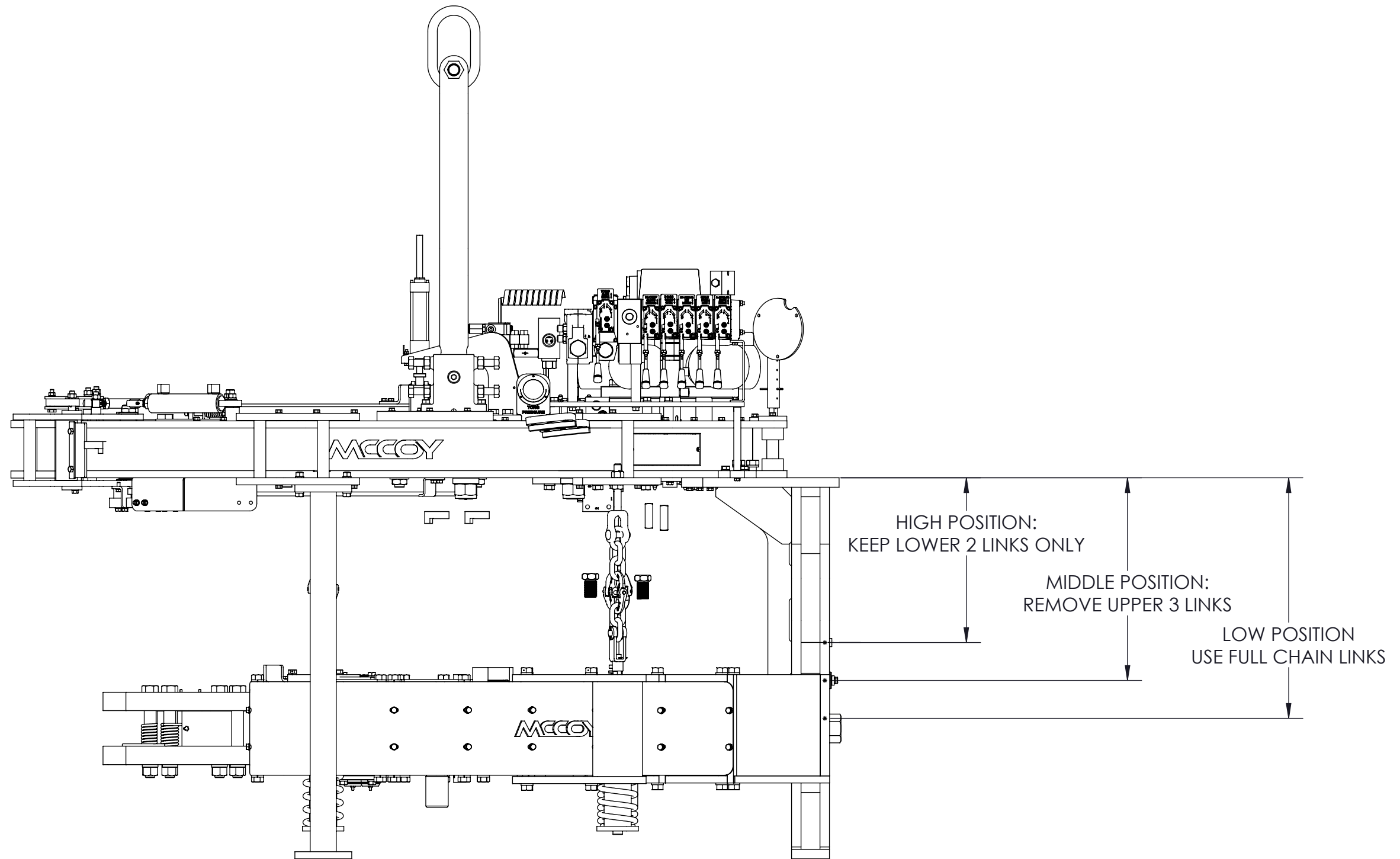
NOTE:
FRONT LEGS ARE INSTALLED TO STABILIZE THE TONG DURING SHIPPING.
THESE LEGS MUST BE REMOVED PRIOR TO USE
PAINT INSTRUCTION FOR THE FRONT LEGS (101-9343): THIS TEMPORARY
LEGS MUST BE PAINTED ORANGE

RELEASED FOR PRODUCTION

REVISIONS				
REVISION	ECN NUMBER	ECN DESCRIPTION	ECN COMPLETED BY	ECN COMPLETED DATE
X	N/A	REMOVED TABLE	R. RAHMAN	1/12/2018

<small>UNLESS OTHERWISE SPECIFIED:</small> 1. DIMENSIONS ARE IN INCHES 2. TOLERANCES: ANGULAR ± .1° FRACTIONAL ± 1/16 TWO PLACE DECIMAL ± 0.02 THREE PLACE DECIMAL ± 0.005 3. IDENTIFY P/N & MAIL P.O. USING 1/8 TO 1/4 ETCHED LETTERS, DENOTED BY "X" 4. REMOVE BURRS & SHARP EDGES WITH 1/64x45° MAX 5. MACHINED FILET RADI SHALL BE 1/32 6. FINAL SURFACE ROUGHNESS AVG. (Ra) SHALL BE ≤ 250 MICROINCHES 7. TRIANGLE DENOTES CRITICAL DIMENSION: 100% INSPECTION REQUIRED 8. A TRIANGLE DENOTES A REVISION 9. INTERPRET DRAWING PER ASME Y14.5-2009	PROPRIETARY STATEMENT <small>THIS DOCUMENT IS THE PROPERTY OF MCCOY CORPORATION AND IS CONSIDERED CONFIDENTIAL. THIS INFORMATION MAY NOT BE USED, DISCLOSED, COPIED, OR REPRODUCED IN ANY FORM, WITHOUT THE EXPRESS WRITTEN CONSENT OF MCCOY CORPORATION.</small>		DESCRIPTION 	
	DRAWN	S.PANCHAL	07/13/2017	ASSEMBLY, TONG, 20000-50K X 21000 LJ BU, TENSION, RD-RB-RS
	CHECKED	R.RAHMAN	07/17/2017	
	APPROVED	R.RAHMAN	07/17/2017	
THIRD ANGLE PROJECTION				
WEIGHT 7073.4 LBS.		SIZE PART NO. B 80-1310-21		REV A
MATERIAL N/A			SHEET 1 OF 2	

**NOTE:
ACHIEVE "LOW", "MIDDLE", & "HIGH" BACKUP HANGING POSTIONS
THRU ADD/REMOVE CHAIN LINKS & HAMMERLOCKS**



SCALE 1 : 12

DESCRIPTION ASSEMBLY, TONG, 20000-50K X 21000 LJ BU,	
SIZE PART NO. B	TENSION, RD-RB-RS 80-1310-21
MATERIAL	N/A
REV A	SHEET 2 OF 2