

PU2500E24-11 SPECIFICATIONS

POWER REQUIREMENT	3 PHASE 480 V 60 Hz	3 PHASE 380 V 50 Hz	3 PHASE 240 V 50 Hz
FULL LOAD / INRUSH CURRENT	82.4 A / 319 A	97.6A / 403 A	165 A / 638 A
MAXIMUM OPERATING PRESSURE	3000 PSI / 207 BAR		
MAXIMUM MOTOR OUTPUT	75 HP		
MAXIMUM HYDRAULIC FLOW	60 GPM		
HYDRAULIC RESERVOIR CAPACITY	140 GALLON / 530 L		
OIL REQUIREMENT	AW-68		
SPECIAL FEATURES	COOLER		
	TECH CABLE		
	EXPLOSION PROOF		

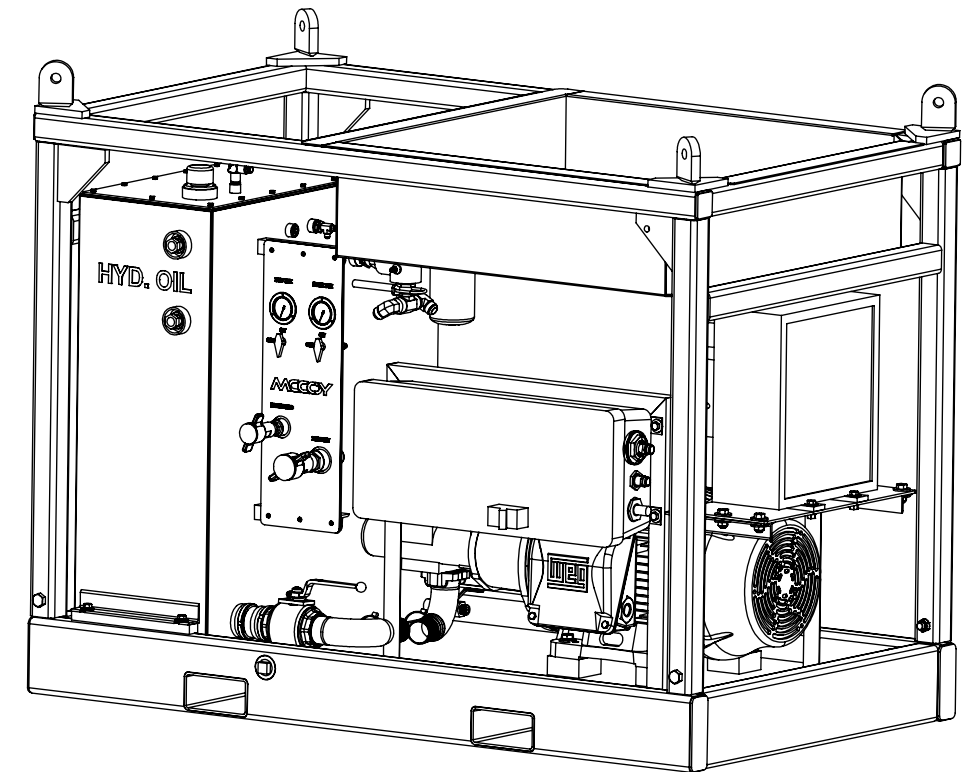
REVISIONS

REVISION	ECO NUMBER	ECO DESCRIPTION	ECO COMPLETED BY	ECO COMPLETED DATE
A	N/A	INITIAL RELEASE	N/A	N/A
B	17-0101	ADDED GA SPECIFICATION SHEET	M.BUDDEN	5/9/2017

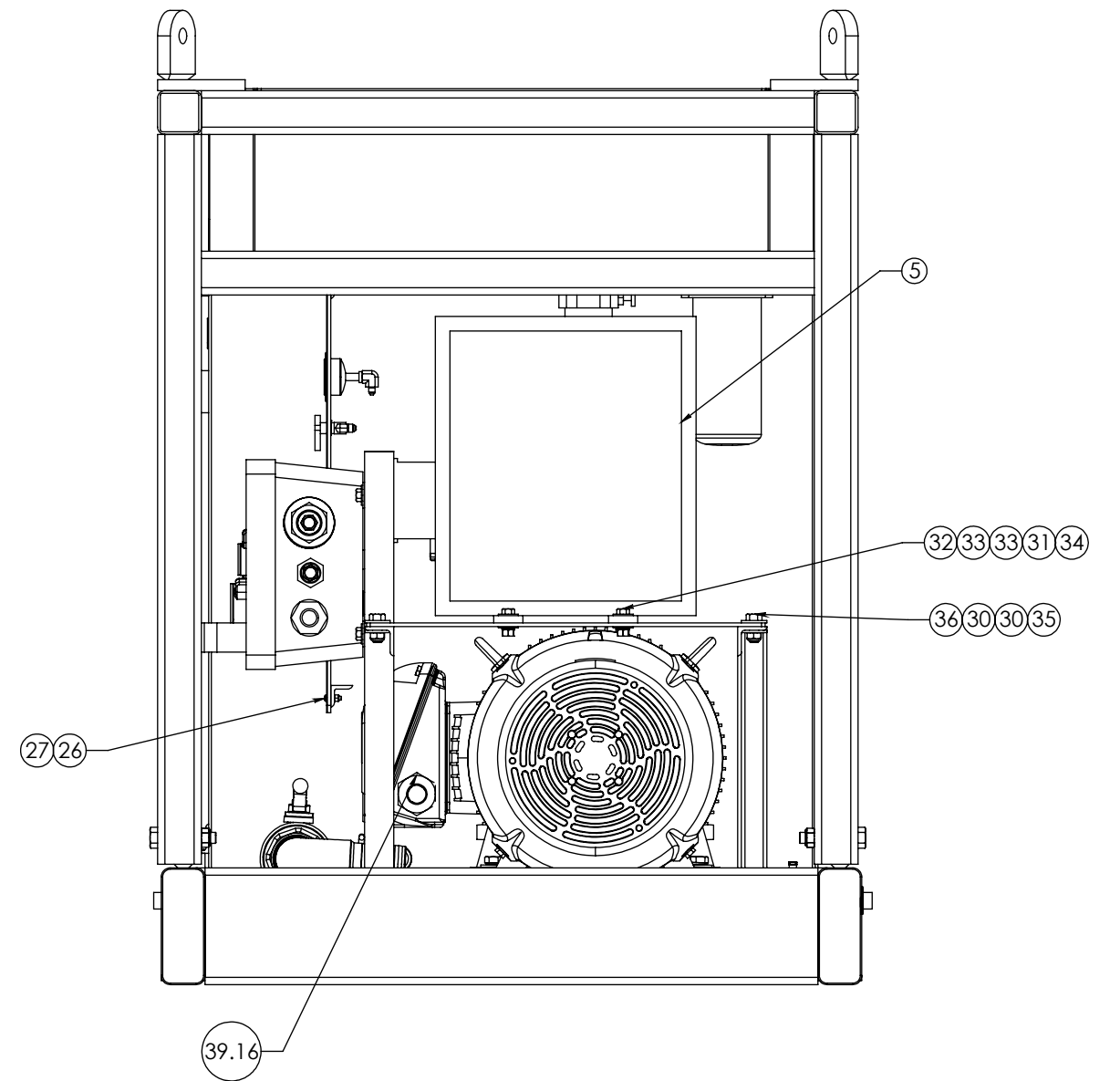
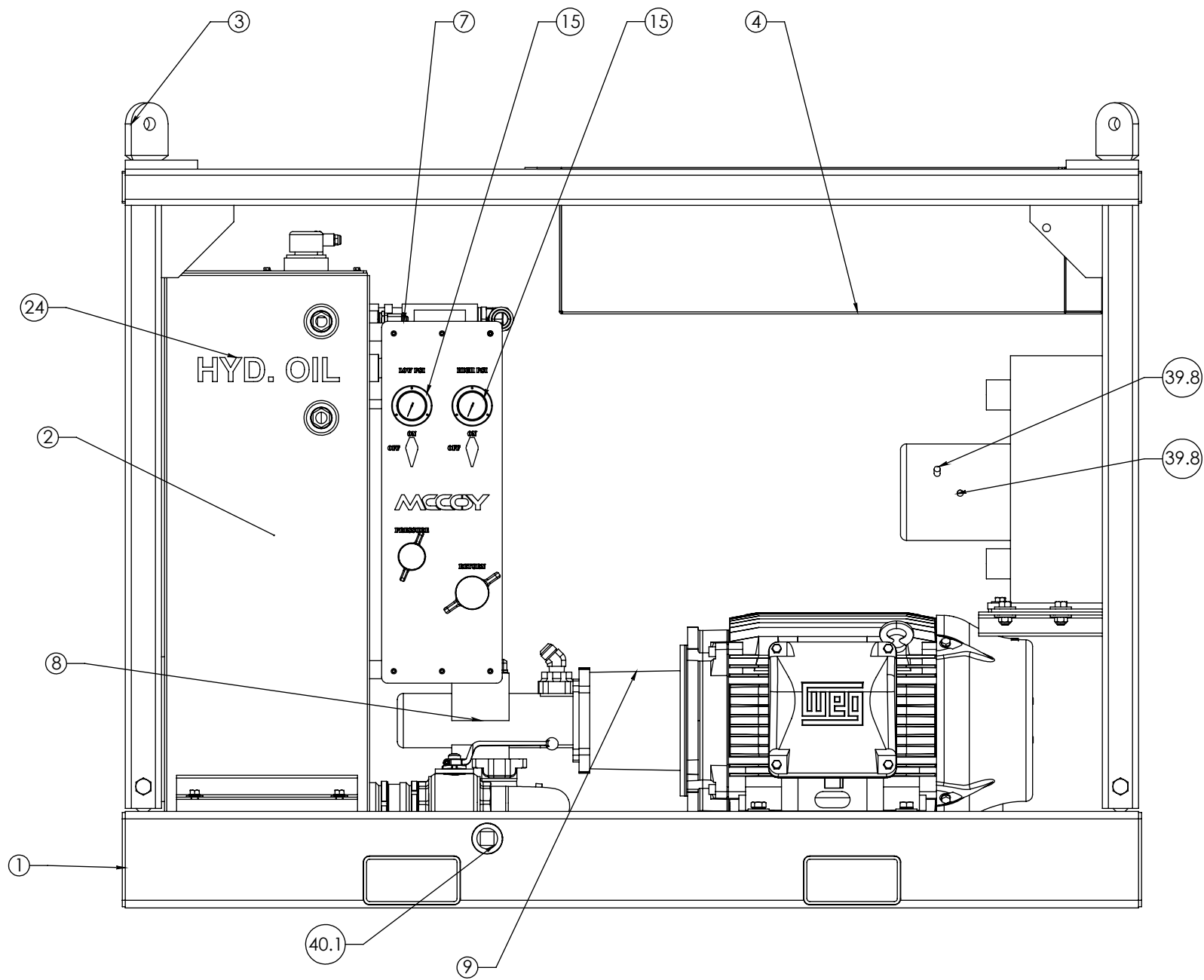
UNLESS OTHERWISE SPECIFIED:		PROPRIETARY STATEMENT THIS DOCUMENT IS THE PROPERTY OF MCCOY CORPORATION AND IS CONSIDERED CONFIDENTIAL. THIS INFORMATION MAY NOT BE USED, DISCLOSED, COPIED, OR REPRODUCED IN ANY FORM, WITHOUT THE EXPRESS WRITTEN CONSENT OF MCCOY CORPORATION.		DESCRIPTION MCCOY GLOBAL ASSEMBLY, POWER UNIT, ELECTRIC, WITH COOLER & TECH CABLE	
1. DIMENSIONS ARE IN INCHES	2. TOLERANCES: ANGULAR ± 1° FRACTIONAL ± 1/16 TWO PLACE DECIMAL ± 0.02 THREE PLACE DECIMAL ± 0.005	DRAWN	R.CENAC	12/26/2014	SIZE PART NO. B PU2500E24-11
3. IDENTIFY P/N & MAIL P.O. USING 1/8 TO 1/4 ETCHED LETTERS; DENOTED BY "X"	4. REMOVE BURRS & SHARP EDGES WITH 1/64x45° MAX	CHECKED	J.KELLY	01/02/2015	
5. MACHINED FILET RADII SHALL BE 1/32	6. FINAL SURFACE ROUGHNESS AVG. (Ra) SHALL BE ≤ 250 MICRONS	APPROVED	J.KELLY	01/02/2015	
7. DIMENSIONS IN PARENTHESES ARE CRITICAL DIMENSIONS; 100% INSPECTION REQUIRED	8. A TRIANGLE DENOTES A REVISION	THIRD ANGLE PROJECTION	WEIGHT	4668 LBS.	MATERIAL N/A
9. INTERPRET DRAWING PER ASME Y14.5-2009					REV B SHEET 1 OF 5

RELEASED FOR PRODUCTION

ITEM	QTY	P/N	DESCRIPTION	ITEM	QTY	P/N	DESCRIPTION
1	1	DSKD-03	WELDMENT, SKID, POWER UNIT, ELECTRIC	39.19	2	RX-38	CABLE GLAND, 1/2 NPT
2	1	HRES-150	HYDRAULIC, RESERVOIR, 150 GAL	39.20	1	RX-40	CABLE, MARINE, 75FT
3	1	DBSKT-08	HOSE BASKET FRAME, DIESEL POWER UNIT	39.21	1	RX-43	FUSE BLOCK, BUSEMAN, 30A 600V 3P
4	1	DBSKT-008S1	BASKET, POWER UNIT	39.22	1	RX-45	NIPPLE, CLOSE, 1/2
5	1	PU2500-H21-01	HEAT EXCHANGER, ELECTRIC MOTOR, EXPLOSION PROOF	39.23	1	RX-44	FITTING, 1/2IN, CAPPED ELBOW
6	1	PU2500-H12	WELDMENT, BULKHEAD	39.24	1	RX-46	CABLE, MARINE, 18 1/2
7	1	7042HL-005-S5B-EL3	PLATE, PANEL, BULKHEAD	39.25	1	RX-52	BUSHING, 2 X 1 1/2
8	1	GNSH20-20	GEAR PUMP, DOUBLE, HI/LOW VALVE	40	1	KITFIT-PU2500E24	FITTING KIT-PU2500E24
9	1	PU2500-H16	ADAPTER, MOTOR/PUMP, BELL HOUSING	40.1	2	1612-G	FITTING, PLUG, 1 1/2 NPT
10	1	PU2500-H14	MOTOR SHAFT COUPLING 2 3/8" B X 5/8" KEY	40.2	1	1670	FITTING, QUICK DISCONNECT, PLUG, DUST, FEMALE, 1 1/4
11	1	PU2500-H18	SHAFT COUPLING, PUMP, 14T, 12/24 SPLINE, MfgNo : M500A1412C	40.3	1	20F6X	FITTING, SWIVEL, 1 1/4 MNPT, 1 1/4 FJIC
12	1	PU2500-H17	SPIDER, COUPLING, MOTOR	40.4	2	1617	FITTING, 1 MNPT, 1 MJIC, ELBOW
13	1	DPU660-S1	BLOCK, FILTER	40.5	1	1469	FITTING, 1 MNPT, 1 MJIC, STRAIGHT
14	1	2070	VALVE, RELIEF	40.6	1	1494	FITTING, BUSHING, REDUCER, 3/4 MNPT X 3/8 FNPT
15	2	BAC-3M25RCFF	GAUGE, 2 1/2, 3K, 1/4 MNPT	40.7	1	1527	FITTING, TEE, 3/8" MNPT X 3/8" MJIC X 3/8" MJIC
16	1	W43-16-24U	FITTING, 1 1/2IN CODE 61 X 1IN FNPT, STRAIGHT	40.8	2	1610	FITTING, 3/4 MNPT, PLUG
17	1	PU2500-H19	SUCTION STRAINER, SCHROEDER, 2 1/2"	40.9	2	1576	FITTING, 1/4 MNPT, 1/4 MJIC, ELBOW
18	1	KITFIT-EPU	KIT, FITTING, HYDRAULIC	40.10	3	4-6C5OX-S	FITTING, 3/8 MORB, 1/4 MJIC, ELBOW
19	2	D40H-75-300-SL	CLAMP, T-BOLT 2 1/2	40.11	1	1499	FITTING, REDUCER BUSHING, 1 1/4 X 1 NPT
20	1	H40-24	HOSE, 2 1/2 X 24	40.12	1	1669	FITTING, TEE, BRANCH, 1 MNPT, 1 FNPT
21	1	PN24-33T	PIPE NIPPLE, 1 1/2 MNPT X 33, SCH 80	40.13	2	1470	FITTING, 1 1/4, MNPT, 1 1/4, MJIC, STRAIGHT
22	1	PN20-33T	PIPE NIPPLE, 1 1/4 X 33 MNPT, SCH 80	40.14	1	1611	FITTING, 1 MNPT, PLUG
23	1	PN12-20T	FITTING, 3/4 MNPT X 20 LONG SCH. 80 PIPE NIPPLE	40.15	1	1463	NIPPLE, HEX, 1 1/4"
24	1	HYDOIL	LETTER, CLEAR, ADHESIVE	40.16	1	1462	FITTING, NIPPLE, HEX, 1"
25	1	1014	U-BOLT, 1/4-20, 1 3/4 ID	40.17	2	CM4556	VALVE, PARKER, 1/4 NPT
26	7	SST-18	SCREW, BUTTON HEAD, 1/4-20 X 1, STAINLESS	40.18	1	1461	FITTING, 3/4 MNPT, 3/4 MNPT, HEX NIPPLE
27	7	1737	NUT, NYLOCK, 1/4-20 SS	40.19	2	1653	FITTING, 1/4 FNPT, 1/4 MJIC, ELBOW
28	4	1151	LOCKWASHER, 5/8, STEEL, GR8	40.20	2	1576-A	FITTING, 1/4 MNPT, 3/8 MJIC, ELBOW
29	4	203	SCREW, HEX, 5/8-11, 2 3/4, STEEL, GR 8, ZINC	40.21	1	16VTX-S	FITTING, 1 MNPT, 1 MJIC, 45
30	16	195A	WASHER, FLAT, 5/8, GR8	40.22	1	V500P-12	VALVE, BALL, BRASS, 3/4" NPT, PARKER# V500P-12
31	8	1103	LOCKWASHER, 1/2	40.23	1	PN40-C	PIPE NIPPLE, 2 1/2 X CLOSE, SCH. 80
32	12	1112	SCREW, HEX, 1/2-13, 1 1/2	40.24	1	1391	FITTING, STREET ELBOW, LOW PRESSURE, 3/4
33	20	1102	WASHER, FLAT, 1/2, STEEL, GR08	40.25	1	1393	FITTING, STREET ELBOW, LOW PRESSURE, 1 1/4 IN
34	4	1101	NUT, HEX HEAD, 1/2-13	40.26	1	1504	FITTING, PIPE NIPPLE, HEX, 1 1/2"
35	6	1156-A	NUT, NYLOCK, 5/8 - 11	40.27	1	1562	FITTING, 1/4 MNPT, 1/4 MJIC, STRAIGHT
36	6	1157	SCREW, HEX, 5/8-11 X 1 1/2, GR8	40.28	1	1666	FITTING, QUICK DISCONNECT, PLUG, DUST, FEMALE, 1
37	4	1087	NUT, NYLOCK, 1/2-13	40.29	1	20-24CTXS	FITTING, ELBOW, 90 DEG., 1 1/2" MNPT X 1 1/4" MJIC
38	1	KITHOSE-PU2500E24	KIT, FITTING, HYDRAULIC	40.30	1	24CD	FITTING, ELBOW, 1 1/2 NPT, STREET EL
38.1	1	H4-17-FJFJ	ASSEMBLY, HOSE, 1/4 X 17	40.31	1	1445	FITTING, QUICK DISCONNECT, WING TYPE 1 1/4 FEMALE
38.2	3	H4-60-FJFJ	ASSEMBLY, HOSE, 1/4 X 60	40.32	1	1440	FITTING, QUICK DISCONNECT, 1 FML-WING TYPE
38.3	1	H6-20-FJFJ	ASSEMBLY, HOSE, 3/8	41	1	KITHYD-DPU	ASSEMBLY, HYDRAULIC FITTINGS
38.4	1	H6-22-FJFJ	ASSEMBLY, HOSE, 3/8 X 22 LENGTH	41.1	1	SNS-25N-25S-11	ADAPTER, WELD, 2 1/2
38.5	1	H16-21-FJFJ	ASSEMBLY, HOSE, 1 FJIC X 21, PARKER 451TC TOUGH COVER	41.2	1	BVAL-2500S-4321	VALVE, BALL, 2 1/2" SAE
38.6	1	H16-23-FJFJ	ASSEMBLY, HOSE, 1 FJIC X 23, PARKER 451TC TOUGH COVER	41.3	1	40SFO	FLANGE, SPLIT, 2 1/2", CODE 61
38.7	2	H20-60-FJFJS	ASSEMBLY, HOSE, 1 1/4 X 60	41.4	1	BSE-25HB-25S-11	ADAPTER, 2 1/2, 2 1/2, 90
39	1	KITMOTOR-PU2500	KIT, MOTOR	41.5	1	SBE-25HB-25SM-11	FITTING, 2 1/2 HOSE BARB X 2 1/2, CODE 61
39.1	1	PU2500-H9-01	ELECTRIC MOTOR-75 HP, EX 480VAC, 3PH,50 / 60HZ,C-FACE W/FEET, 1800 RPM,NOT F-2 MOD NOT F2 MODIFIED	42	1	PU2500-H23	TECH CABLE, 50FT
39.2	1	PU2500-H11-01	MOTOR STARTER, 75 HP, EX 480VAC, 3PH, 50/60 HZ EXPLOSION PROOF	43	1	PU4060-S33	SWITCH, FLOAT, 1/4 MNPT
39.3	1	1499	FITTING, REDUCER BUSHING, 1 1/4 X 1 NPT				
39.4	1	RX-19	WEG F2 MODIFY FOR 75 HP				
39.5	1	RX-25	CABLE, CLX, CRF, 2/3				
39.6	2	RX-26	CORD GRIP, 1IN				
39.7	1	RX-27	CABLE, CLX, 14/3				
39.8	2	RX-28	CONNECTION, TMCX, 1/2 IN				
39.9	6	RX-8	CONNECTOR, INSULATED				
39.10	3	RX-29	FUSE, 600V, ATQ AMP Q1				
39.11	1	RX-30	CONTRACTOR, 127V, 9A				
39.12	1	RX-31	RELAY, OVERLOAD, 2.5A 600V				
39.13	1	RX-32	BUSHING, REDUCER, 2 1/2 X 1 1/4				
39.14	2	RX-34	PLUG, RECESSED, 2IN				
39.15	1	RX-35	BUSHING, REDUCER, 3 X 1 1/4				
39.16	1	RX-36	BUSHING, REDUCER, 2 X 1				
39.17	1	RX-39	UNILET, APPLENTION				
39.18	2	RX-37	FITTING, CABLE GLAND, 3/4 NPT				

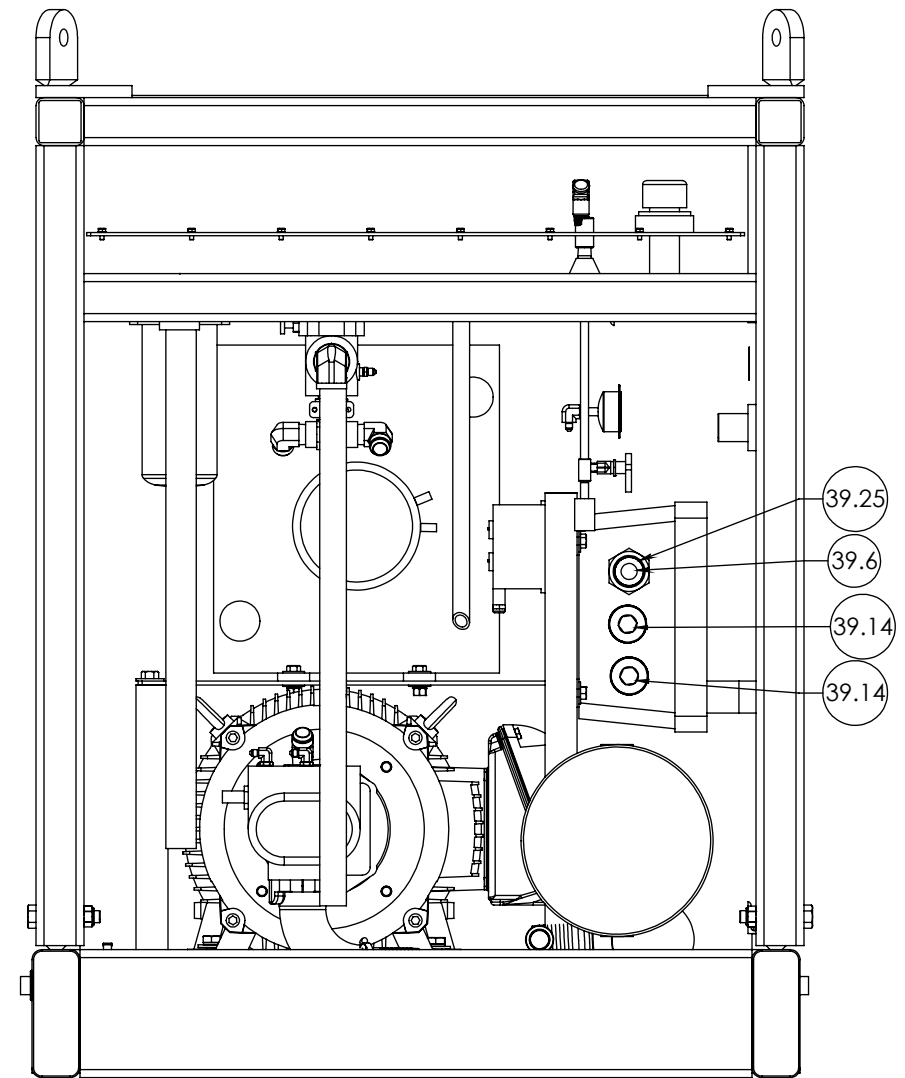
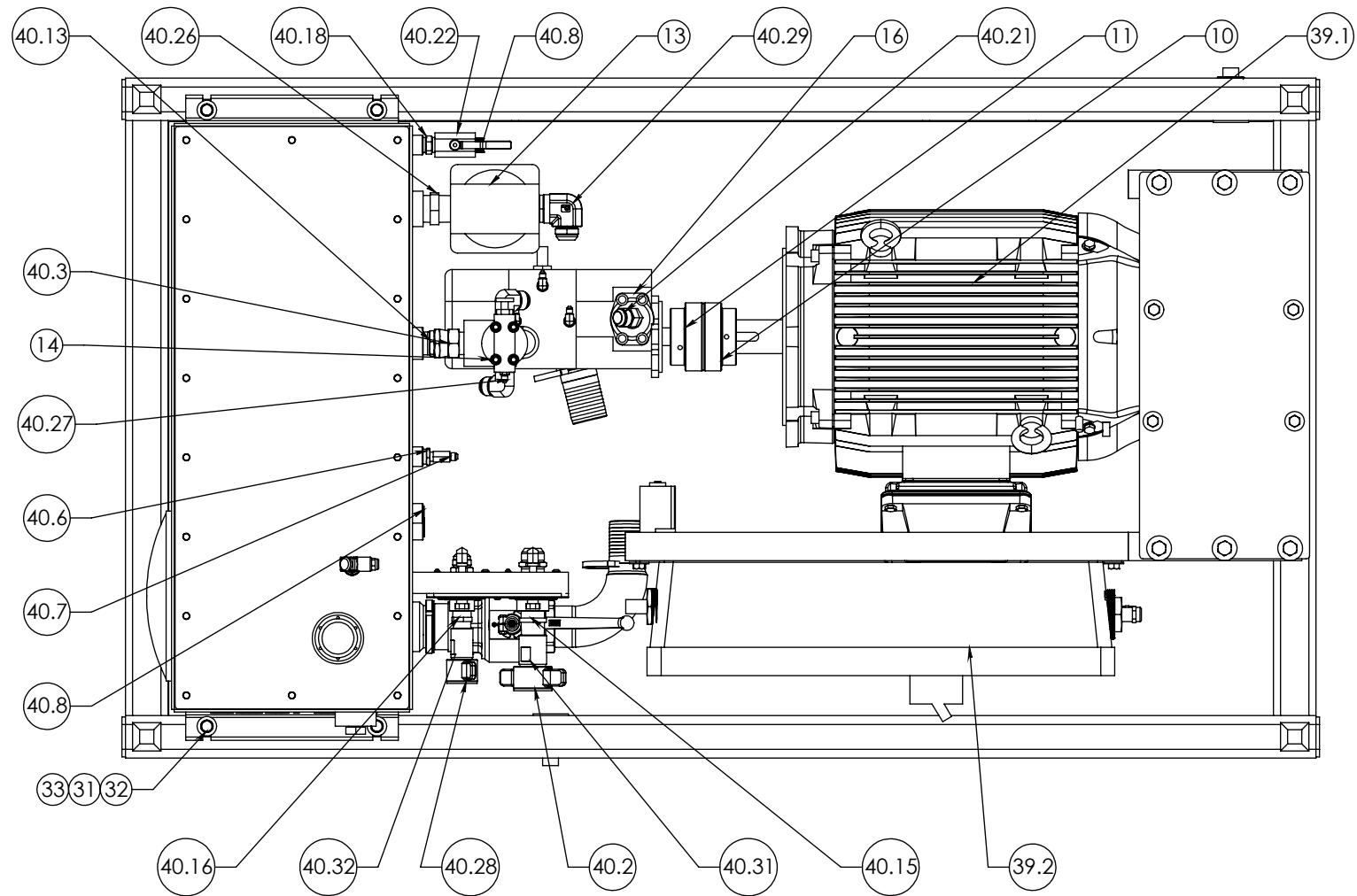


DESCRIPTION			
ASSEMBLY, POWER UNIT, ELECTRIC, WITH COOLER & TECH CABLE			
SIZE	PART NO.	REV	
B	PU2500E24-11	B	
MATERIAL		SHEET 2 OF 5	
		N/A	

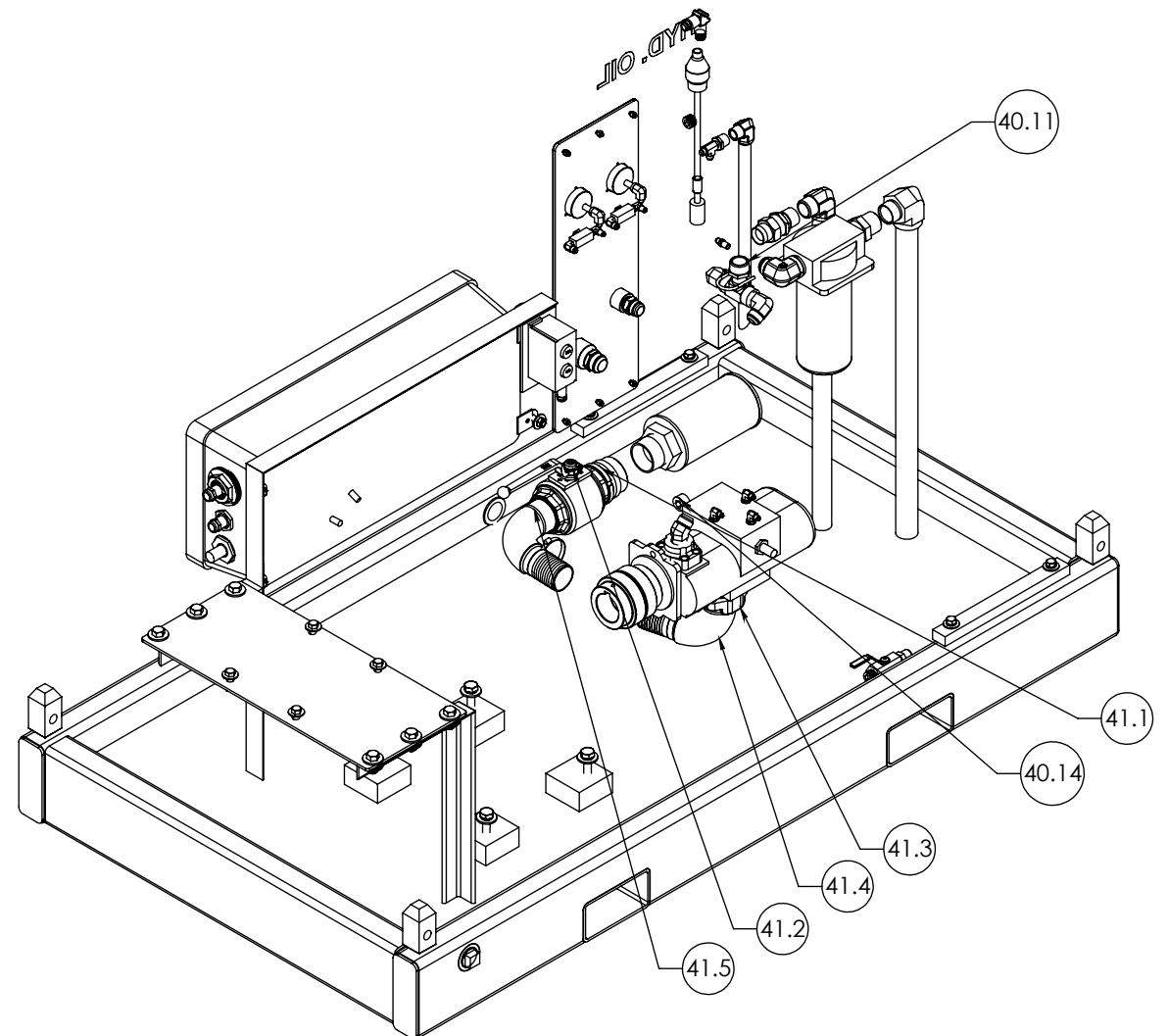
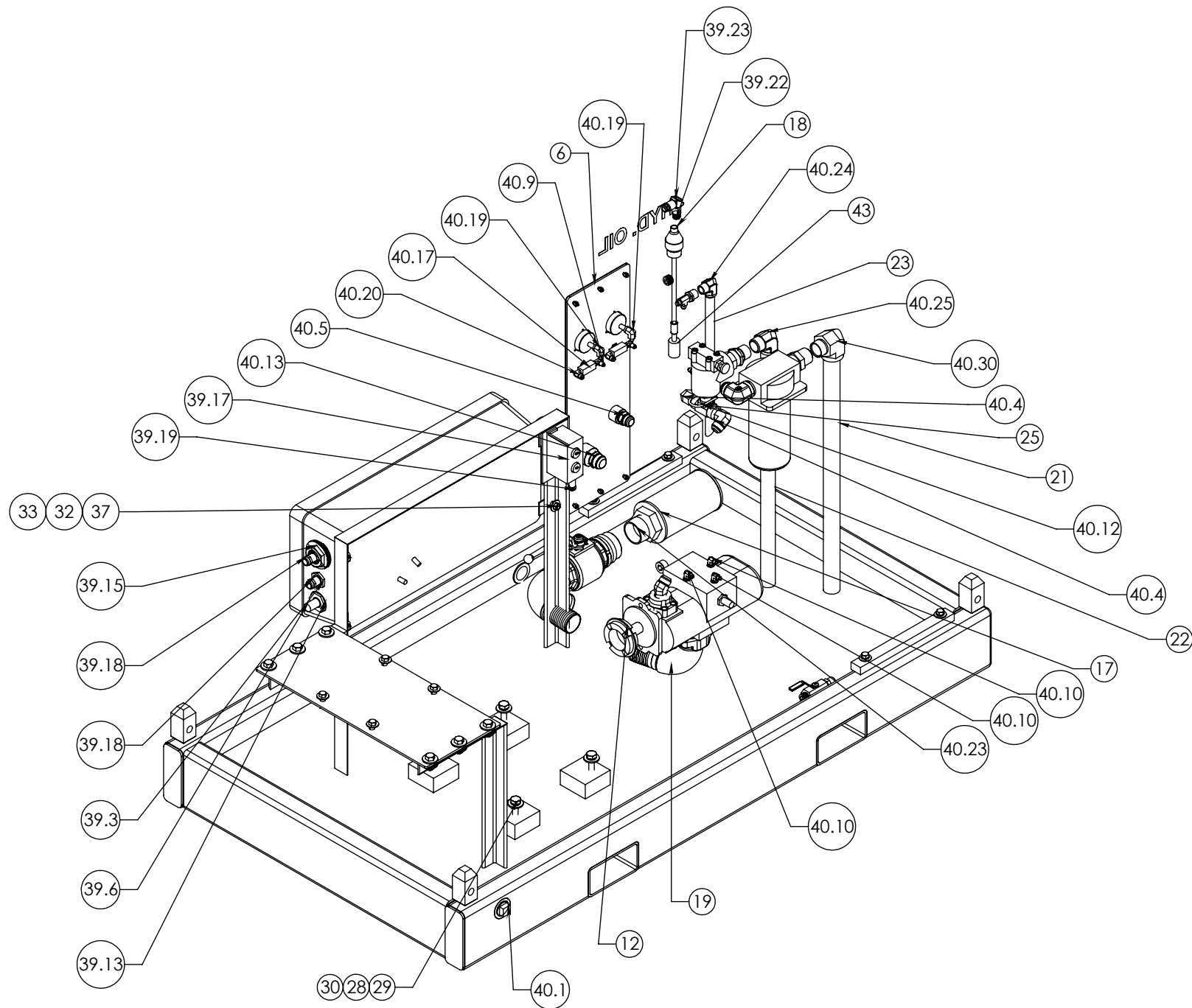


DESCRIPTION			
ASSEMBLY, POWER UNIT, ELECTRIC, WITH COOLER & TECH CABLE			
SIZE	PART NO.	REV	
B	PU2500E24-11	B	
MATERIAL	N/A	SHEET 3 OF 5	

SHOWN WITHOUT TOP BASKET AND BASKET CAGE



DESCRIPTION		
	ASSEMBLY, POWER UNIT, ELECTRIC, WITH COOLER & TECH CABLE	
SIZE	PART NO.	REV
B	PU2500E24-11	B
MATERIAL	N/A	SHEET 4 OF 5



DESCRIPTION			
ASSEMBLY, POWER UNIT, ELECTRIC, WITH COOLER & TECH CABLE			
SIZE	PART NO.	REV	
B	PU2500E24-11	B	
MATERIAL		SHEET 5 OF 5	
N/A			