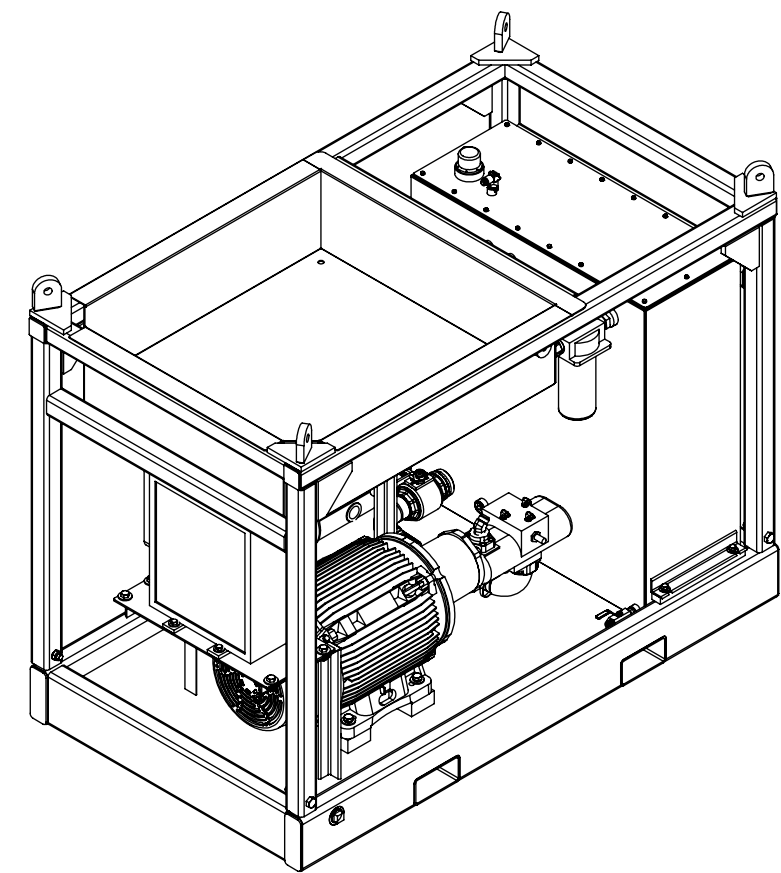


PU2500E24 SPECIFICATIONS			
POWER REQUIREMENT	3 PHASE 480 V 60 Hz	3 PHASE 380 V 50 Hz	3 PHASE 240V 50Hz
FULL LOAD / INRUSH CURRENT	82.4 A / 319A	97.6A / 403A	165A / 638 A
MAXIMUM OPERATING PRESSURE	3000 PSI / 207 BAR		
MAXIMUM HYDRAULIC FLOW	60 GPM / 227 LPM		
MAXIMUM MOTOR OUTPUT	75 HP		
HYDRAULIC RESERVOIR CAPACITY	130 GALLON / 492 L		
OIL REQUIREMENT	AW-68		
SPECIAL FEATURES	COOLER		
	EXPLOSION PROOF		

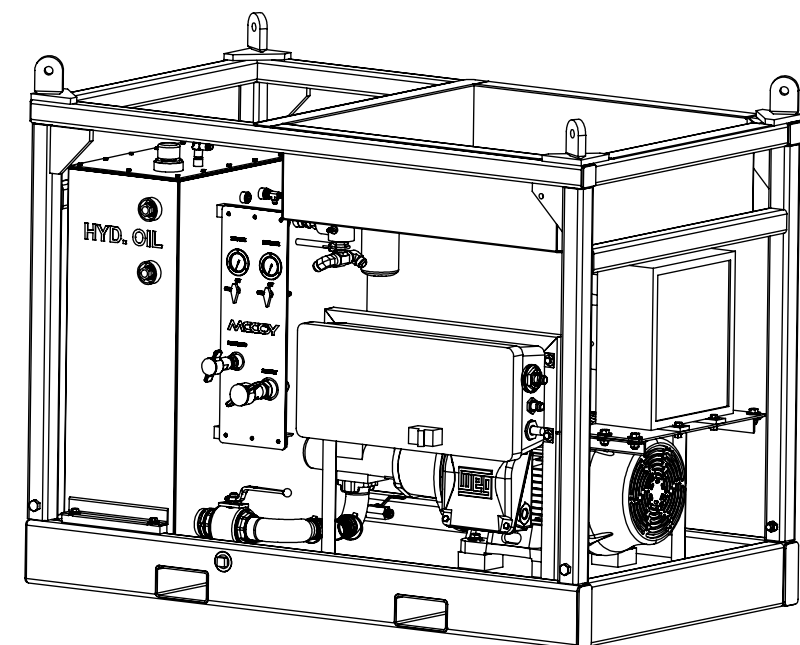


REVISIONS				
REVISION	ECO NUMBER	ECO DESCRIPTION	ECO COMPLETED BY	ECO COMPLETED DATE
A	14-0223	SEE ECO COPY	R.CENAC	07/16/2014
B	16-0159	ADDED (1) 1STRAINER, (1) V500P-16, (2) 1371-A, (1) 1469	M.BUDDEN	8/18/2016
C	17-0101	ADDED GA SHEET WITH SPECIFICATIONS; REMOVE 1STRAINER; V500P-16, 1469, 1371-A	M.BUDDEN	4/25/2017

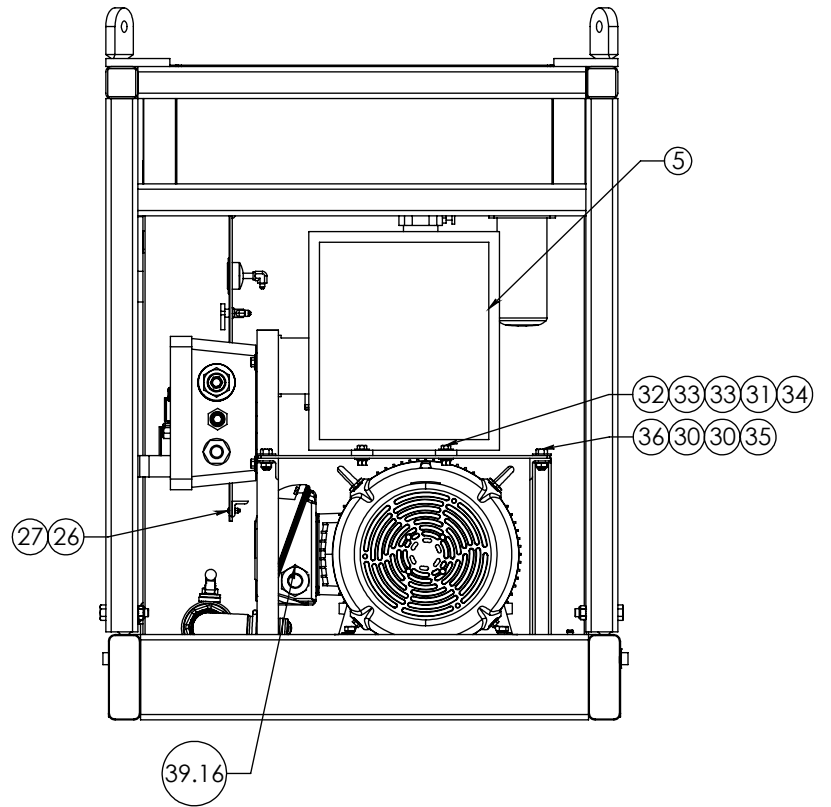
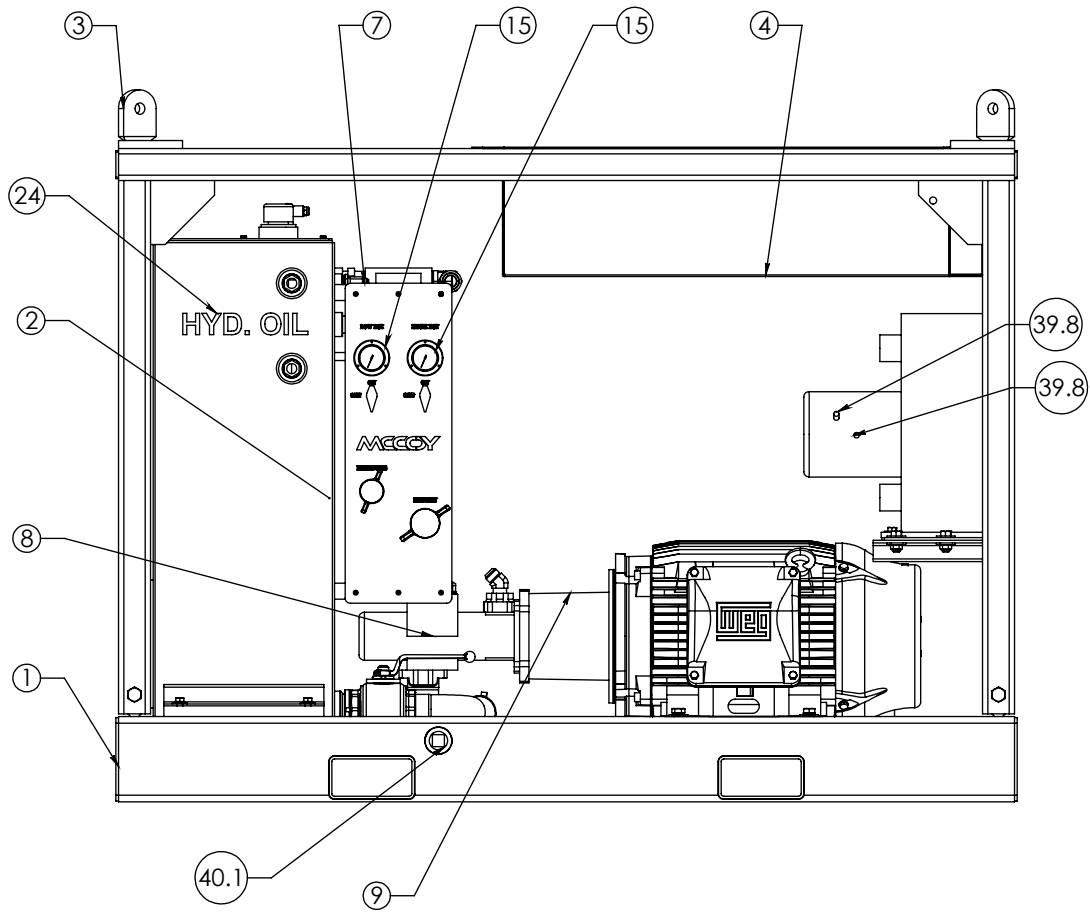
UNLESS OTHERWISE SPECIFIED:		PROPRIETARY STATEMENT		DESCRIPTION		
1. DIMENSIONS ARE IN INCHES	THIS DOCUMENT IS THE PROPERTY OF MCCOY CORPORATION AND IS CONSIDERED CONFIDENTIAL. THIS INFORMATION MAY NOT BE USED, DISCLOSED, COPIED, OR REPRODUCED IN ANY FORM, WITHOUT THE EXPRESS WRITTEN CONSENT OF MCCOY CORPORATION.			<b>ASSEMBLY, POWER UNIT, ELECTRIC, WITH COOLER</b>		
2. TOLERANCES: ANGULAR ± 1° FRACTIONAL ± 1/16 TWO PLACE DECIMAL ± 0.02 THREE PLACE DECIMAL ± 0.005						
3. IDENTIFY P/N & MAIL P.O. USING 1/8 TO 1/4 ETCHED LETTERS; DENOTED BY "X"		DRAWN	CM	9/12/1993	SIZE PART NO. B PU2500E24	
4. REMOVE BURRS & SHARP EDGES WITH 1/64x45° MAX		CHECKED	NM			MATERIAL N/A
5. MACHINED FILET RADII SHALL BE 1/32		APPROVED	DSB			
6. FINAL SURFACE ROUGHNESS AVG. (Ra) SHALL BE ≤ 250 MICROINCHES		THIRD ANGLE PROJECTION	WEIGHT	4665 LBS.	SHEET 1 OF 7	
7. DIMENSIONS IN PARENTHESES ARE CRITICAL DIMENSIONS; 100% INSPECTION REQUIRED						
8. A TRIANGLE DENOTES A REVISION						
9. INTERPRET DRAWING PER ASME Y14.5-2009						

RELEASED FOR PRODUCTION

ITEM	QTY	P/N	DESCRIPTION	ITEM	QTY	P/N	DESCRIPTION	ITEM	QTY	P/N	DESCRIPTION
1	1	DSKD-03	WELDMENT, SKID, POWER UNIT, ELECTRIC	39.16	1	RX-36	BUSHING, REDUCER, 2 X 1	41.2	1	BVAL-2500S-4321	VALVE, BALL, 2 1/2" SAE
2	1	HRES-150	HYDRAULIC, RESERVOIR, 150 GAL	39.17	1	RX-39	UNILET, APPLENTION	41.3	1	40SFO	FLANGE, SPLIT, 2 1/2", CODE 61
3	1	DBSKT-08	HOSE BASKET FRAME, DIESEL POWER UNIT	39.18	2	RX-37	FITTING, CABLE GLAND, 3/4 NPT	41.4	1	BSE-25HB-25S-11	ADAPTER, 2 1/2 , 2 1/2, 90
4	1	DBSKT-008S1	BASKET, POWER UNIT	39.19	2	RX-38	CABLE GLAND, 1/2 NPT	41.5	1	SBE-25HB-25SM-11	FITTING, 2 1/2 HOSE BARB X 2 1/2, CODE 61 FLANGE ADAPTER, 90 DEG
5	1	PU2500-H21-01	HEAT EXCHANGER, ELECTRIC MOTOR, EXPLOSION PROOF	39.20	1	RX-40	CABLE, MARINE, 75FT	42	1	PU4060-S33	SWITCH, FLOAT, 1/4 MNPT
6	1	PU2500-H12	WELDMENT, BULKHEAD	39.21	1	RX-43	FUSE BLOCK, BUSEMAN, 30A 600V 3P				
7	1	7042HL-005-S5B-EL3	PLATE, PANEL, BULKHEAD	39.22	1	RX-45	NIPPLE, CLOSE, 1/2				
8	1	GNSH20-20	GEAR PUMP, DOUBLE, HI/LOW VALVE	39.23	1	RX-44	FITTING, 1/2IN, CAPPED ELBOW				
9	1	PU2500-H16	ADAPTER, MOTOR/PUMP, BELL HOUSING	39.24	1	RX-46	CABLE, MARINE, 18 1/2				
10	1	PU2500-H14	MOTOR SHAFT COUPLING 2 3/8" B X 5/8" KEY	39.25	1	RX-52	BUSHING, 2 X 1 1/2				
11	1	PU2500-H18	SHAFT COUPLING, PUMP, 14T, 12/24 SPLINE, MfgNo : M500A1412C	40	1	KITFIT-PU2500E24	FITTING KIT-PU2500E24				
12	1	PU2500-H17	SPIDER, COUPLING, MOTOR	40.1	2	1612-G	FITTING, PLUG, 1 1/2 NPT				
13	1	DPU660-S1	BLOCK, FILTER	40.2	1	1670	FITTING, QUICK DISCONNECT, PLUG, DUST, FEMALE, 1 1/4				
14	1	2070	VALVE, RELIEF	40.3	1	20F6X	FITTING, SWIVEL, 1 1/4 MNPT, 1 1/4 FJIC				
15	2	BAC-3M25RCFF	GAUGE, 2 1/2, 3K, 1/4 MNPT	40.4	2	1617	FITTING, 1 MNPT, 1 MJIC, ELBOW				
16	1	W43-16-24U	FITTING, 1 1/2IN CODE 61 X 1IN FNPT, STRAIGHT	40.5	1	1469	FITTING, 1 MNPT, 1 MJIC, STRAIGHT				
17	1	PU2500-H19	SUCTION STRAINER, SCHROEDER, 2 1/2"	40.6	1	1494	FITTING, BUSHING, REDUCER, 3/4 MNPT X 3/8 FNPT				
18	1	KITFIT-EPU	KIT, FITTING, HYDRAULIC	40.7	1	1527	FITTING, TEE, 3/8" MNPT X 3/8" MJIC X 3/8" MJIC				
19	2	D40H-75-300-SL	CLAMP, T-BOLT 2 1/2	40.8	2	1610	FITTING, 3/4 MNPT, PLUG				
20	1	H40-24	HOSE, 2 1/2 X 24	40.9	2	1576	FITTING, 1/4 MNPT, 1/4 MJIC, ELBOW				
21	1	PN24-33T	PIPE NIPPLE, 1 1/2 MNPT X 33, SCH 80	40.10	3	4-6C5OX-S	FITTING, 3/8 MORB, 1/4 MJIC, ELBOW				
22	1	PN20-33T	PIPE NIPPLE, 1 1/4 X 33 MNPT, SCH 80	40.11	1	1499	FITTING, REDUCER BUSHING, 1 1/4 X 1 NPT				
23	1	PN12-20T	FITTING, 3/4 MNPT X 20 LONG SCH. 80 PIPE NIPPLE	40.12	1	1669	FITTING, TEE, BRANCH, 1 MNPT, 1 FNPT				
24	1	HYDOIL	LETTER, CLEAR, ADHESIVE	40.13	2	1470	FITTING, 1 1/4, MNPT, 1 1/4, MJIC, STRAIGHT				
25	1	1014	U-BOLT, 1/4-20, 1 3/4 ID	40.14	1	1463	NIPPLE, HEX, 1 1/4"				
26	7	SST-18	SCREW, BUTTON HEAD, 1/4-20 X 1, STAINLESS	40.15	1	1462	FITTING, NIPPLE, HEX, 1"				
27	7	1737	NUT, NYLOCK, 1/4-20 SS	40.16	2	CM4556	VALVE, PARKER, 1/4 NPT				
28	4	1151	LOCKWASHER, 5/8, STEEL, GR8	40.17	1	1461	FITTING, 3/4 MNPT, 3/4 MNPT, HEX NIPPLE				
29	4	203	SCREW, HEX, 5/8-11, 2 3/4, STEEL, GR 8, ZINC	40.18	2	1653	FITTING, 1/4 FNPT, 1/4 MJIC, ELBOW				
30	16	195A	WASHER, FLAT, 5/8, GR8	40.19	2	1576-A	FITTING, 1/4 MNPT, 3/8 MJIC, ELBOW				
31	8	1103	LOCKWASHER, 1/2	40.20	1	16VTX-S	FITTING, 1 MNPT, 1 MJIC, 45				
32	12	1112	SCREW, HEX, 1/2-13, 1 1/2	40.21	1	V500P-12	VALVE, BALL, BRASS, 3/4" NPT, PARKER# V500P-12				
33	20	1102	WASHER, FLAT, 1/2, STEEL, GR08	40.22	1	PN40-C	PIPE NIPPLE, 2 1/2 X CLOSE, SCH. 80				
34	4	1101	NUT, HEX HEAD, 1/2-13	40.23	1	1391	FITTING, STREET ELBOW, LOW PRESSURE, 3/4				
35	6	1156-A	NUT, NYLOCK, 5/8 - 11	40.24	1	1393	FITTING, STREET ELBOW, LOW PRESSURE, 1 1/4 IN				
36	6	1157	SCREW, HEX, 5/8-11 X 1 1/2, GR8	40.25	1	1504	FITTING, PIPE NIPPLE, HEX, 1 1/2"				
37	4	1087	NUT, NYLOCK, 1/2-13	40.26	1	1562	FITTING, 1/4 MNPT, 1/4 MJIC, STRAIGHT				
38	1	KITHOSE-PU2500E24	KIT, FITTING, HYDRAULIC	40.27	1	1666	FITTING, QUICK DISCONNECT, PLUG, DUST, FEMALE, 1				
39	1	KITMOTOR-PU2500	KIT, MOTOR	40.28	1	20-24CTXS	FITTING, ELBOW, 90 DEG., 1 1/2" MNPT X 1 1/4" MJIC				
39.1	1	PU2500-H9-01	ELECTRIC MOTOR-75 HP, EX 480VAC, 3PH, 50 / 60HZ, C-FACE W/FEET, 1800 RPM, NOT F-2 MOD NOT F2 MODIFIED	40.29	1	24CD	FITTING, ELBOW, 1 1/2 NPT, STREET EL				
39.2	1	PU2500-H11-01	MOTOR STARTER, 75 HP, EX 480VAC, 3PH, 50/60 HZ EXPLOSION PROOF	40.30	1	1611	FITTING, 1 MNPT, PLUG				
39.3	1	1499	FITTING, REDUCER BUSHING, 1 1/4 X 1 NPT	40.31	1	1445	FITTING, QUICK DISCONNECT, WING TYPE 1 1/4 FEMALE				
39.4	1	RX-19	WEG F2 MODIFY FOR 75 HP	40.32	1	1440	FITTING, QUICK DISCONNECT, 1 FML-WING TYPE				
39.5	1	RX-25	CABLE, CLX, CRF, 2/3	41	1	KITHYD-DPU	ASSEMBLY, HYDRAULIC FITTINGS				
39.6	2	RX-26	CORD GRIP, 1IN	41.1	1	SNS-25N-25S-11	ADAPTER, WELD, 2 1/2				
39.7	1	RX-27	CABLE, CLX, 14/3								
39.8	2	RX-28	CONNECTION, TMCX, 1/2 IN								
39.9	6	RX-8	CONNECTOR, INSULATED								
39.10	3	RX-29	FUSE, 600V, ATQ AMP Q1								
39.11	1	RX-30	CONTRACTOR, 127V, 9A								
39.12	1	RX-31	RELAY, OVERLOAD, 2.5A 600V								
39.13	1	RX-32	BUSHING, REDUCER, 2 1/2 X 1 1/4								
39.14	2	RX-34	PLUG, RECESSED, 2IN								
39.15	1	RX-35	BUSHING, REDUCER, 3 X 1 1/4								

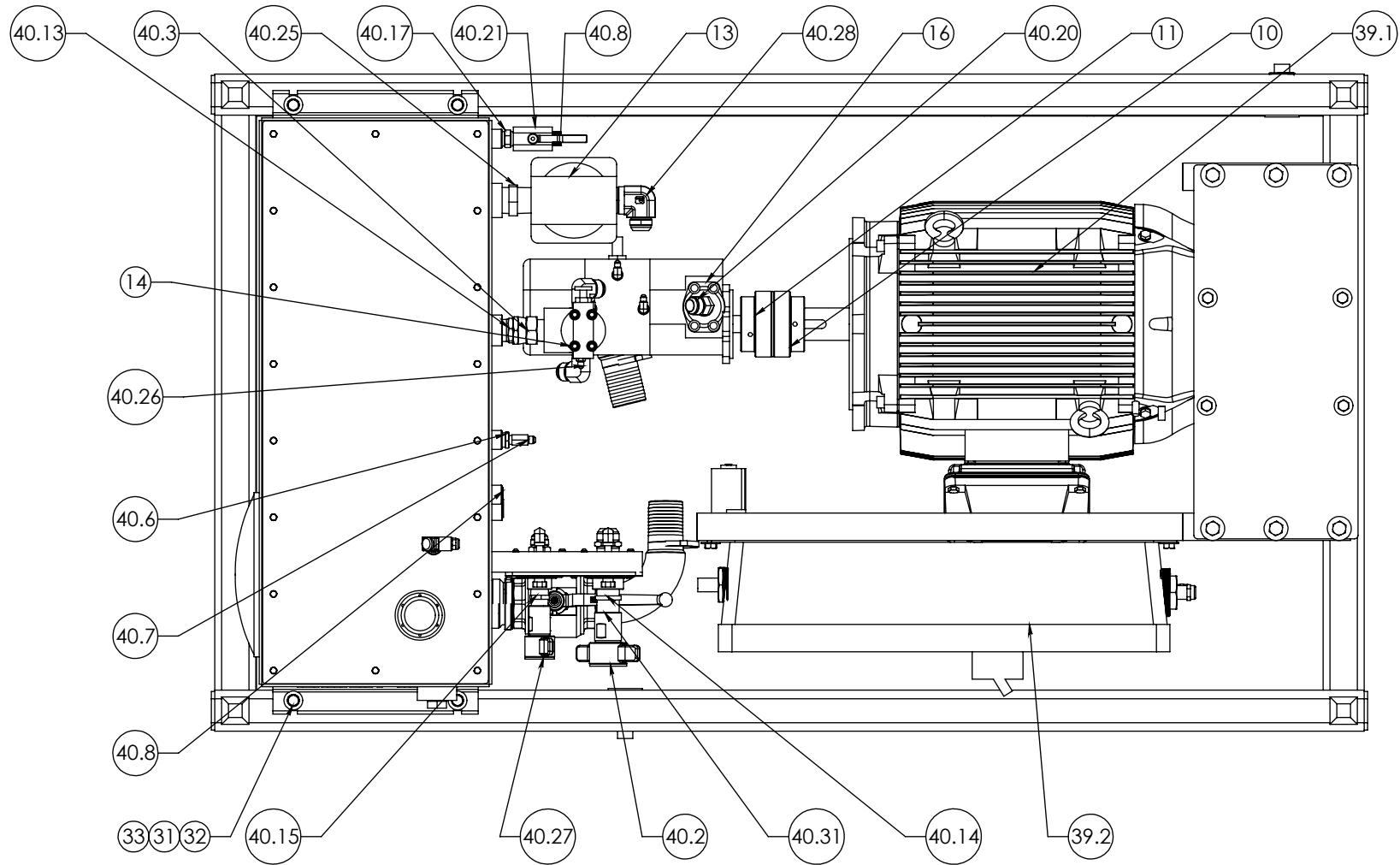


DESCRIPTION			
ASSEMBLY, POWER UNIT, ELECTRIC, WITH COOLER			
SIZE	PART NO.	REV	
B	PU2500E24	C	
MATERIAL		SHEET 2 OF 7	
N/A			

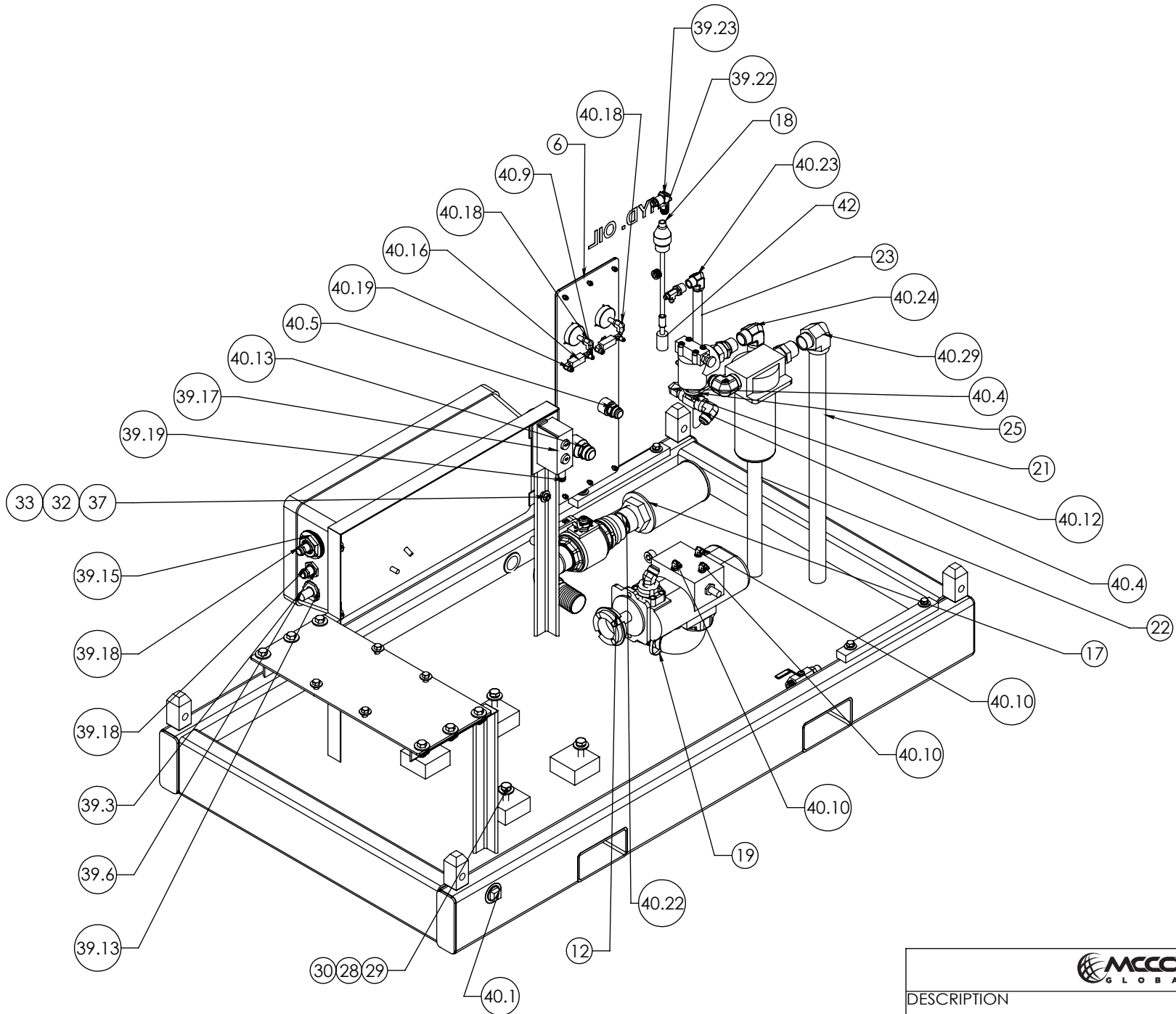


DESCRIPTION		
ASSEMBLY, POWER UNIT, ELECTRIC, WITH COOLER		
SIZE	PART NO.	REV
A	PU2500E24	C
MATERIAL	N/A	SHEET 3 OF 7

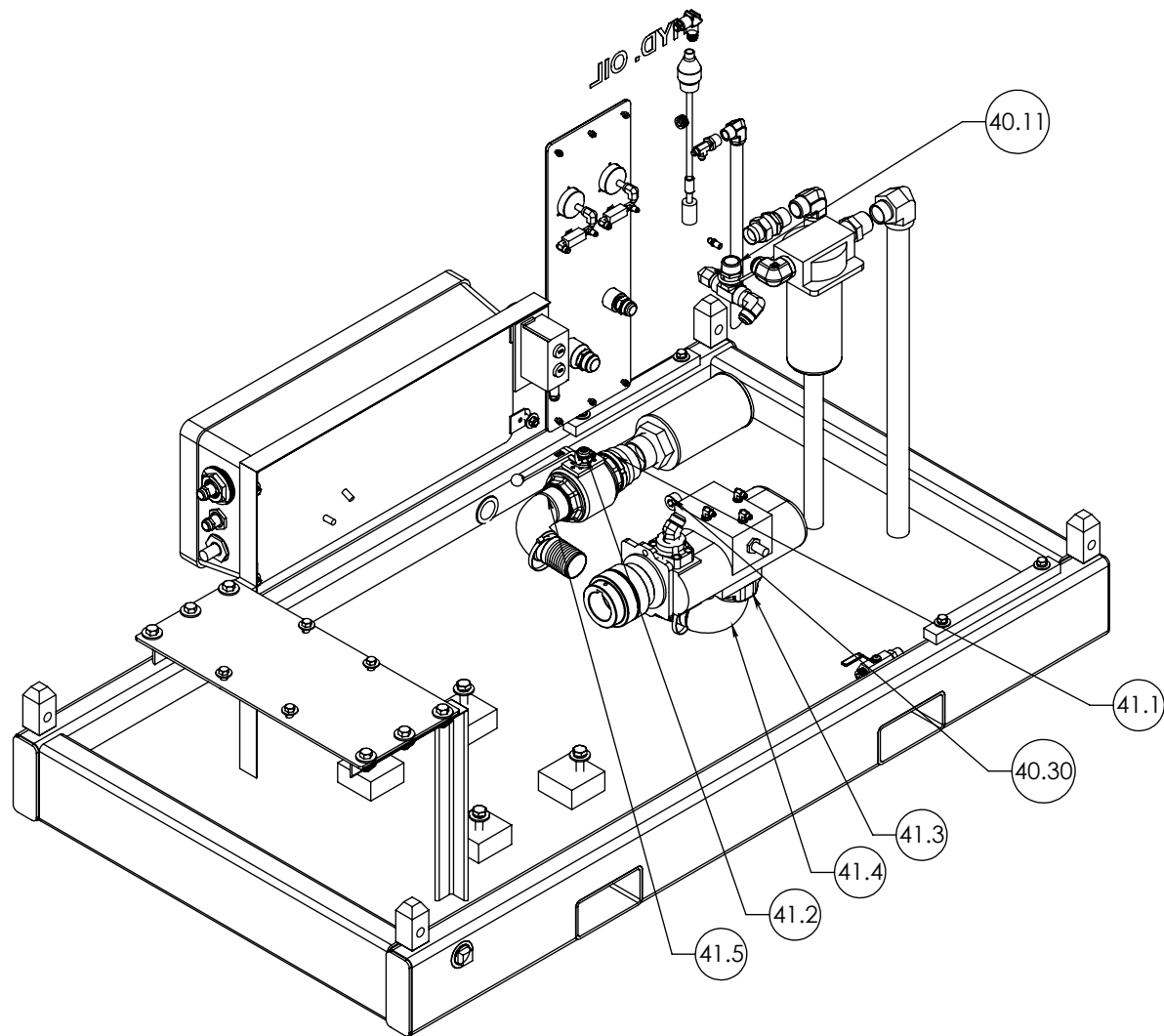
SHOWN WITHOUT TOP BASKET AND BASKET CAGE



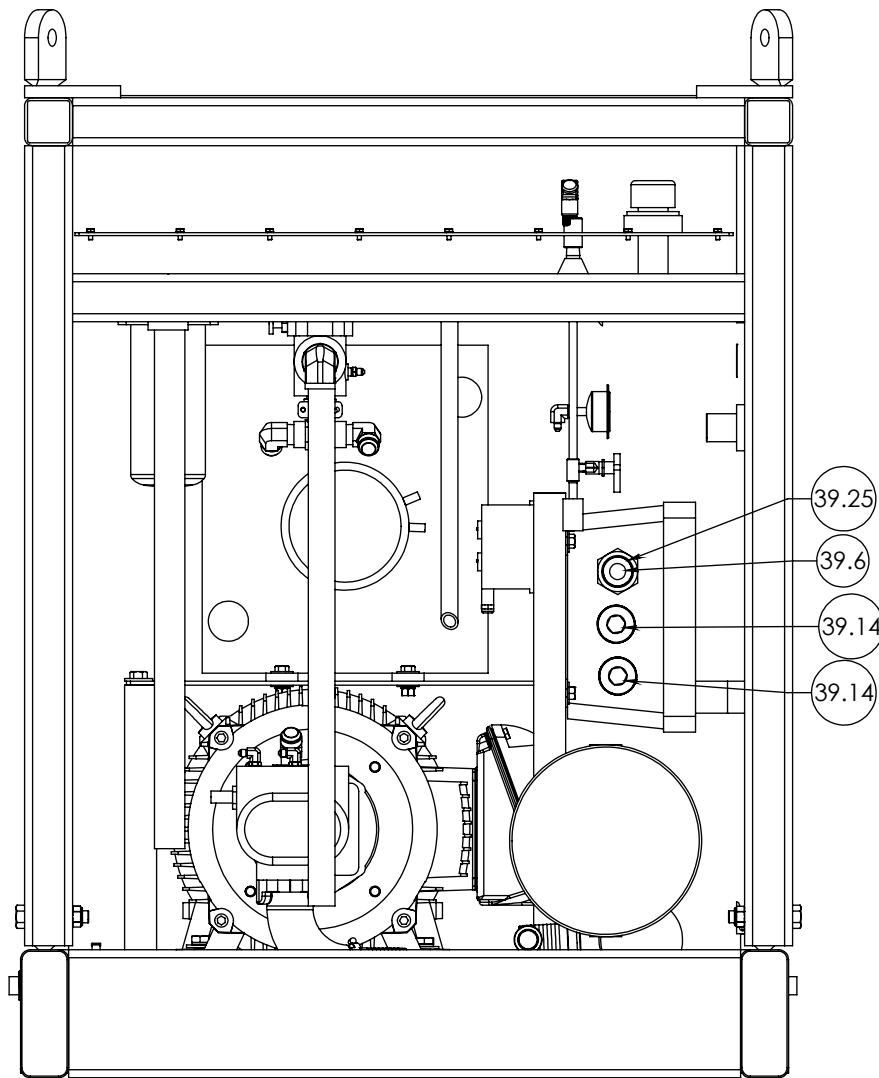
DESCRIPTION		
ASSEMBLY, POWER UNIT, ELECTRIC, WITH COOLER		
SIZE	PART NO.	REV
A	PU2500E24	C
MATERIAL	N/A	SHEET 4 OF 7



DESCRIPTION		
ASSEMBLY, POWER UNIT, ELECTRIC, WITH COOLER		
SIZE	PART NO.	REV
A	PU2500E24	C
MATERIAL	N/A	SHEET 5 OF 7



DESCRIPTION		
ASSEMBLY, POWER UNIT, ELECTRIC, WITH COOLER		
SIZE	PART NO.	REV
A	PU2500E24	C
MATERIAL	N/A	SHEET 6 OF 7



		
DESCRIPTION		
ASSEMBLY, POWER UNIT, ELECTRIC, WITH COOLER		
SIZE	PART NO.	REV
A	PU2500E24	C
MATERIAL	N/A	SHEET 7 OF 7