

BUCKING UNIT SPECIFICATIONS		
MAX TORQUE	190,000 ft-lbs	257,600 N-m
SYSTEM PRESSURE	3,000 PSI	207 Bar
ARM LENGTH	21.5 Inches	54.6 cm
MASS	7,800 Lbs.	3,500 kg
SPEED (RPM, ESTIMATED)		
AT FLOW RATE (GPM/LPM):	26.4 GPM	100 LPM
LOW GEAR	N/A	
HIGH GEAR	N/A	

NUMBER OF JAWS	PIPE SIZE (IN)	MAX. TORQUE @ 2,000 PSI (ft-lb)	MAX. TORQUE @ 1,800 PSI (ft-lb)	MAX. TORQUE @ 1,500 PSI (ft-lb)	MAX. TORQUE @ 1,000 PSI (ft-lb)	
6 JAWS	13.500	190,000	190,000	190,000	151,100	
	13.375				149,700	
	11.750			178,900	180,500	131,500
	10.750				165,800	120,300
	9.875	170,700	153,700	149,000	110,500	
	8.875			128,000	99,300	
	7.625	156,700	141,100	128,000	85,300	
	7.000	148,300	133,500	117,500	78,300	
	6.625	125,900	113,300	111,200	74,100	
	5.625	123,100	110,800	94,400	62,900	
	5.500	111,900	100,700	92,300	61,500	
	5.000	100,700	90,700	83,900	55,900	
	4.500	89,500	80,600	75,500	50,300	
	4.000	78,300	70,500	67,100	44,700	
3.500			58,700	39,100		

NOTES:

- 1) THIS TABLE REPRESENTS THE THEORETICAL TORQUE AT WHICH THE DIES WILL SLIP ON THE TUBULAR
- 2) THIS UNIT REQUIRES AND RP5047-3XXX MODEL CONTROL CONSOLE TO OPERATE

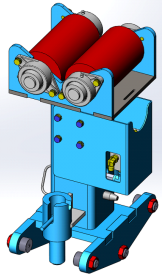
REVISIONS				
REVISION	ECN NUMBER	ECN DESCRIPTION	ECN COMPLETED BY	ECN COMPLETED DATE
2	13-0205	SEE ECO COPY	JK	2013
A	17-0111	UPDATED GA TO NEW FORMAT	J. KELLY	2017

UNLESS OTHERWISE SPECIFIED:		PROPRIETARY STATEMENT		DESCRIPTION	
1. DIMENSIONS ARE IN INCHES		THIS DOCUMENT IS THE PROPERTY OF MCCOY CORPORATION AND IS CONSIDERED CONFIDENTIAL. THIS INFORMATION MAY NOT BE USED, DISCLOSED, COPIED, OR REPRODUCED IN ANY FORM, WITHOUT THE EXPRESS WRITTEN CONSENT OF MCCOY CORPORATION.		ASSEMBLY, BUCKING UNIT, 13 1/2 BACKUP, 190K BREAKOUT, 12FT	
2. TOLERANCES: ANGULAR ± 1° FRACTIONAL ± 1/16 TWO PLACE DECIMAL ± 0.02 THREE PLACE DECIMAL ± 0.005		DRAWN	BARRETT	12/21/10	MATERIAL
3. IDENTIFY P/N & MAIL P.O. USING 1/8 TO 1/4 ETCHED LETTERS, DENOTED BY "X"		CHECKED	MFG		
4. REMOVE BURRS & SHARP EDGES WITH 1/64x45° MAX		APPROVED	DSB		
5. MACHINED FILET RADII SHALL BE 1/32		THIRD ANGLE PROJECTION		WEIGHT	7857.894 LBS.
6. FINAL SURFACE ROUGHNESS AVG. (Ra) SHALL BE ≤ 250 MICROINCHES		REV A		SHEET 1 OF 4	
7. ○ DENOTES CRITICAL DIMENSION; 100% INSPECTION REQUIRED		REV A		SHEET 1 OF 4	
8. A TRIANGLE DENOTES A REVISION		REV A		SHEET 1 OF 4	
9. INTERPRET DRAWING PER ASME Y14.5-2009		REV A		SHEET 1 OF 4	

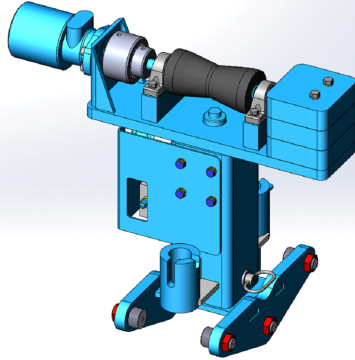
RELEASED FOR PRODUCTION

STANDARD ACCESSORIES

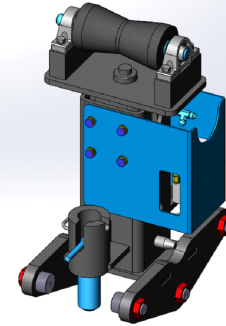
HYDRAULIC SUPPORT STAND



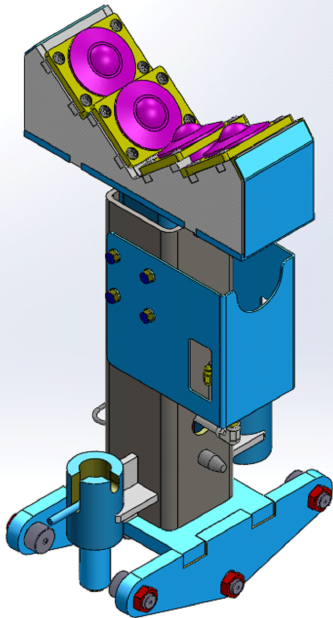
HYDRAULIC POWERED V-ROLLER SUPPORT STAND



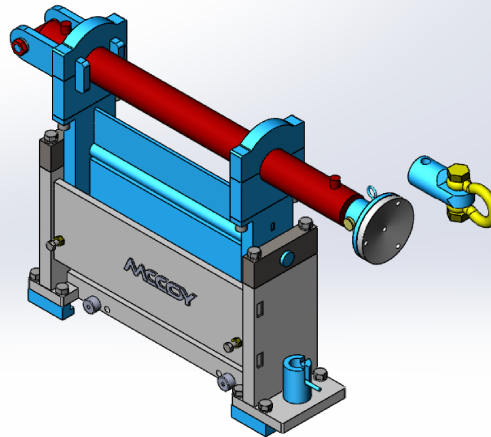
HYDRAULIC NON-POWERED V-ROLLER SUPPORT STAND



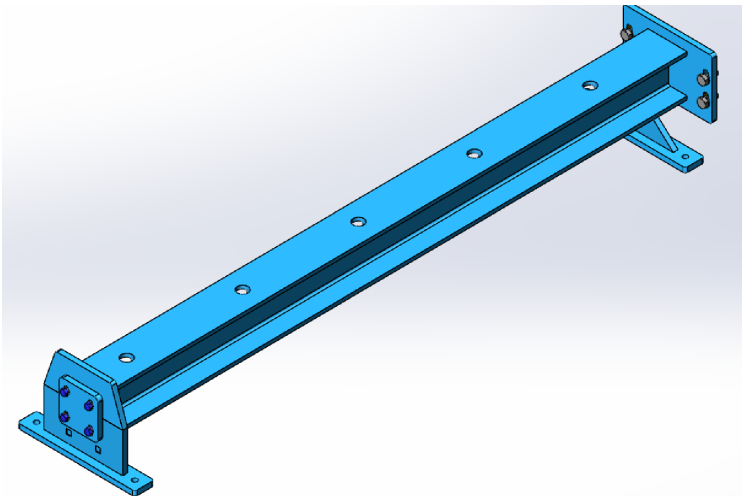
HYDRAULIC TRANSFER BALL ROLLER SUPPORT STAND



PUSH PULL

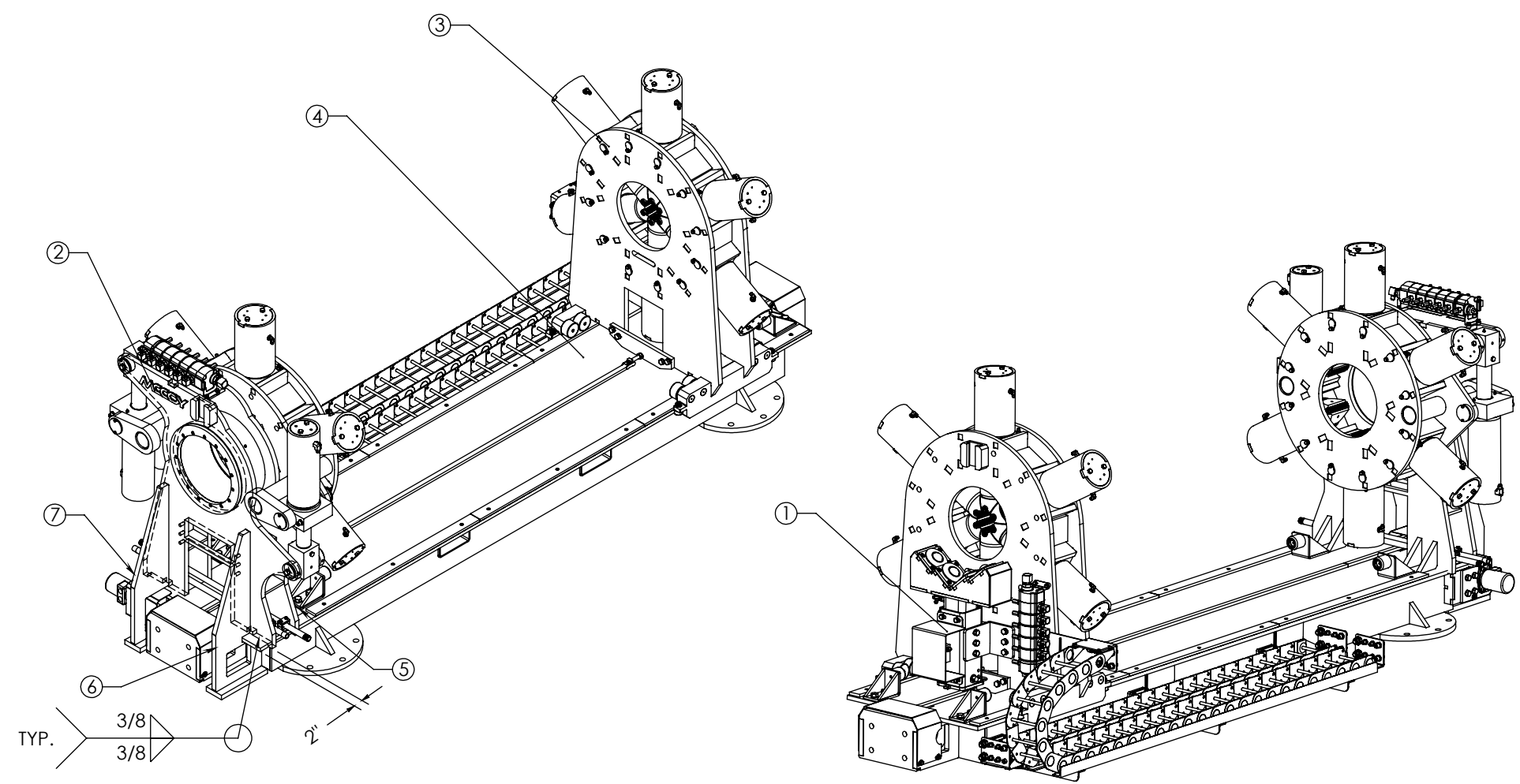


EXTENSION BEAM
(AVAILABLE FROM 6' TO 20')

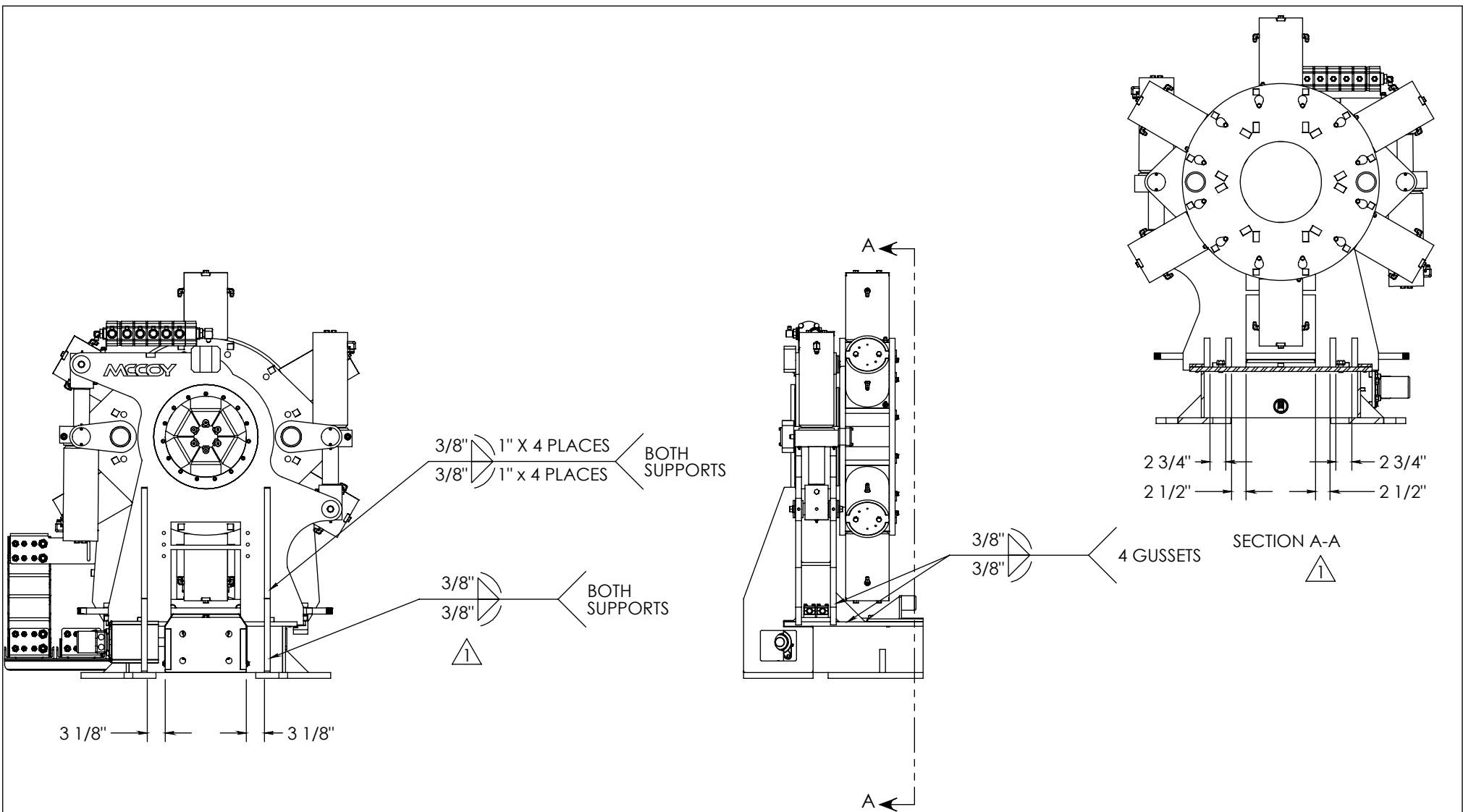


DESCRIPTION		
ASSEMBLY, BUCKING UNIT, 13 1/2 BACKUP, 190K BREAKOUT, 12FT		
SIZE	PART NO.	REV
A	RP3014	A
MATERIAL	N/A	SHEET 2 OF 4

ITEM	QTY	P/N	DESCRIPTION
1	1	1130-3000	ASSEMBLY, SUPPORT, TAILSTOCK
2	1	200-3500-1	ASSEMBLY, HEADSTOCK
3	1	300-3500-2	ASSEMBLY, TAILSTOCK
4	1	500-3000-1	ASSEMBLY, SKID
5	4	HGC-3000	GUSSET, HEADSTOCK
6	1	HGA-3000	WELDMENT, END, SHAFT
7	1	HGB-3000	WELDMENT, END, MOTOR



DESCRIPTION			
ASSEMBLY, BUCKING UNIT, 13 1/2 BACKUP, 190K BREAKOUT, 12FT			
SIZE	PART NO.	REV	
B	RP3014	A	
MATERIAL	N/A	SHEET 3 OF 4	



DESCRIPTION		
ASSEMBLY, BUCKING UNIT, 13 1/2 BACKUP,		
SIZE	PART NO. 190K BREAKOUT, 12FT	REV
A	RP3014	A
MATERIAL	N/A	SHEET 4 OF 4