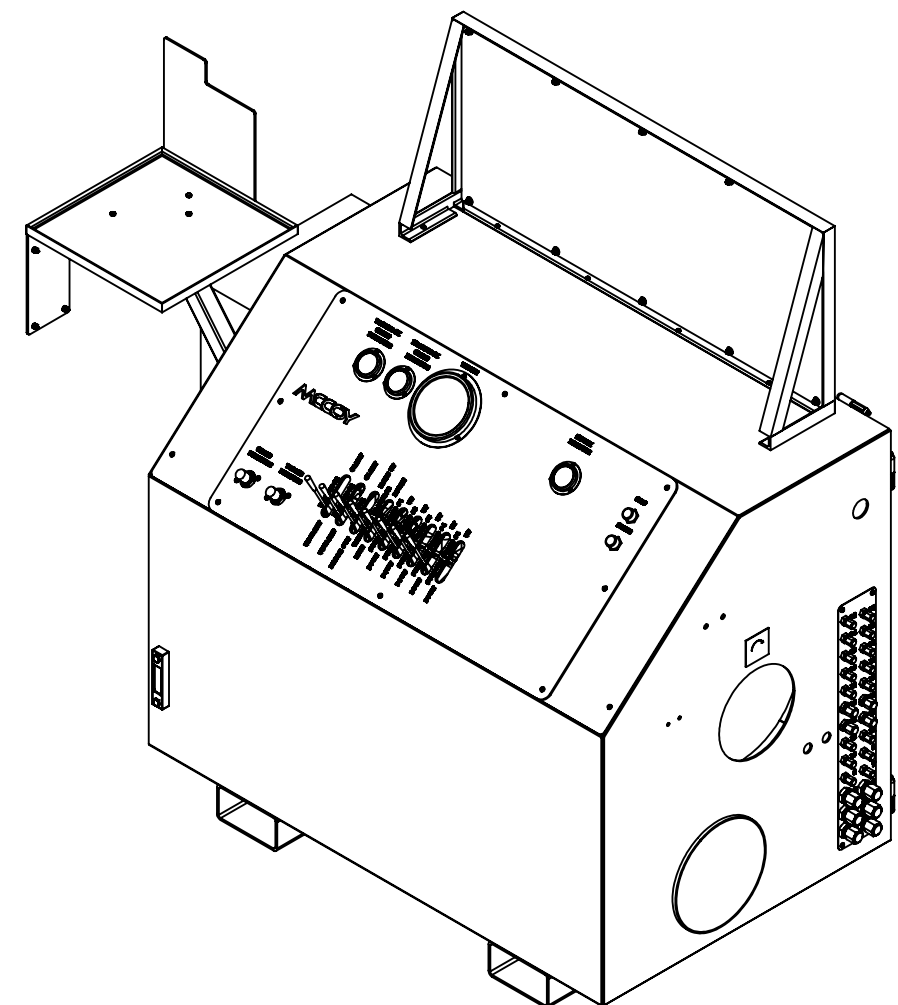
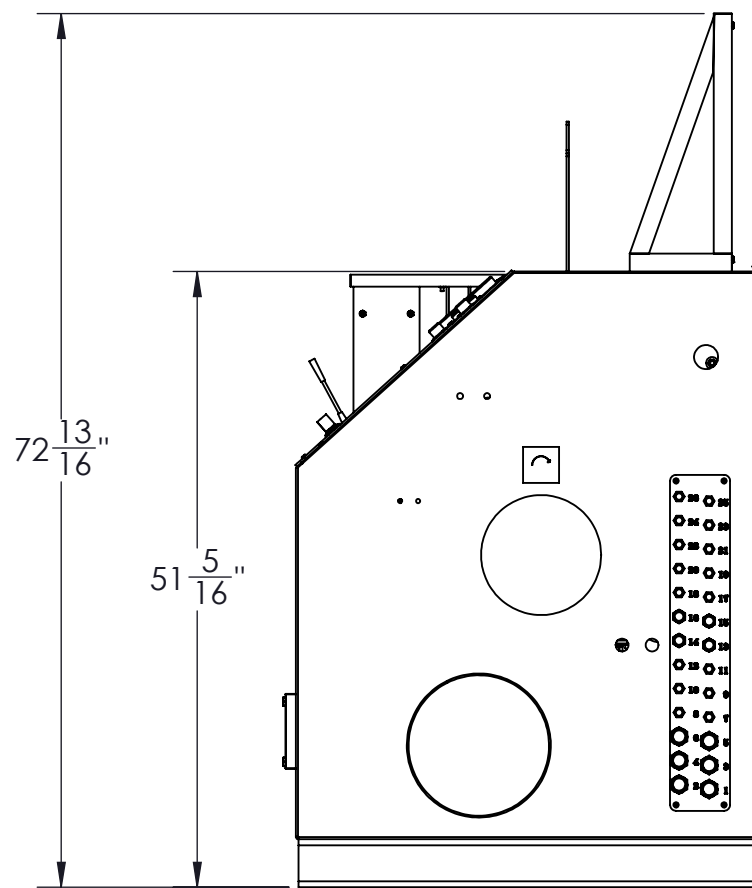
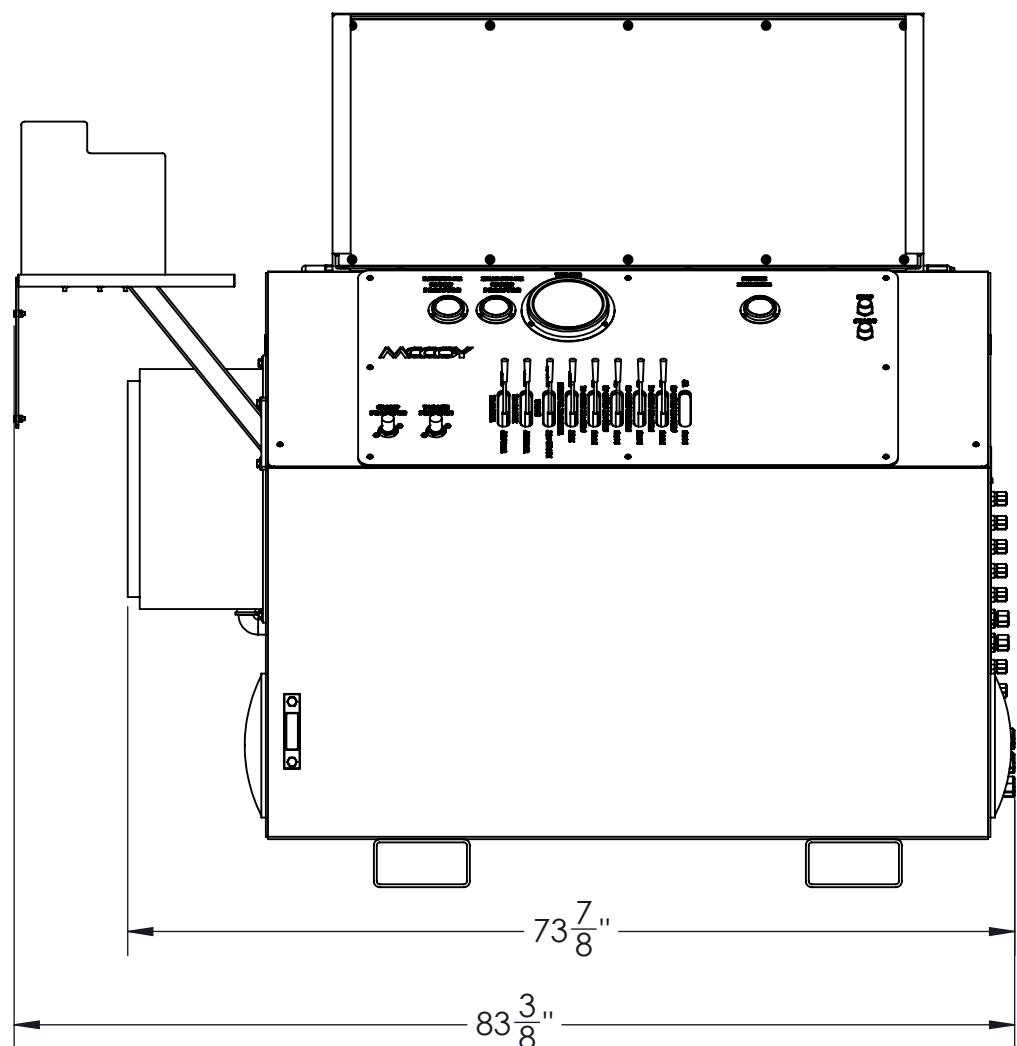
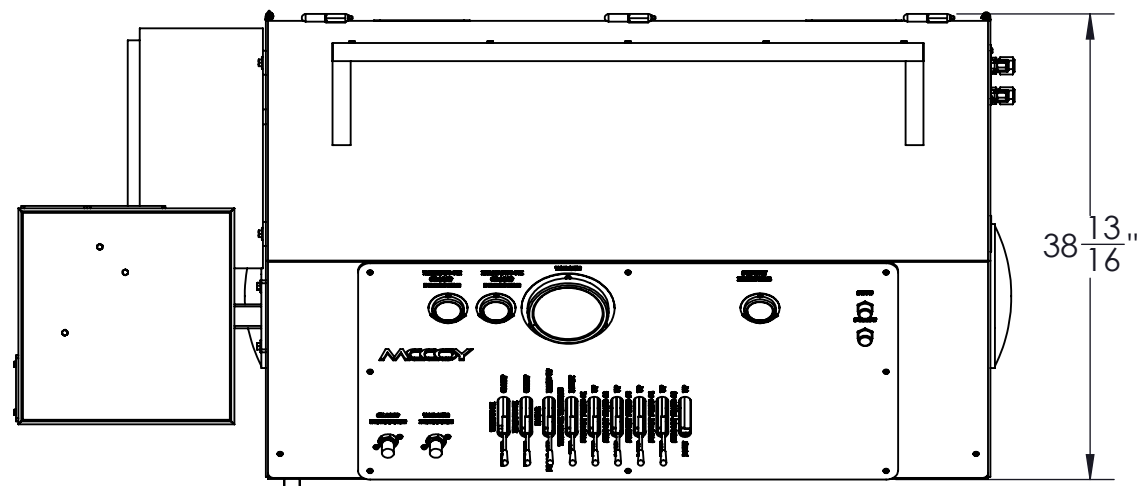


**RP5047-2002 SPECIFICATIONS**

POWER REQUIREMENT	3 PHASE 480 V, 60 Hz	3 PHASE, 380 V 50 Hz	3 PHASE, 240V, 50 Hz
FULL LOAD / INRUSH CURRENT	59.2 A / 213 A	74.8 A / 269 A	118 A / 426 A
MAXIMUM OPERATING PRESSURE	3000 PSI / 207 BAR		
MAXIMUM MOTOR OUTPUT	50 HP		
MAXIMUM HYDRAULIC FLOW	47 GPM / 178 LPM		
HYDRALUIC RESERVOIR CAPACITY	90 GALLON / 341 L		
OIL REQUIREMENT	AW-68		
SPECIAL FEATURES	8 BANK VALVE		



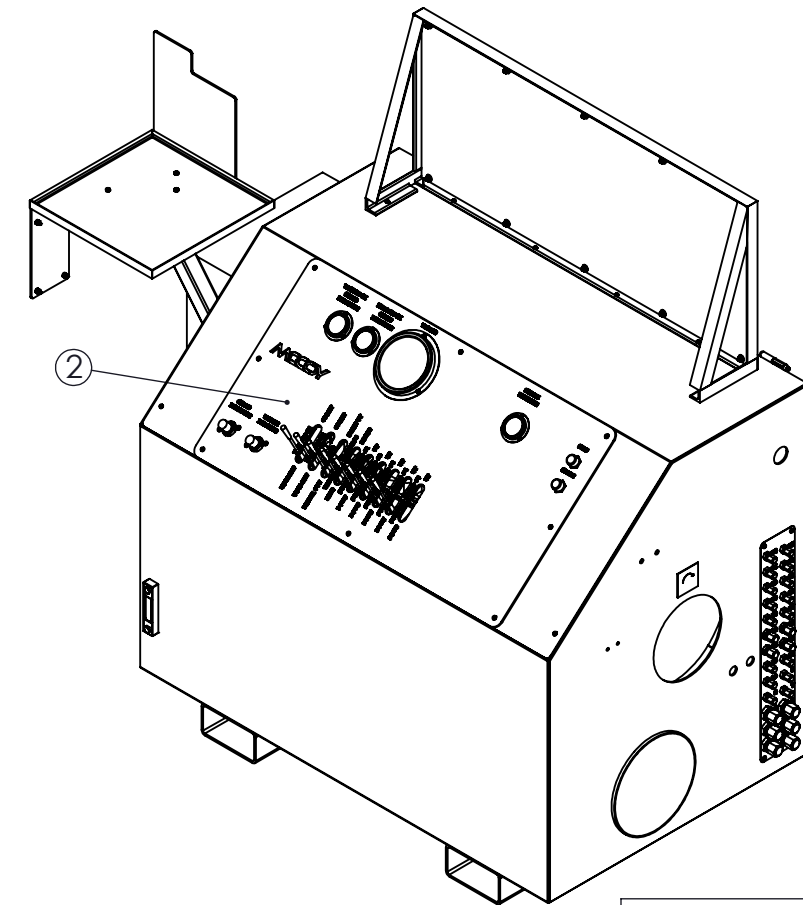
RELEASED FOR PRODUCTION

REVISIONS				
REVISION	ECO NUMBER	ECO DESCRIPTION	ECO COMPLETED BY	ECO COMPLETED DATE
01	13-0463	SEE ECN COPY	J.KELLY	08/13/2013
A	17-0101	ADDED GA SPECIFICATION SHEET; UPDATED BOM	M.BUDDEN	5/10/2017

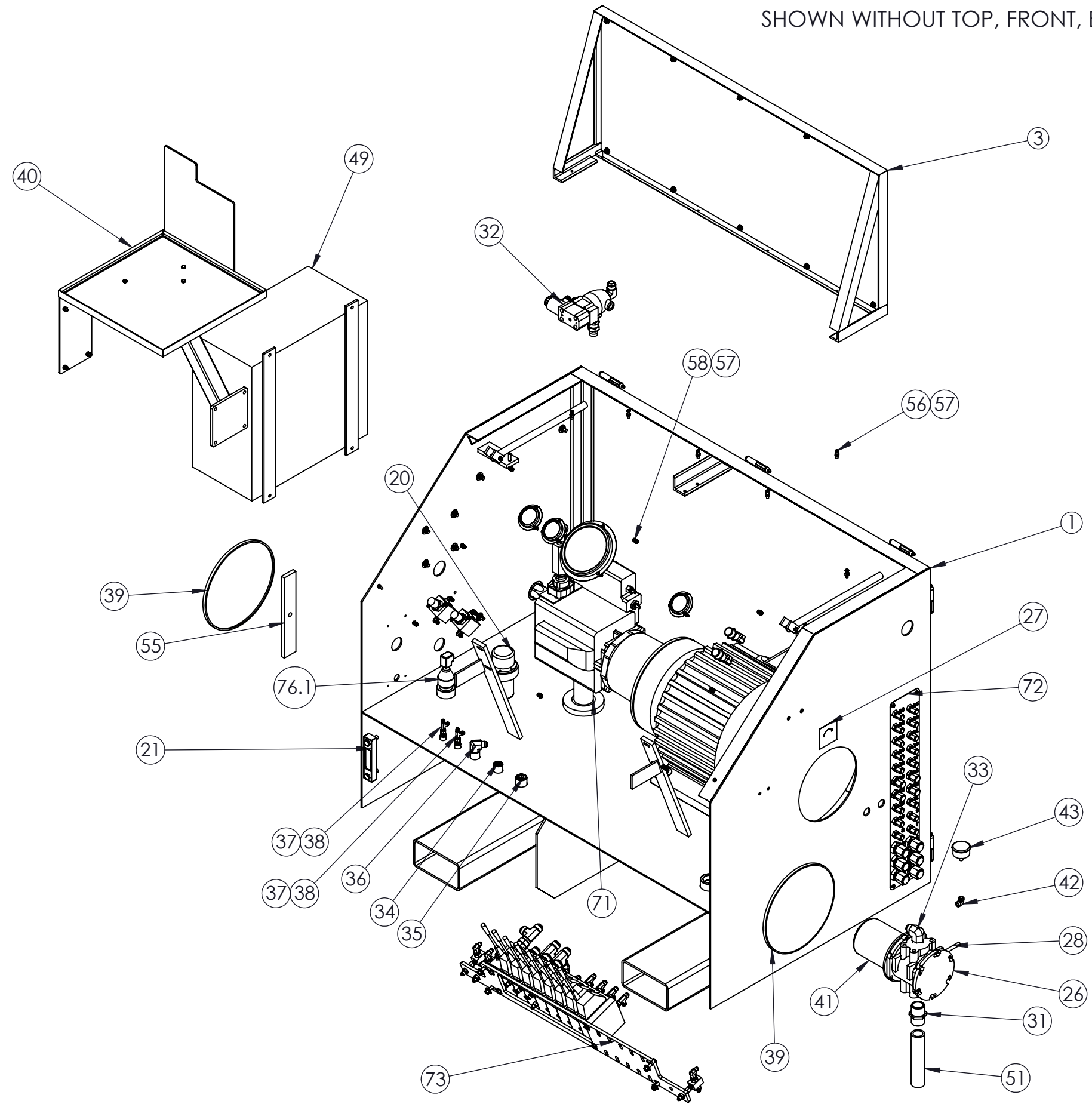
<small>UNLESS OTHERWISE SPECIFIED:                  1. DIMENSIONS ARE IN INCHES                  2. TOLERANCES:                  ANGULAR ± .1°                  FRACTIONAL ± 1/16                  TWO PLACE DECIMAL ± 0.02                  THREE PLACE DECIMAL ± 0.005                  3. IDENTIFY P/N &amp; MAIL P.O. USING 1/8 TO 1/4 ETCHED LETTERS, DENOTED BY "X"                  4. REMOVE BURRS &amp; SHARP EDGES WITH 1/64x45° MAX                  5. MACHINED FILET RADI SHALL BE 1/32                  6. FINAL SURFACE ROUGHNESS AVG. (Ra) SHALL BE ≤ 250 MICROINCHES                  7. ◻ DENOTES CRITICAL DIMENSION:                  100% INSPECTION REQUIRED                  8. A TRIANGLE DENOTES A REVISION                  9. INTERPRET DRAWING PER ASME Y14.5-2009</small>	<b>PROPRIETARY STATEMENT</b> THIS DOCUMENT IS THE PROPERTY OF MCCOY CORPORATION AND IS CONSIDERED CONFIDENTIAL. THIS INFORMATION MAY NOT BE USED, DISCLOSED, COPIED, OR REPRODUCED IN ANY FORM, WITHOUT THE EXPRESS WRITTEN CONSENT OF MCCOY CORPORATION.		DESCRIPTION 	
	DRAWN	S.MCCROSKY	6/11/2013	ASSEMBLY, POWER UNIT/CONSOLE, 8 BANK
	CHECKED	B.PEARCE	6/11/2013	SIZE PART NO.
	APPROVED	B.PEARCE	6/11/2013	B RP5047-2002
THIRD ANGLE PROJECTION	WEIGHT	3239 LBS.	MATERIAL	N/A
			REV	A
			SHEET 1 OF 7	

ITEM	QTY.	P/N	DESCRIPTION	ITEM	QTY.	P/N	DESCRIPTION	ITEM	QTY.	P/N	DESCRIPTION
1	1	100-6500-7	WELDMENT, CONSOLE, HPU	30	3	133-6500	2-1/2" 0-3000 PSI GAUGE	75.5	2	H12-63-FJFJ5K	3/4 HOSE X 63 LONG FJIC X FJIC 5000 PSI
2	1	2000-08-01	PLATE, OVERLAY, BANK	31	1	1463	NIPPLE, HEX, 1 1/4"	75.6	1	H12-45-FJFJ9	3/4 HOSE X 45 LONG FJIC X FJIC 90 3000 PSI
3	1	CBCS500	CONSOLE SHIELD ASSEMBLY	32	1	RPDV5047-3501	DUMP VALVE ASSEMBLY	75.7	1	H8-57-FJFJ	1/2 HOSE X 57 LONG FJIC X FJIC
4	1	KITRPEM-01	KIT, MOTOR, ELECTRIC, 50 HP	33	1	2501-12-20	FITTING, 90 DEG. ELBOW, 1 1/4" MNPT X 3/4" MJIC	75.8	1	H8-32-FJFJ	1/2 HOSE X 32 LONG FJIC X FJIC
4.1	1	CB11081	BUTTON, START	34	1	1609-A	PLUG, FLUSH, 1/2"	75.9	2	H6-64-FJFJ	3/8 HOSE X 64 LONG FJIC X FJIC 3000 PSI (TOUGH COVER)
4.2	1	CB11080	BUTTON, STOP	35	1	1610	FITTING, 3/4 MNPT, PLUG	75.10	4	H4-26-FJFJ9	1/4 HOSE X 26 LONG FJIC X FJIC 90 DEG. 3000 PSI
4.3	1	CB11085-01	CONTACT, BLOCK, NC	36	1	1626	FITTING, 1/2 MNPT, 1/2 MJIC, ELBOW	75.11	1	H4-120-FJFJ	1/4 HOSE X 120 LONG FJIC X FJIC
4.4	1	CB11085	CONTACT, BLOCK, NC	37	2	1562	FITTING, 1/4 MNPT, 1/4 MJIC, STRAIGHT	75.12	2	H4-34-FJFJ9	1/4 HOSE X 34 LONG FJIC X FJIC 90 3000 PSI
4.5	1	CB11099	BUSHING, REDUCER, 2 X 1	38	2	4R6X-S	FITTING, 1/4 FJIC SWIVEL, 1/4 MJIC, RUN TEE	75.13	1	H4-48-FJFJ9	1/4 HOSE X 48 LONG FJIC X FJIC 90 3000 PSI
4.6	1	CB11099-01	FITTING, 1 CARLEX	39	2	SEC-12	COVER, CLEANOUT	75.14	2	H4-48-FJFJ	1/4 HOSE X 48 LONG FJIC X FJIC 3000 PSI
4.7	1	CB11099-03	FITTING, CARFLEX, 1, 90 DEGREE, REXEL CARLON LT20F	40	1	CLEBU1210-03	WELDMENT, TRAY, COMPUTER	75.15	2	H4-30-FJFJ	1/4 HOSE X 30 LONG FJIC X FJIC
4.8	1	PU5060-S2	MOTOR, ELECTRIC, 50HP, TEFC, 480 VAC, 60HZ	41	1	P165875	FILTER ELEMENT	75.16	1	H4-29-FJFJ9	1/4 HOSE X 29 LONG FJIC X FJIC 90 DEG 3000 PSI
4.9	1	CB11099-02	HOSE, CARFLEX, 1, 5FT LONG, REXEL CAR 15008-100	42	1	1652-A	90 1/8 " FNPT X 1/8" FNPT	75.17	1	H4-39-FJFJ	1/4 HOSE X 39 LONG FJIC X FJIC
4.10	1	RX-53	WIRE, BLACK, REXEL THHN4STRBLK500RL	43	1	LFT-134-2	GAUGE FILTER 2 IN FACE 60 PSI .125 NPT	75.18	1	H4-42-FJFJ9	1/4 HOSE X 42 LONG FJIC X FJIC 90 3000 PSI
4.11	1	RX-54	WIRE, GREEN, 8 FT, REXEL THHN6STRGRN5000RL	44	2	173-6500	TUBE, UPRIGHT	76	1	KITFIT-RPEPU	ASSEMBLY, LEVEL SWITCH
4.12	3	PBTS-2-1-0	CONNECTOR, INSULATED, MULTI-TAP, REXEL PBTS-2-1/0	45	1	1467	ADAPTER, 3/4MNPT X 3/4MJIC, STRAIGHT	76.1	1	1871	BELL RED GV, 1 1/4 X 1/2
4.13	1	RX-11	CONNECTOR, 1/2, REXEL CH CGB194-SA	46	1	12G6X	FITTING, SWIVEL, 3/4 FNPT X 3/4 FJIC, STRAIGHT	76.2	1	1875	FITTING, REDUCER, 1/2 MNPT, 1/4 FNPT
4.14	1	RX-12	CONNECTOR, 1/2, REXEL CGB192 SA	47	1	1588	FITTING, 3/4 FNPT, 3/4 FNPT, ELBOW	76.3	1	1872	FITTING, NIPPLE, 1/2, CLOSE, GALV.
4.15	2	RX-13	NUT, LOCK, 1/2, STEEL, REXEL EGS L-100	48	2	1404	FITTING, 3/4 MNPT, 3/4 MNPT, 8, STRAIGHT, SCH80	76.4	1	1873	FITTING, NIPPLE, 1 1/4, CLOSE, GALVANIZED
4.16	1	RX-18	ELBOW, PULLING, 1/2, 90 deg, REXEL FFL-50	49	1	RP480-A202010LP	BOX, ELECTRICAL, 380V TO 480V	76.5	1	1874	COUPLING, MERCHANT, 1/4
4.17	1	RX-55	WIRE, SHIELDED, START/STOP, 15 FT, REXEL P09G4-18-4	50	1	2STRAINER	STRAINER, SUCTION, 2 FNPT	76.6	1	1877	PIPE NIPPLE, 1/4 X8 MNPT
4.18	1	RX-10	RECEPTACLE, FEMALE, 10A, REXEL WOO 1R3004A20A120	51	1	PN20-7500	FITTING, 1 1/4 MNPT X 1 1/4 MNPT, 7.5 IN, STRAIGHT, SCH 80 (PIPE NIPPLE)	77	2	RPVBADPM	ASSEMBLY, RELIEFE VALVE
4.19	1	RX-9	RECEPTACLE, MALE, 10A, REXEL WOO 103002A01F030	52	1	W43-16-16U	FLANGE KIT, 1 FNPT, CODE 61				
5	1	PU2500-H6	Pump/ Motor Mounting Adapter SAE C 4 bolt x 7.62" long	53	1	EBWOO 1R3004A20A120	3P 10A FEM RCPT				
6	1	7003638	HYDRAULIC PUMP 75cc, LS JRRO75C-LS-21-20-NN-N-3-S1N2 -A2N-NNN-NNN-NNN	54	1	PU4060-S33	SWITCH, FLOAT, 1/4 MNPT				
7	1	570H	HYTREL INSERT (SPIDER)	55	2	12002000	BAR, MOUNTING, HATCH COVER				
8	1	PU2500-H18	SHAFT COUPLING, PUMP, 14T, 12/24 SPLINE, MfgNo : M500A1412C	56	6	SST-18	SCREW, BUTTON HEAD, 1/4-20 X 1, STAINLESS				
9	4	202	SCREW, HEX, 5/8-11, 2 1/2, STEEL, GR8	57	14	1737	NUT, NYLOCK, 1/4-20 SS				
10	8	195-A	FLATWASHER, 5/8	58	14	SST-08	SCREW, BUTTON HEAD, 1/4-20/ 3/4				
11	4	194	NUT, HEX, 5/8-11, STEEL, GR8	59	16	1025	WASHER, FLAT, 3/8, STEEL, GR 8				
12	8	1151	LOCKWASHER, 5/8, STEEL, GR8	60	8	213	NUT, NYLOCK, 3/8-16, GR8				
13	1	8-10C5OX-S	FITTING, 5/8 MORB, 3/8 MJIC, 90 DEG	61	8	1048	SCREW, HEX, 3/8 - 16, 1 1/4, STEEL, GR8				
14	1	1486-A	FITTING, O-RING, 1/4 x 1/4 MJIC, 90	62	7	104	SCREW, HEX, 1/4-20, 3/4				
15	1	W43-32-32U	FLANGE KIT 2" FNPT	63	7	101	WASHER, LOCK, 1/4, GR8				
16	1	1679	HEX NIPPLE, REDUCING, 1 MNPT X 3/4 MNPT	64	7	100	NUT, HEX, 1/4-20, GR8				
17	1	CVH05-0750N	3/4 CHECK VALVE	65	9	CRSS20046	NUT, 8-32				
18	1	12CTX	FITTING, 3/4 MNPT, 3/4 MJIC	66	9	CRSS20044	SCREW, MACHINE, 8-32, 1				
19	1	PU4060-s6	MOTOR SHAFT COUPLING	67	3	CRSS20033	SCREW, MACHINE, 10-32, 1, STAINLESS STEEL				
20	1	PU4060-S30	FILLER CAP	68	3	CRSS20045	NUT, 10-32				
21	1	PU4060-S31	GUAGE, LEVEL / TEMPERATURE	69	2	108	SCREW, HEX HEAD, 1/4-20, 1 3/4				
22	1	RP04-200	2" SWING CHECK VALVE (FLAPPER VALVE)	70	2	212	NUT, NYLOCK, 1/4 - 20				
23	1	1394-A	2" STREET EL. LOW PRESSURE	71	1	D2375	ROD WIPER, 2 3/8 ID X 2 7/8 OD X 3/8 HGT X 1/4 BASE THK.				
24	1	PN32-C	PIPE NIPPLE, 2 X CLOSE, SCH 40	72	1	152-6500-1	ASSEMBLY, BULKHEAD				
25	1	PN32-10000	PIPE NIPPLE 2 IN X 10 IN LONG	73	1	RPVA5047-2002	ASSEMBLY, VALVE, 8 BANK				
26	1	P563268	FILTER HEAD W/ 1 1/4" FNPT PORTS	74	4	4-4GTX	1/4" MJIC X 1/4" FNPT				
27	1	RPTAG1	CLOCKWISE ROTATIONAL STICKER	75	1	KITHOSE-3502	HOSE KIT, RP STYLE HPU/ CONTROL CONSOLE ASSY (CONTINUOUSLY ROTATING HEAD)				
28	1	PN2-0300	PIPE NIPPLE, .125 X 3 MNPT, SCH 80	75.1	1	H12-30-FJFJ95K	3/4 HOSE X 30 LONG FJIC X FJIC 90 5000 PSI				
29	1	132-6500	GUAGE, 6 FACE, 3000 PSI	75.2	1	H12-65-FJFJ5K	3/4 HOSE X 65 LONG FJIC X FJIC 5000 PSI				
				75.3	2	H12-67-FJFJ	3/4 HOSE X 67 LONG FJIC X FJIC 3000 PSI				
				75.4	2	H12-65-FJFJ	3/4 HOSE X 65 LONG FJIC X FJIC 3000 PSI				



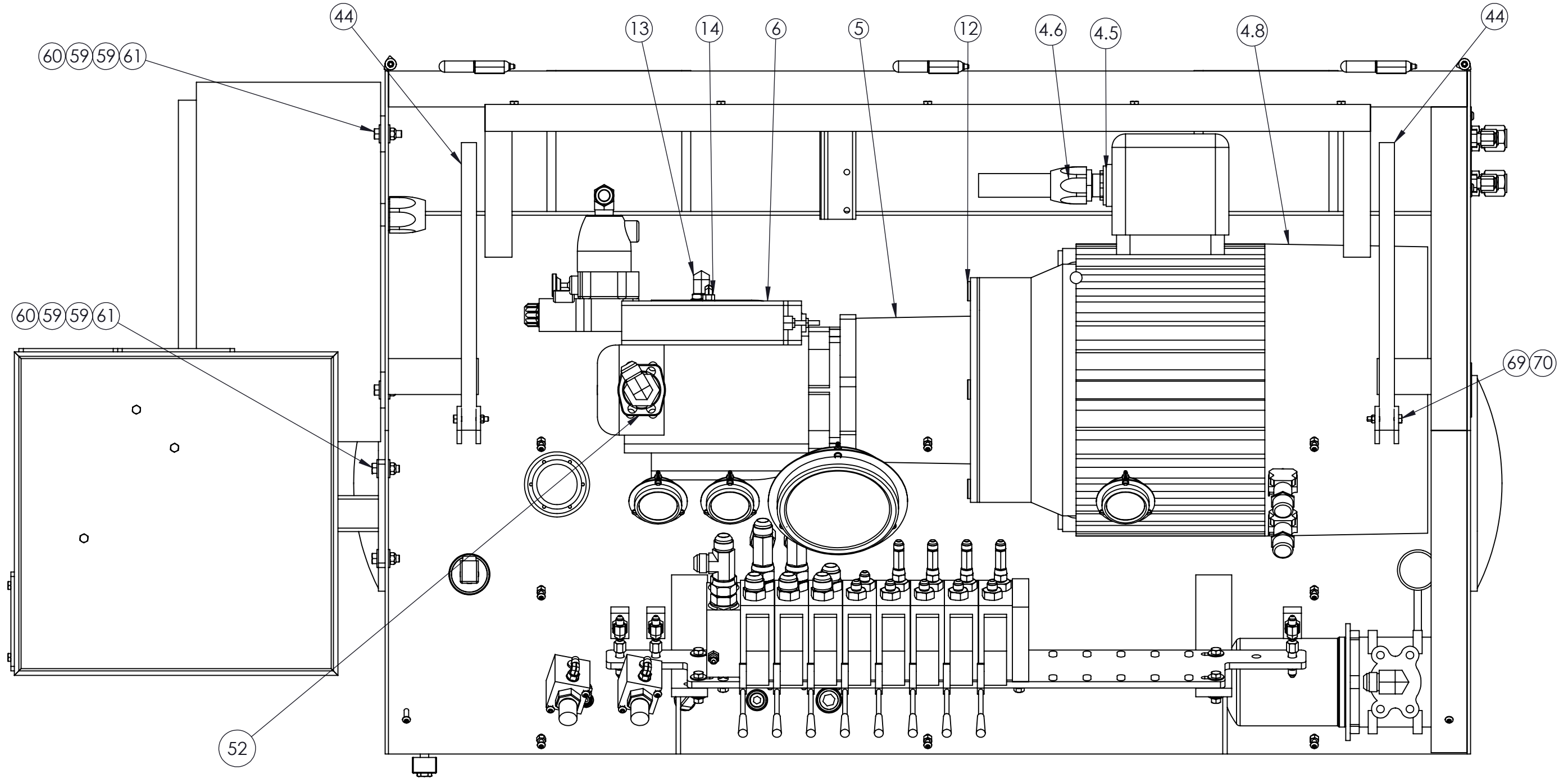
DESCRIPTION			
ASSEMBLY, POWER UNIT/CONSOLE, 8 BANK			
SIZE	PART NO.	REV	
B	RP5047-2002	A	
MATERIAL		SHEET 2 OF 7	
		N/A	

SHOWN WITHOUT TOP, FRONT, BOTTOM COVERS AND REDUCER BUSHING



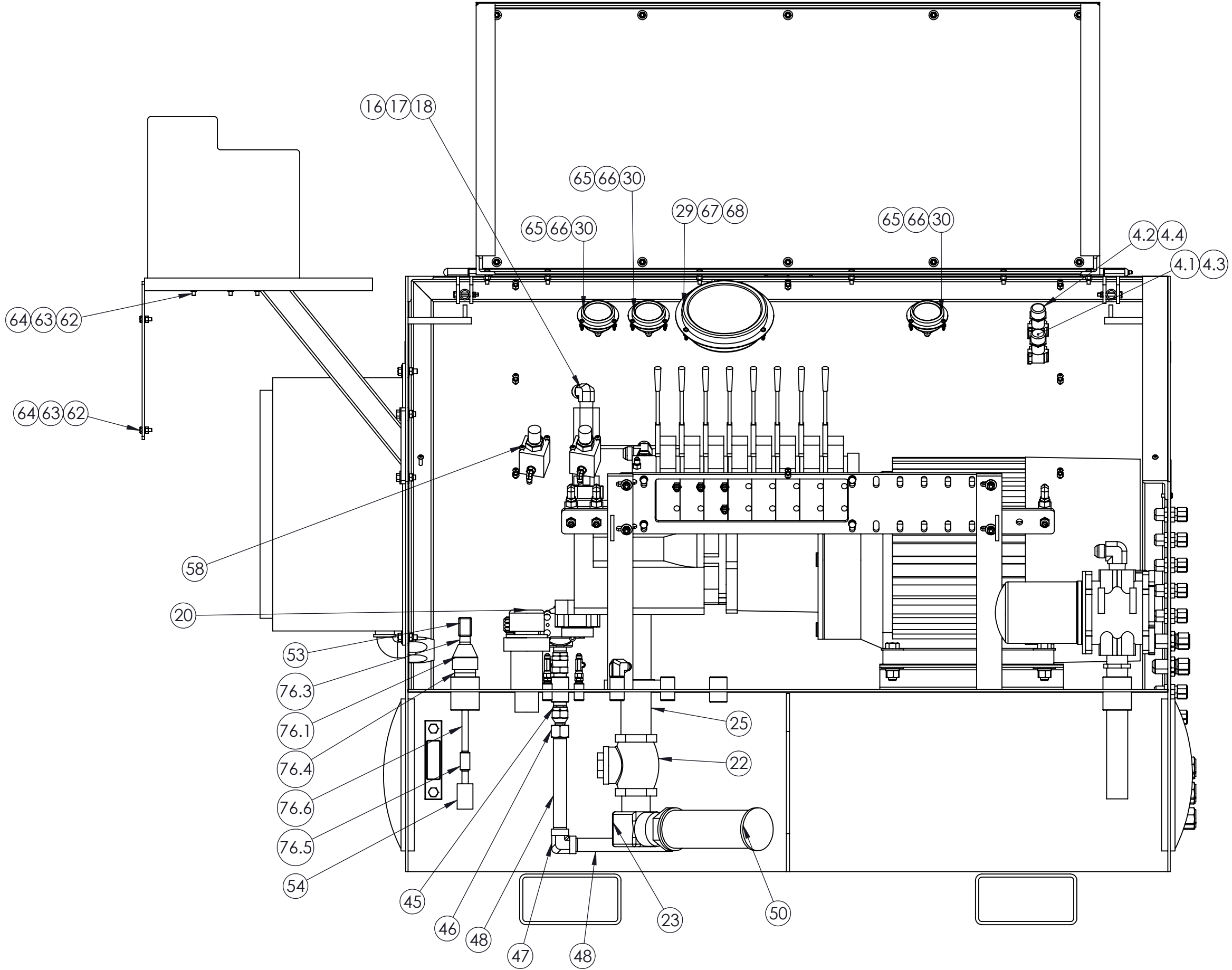
DESCRIPTION			
ASSEMBLY, POWER UNIT/CONSOLE, 8 BANK			
SIZE	PART NO.	RP5047-2002	REV 01
MATERIAL	N/A	SHEET 3 OF 7	

SHOWN WITHOUT FRONT, TOP COVERS



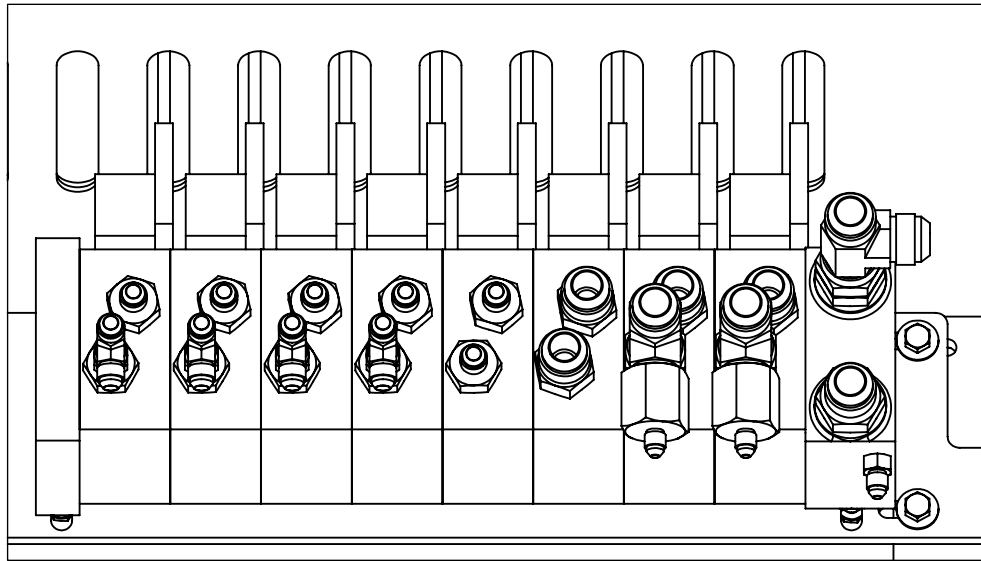
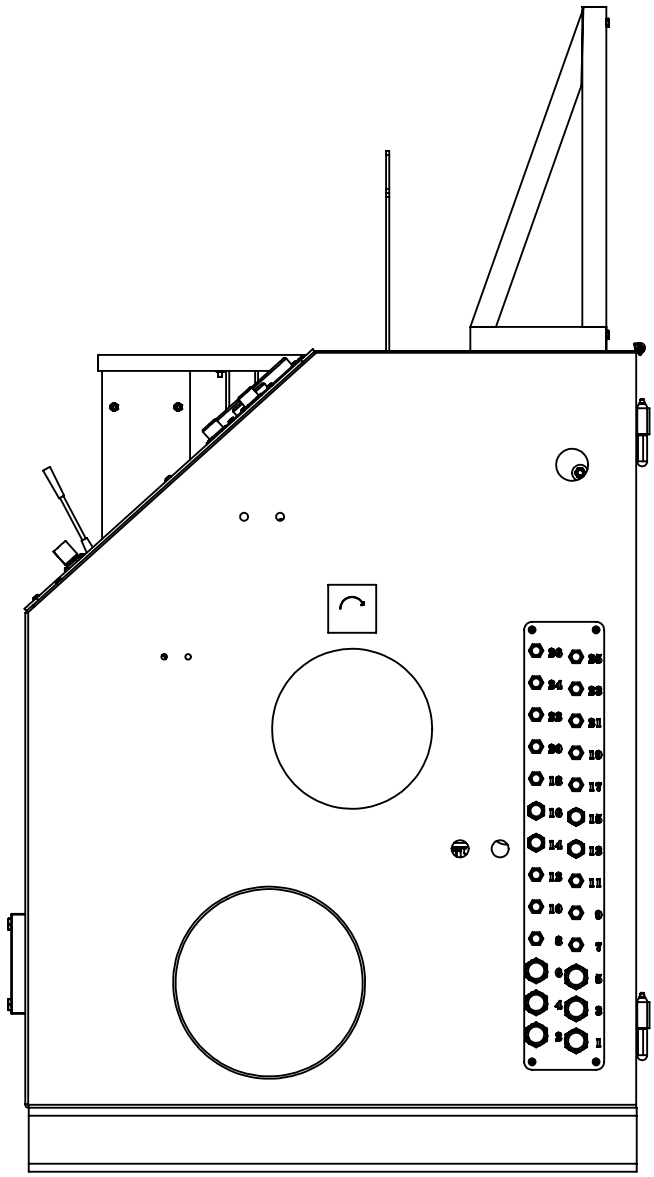
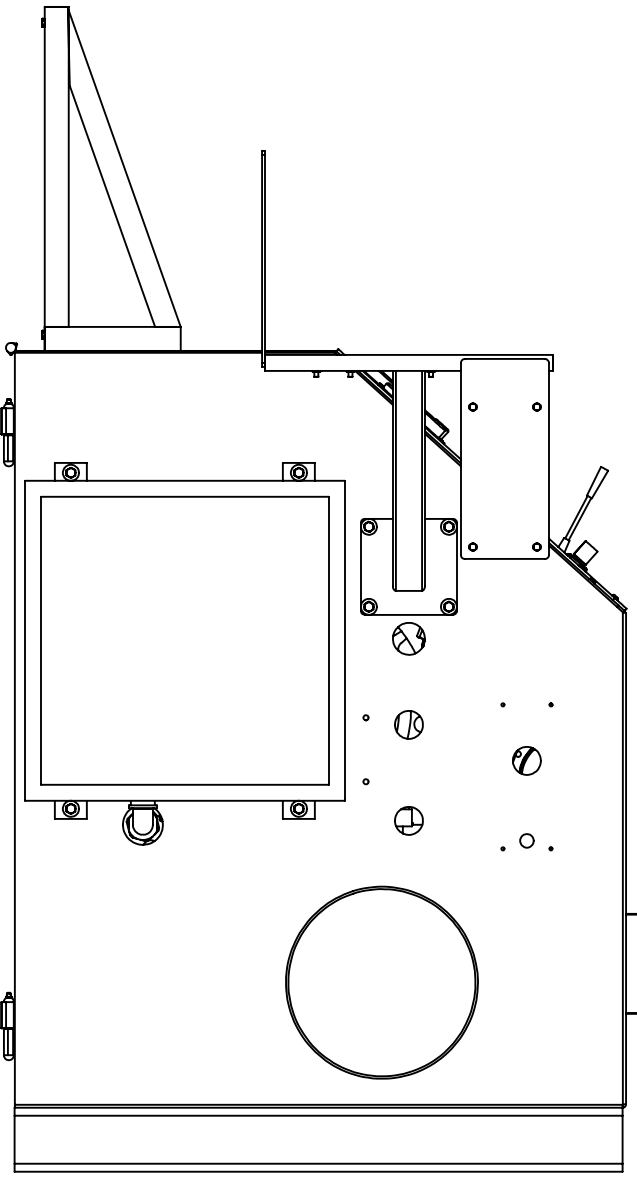
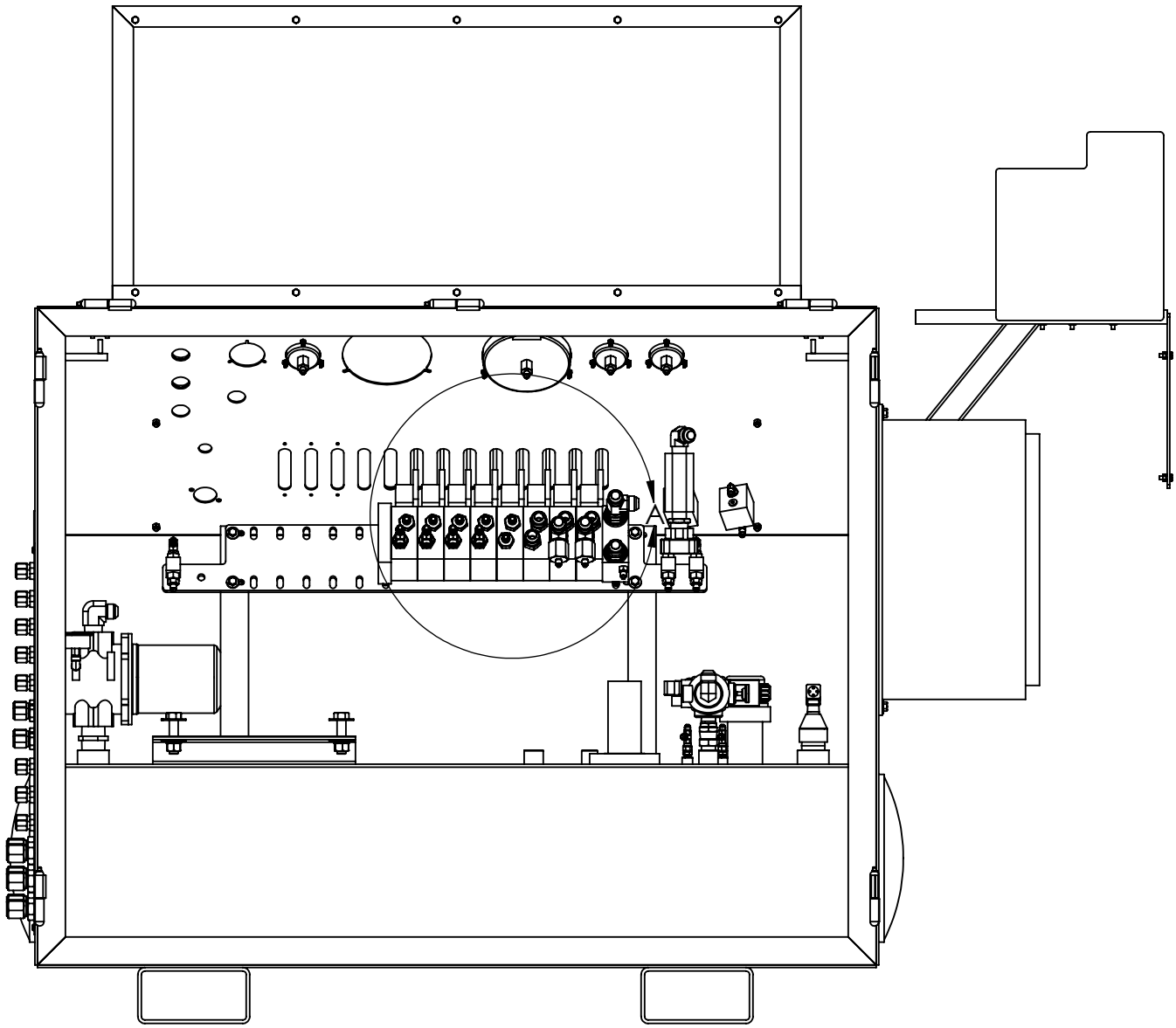
DESCRIPTION			
ASSEMBLY, POWER UNIT/CONSOLE, 8 BANK			
SIZE	PART NO.	REV	
B	RP5047-2002	01	
MATERIAL		SHEET 4 OF 7	
N/A			

SHOWN WITHOUT FRONT, BOTTOM AND TOP COVERS



DESCRIPTION			
ASSEMBLY, POWER UNIT/CONSOLE, 8 BANK			
SIZE	PART NO.	RP5047-2002	REV 01
MATERIAL	N/A	SHEET 5 OF 7	

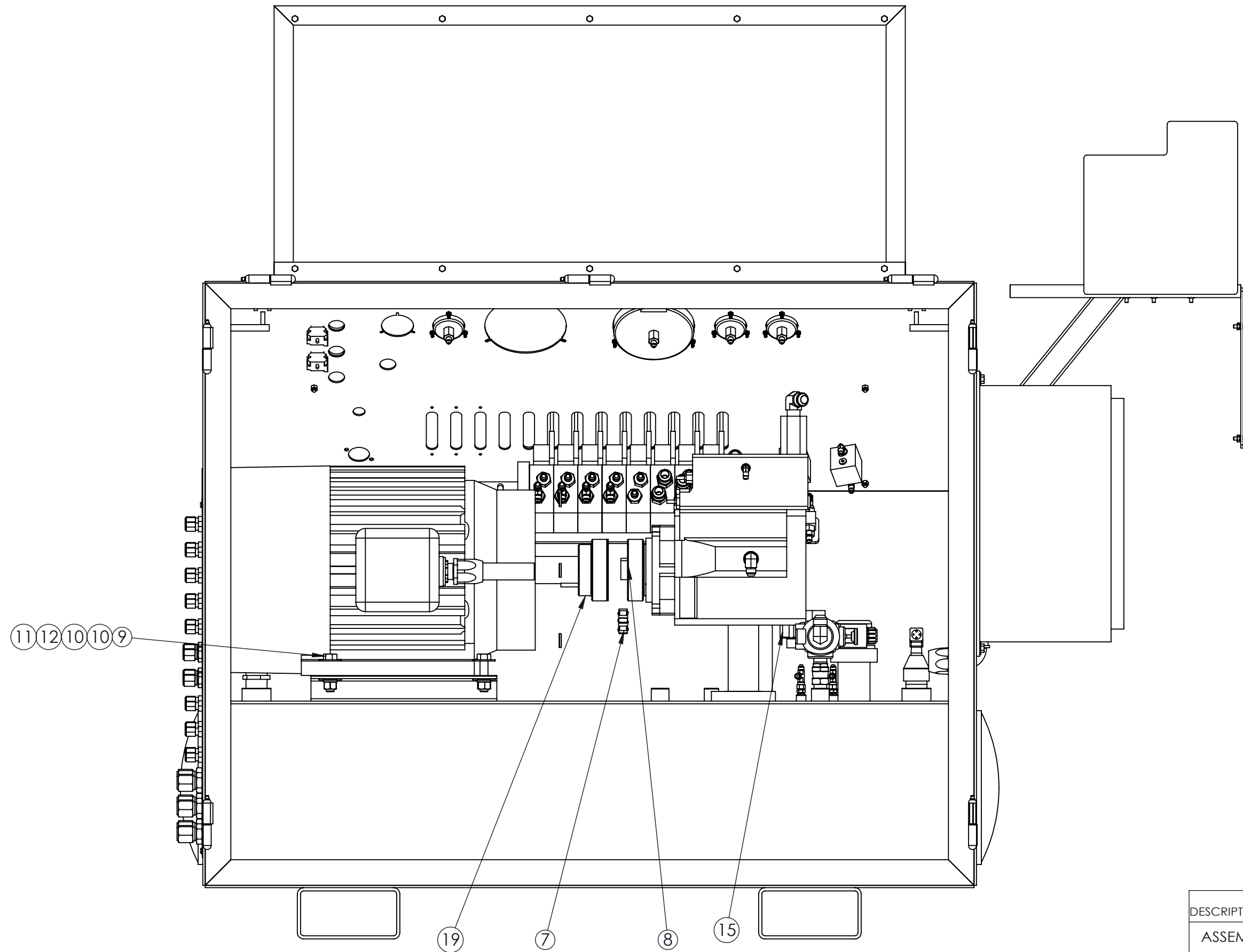
SHOWN WITHOUT BACK DOORS AND MOTOR/PUMP



DETAIL A

DESCRIPTION			
ASSEMBLY, POWER UNIT/CONSOLE, 8 BANK			
SIZE	PART NO.	REV	
B	RP5047-2002	A	
MATERIAL		SHEET 6 OF 7	
N/A			

SHOWN WITHOUT BACK DOORS AND PUMP/MOTOR MOUNTING ADAPTER



DESCRIPTION		
	ASSEMBLY, POWER UNIT/CONSOLE, 8 BANK	
SIZE	PART NO.	REV
B	RP5047-2002	01
MATERIAL	N/A	SHEET 7 OF 7