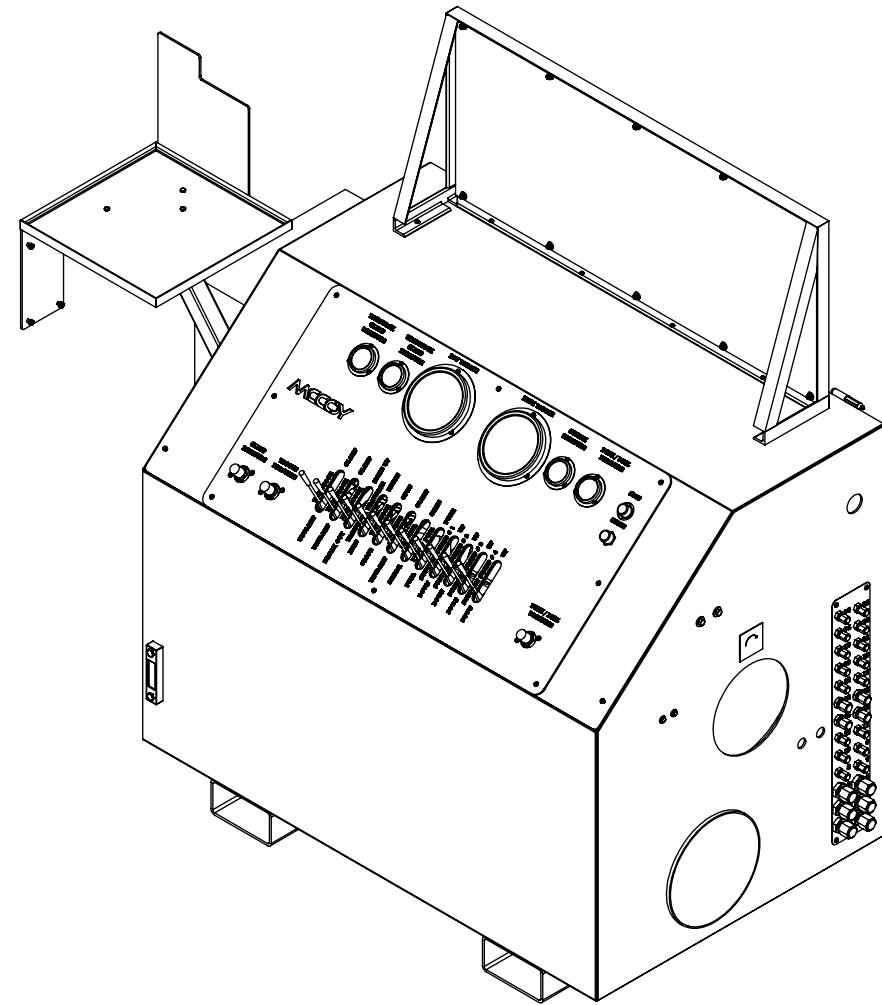


RP5047-3501 SPECIFICATIONS

POWER REQUIREMENT	3 PHASE 480 V, 60 Hz	3 PHASE, 380 V 50 Hz	3 PHASE, 240V, 50 Hz
FULL LOAD / INRUSH CURRENT	59.2 A / 213 A	74.8 A / 269 A	118 A / 426 A
MAXIMUM OPERATING PRESSURE	3500 PSI / 241 BAR		
MAXIMUM MOTOR OUTPUT	50 HP		
MAXIMUM HYDRAULIC FLOW	47 GPM / 178 LPM		
HYDRALUIC RESERVOIR CAPACITY	90 GALLON / 341 L		
OIL REQUIREMENT	AW-68		
SPECIAL FEATURES	12 BANK VALVE		



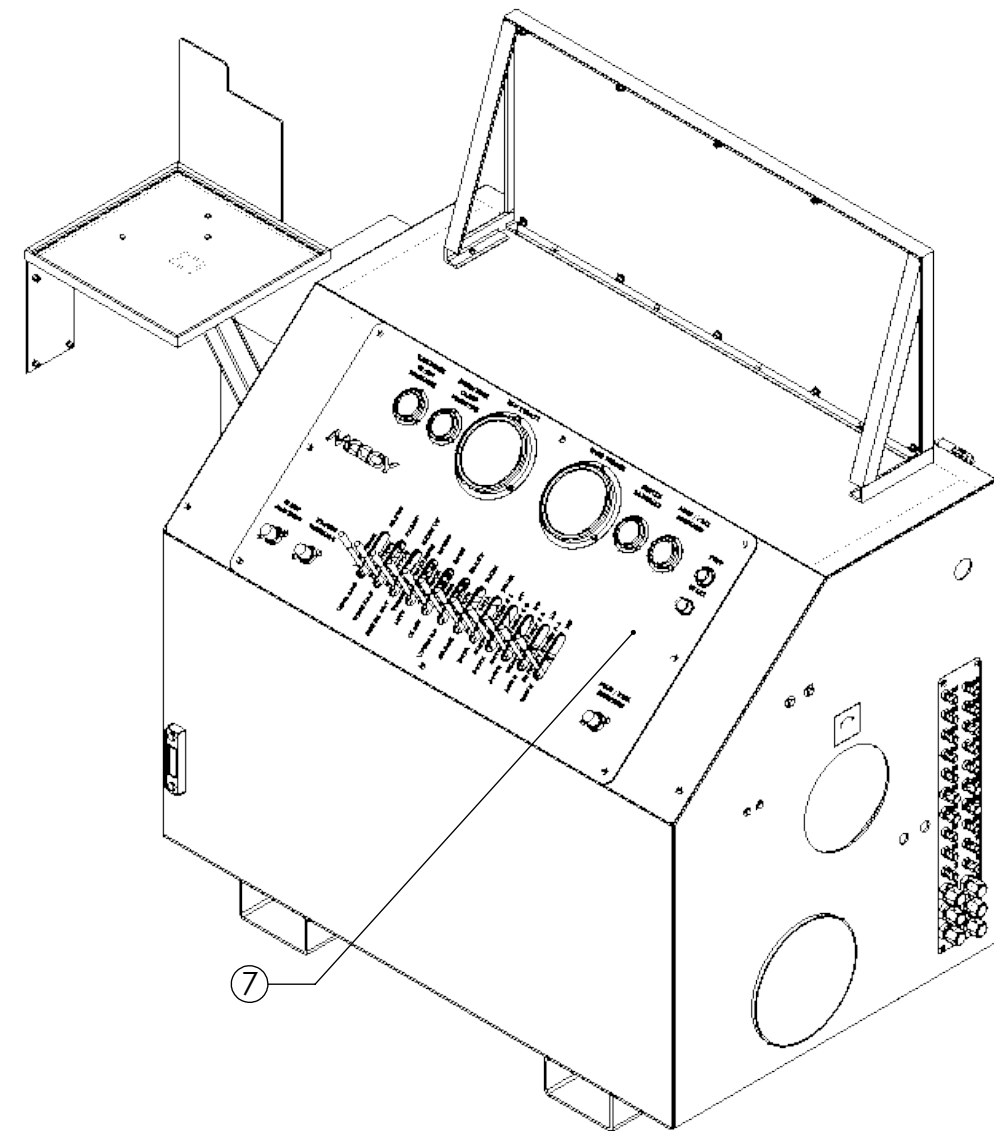
REVISIONS

REVISION	ECO NUMBER	ECO DESCRIPTION	ECO COMPLETED BY	ECO COMPLETED DATE
00	13-0463	SEE ECN COPY	J.KELLY	08/14/2013
A	17-0101	ADDED GA SPECIFICATION SHEET; REPLACE (1) RPVBADPM W/ (1) RPVBADPM-S	M.BUDDEN	5/10/2017

UNLESS OTHERWISE SPECIFIED:		PROPRIETARY STATEMENT THIS DOCUMENT IS THE PROPERTY OF MCCOY CORPORATION AND IS CONSIDERED CONFIDENTIAL. THIS INFORMATION MAY NOT BE USED, DISCLOSED, COPIED, OR REPRODUCED IN ANY FORM, WITHOUT THE EXPRESS WRITTEN CONSENT OF MCCOY CORPORATION.									
1. DIMENSIONS ARE IN INCHES 2. TOLERANCES: ANGULAR ± 1° FRACTIONAL ± 1/16 TWO PLACE DECIMAL ± 0.02 THREE PLACE DECIMAL ± 0.005 3. IDENTIFY P/N & MAIL P.O. USING 1/8 TO 1/4 ETCHED LETTERS; DENOTED BY "X" 4. REMOVE BURRS & SHARP EDGES WITH 1/64x45° MAX 5. MACHINED FILET RADII SHALL BE 1/32 6. FINAL SURFACE ROUGHNESS AVG. (Ra) SHALL BE ≤ 250 MICROINCHES 7. ○ DENOTES CRITICAL DIMENSION; 100% INSPECTION REQUIRED 8. A TRIANGLE DENOTES A REVISION 9. INTERPRET DRAWING PER ASME Y14.5-2009		DESCRIPTION				ASSEMBLY, POWER UNIT/ CONSOLE, 12 BANK					
DRAWN		T.TRAPPEY		10/09/2010		SIZE		PART NO.		REV	
CHECKED						B		RP5047-3501		A	
APPROVED		R.MASINGKAN		08/05/2011		MATERIAL		N/A		SHEET 1 OF 7	
THIRD ANGLE PROJECTION		WEIGHT		3274 LBS.							

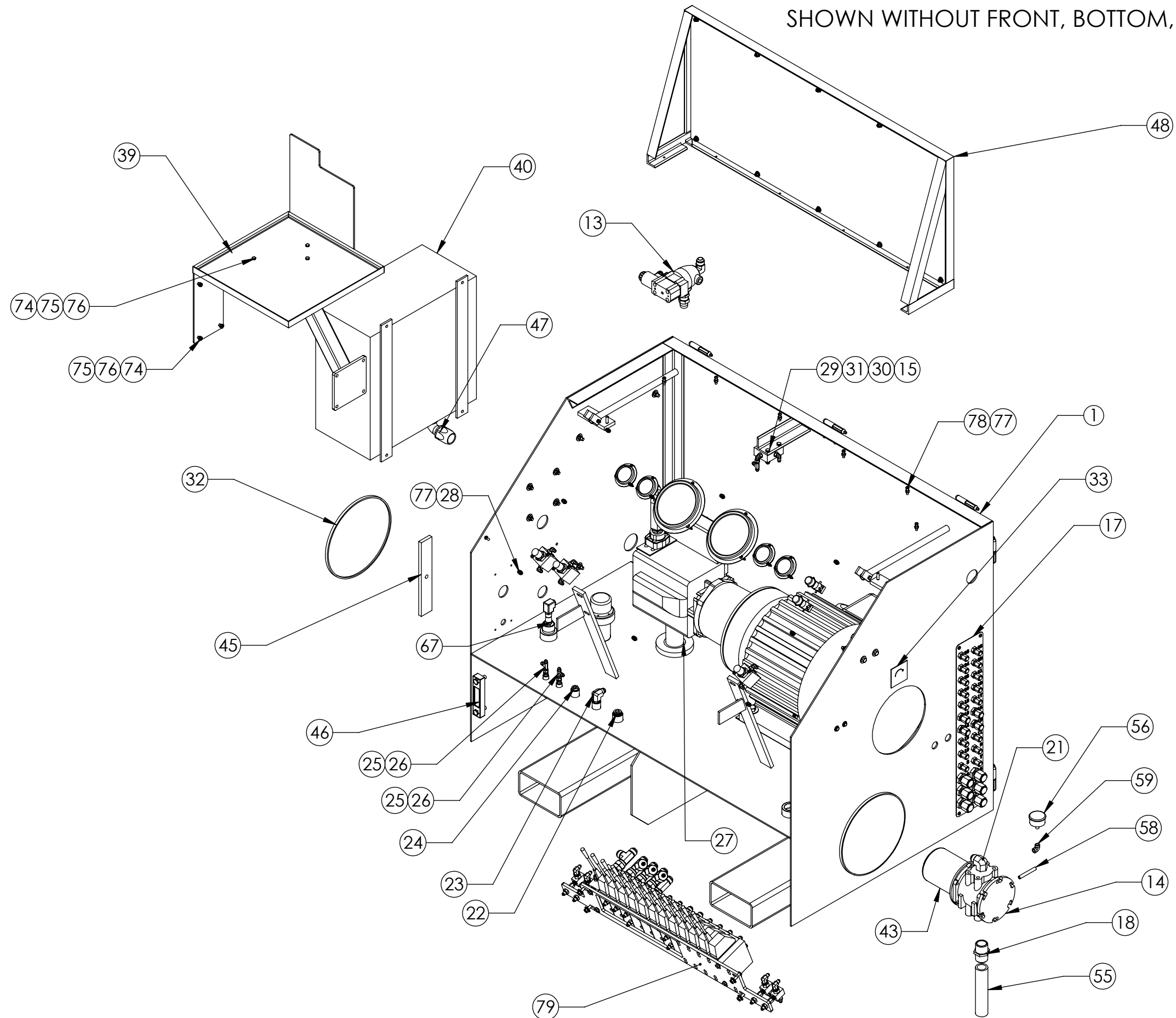
RELEASED FOR PRODUCTION

ITEM	QTY.	P/N	DESCRIPTION	ITEM	QTY.	P/N	DESCRIPTION
1	1	100-6500-12	CONSOLE WELDMENT F/ 12 BANKS	66	1	EBWOO 1R3004A20A120	3P 10A FEM RCPT
2	1	131-6500	GAUGE, 6, 3000 PSI	67	1	1490	BUSHING, REDUCER, 1/2 X 1/4
3	4	133-6500	2-1/2" 0-3000 PSI GAUGE	68	2	114	SCREW, HEX, 1/4-20, 3 1/2, GR8
4	2	173-6500	TUBE, UPRIGHT	69	4	1008-B2	WASHER, FLAT, 1/4, GR8
5	4	212	NUT, NYLOCK, 1/4 - 20	70	2	148	SCREW, CAP, HEX HEAD, 3/8-16 X 4, GR8
6	2	108	SCREW, HEX HEAD, 1/4-20, 1 3/4	71	20	1025	WASHER, FLAT, 3/8, STEEL, GR 8
7	1	3500-12	OVERLAY, BANK	72	10	213	NUT, NYLOCK, 3/8-16, GR8
8	1	132-6500	GUAGE, 6 FACE, 3000 PSI	73	8	1048	SCREW, HEX, 3/8 - 16, 1 1/4, STEEL, GR8
9	6	CRSS20033	SCREW, MACHINE, 10-32, 1, STAINLESS STEEL	74	7	100	NUT, HEX, 1/4-20, GR8
10	12	CRSS20044	SCREW, MACHINE, 8-32, 1	75	7	101	WASHER, LOCK, 1/4, GR8
11	6	CRSS20045	NUT, 10-32	76	7	104	SCREW, HEX, 1/4-20, 3/4
12	12	CRSS20046	NUT, 8-32	77	14	1737	NUT, NYLOCK, 1/4-20 SS
13	1	RPDV5047-3501	DUMP VALVE ASSEMBLY	78	6	SST-18	SCREW, BUTTON HEAD, 1/4-20 X 1, STAINLESS
14	1	P563268	FILTER HEAD W/ 1 1/4" FNPT PORTS	79	1	RPVA5047-3501	ASSEMBLY, VALVE, CONTROL
15	1	RPVECA	ASSEMBLY, VALVE, CONTROL	80	1	PU5060-S2	MOTOR, ELECTRIC, 50HP, TEFC, 480 VAC, 60HZ
16	3	RPVBADPM-S	ASSEMBLY, RELIEFF VALVE	81	1	7003638	HYDRAULIC PUMP 75cc, LS JRRO75C-LS-21-20-NN-N-3-S1N2 -A2N-NNN-NNN-NNN
17	1	152-6500-1	ASSEMBLY, BULKHEAD	82	1	PU2500-H18	SHAFT COUPLING, PUMP, 14T, 12/24 SPLINE, MfgNo : M500A1412C
18	1	1463	NIPPLE, HEX, 1 1/4"	83	1	PU2500-H6	Pump/ Motor Mounting Adapter SAE C 4 bolt x 7.62" long
19	1	1394-A	2" STREET EL. LOW PRESSURE	84	1	570H	HYTREL INSERT (SPIDER)
20	1	PN32-10000	PIPE NIPPLE 2 IN X 10 IN LONG	85	1	PU4060-s6	MOTOR SHAFT COUPLING
21	1	2501-12-20	FITTING, 90 DEG. ELBOW, 1 1/4" MNPT X 3/4" MJIC	86	8	1151	LOCKWASHER, 5/8, STEEL, GR8
22	1	1610	FITTING, 3/4 MNPT, PLUG	87	4	194	NUT, HEX, 5/8-11, STEEL, GR8
23	1	1626	FITTING, 1/2 MNPT, 1/2 MJIC, ELBOW	88	8	195-A	FLATWASHER, 5/8
24	1	1609-A	PLUG, FLUSH, 1/2	89	4	202	SCREW, HEX, 5/8-11, 2 1/2, STEEL, GR8
25	2	1562	FITTING, 1/4 MNPT, 1/4 MJIC, STRAIGHT	90	1	W43-32-32U	FLANGE KIT 2" FNPT
26	4	4R6X-S	FITTING, 1/4 FJIC SWIVEL, 1/4 MJIC, RUN TEE	91	1	W43-16-16U	FLANGE KIT, 1 FNPT, CODE 61
27	1	D2375	ROD WIPER, 2 3/8 ID X 2 7/8 OD X 3/8 HGT X 1/4 BASE THK.	92	1	8-10C5OX-S	FITTING, 5/8 MORB, 3/8 MJIC, 90 DEG
28	20	SST-08	SCREW, BUTTON HEAD, 1/4-20/ 3/4	93	1	1486-A	FITTING, O-RING, 1/4 x 1/4 MJIC, 90
29	2	126	SCREW, HEX HEAD, 5/16-18 X 2, GR8	94	1	CB11099	BUSHING, REDUCER, 2 X 1
30	2	1023-A	NUT, HEX 5/16 - 18 GR8	95	1	CB11099-01	FITTING, 1 CARLEX
31	2	1023-B	WASHER, LOCK, 5/16, GR8	96	6	4-4GTX	1/4" MJIC X 1/4" FNPT
32	2	SEC-12	COVER, CLEANOUT	97	1	12CTX	FITTING, 3/4 MNPT, 3/4 MJIC
33	1	RPTAG1	CLOCKWISE ROTATIONAL STICKER	98	1	1679	HEX NIPPLE, REDUCING, 1 MNPT X 3/4 MNPT
34	1	1467	ADAPTER, 3/4MNPT X 3/4MJIC, STRAIGHT	99	1	CVH05-0750N	3/4 CHECK VALVE
35	1	12G6X	FITTING, SWIVEL, 3/4 FNPT X 3/4 FJIC, STRAIGHT				
36	2	1404	FITTING, 3/4 MNPT, 3/4 MNPT, 8, STRAIGHT, SCH80				
37	1	1588	FITTING, 3/4 FNPT, 3/4 FNPT, ELBOW				
38	1	2STRAINER	STRAINER, SUCTION, 2 FNPT				
39	1	CLEBU1210-03	WELDMENT, TRAY, COMPUTER				
40	1	RP480-A202010LP	BOX, ELECTRICAL, 380V TO 480V				
41	1	CB11080	BUTTON, STOP				
42	1	CB11081	BUTTON, START				
43	1	P165875	FILTER ELEMENT				
44	1	PU4060-S30	FILLER CAP				
45	2	12002000	BAR, MOUNTING, HATCH COVER				
46	1	PU4060-S31	GUAGE, LEVEL / TEMPERATURE				
47	1	CB11099-03	FITTING, CARFLEX, 1, ELBOW				
48	1	CBCS500	CONSOLE SHIELD ASSEMBLY				
49	1	CB11085	CONTACT, BLOCK, NC				
50	1	CB11085-01	CONTACT, BLOCK, NC				
51	2	220816	BODY, RELIEF VALVE				
52	2	810209319	VALVE, CARTRIDGE, RELIEF				
53	4	4 C5OX-S	FITTING, 1/4 MORB, 1/4 MJIC, ELBOW				
54	2	RPVBCL	ASSEMBLY, VALVE, CYLINDER				
55	1	PN20-7500	FITTING, 1 1/4 MNPT X 1 1/4 MNPT, 7.5 IN, STRAIGHT, SCH 80 (PIPE NIPPLE)				
56	1	LFT-134-2	GAUGE FILTER 2 IN FACE 60 PSI .125 NPT				
57	1	PN20-C	NIPPLE, CLOSE, 1 1/4, SCH 80				
58	1	PN2-0300	PIPE NIPPLE, .125 X 3 MNPT, SCH 80				
59	1	1652-A	90 1/8" FNPT X 1/8" FNPT				
60	1	1382	NIPPLE, PIPE, 1/2				
61	1	1877	PIPE NIPPLE, 1/4 X8 MNPT				
62	1	1398	COLLAR, 1/4				
63	1	PU4060-S33	SWITCH, FLOAT, 1/4 MNPT				
64	1	RP04-200	2" SWING CHECK VALVE (FLAPPER VALVE)				
65	1	1871	BELL RED GV, 1 1/4 X 1/2				



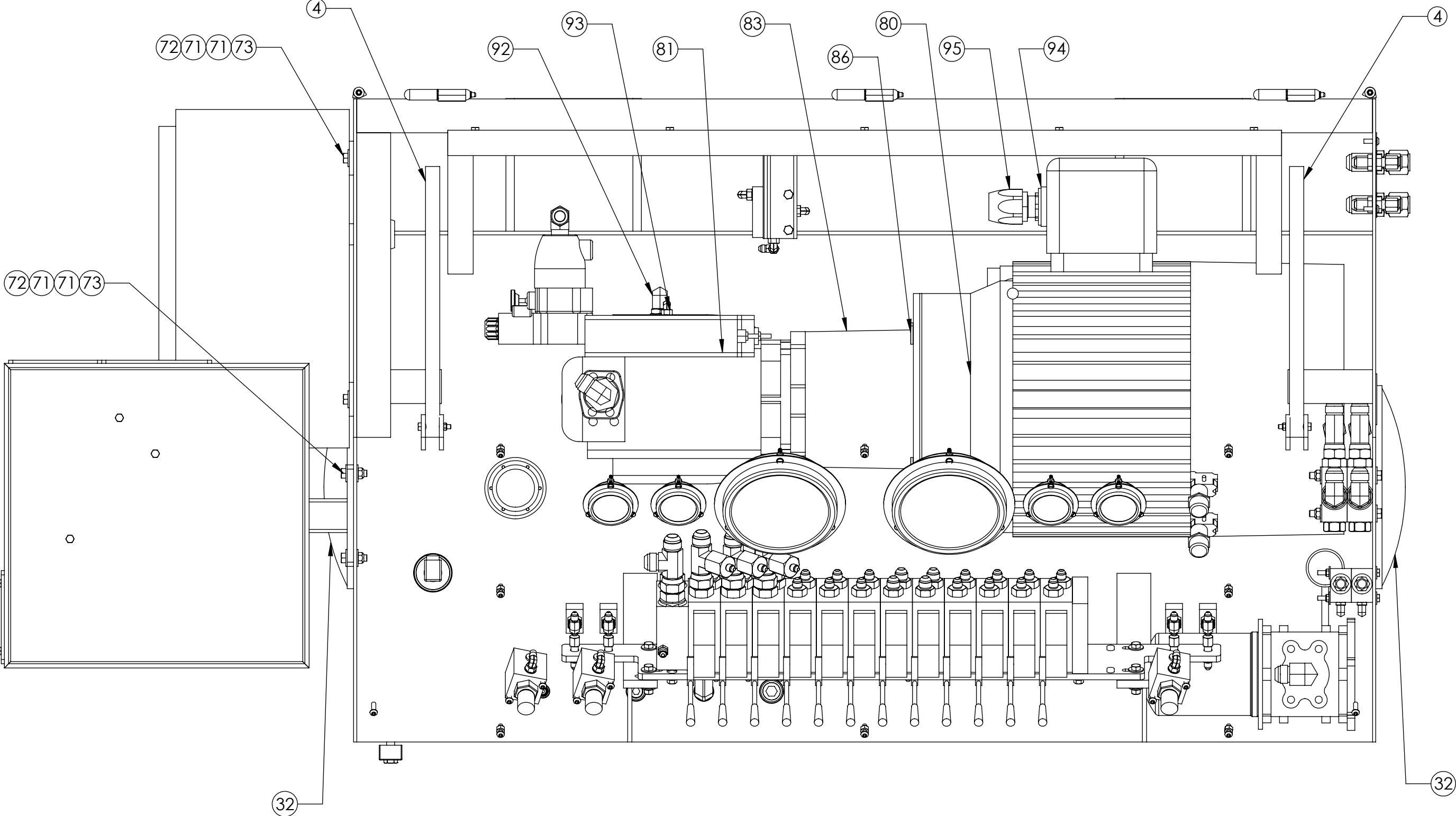
DESCRIPTION			
ASSEMBLY, POWER UNIT/ CONSOLE, 12 BANK			
SIZE	PART NO.	REV	
B	RP5047-3501	A	
MATERIAL		SHEET 2 OF 7	
N/A			

SHOWN WITHOUT FRONT, BOTTOM, TOP COVERS AND REDUCER BUSHING



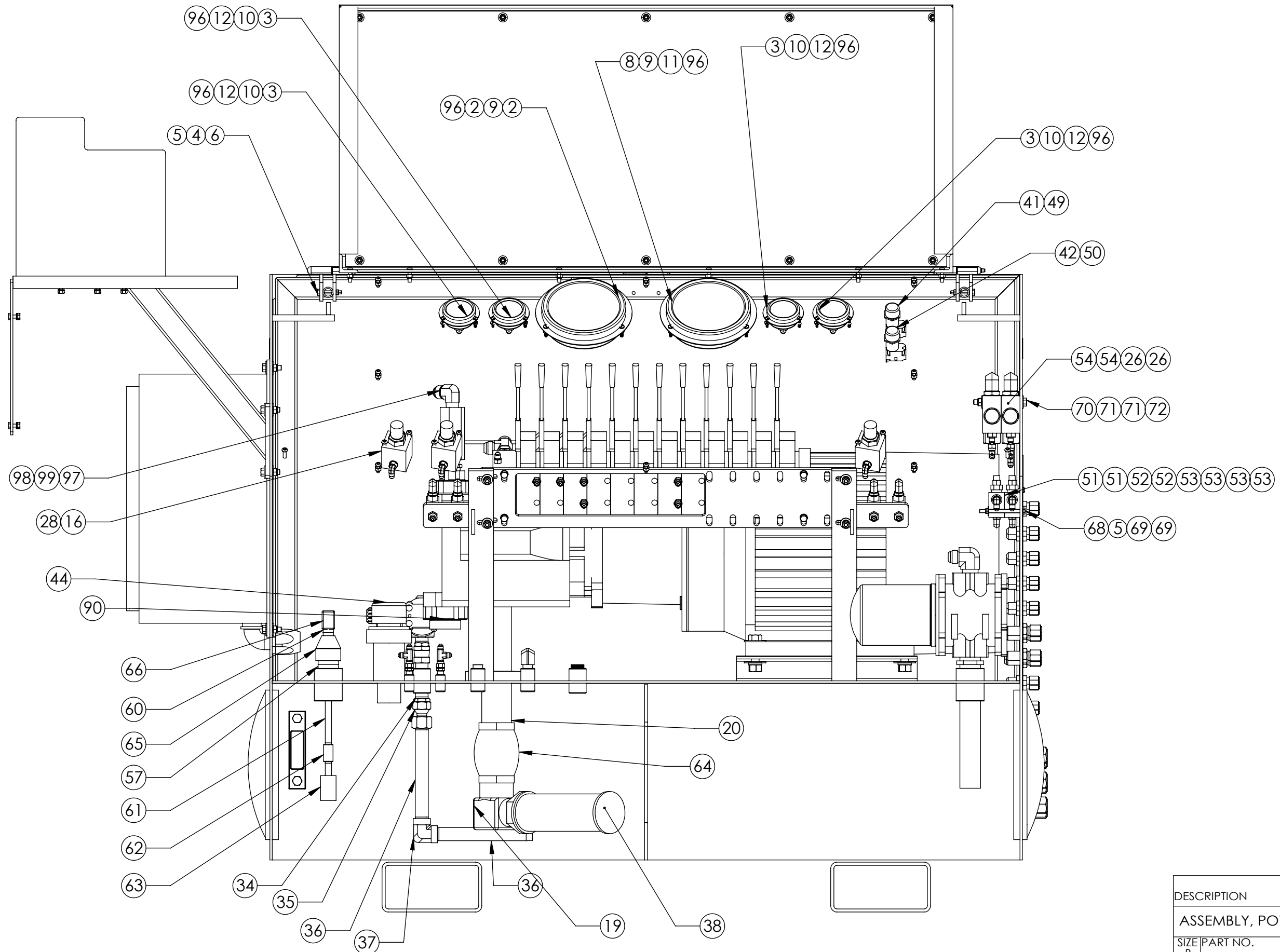
DESCRIPTION		
ASSEMBLY, POWER UNIT/ CONSOLE, 12 BANK		
SIZE	PART NO.	REV
B	RP5047-3501	A
MATERIAL	N/A	SHEET 3 OF 7


SHOWN WITHOUT FRONT, BOTTOM, AND TOP COVERS



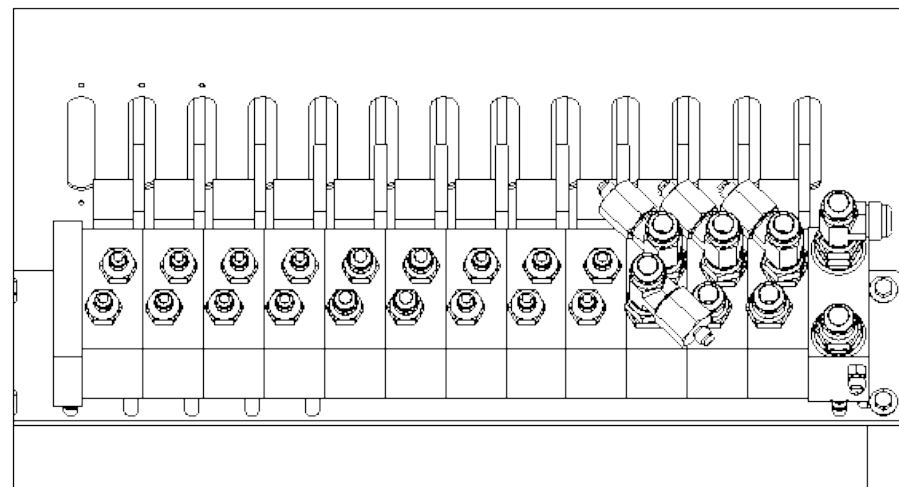
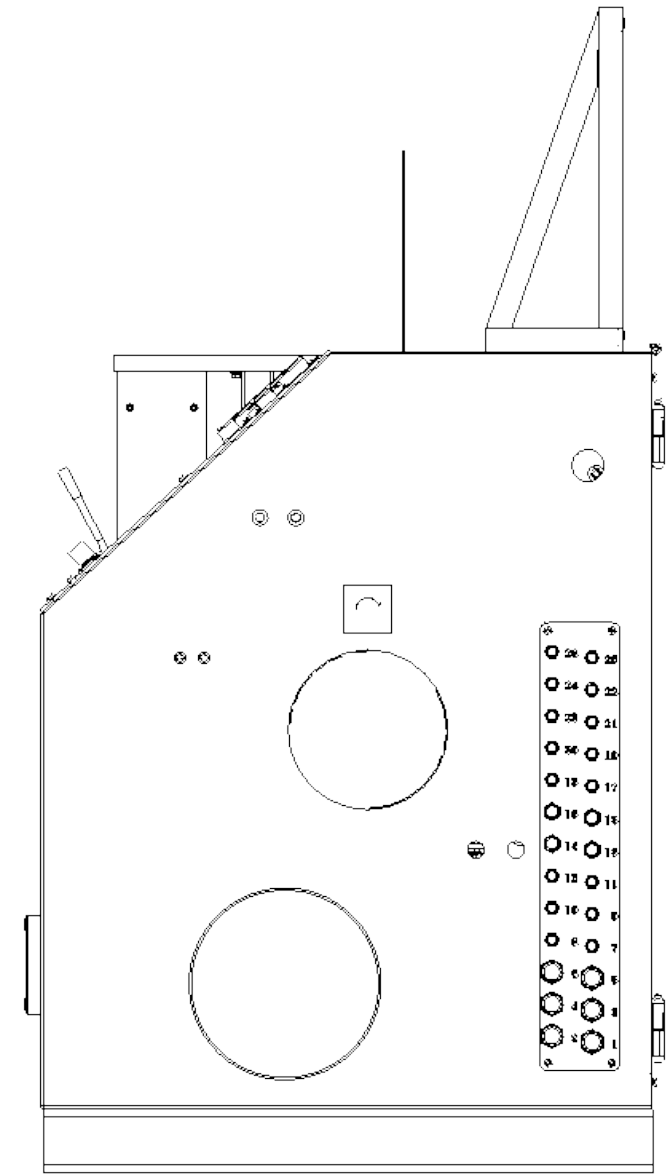
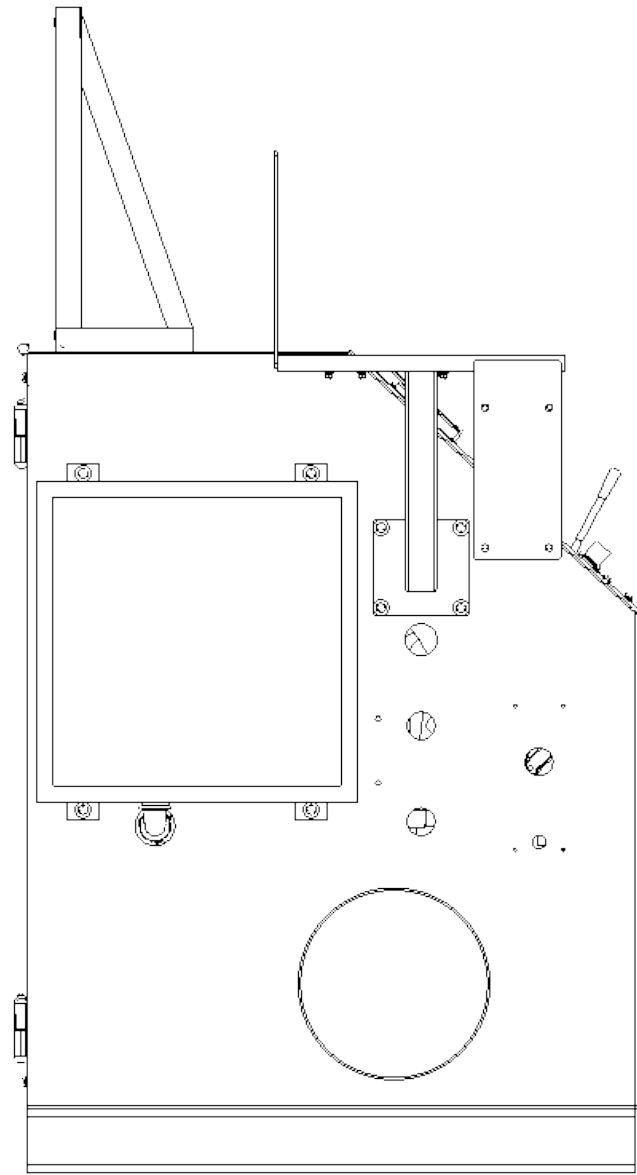
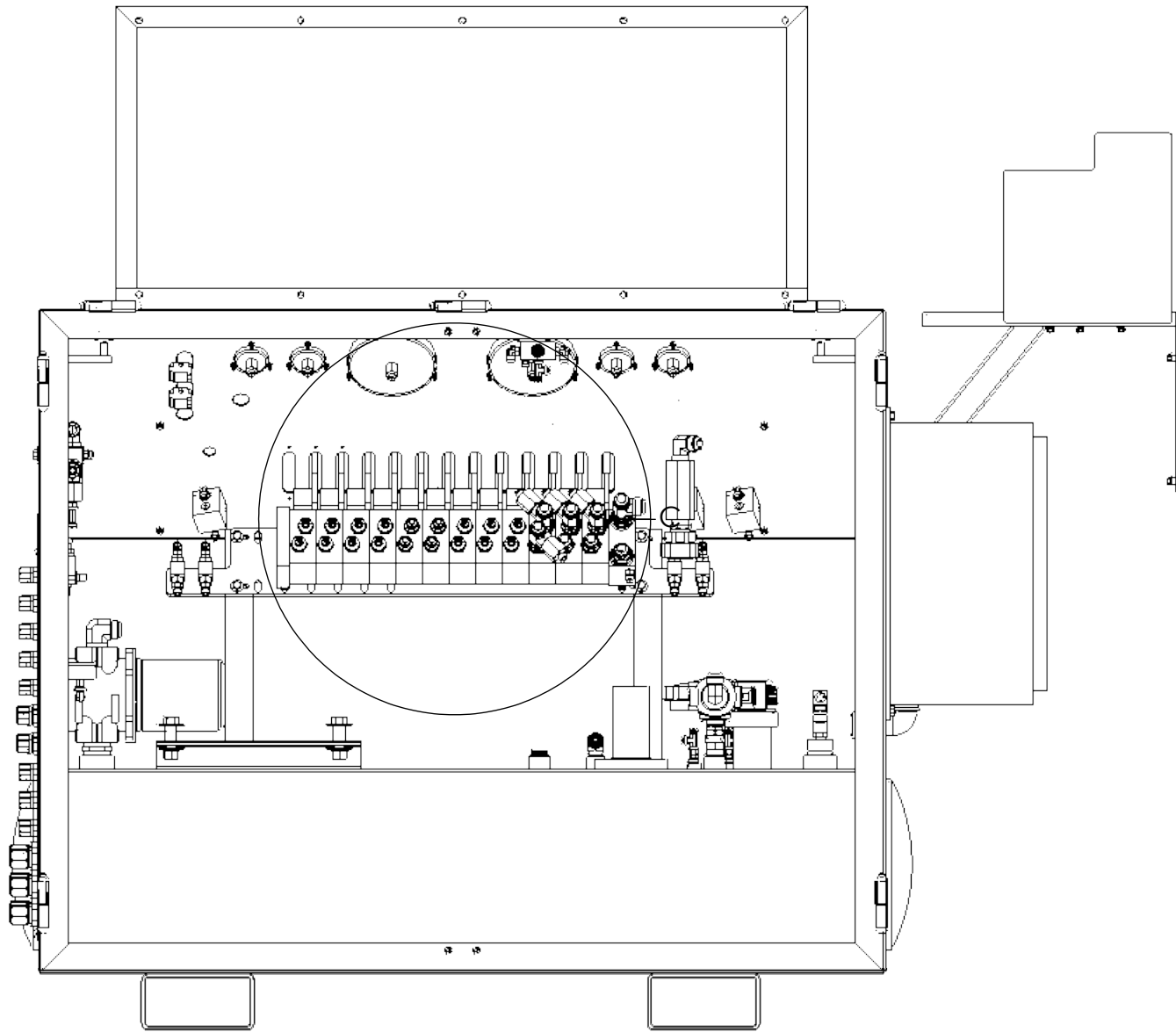
DESCRIPTION			
ASSEMBLY, POWER UNIT/ CONSOLE, 12 BANK			
SIZE	PART NO.	REV	
B	RP5047-3501	A	
MATERIAL		SHEET 4 OF 7	
N/A			

SHOWN WITHOUT FRONT, BOTTOM, AND TOP COVERS



DESCRIPTION		
ASSEMBLY, POWER UNIT/ CONSOLE, 12 BANK		
SIZE	PART NO.	REV
B	RP5047-3501	A
MATERIAL	N/A	SHEET 5 OF 7

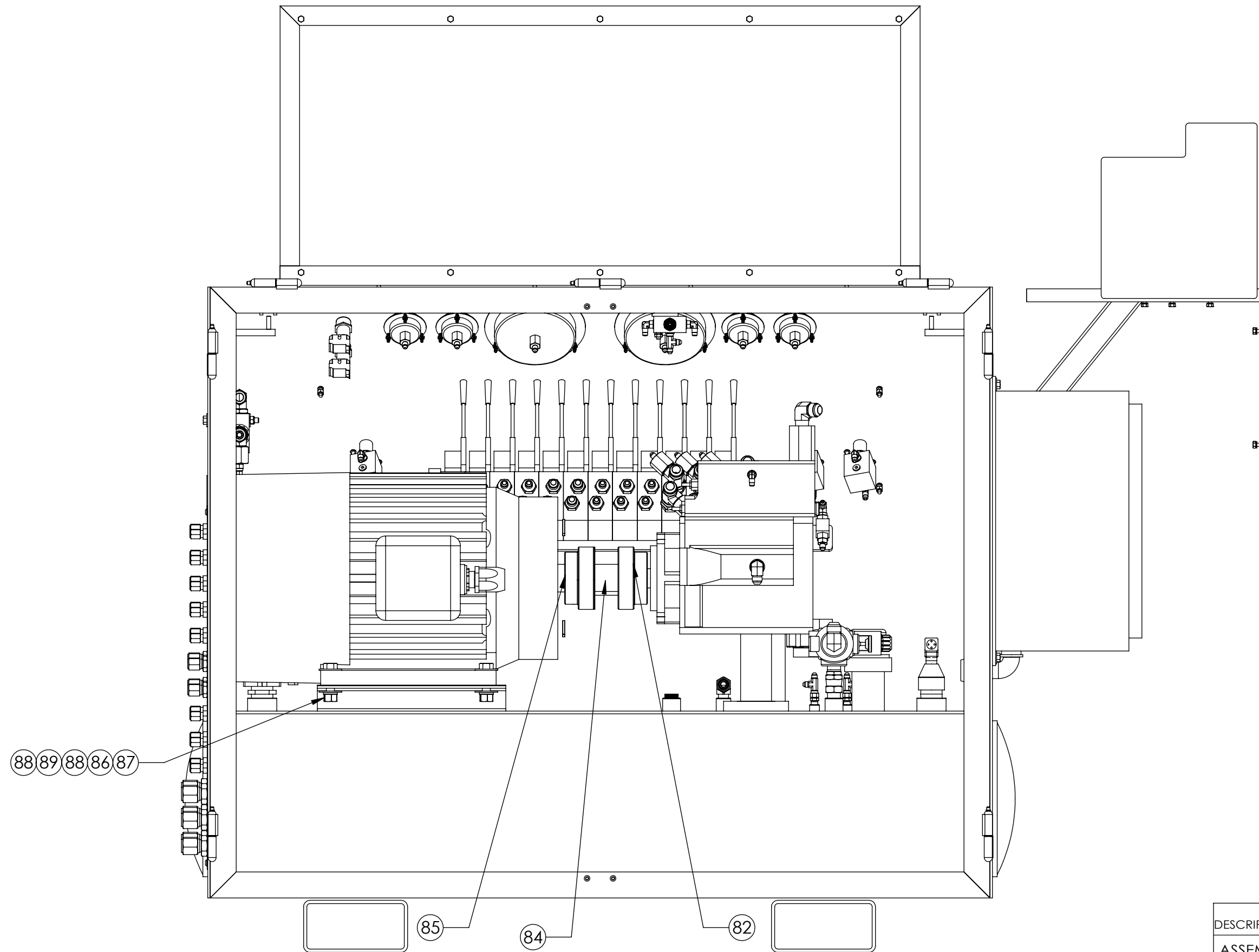
SHOWN WITHOUT REAR DOORS, MOTOR/PUMP ASSEMBLY



DETAIL C
SCALE 1 : 6

DESCRIPTION			
ASSEMBLY, POWER UNIT/ CONSOLE, 12 BANK			
SIZE	PART NO.	REV	
B	RP5047-3501	A	
MATERIAL		N/A	SHEET 6 OF 7

SHOWN WITHOUT MOTOR/PUMP MOUNTING ADAPTER, BACK DOORS



DESCRIPTION		
ASSEMBLY, POWER UNIT/ CONSOLE, 12 BANK		
SIZE	PART NO.	REV
B	RP5047-3501	A
MATERIAL	N/A	SHEET 7 OF 7