

RP5047-6002 SPECIFICATIONS

POWER REQUIREMENT	3 PHASE 480 V, 60 Hz	3 PHASE, 380 V 50 Hz	3 PHASE, 240V, 50 Hz
FULL LOAD / INRUSH CURRENT	59.2 A / 213 A	74.8 A / 269 A	118 A / 426 A
MAXIMUM OPERATING PRESSURE	3000 PSI / 207 BAR		
MAXIMUM MOTOR OUTPUT	50 HP		
MAXIMUM HYDRAULIC FLOW	47 GPM / 178 LPM		
HYDRALUIC RESERVOIR CAPACITY	90 GALLON / 341 L		
OIL REQUIREMENT	AW-68		
SPECIAL FEATURES	11 BANK VALVE		
	COOLER		
	AIR SHIFTER		

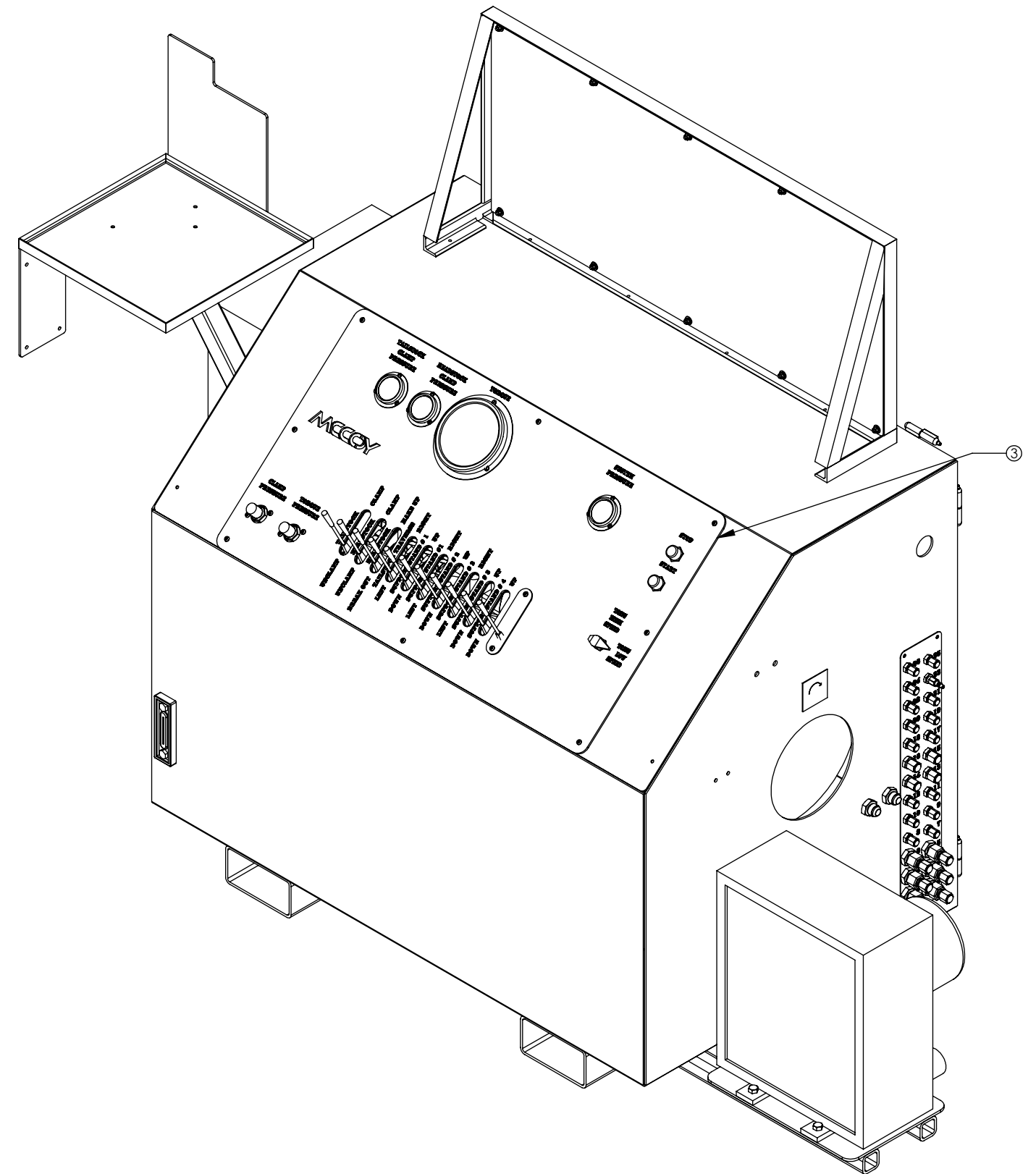
REVISIONS

REVISION	ECN NUMBER	ECN DESCRIPTION	ECN COMPLETED BY	ECO COMPLETED DATE
A	15-036	UNIT OVERHAUL	R.CENAC	2/20/2015
B	17-0101	ADDED GA SPECIFICATION SHEET; REPLACE (1) CRSS2009-01, (2) 4HP50N-S, (4) 1486-A W/ (1) RPVBADPM	M.BUDDEN	5/11/2017

UNLESS OTHERWISE SPECIFIED:		PROPRIETARY STATEMENT		DESCRIPTION	
1. DIMENSIONS ARE IN INCHES		THIS DOCUMENT IS THE PROPERTY OF MCCOY CORPORATION AND IS CONSIDERED CONFIDENTIAL. THIS INFORMATION MAY NOT BE USED, DISCLOSED, COPIED, OR REPRODUCED IN ANY FORM, WITHOUT THE EXPRESS WRITTEN CONSENT OF MCCOY CORPORATION.		ASSEMBLY, POWER UNIT/ CONSOLE, 11 BANK W/ COOLER	
2. TOLERANCES:		DRAWN		M.BUDDEN	
ANGULAR ± 1°		CHECKED		JB	
FRACTIONAL ± 1/16		APPROVED		JB	
TWO PLACE DECIMAL ± 0.02		THIRD ANGLE PROJECTION		WEIGHT	
THREE PLACE DECIMAL ± 0.005		1/4 ETCHED LETTERS, DENOTED BY "X"		4274.367 LBS.	
4. REMOVE BURRS & SHARP EDGES WITH 1/64" MAX		MATERIAL		N/A	
5. MACHINED FILET RADI SHALL BE 1/32"		REV		B	
6. FINAL SURFACE ROUGHNESS AVG. (Ra) SHALL BE ± 250 MICROINCHES		PART NO.		RP5047-6002	
7. DIMENSIONS IN TRIANGLE ARE CRITICAL DIMENSIONS		SHEET 1 OF 7			
8. 100% INSPECTION REQUIRED					
9. A TRIANGLE DENOTES A REVISION					
10. INTERPRET DRAWING PER ASME Y14.5-2009					

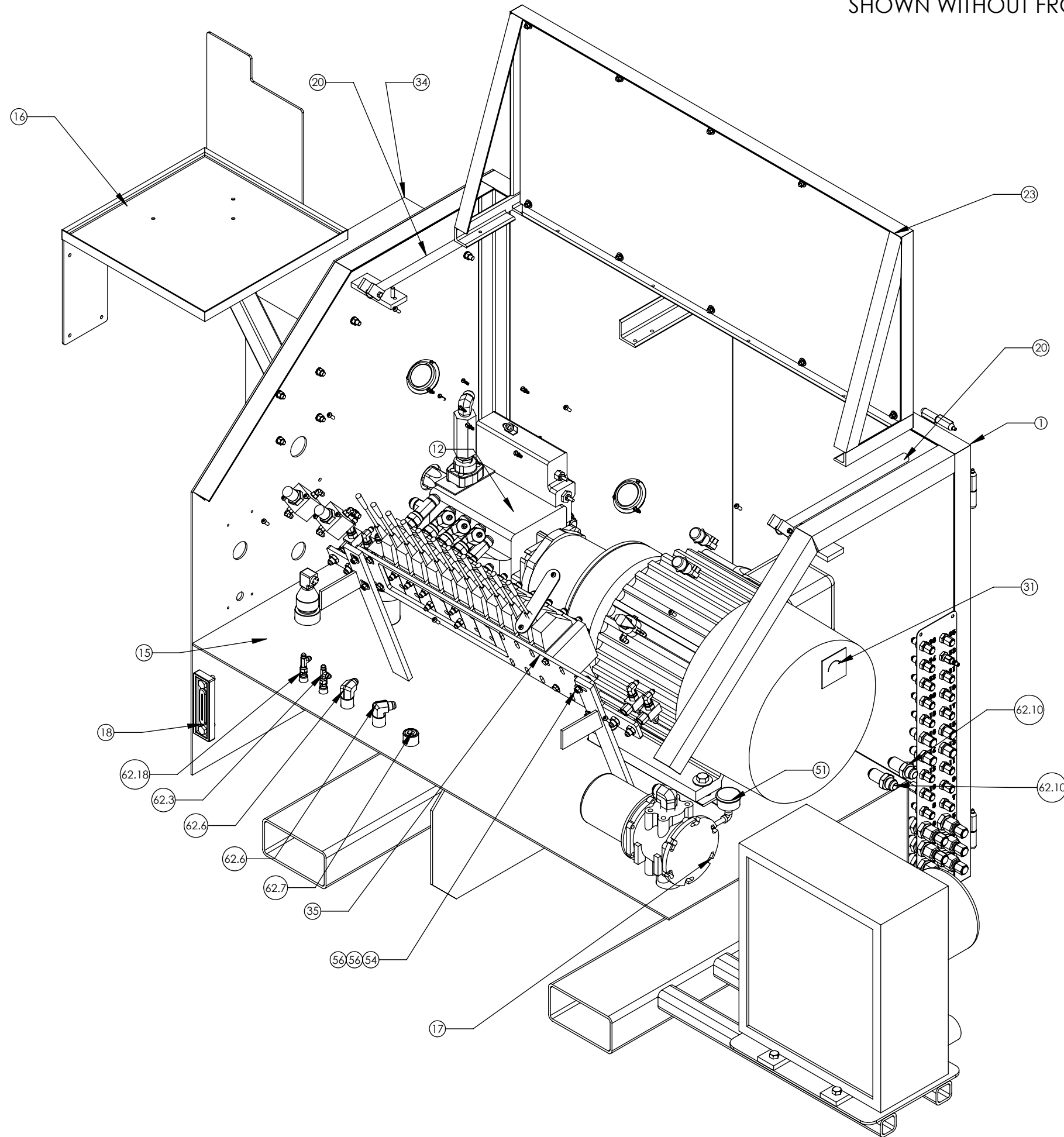
RELEASED FOR PRODUCTION

ITEM	QTY	P/N	DESCRIPTION	ITEM	QTY	P/N	DESCRIPTION
1	1	100-6500-13	CONSOLE, RP STYLE, W/ COOLER MOUNT	60	8	195-A	FLATWASHER, 5/8
2	1	PN32-15000	NIPPLE, PIPE, 1.5"	61	4	1156-A	NUT, NYLOCK, 5/8 - 11
3	1	3500-11	BANK, OVERLAY	62	1	KITFIT-RP5047-6002	KIT FITTING, POWER UNIT, CONSOLE, 11 BANK W/ COOLER
4	2	133-6500	2-1/2" 0-3000 PSI GAUGE	62.1	2	2501-12-20	FITTING, 90 DEG. ELBOW, 1 1/4" MNPT X 3/4" MJIC
5	9	CRSS20044	SCREW, MACHINE, 8-32, 1	62.2	1	1609-A	PLUG, FLUSH, 1/2
6	1	150C-6500	VALVE, COVER, SLOT	62.3	2	4R6X-S	FITTING, 1/4 FJIC SWIVEL, 1/4 MJIC, RUN TEE
7	1	134-6500	6" 0-5000 PSI GAUGE	62.4	1	1394-A	2" STREET EL. LOW PRESSURE
8	3	CRSS20033	SCREW, MACHINE, 10-32, 1, STAINLESS STEEL	62.5	1	1463	NIPPLE, HEX, 1 1/4"
9	1	135-6500	GAUGE, 2 - 1/2, 5000 PSI	62.6	2	1626	FITTING, 1/2 MNPT, 1/2 MJIC, ELBOW
10	1	1R3004A20A120	3P 10A FEM RCPT	62.7	1	1610	FITTING, 3/4 MNPT, PLUG
11	1	FCS-537W	FILLER BREATHER CAP ASSY	62.8	1	1467	ADAPTER, 3/4MNPT X 3/4MJIC, STRAIGHT
12	1	RPDV5047-3501	DUMP VALVE ASSEMBLY	62.9	1	1588	FITTING, 3/4 FNPT, 3/4 FNPT, ELBOW
13	1	PU2500-H21-01	HEAT EXCHANGER, ELECTRIC MOTOR, EXPLOSION PROOF	62.10	2	RP2700-12-12	FITTING, 3/4 MJIC, 3/4 MIC, STRAIGHT, BULKHEAD
14	9	1150-A01	NUT, 6-32, STAINLESS STEEL	62.11	1	1679	HEX NIPPLE, REDUCING, 1 MNPT X 3/4 MNPT
15	2	SEC-12	COVER, CLEANOUT	62.12	1	8-10C5OX-S	FITTING, 5/8 MORB, 3/8 MJIC, 90 DEG
16	1	CLEBU1210-03	WELDMENT, TRAY, COMPUTER FILTER HEAD W/ 1 1/4" FNPT PORTS	62.13	1	1486-A	FITTING, O-RING, 1/4 x 1/4 MJIC, 90
17	1	P563268	SCREW, HEX HEAD, 1/4-20, 1 3/4	62.14	1	12CTX	FITTING, 3/4 MNPT, 3/4 MJIC
18	1	T550-5	GAUGE, SIGHT, THERM	62.15	1	PN2-0300	PIPE NIPPLE, .125 X 3 MNPT, SCH 80
19	14	SST-08	SCREW, BUTON HEAD, 1/4-20/3/4	62.16	1	1652-A	90 1/8" FNPT X 1/8" FNPT
20	2	173-6500	TUBE, UPRIGHT	62.17	3	1588-L	FITTING, 1/8 MNPT, 1/4 MJIC, 90 DEGREE ELBOW
21	2	108	SCREW, HEX HEAD, 1/4-20, 1 3/4	62.18	2	1562	FITTING, 1/4 MNPT, 1/4 MJIC, STRAIGHT
22	2	212	NUT, NYLOCK, 1/4 - 20	62.19	5	12R6X-S	FITTING, RUN TEE, 3/4" FJIC X 3/4" MJIC
23	1	CBCS500	CONSOLE SHIELD ASSEMBLY	62.20	4	1725-A	FITTING, 3/8 MORB, 1/4 FNPT, STRAIGHT
24	1	P562207	FILTER, 150 PSI, 35-120 GPM, SE-100, HYDRAQUIP PN# P562207	62.21	8	6400-12-10-O	FITTING, 5/8 MORB, 3/4 MJIC
25	8	1048	SCREW, HEX, 3/8 - 16, 1 1/4, STEEL, GR8	62.22	14	6-10F5OX-S	FITTING, STRAIGHT, 3/8 MJIC, #10MSAE
26	8	1027	WASHER, LOCK, 3/8, STEEL	62.23	2	8-10F5OX-S	FITTING, 1/2 MJIC, 5/8 MSAE (#10), STRAIGHT
27	8	1024	NUT, HEX, 3/8 - 16, STEEL, GR08	62.24	4	2406-12-4	FITTING, REDUCER, 3/4" FJIC X 1/4" MJIC
28	4	1112	SCREW, HEX, 1/2-13, 1 1/2	62.25	8	4-5 f50x-s	FITTING, 1/2 MSAE x 1/4 MJIC STRAIGHT
29	4	1103	LOCKWASHER, 1/2	62.26	1	1579-B	VENT, 1/8 NPT
30	4	1101	NUT, HEX HEAD, 1/2-13	62.27	1	PN32-C	PIPE NIPPLE, 2 X CLOSE, SCH 40
31	1	RPTAG1	CLOCKWISE ROTATIONAL STICKER	62.28	4	8WTX-WLN-S	FITTING, 1/2 MJIC, 1/2 MJIC, STRAIGHT, BULKHEAD
32	1	73028	VALVE, 4 WAY BALL, 1/8 FNPT	62.29	6	12-WTX-WLN-S	FITTING, BULKHEAD, 3/4 INCH MJIC X MJIC
33	1	KITRPEM-01	KIT, MOTOR, ELECTRIC, 50 HP	62.30	15	6WTX-WLN-S	FITTING, 3/8 MJIC, 3/8 MJIC, STRAIGHT, BULKHEAD
34	1	RP480-A202010LP	BOX, ELECTRICAL, 380V TO 480V	62.31	1	A3C	FITTING, QUICK DISCONNECT, 1/4 MQD, 1/4 FNPT
35	1	108-6500-02	PVG 32 VALVE MOUNTING PLATE	62.32	5	6WFTX	FITTING, 3/8" MJIC X 3/8" MNPT
36	2	1725-A	FITTING, 3/8 MORB, 1/4 FNPT, STRAIGHT	62.33	2	1530	FITTING, REDUCER, 3/8 FJIC SWIVEL, 1/4 MJIC
37	1	152-6500	COVER, BULKHEAD	62.34	6	12-8TRTXN-S	FITTING, ADAPTER, 3/4 FJIC, 1/2 MJIC, 2-PC DESIGN
38	1	PU2500-H6	Pump/ Motor Mounting Adapter SAE C 4 bolt x 7.62" long	62.35	10	1637	CAP, JIC, 1/2
39	1	PU2500-H17	SPIDER, COUPLING, MOTOR SHAFT COUPLING, PUMP, 14T, 12/24 SPLINE, MfgNo : M500A1412C	62.36	15	1636	CAP, JIC, 3/8
40	1	PU2500-H18	MOTOR SHAFT COUPLING 2 3/8" B X 5/8" KEY	62.37	4	RP6801-NWO-4-6	FITTING, 90 DEG. ELBOW, 1/4" MJIC X 3/8" MORB
41	1	PU2500-H14	HYDRAULIC PUMP 75cc, LS JRRO75C-LS-21-20-NN-N-3-S1N2-A2N-NNN-NNN-NNN	62.38	1	4-4GTX	1/4" MJIC X 1/4" FNPT
42	1	7003638	ASSEMBLY, LEVEL SWITCH	62.39	1	12G6X	FITTING, SWIVEL, 3/4 FNPT X 3/4 FJIC, STRAIGHT
43	1	KITFIT-RPEPU	SWITCH, FLOAT, 1/4 MNPT	62.40	1	1653	FITTING, 1/4 FNPT, 1/4 MJIC, ELBOW
44	1	PU4060-S33	STRAINER, SUCTION, 2 FNPT	62.41	4	4-6F5OX-S	FITTING, 3/8 MORB, 1/4 MJIC, STRAIGHT
45	1	2STRAINER	BAR, MOUNTING, HATCH COVER	63	1	RPV5047-7000	11 BANK PVG 32 VALVE
46	2	12002000	ASSEMBLY, RELIEFE VALVE				
47	2	RPVBADPM	HOSE KIT, RP STYLE HPU/ CONTROL CONSOLE ASSY (CONTINUOUSLY ROTATING HEAD)				
48	1	KITHOSE-3502	VALVE, SHUTTLE, 1/4, NPT				
49	4	CRSS20021	FITTING, 3/4 MNPT, 3/4 MNPT, 7.5, STRAIGHT, SCH80				
50	2	1404-B	GAUGE FILTER 2 IN FACE 60 PSI .125 NPT				
51	1	LFT-134-2	FLANGE KIT, 1 FNPT, CODE 61				
52	1	W43-16-16U	3/4 CHECK VALVE				
53	1	CVH05-0750N	SCREW, HEX HEAD, 5/16-18 X 1 1/2				
54	8	124	WASHER, LOCK, 5/16, GR8				
55	4	1023-B	WASHER, FLAT, 5/16, GR8				
56	8	119	NUT, NYLOCK, 5/16-18, GRADE 8				
57	4	214A	FLANGE KIT 2" FNPT				
58	1	W43-32-32U	SCREW, HEX, 5/8-11, 2 1/2, STEEL, GR8				
59	4	202					

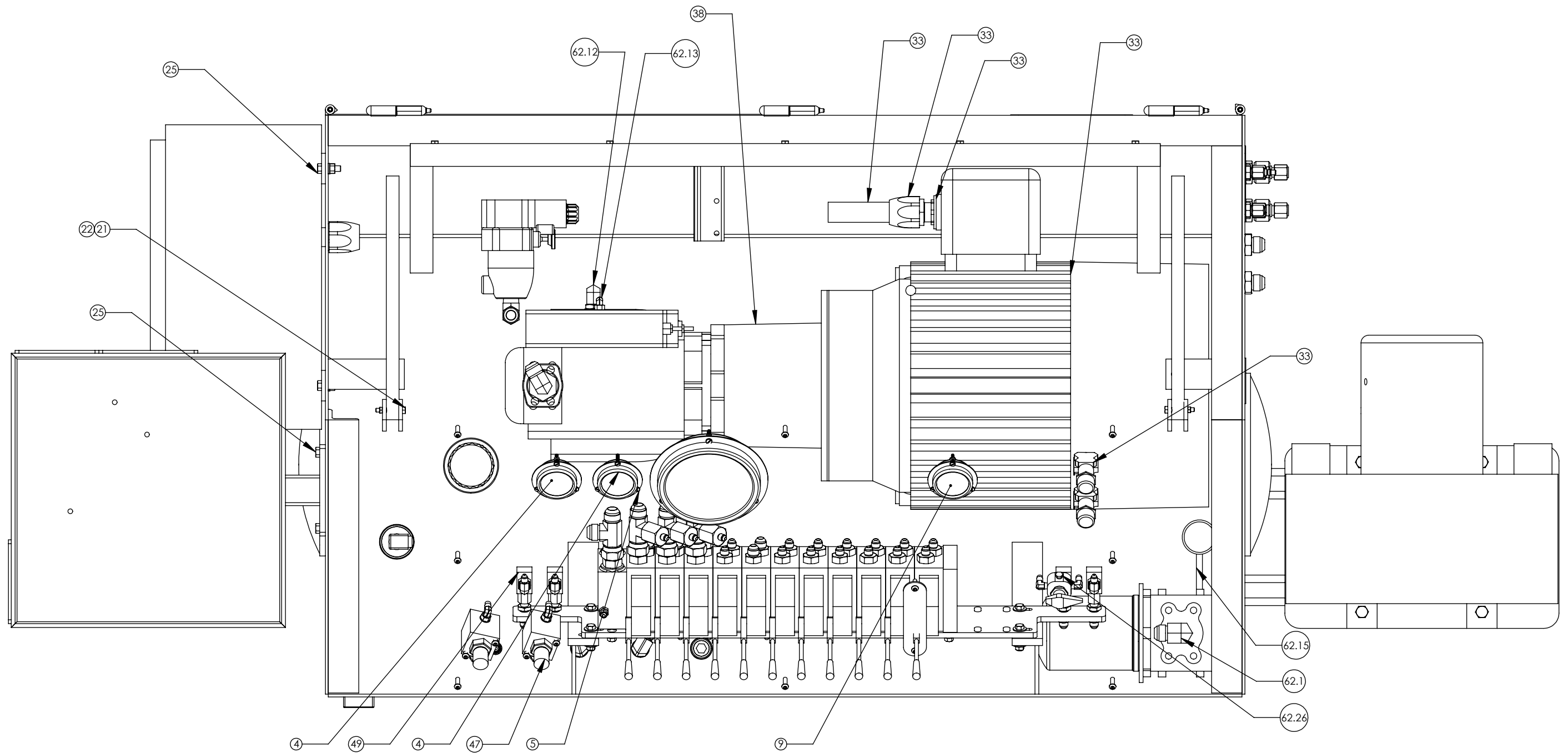


DESCRIPTION	ASSEMBLY, POWER UNIT/ CONSOLE, 11 BANK W/ COOLER	
SHEET PART NO.	RP5047-6002	REV B
MATERIAL	N/A	SHEET 2 OF 7

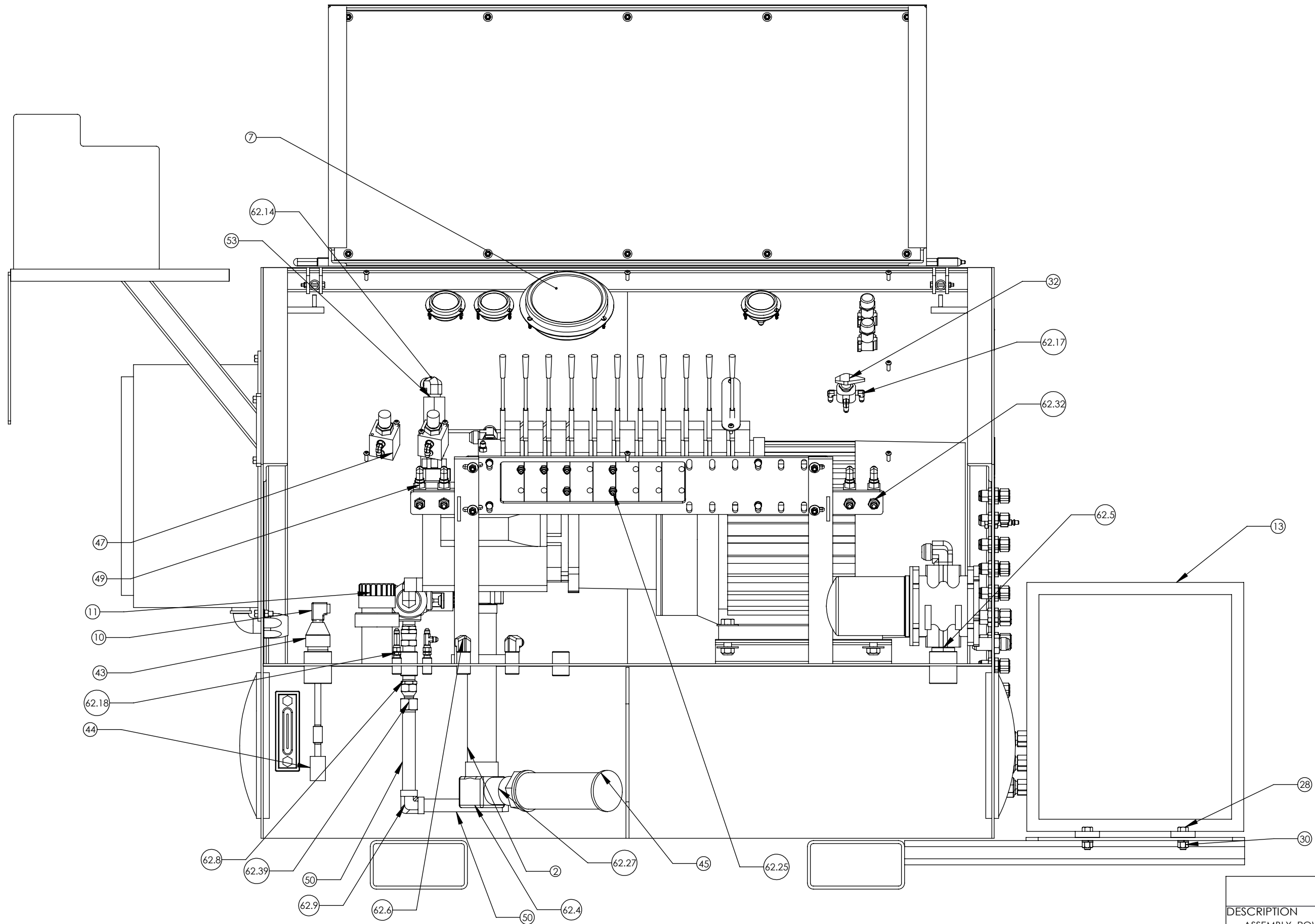
SHOWN WITHOUT FRONT, TOP, BOTTOM COVERS AND REDUCER BUSHING



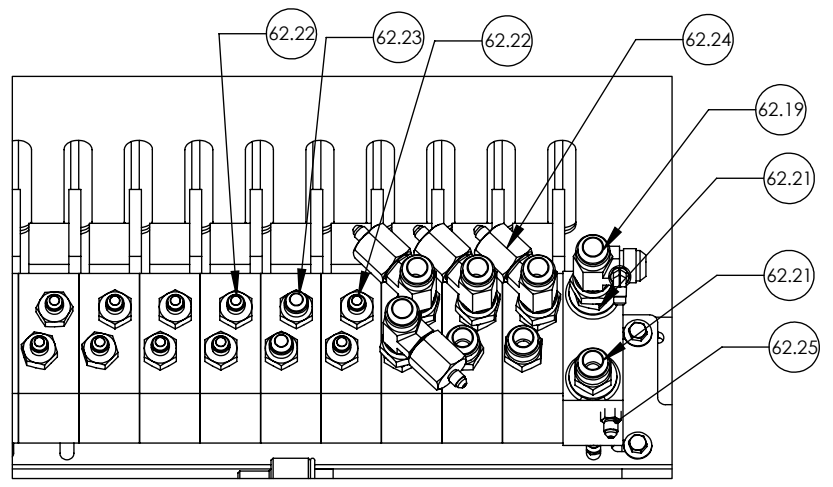
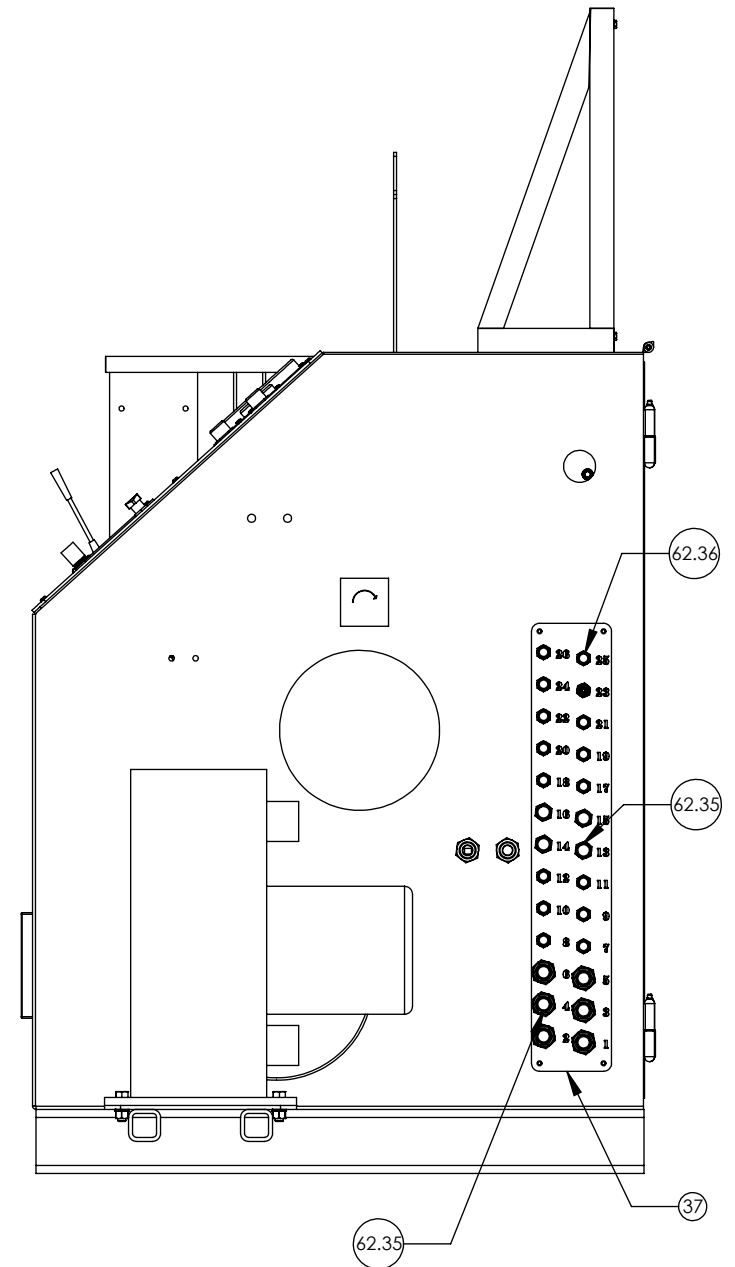
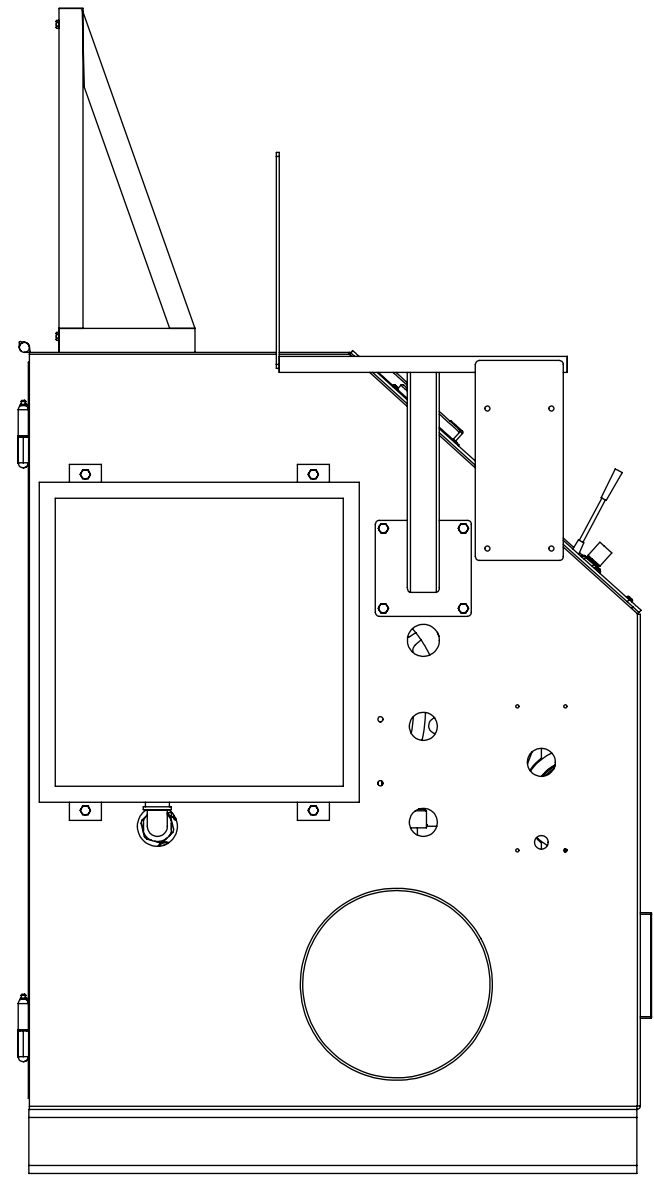
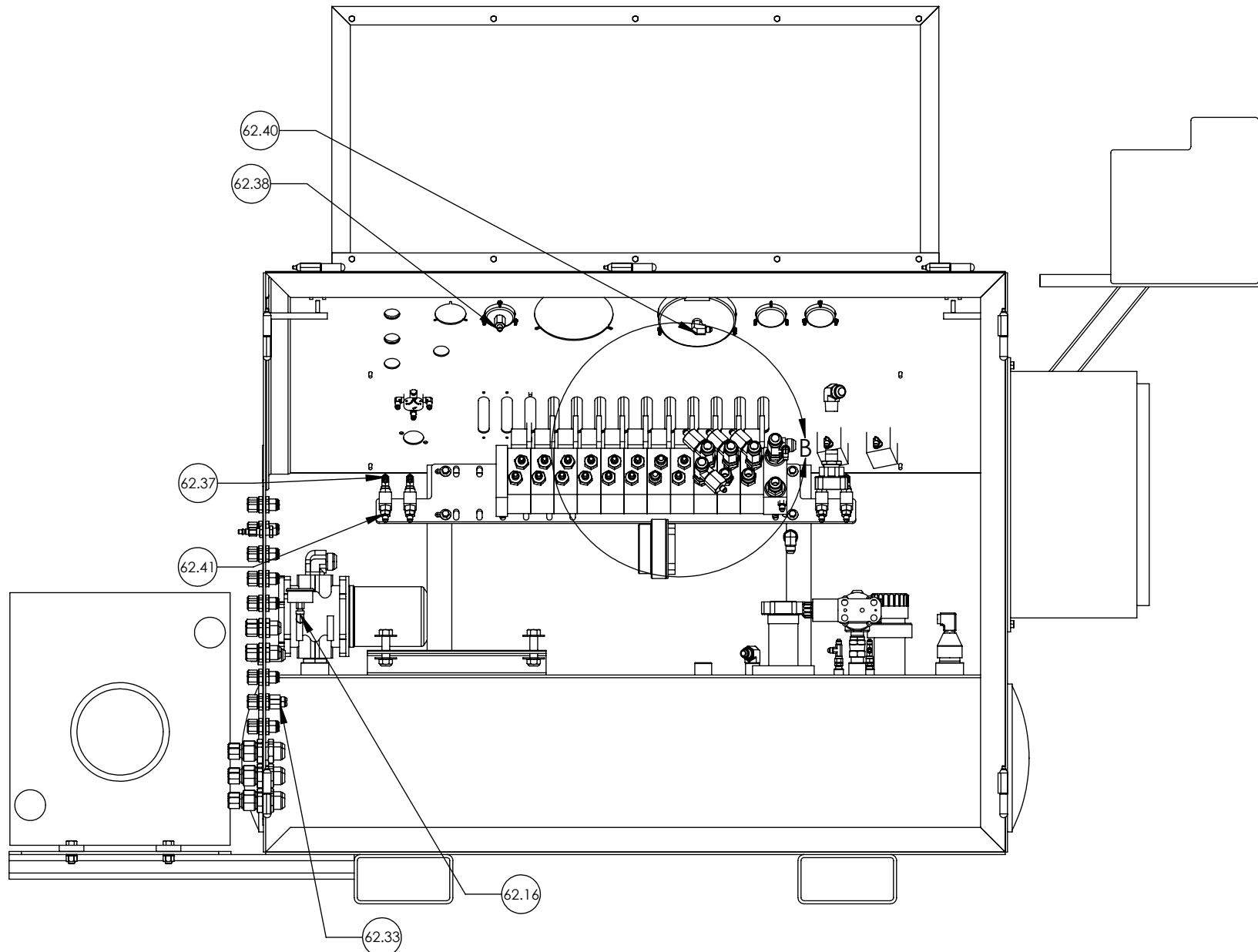
DESCRIPTION ASSEMBLY, POWER UNIT/ CONSOLE, 11 BANK W/ COOLER		
SIZE B	PART NO. RP5047-6002	REV B
MATERIAL N/A	SHEET 3 OF 7	



DESCRIPTION ASSEMBLY, POWER UNIT/ CONSOLE, 11 BANK W/ COOLER		
SIZE B	PART NO. RP5047-6002	REV B
MATERIAL N/A	SHEET 4 OF 7	



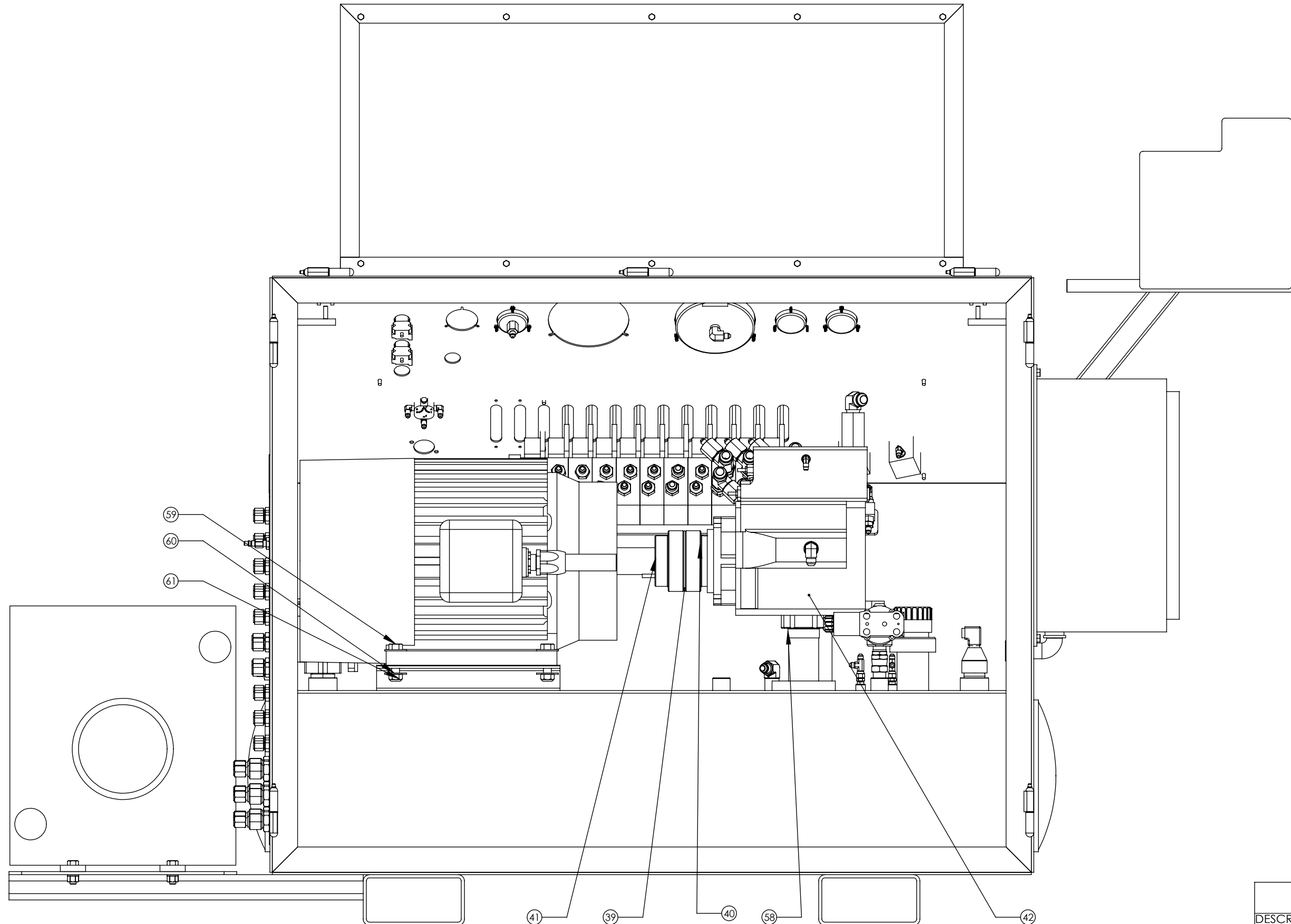
DESCRIPTION ASSEMBLY, POWER UNIT/ CONSOLE, 11 BANK W/ COOLER		
SIZE	PART NO.	REV
B	RP5047-6002	B
MATERIAL	N/A	SHEET 5 OF 7



DETAIL B
SCALE 1 : 6

DESCRIPTION ASSEMBLY, POWER UNIT/ CONSOLE, 11 BANK W/ COOLER		
SIZE B	PART NO. RP5047-6002	REV B
MATERIAL N/A	SHEET 6 OF 7	

SHOWN WITHOUT BACK DOORS, PUMP/MOTOR MOUNTING ADAPTER



DESCRIPTION ASSEMBLY, POWER UNIT/ CONSOLE, 11 BANK W/ COOLER		
SIZE B	PART NO. RP5047-6002	REV B
MATERIAL N/A	SHEET 7 OF 7	