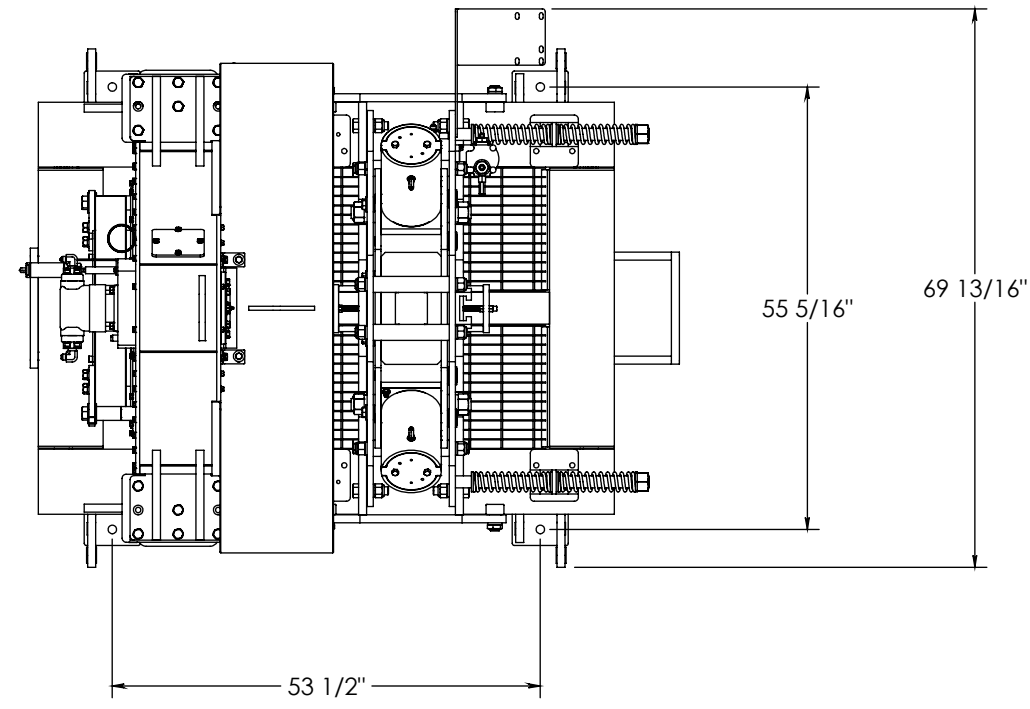
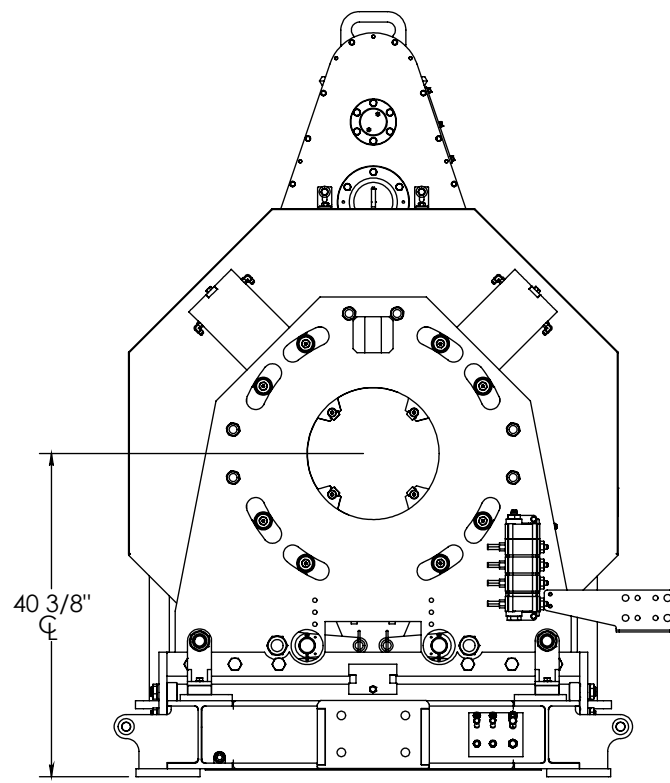
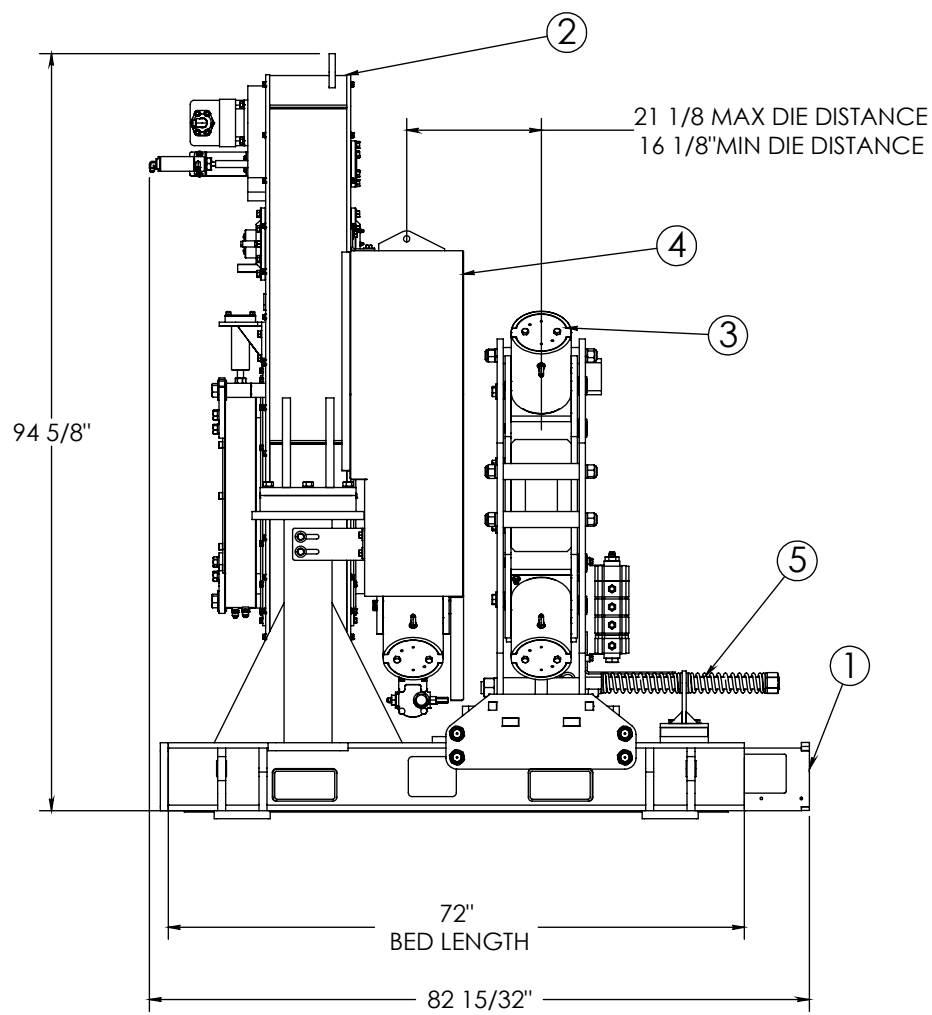


| ITEM | QTY | P/N          | DESCRIPTION                     |
|------|-----|--------------|---------------------------------|
| 1    | 1   | 1000590      | ASSEMBLY, SKID, 6 FOOT          |
| 2    | 1   | 200-6016-1   | ASSEMBLY, TONG                  |
| 3    | 1   | 300-6516     | ASSEMBLY, BACKUP, 16.5 INCH     |
| 4    | 1   | 3000-6500-03 | ASSEMBLY, HEAD GUARD, 16.5 INCH |
| 5    | 2   | 500-7000     | ASSEMBLY, SPRING RETRACT        |



| BUCKING UNIT SPECIFICATIONS |               |            |
|-----------------------------|---------------|------------|
| MAX TORQUE                  | 50,000 ft-lbs | 67,800 N-m |
| SYSTEM PRESSURE             | 3,000 PSI     | 207 Bar    |
| ARM LENGTH                  | 24 Inches     | 61cm       |
| MASS                        | 10,000 Lbs.   | 4,500 kg   |
| SPEED (RPM, ESTIMATED)      |               |            |
| AT FLOW RATE (GPM/LPM):     | 26.4 GPM      | 100 LPM    |
| LOW GEAR                    | 3.5 RPM       |            |
| HIGH GEAR                   | 17.1 RPM      |            |



| NUMBER OF JAWS | PIPE SIZE (IN) | MAX. TORQUE @ 2,000 PSI (ft-lb) | MAX. TORQUE @ 1,800 PSI (ft-lb) | MAX. TORQUE @ 1,500 PSI (ft-lb) | MAX. TORQUE @ 1,000 PSI (ft-lb) |
|----------------|----------------|---------------------------------|---------------------------------|---------------------------------|---------------------------------|
| 4 JAWS         | 7.625 - 16.000 | 50,000                          |                                 |                                 |                                 |
|                | 6.625          | 50,000                          | 50,000                          | 50,000                          | 49,500                          |
|                | 5.625          |                                 |                                 |                                 | 42,000                          |
|                | 5.500          |                                 |                                 |                                 | 41,100                          |
|                | 5.000          |                                 |                                 |                                 | 37,300                          |
|                | 4.500          |                                 |                                 |                                 | 33,600                          |
|                | 4.000          | 29,900                          |                                 |                                 |                                 |
|                | 3.500          | 26,100                          |                                 |                                 |                                 |
|                | 3.000          | 22,400                          |                                 |                                 |                                 |
|                | 2.875          | 21,500                          |                                 |                                 |                                 |
| 2.375          | 17,700         |                                 |                                 |                                 |                                 |

NOTES:  
 1) THIS TABLE REPRESENTS THE TORQUE AT WHICH DIES WILL SLIP ON THE TUBULAR  
 2) THIS UNIT REQUIRES AND RP5047-6XXX MODEL CONTROL CONSOLE TO OPERATE

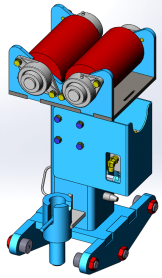
| REVISIONS |            |   |                  |                    |
|-----------|------------|---|------------------|--------------------|
| REVISION  | ECO NUMBER | ECO DESCRIPTION   | ECO COMPLETED BY | ECO COMPLETED DATE |
| A         | N/A        | INITIAL RELEASE   | N/A              | N/A                |
| B         | 15-0297    | ADDED (1) VISE-24, ADDED BALLOONS   | RCENAC           | 9/21/2015          |
| C         | 17-0111    | REPLACED (2) 2878-7000, (2) 1067, (4) 1103, (2) 256-7000, (2) 510-7000, (8) VISE-24, (4) VISE-15, AND (4) 1113 W/ (2) 500-7000. REVISED TO NEW GA FORMAT. | J. KELLY         | 2017               |

| UNLESS OTHERWISE SPECIFIED:  |  | PROPRIETARY STATEMENT  |             | DESCRIPTION |                                     |
|--|--|------------------------|-------------|-------------|-------------------------------------|
| 1. DIMENSIONS ARE IN INCHES  | THIS DOCUMENT IS THE PROPERTY OF MCCOY CORPORATION AND IS CONSIDERED CONFIDENTIAL. THIS INFORMATION MAY NOT BE USED, DISCLOSED, COPIED, OR REPRODUCED IN ANY FORM, WITHOUT THE EXPRESS WRITTEN CONSENT OF MCCOY CORPORATION. |                        |             |             |                                     |
| 2. TOLERANCES:<br>ANGULAR ± 1°<br>FRACTIONAL ± 1/16<br>TWO PLACE DECIMAL ± 0.02<br>THREE PLACE DECIMAL ± 0.005 |  |                        |             |             |                                     |
| 3. IDENTIFY P/N & MAIL P.O. USING 1/8 TO 1/4 ETCHED LETTERS; DENOTED BY "X"                                    |  | DRAWN                  | S.MCCROSKEY | 01/08/2014  | ASSEMBLY, BUCKING UNIT, 16-50K, 6FT |
| 4. REMOVE BURRS & SHARP EDGES WITH 1/64x45° MAX  |  | CHECKED                | B.PEARCE    |             | SIZE PART NO.                       |
| 5. MACHINED FILET RADII SHALL BE 1/32  |  | APPROVED               | B.PEARCE    |             | B RP6016-03                         |
| 6. FINAL SURFACE ROUGHNESS AVG. (Ra) SHALL BE ≤ 250 MICROINCHES  |  | THIRD ANGLE PROJECTION |             | WEIGHT      | MATERIAL                            |
| 7. DIMENSIONS IN PARENTHESES ARE CRITICAL DIMENSIONS; 100% INSPECTION REQUIRED                                 |  | 10067.8 LBS.           |             | N/A         | REV B                               |
| 8. A TRIANGLE DENOTES A REVISION   |  |                        |             |             | SHEET 1 OF 2                        |
| 9. INTERPRET DRAWING PER ASME Y14.5-2009   |  |                        |             |             |                                     |

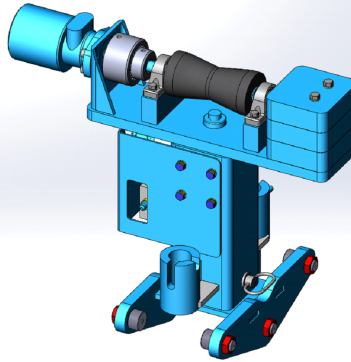
RELEASED FOR PRODUCTION

# STANDARD ACCESSORIES

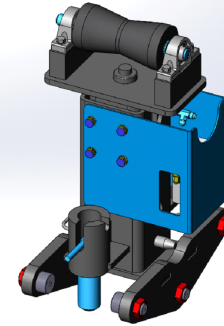
HYDRAULIC SUPPORT STAND



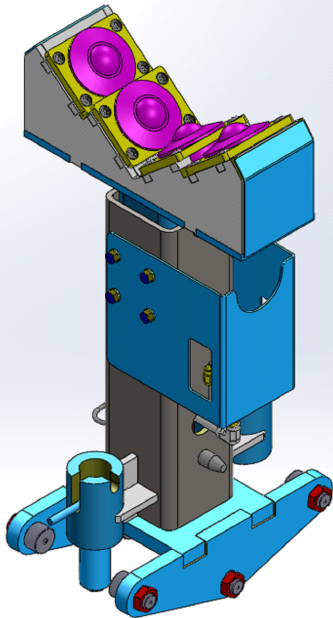
HYDRAULIC POWERED V-ROLLER SUPPORT STAND



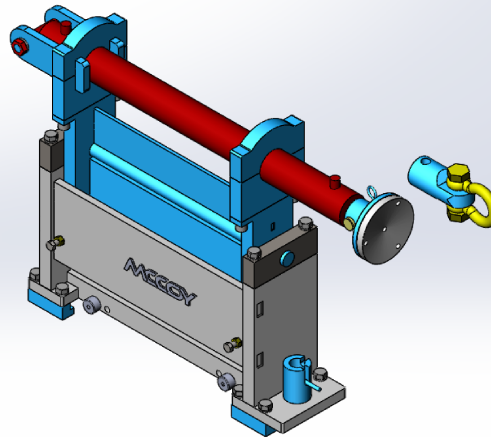
HYDRAULIC NON-POWERED V-ROLLER SUPPORT STAND



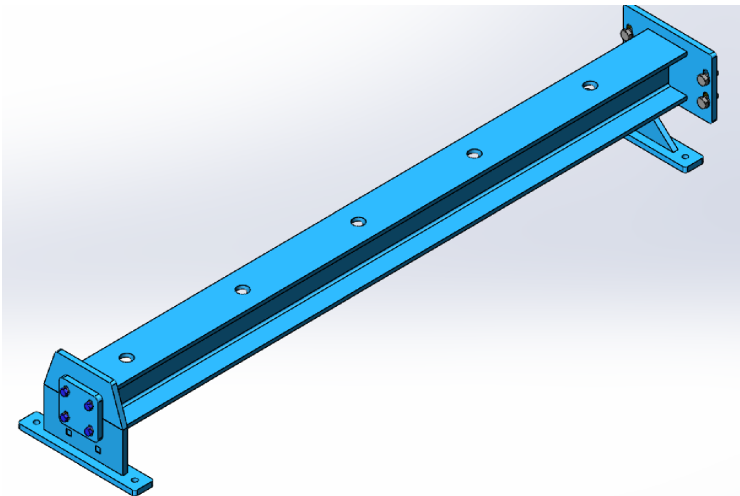
HYDRAULIC TRANSFER BALL ROLLER SUPPORT STAND



PUSH PULL



EXTENSION BEAM  
(AVAILABLE FROM 6' TO 20')



|                                     |           |              |
|-------------------------------------|-----------|--------------|
| DESCRIPTION                         |           |              |
| ASSEMBLY, BUCKING UNIT, 16-50K, 6FT |           |              |
| SIZE                                | PART NO.  | REV          |
| A                                   | RP6016-03 | B            |
| MATERIAL                            | N/A       | SHEET 2 OF 2 |