

ITEM	FULLY RETRACTED/QTY.	P/N	DESCRIPTION
1	1	1003952	ASSEMBLY, ELEVATION SKID
2	1	200-6512-1	ASSEMBLY, HEADSTOCK, 12 3/4
3	1	300-6500-12	ASSEMBLY, TAILSTOCK, 12 3/4
4	1	3000-6500-02	ASSEMBLY, HEAD GUARD

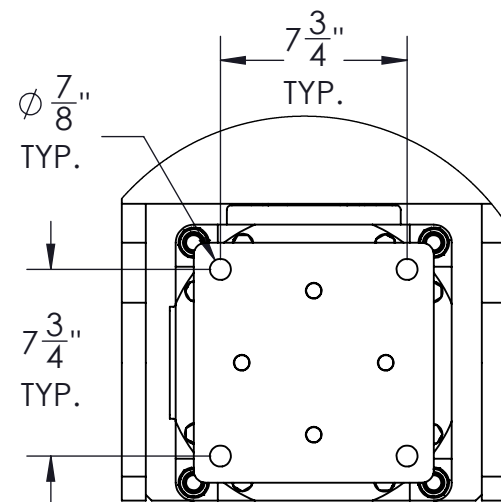
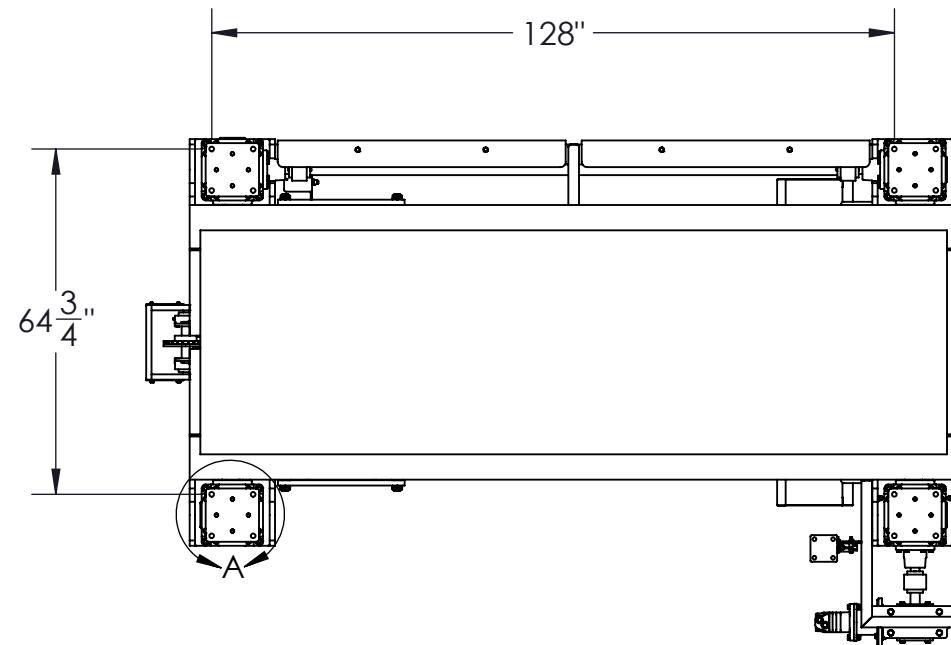
**BUCKING UNIT SPECIFICATIONS**

<b>MAX TORQUE</b>	35,000 ft-lbs	47,500 N-m
<b>SYSTEM PRESSURE</b>	3,000 PSI	207 Bar
<b>ARM LENGTH</b>	24 Inches	61cm
<b>MASS</b>	10,900 Lbs.	4,900 kg
<b>SPEED (RPM, ESTIMATED)</b>		
<b>AT FLOW RATE (GPM/LPM):</b>	26.4 GPM	100 LPM
<b>LOW GEAR</b>	3.5 RPM	
<b>HIGH GEAR</b>	17.1 RPM	

NUMBER OF JAWS	PIPE SIZE (IN)	MAX. TORQUE @ 2,000 PSI (ft-lb)	MAX. TORQUE @ 1,800 PSI (ft-lb)	MAX. TORQUE @ 1,500 PSI (ft-lb)	MAX. TORQUE @ 1,000 PSI (ft-lb)
<b>4 JAWS</b>	5.000 - 12.750	35,000			
	4.500	35,000	35,000	35,000	33,600
	4.000				29,900
	3.500				26,100
	3.000				22,400
	2.875				21,500
	2.375	31,900	26,600	17,700	

**NOTES:**

- THIS TABLE REPRESENTS THE THEORETICAL TORQUE AT WHICH THE DIES WILL SLIP ON THE TUBULAR
- THIS UNIT REQUIRES AND RP5047-6XXX MODEL CONTROL CONSOLE TO OPERATE



DETAIL A  
SCALE 1 : 8

RELEASED FOR PRODUCTION

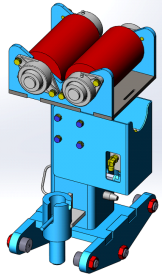
REVISIONS				
REVISION	ECO NUMBER	ECO DESCRIPTION	ECO COMPLETED BY	ECO COMPLETED DATE
A	N/A	INITIAL RELEASE	N.MALATHONG	10-21-2015
B	17-0111	UPDATED GA TO NEW FORMAT	J. KELLY	2017

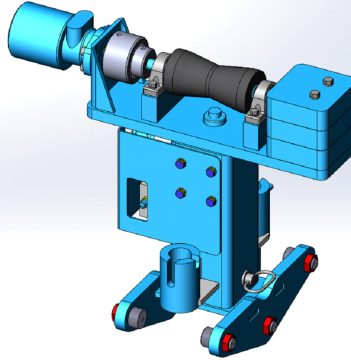
UNLESS OTHERWISE SPECIFIED:		PROPRIETARY STATEMENT	
1. DIMENSIONS ARE IN INCHES	THIS DOCUMENT IS THE PROPERTY OF MCCOY CORPORATION AND IS CONSIDERED CONFIDENTIAL. THIS INFORMATION MAY NOT BE USED, DISCLOSED, COPIED, OR REPRODUCED IN ANY FORM, WITHOUT THE EXPRESS WRITTEN CONSENT OF MCCOY CORPORATION.		
2. TOLERANCES: ANGULAR ± 1° FRACTIONAL ± 1/16 TWO PLACE DECIMAL ± 0.02 THREE PLACE DECIMAL ± 0.005			
3. IDENTIFY P/N & MAIL P.O. USING 1/8 TO 1/4 ETCHED LETTERS, DENOTED BY "X"		DRAWN	N.MALATHONG 10/23/2015
4. REMOVE BURRS & SHARP EDGES WITH 1/64x45° MAX		CHECKED	B.PEARCE 10/26/2015
5. MACHINED FILET RADI SHALL BE 1/32		APPROVED	B.PEARCE 10/26/2015
6. FINAL SURFACE ROUGHNESS AVG. (Ra) SHALL BE ≤ 250 MICROINCHES		THIRD ANGLE PROJECTION	
7. ○ DENOTES CRITICAL DIMENSION; 100% INSPECTION REQUIRED		WEIGHT	10913.754 LBS.
8. A TRIANGLE DENOTES A REVISION		DESCRIPTION ASSEMBLY, BUCKING UNIT W/ ELEVATION SYSTEM, 12-35K, 12 FT	
9. INTERPRET DRAWING PER ASME Y14.5-2009		SIZE PART NO. B RP6512-04	
		MATERIAL N/A	

# STANDARD ACCESSORIES

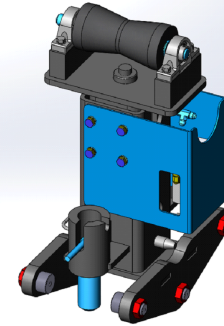
HYDRAULIC SUPPORT STAND



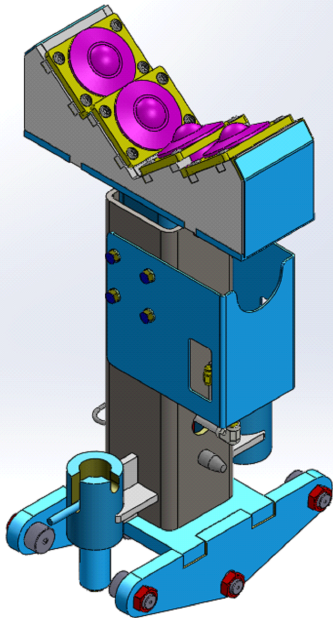
HYDRAULIC POWERED V-ROLLER SUPPORT STAND



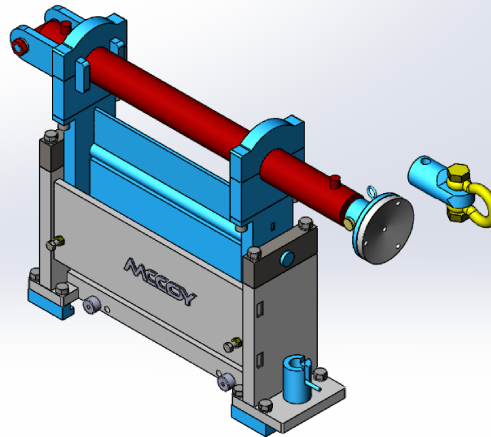
HYDRAULIC NON-POWERED V-ROLLER SUPPORT STAND



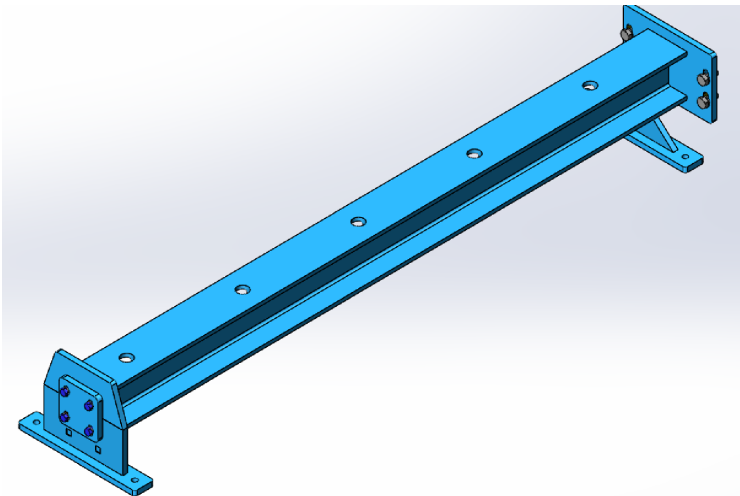
HYDRAULIC TRANSFER BALL ROLLER SUPPORT STAND



PUSH PULL



EXTENSION BEAM  
(AVAILABLE FROM 6' TO 20')



DESCRIPTION		
ASSEMBLY, BUCKING UNIT W/ ELEVATION SYSTEM, 12-35K, 12 FT		
SIZE	PART NO.	REV
A	RP6512-04	B
MATERIAL	N/A	SHEET 2 OF 2