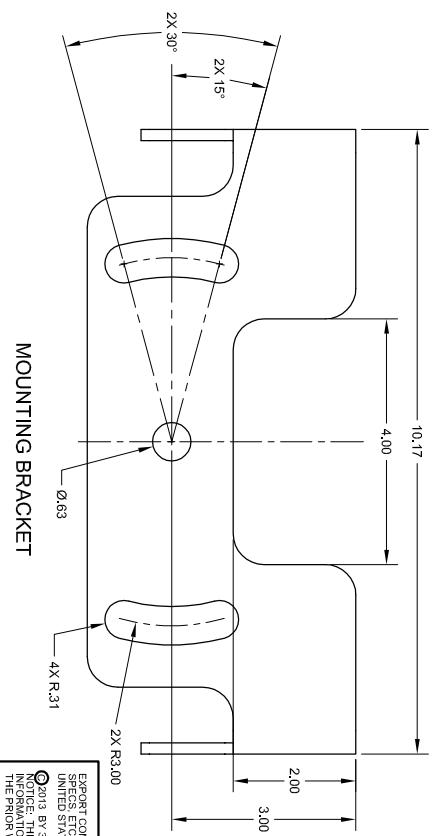
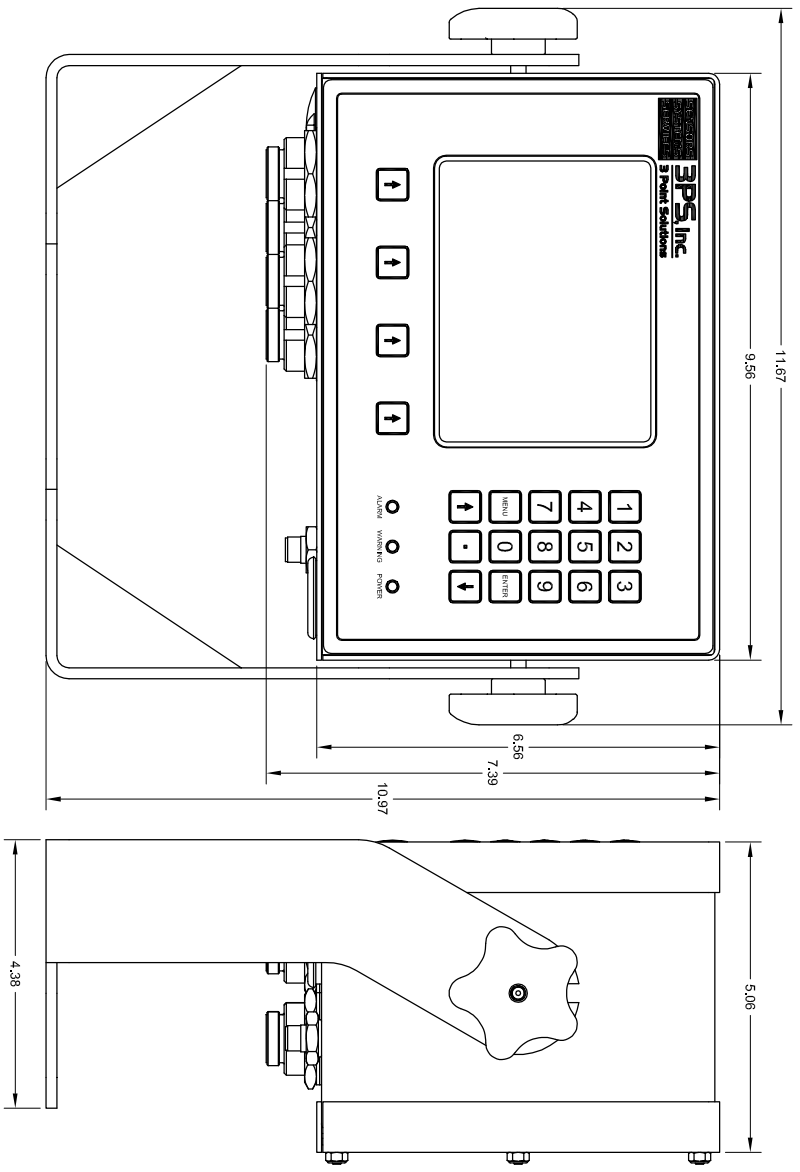


REV	DESCRIPTION	APPROVED	DATE
A	INITIAL RELEASE	K. CORPORATION	02/11/13
B	REV PER ECO 3044	R. CHISM	01/22/15

8 7 6 5 4 3 2 1

**SPECIFICATIONS:**

- GENERAL:
  - 1.1 LCD DISPLAY: 5" DIAGONAL
  - 1.2 15 BUTTON NUMERIC KEYPAD
  - 1.3 4 BUTTON HOT KEYS
  - 1.4 POWER, ALARM AND WARNING LED
- FEATURES:
  - 2.1 DESIGNED FOR GENERAL, CRANE AND WINCH LOAD MONITORING
  - 2.2 DATA AND ALARM LOGGING
  - 2.3 NO NEED FOR INTERNAL ACCESS
- CONNECTIONS:
  - 3.1 POWER: 7-30 VDC, 120 VAC OPTIONAL
  - 3.2 RS485 DATA, FAULT PROTECTED
  - 3.3 CANBUS DATA, FAULT PROTECTED
  - 3.4 ETHERNET TOPIIP PORT
  - 3.5 USB PORT
- CONSTRUCTION:
  - 4.1 HOUSING MATERIAL: STAINLESS STEEL
  - 4.2 HARDWARE: STAINLESS STEEL
  - 4.3 LENS: 1/4" THICK POLYCARBONATE (LEXAN)
- ENVIRONMENTAL:
  - 5.1 OPERATING TEMPERATURE: -40°C TO +85°C
  - 5.2 STORAGE TEMPERATURE: -40°C TO +85°C
  - 5.3 SEALING: NEMA 4X, IP67



EXPORT COMPLIANCE: TRANSFER OF SPS DATA, DOCUMENTS, SOFTWARE, DRAWINGS, SPECS ETC BY ANY MEANS TO A FOREIGN PERSON OR ENTITY, WHETHER IN THE UNITED STATES OR ABROAD, MAY REQUIRE U.S. GOVERNMENT AUTHORIZATION.  
 ©2013 BY SPS INC. ALL INFORMATION CONTAINED HEREIN IS CONFIDENTIAL AND PROPRIETARY INFORMATION, AND AS SUCH, CANNOT BE COPIED OR DISCLOSED TO OTHERS WITHOUT THE PRIOR WRITTEN CONSENT OF SPS, INC.

<p>TO: ESANGES (UNLESS OTHERWISE SPECIFIED)          HOLE: .408          DECIMAL: .xxx ±.005          ANGLES: .x ±.1          SURFACE: 125          REMOVE ALL BURRS, BREAK SHARP EDGES AND CHAMFER CORNERS R.015 MAX.</p>		<p>THIRD ANGLE PROJECTION</p>
<p>UNLESS OTHERWISE SPECIFIED ALL DIMENSIONS ARE IN INCHES. DIMENSIONAL LIMITS APPLY AFTER FINISHING.</p>	<p>DATE: 02/11/13          DESIGNED BY: J. PILLINGTON          K. CORPORATION</p>	<p>DATE: 02/11/13          APPROVED BY: K. CORPORATION          R. CHISM</p>
<p>UNLESS OTHERWISE SPECIFIED ALL DIMENSIONS ARE IN INCHES. DIMENSIONAL LIMITS APPLY AFTER FINISHING.</p>		<p>DATE: 02/11/13          APPROVED BY: K. CORPORATION          R. CHISM</p>
<p>UNLESS OTHERWISE SPECIFIED ALL DIMENSIONS ARE IN INCHES. DIMENSIONAL LIMITS APPLY AFTER FINISHING.</p>		<p>DATE: 02/11/13          APPROVED BY: K. CORPORATION          R. CHISM</p>

**SPECIFICATION DETAIL DRAWING**

**SPS Inc.**  
 1300 Arrow Point Dr.  
 Cedar Park, TX

DISPLAY, SD50

SCALE: NONE

DO NOT SCALE DRAWING

SHEET 1 OF 1

A B C D 8 7 6 5 4 3 2 1