



TOUGH. TESTED. RELIABLE.



McCoy Global products and services are subject to the Standard Terms and Conditions of Sale (or Rental) for McCoy Global Inc., both of which are available at mccoysglobal.com.
For more information contact an authorized McCoy Global representative.
Unless noted otherwise, trademarks and service marks herein are the property of McCoy Global, Inc. Specifications are subject to change without notice. McCoy Global, Inc. All rights reserved. v18

www.mccoysglobal.com | sales@mccoysglobal.com



TOUGH. TESTED. RELIABLE.



Running-Line Tensiometers

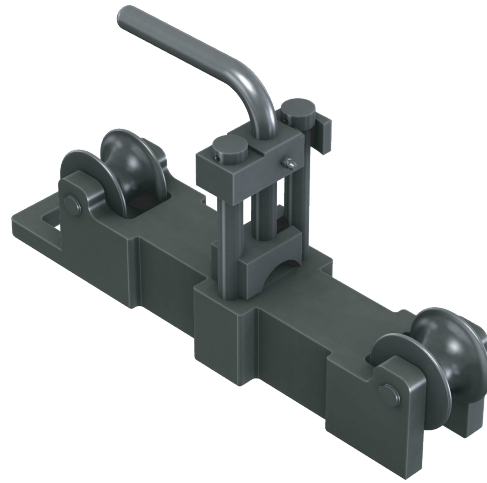
Our Running-Line Tensiometers accurately measure line speed, tension and payout to ensure safe and reliable operation of offshore mooring systems, anchor monitoring systems, cranes or oceanographic payloads.

Fixed or variable rope sizes up to 4 inches	
Measures speed, payout and tension	
Multiple mounting styles	
High duty cycles	
Hazardous Area Certification	
Output Signal:	4-20 mA
Excitation:	10 to 28 Volts DC
Static Error Band:	±2% of Full Scale
Temperature:	-20°C to 75°C
Thermal Sensitivity Shift:	<0.01% of Capacity per °C
Materials:	AL 7075-T651, 17/4 pH Stainless Steel and AISI 4140 Alloy Steel
Hazardous Area:	UL and CAN/CSA or ATEX
Load Simulation:	Available upon request.

* Other capacities available.

LINE TENSIO METERS

CLAMP-LINE & RUNNING-LINE



Clamp-Line Tensiometers

The Clamp Line Tensiometer measures tension on static lines. This device is easy to install and is available in standard sizes or can be custom-built to your specifications. This system installs in minutes at any convenient point on a fixed position line and can monitor overhead lifting or guy wire applications.

Standard Capacities*:	100,000 and 150,000 lbf
Wire Rope Diameters:	100K Capacity: 0.5 to 1.5 inches 150K Capacity: 1.5 to 2.25 inches
Output Signal:	4-20 mA
Excitation:	18 to 28 Volts DC
Static Error Band:	±2% of Full Scale
Temperature:	-20°C to 75°C
Thermal Sensitivity Shift:	<0.01% of Capacity per °C
Materials:	AL 7075-T651, 17/4 pH Stainless Steel and AISI 4140 Alloy Steel
Hazardous Area:	UL and CAN/CSA or ATEX
Load Simulation:	Available upon request.

* Other capacities available.